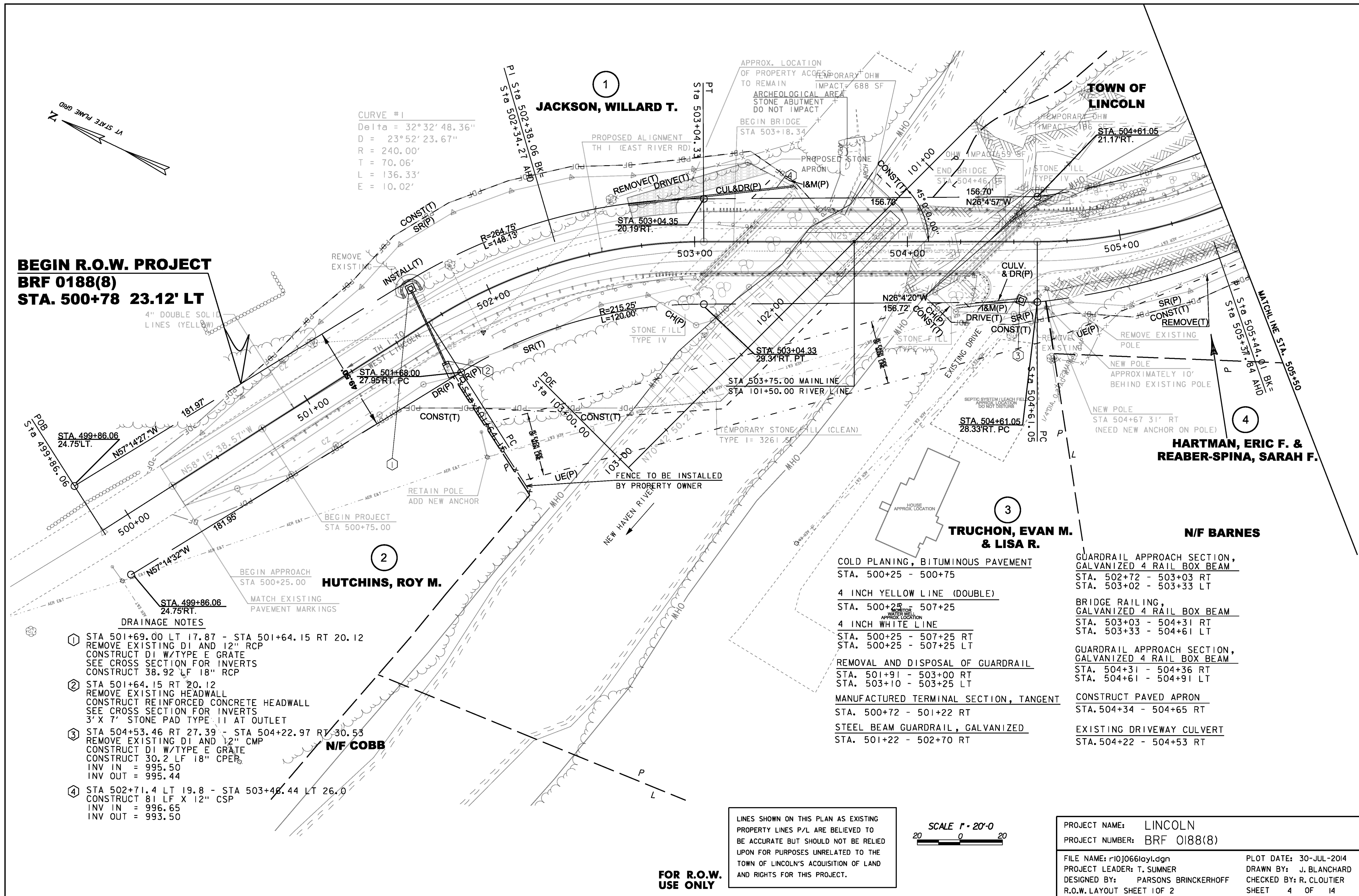


Original Drawing - Ink on polymer meeting the requirements of 27 V.S.A. § 1403



CURVE #1  
 Delta = 32°32'48.36"  
 D = 23°52'23.67"  
 R = 240.00'  
 T = 70.06'  
 L = 136.33'  
 E = 10.02'

**BEGIN R.O.W. PROJECT  
 BR# 0188(8)  
 STA. 500+78 23.12' LT**

4" DOUBLE SOLID LINES (YELLOW)

**DRAINAGE NOTES**

- ① STA 501+69.00 LT 17.87 - STA 501+64.15 RT 20.12  
 REMOVE EXISTING DI AND 12" RCP  
 CONSTRUCT DI W/TYPE E GRATE  
 SEE CROSS SECTION FOR INVERTS  
 CONSTRUCT 38.92 LF 18" RCP
- ② STA 501+64.15 RT 20.12  
 REMOVE EXISTING HEADWALL  
 CONSTRUCT REINFORCED CONCRETE HEADWALL  
 SEE CROSS SECTION FOR INVERTS  
 3' X 7' STONE PAD TYPE II AT OUTLET
- ③ STA 504+53.46 RT 27.39 - STA 504+22.97 RT 30.53  
 REMOVE EXISTING DI AND 12" CMP  
 CONSTRUCT DI W/TYPE E GRATE  
 CONSTRUCT 30.2 LF 18" CPER  
 INV IN = 995.50  
 INV OUT = 995.44
- ④ STA 502+71.4 LT 19.8 - STA 503+46.44 LT 26.0  
 CONSTRUCT 81 LF X 12" CSP  
 INV IN = 996.65  
 INV OUT = 993.50

- COLD PLANING, BITUMINOUS PAVEMENT  
 STA. 500+25 - 500+75
- 4 INCH YELLOW LINE (DOUBLE)  
 STA. 500+25 - 507+25
- 4 INCH WHITE LINE  
 STA. 500+25 - 507+25 RT  
 STA. 500+25 - 507+25 LT
- REMOVAL AND DISPOSAL OF GUARDRAIL  
 STA. 501+91 - 503+00 RT  
 STA. 503+10 - 503+25 LT
- MANUFACTURED TERMINAL SECTION, TANGENT  
 STA. 500+72 - 501+22 RT
- STEEL BEAM GUARDRAIL, GALVANIZED  
 STA. 501+22 - 502+70 RT
- GUARDRAIL APPROACH SECTION, GALVANIZED 4 RAIL BOX BEAM  
 STA. 502+72 - 503+03 RT  
 STA. 503+02 - 503+33 LT
- BRIDGE RAILING, GALVANIZED 4 RAIL BOX BEAM  
 STA. 503+03 - 504+31 RT  
 STA. 503+33 - 504+61 LT
- GUARDRAIL APPROACH SECTION, GALVANIZED 4 RAIL BOX BEAM  
 STA. 504+31 - 504+36 RT  
 STA. 504+61 - 504+91 LT
- CONSTRUCT PAVED APRON  
 STA. 504+34 - 504+65 RT
- EXISTING DRIVEWAY CULVERT  
 STA. 504+22 - 504+53 RT

LINES SHOWN ON THIS PLAN AS EXISTING PROPERTY LINES P/L ARE BELIEVED TO BE ACCURATE BUT SHOULD NOT BE RELIED UPON FOR PURPOSES UNRELATED TO THE TOWN OF LINCOLN'S ACQUISITION OF LAND AND RIGHTS FOR THIS PROJECT.

SCALE 1" = 20'-0"

PROJECT NAME: LINCOLN  
 PROJECT NUMBER: BR# 0188(8)  
 FILE NAME: r10j066lay1.dgn  
 PROJECT LEADER: T. SUMNER  
 DESIGNED BY: PARSONS BRINCKERHOFF  
 R.O.W. LAYOUT SHEET 1 OF 2  
 PLOT DATE: 30-JUL-2014  
 DRAWN BY: J. BLANCHARD  
 CHECKED BY: R. CLOUTIER  
 SHEET 4 OF 14

**FOR R.O.W. USE ONLY**