

**DETOUR (T.H. 12)  
CURVE NO. 1 DATA**

Δ = 19°05'20.51"  
D = 43°04'46.32"  
R = 133.00'  
T = 22.36'  
L = 44.31'  
E = 1.87'  
BANK = NONE

**DETOUR (T.H. 12)  
CURVE NO. 2 DATA**

Δ = 60°21'44.73"  
D = 127°19'26.24"  
R = 45.00'  
T = 26.17'  
L = 47.41'  
E = 7.06'  
BANK = NONE

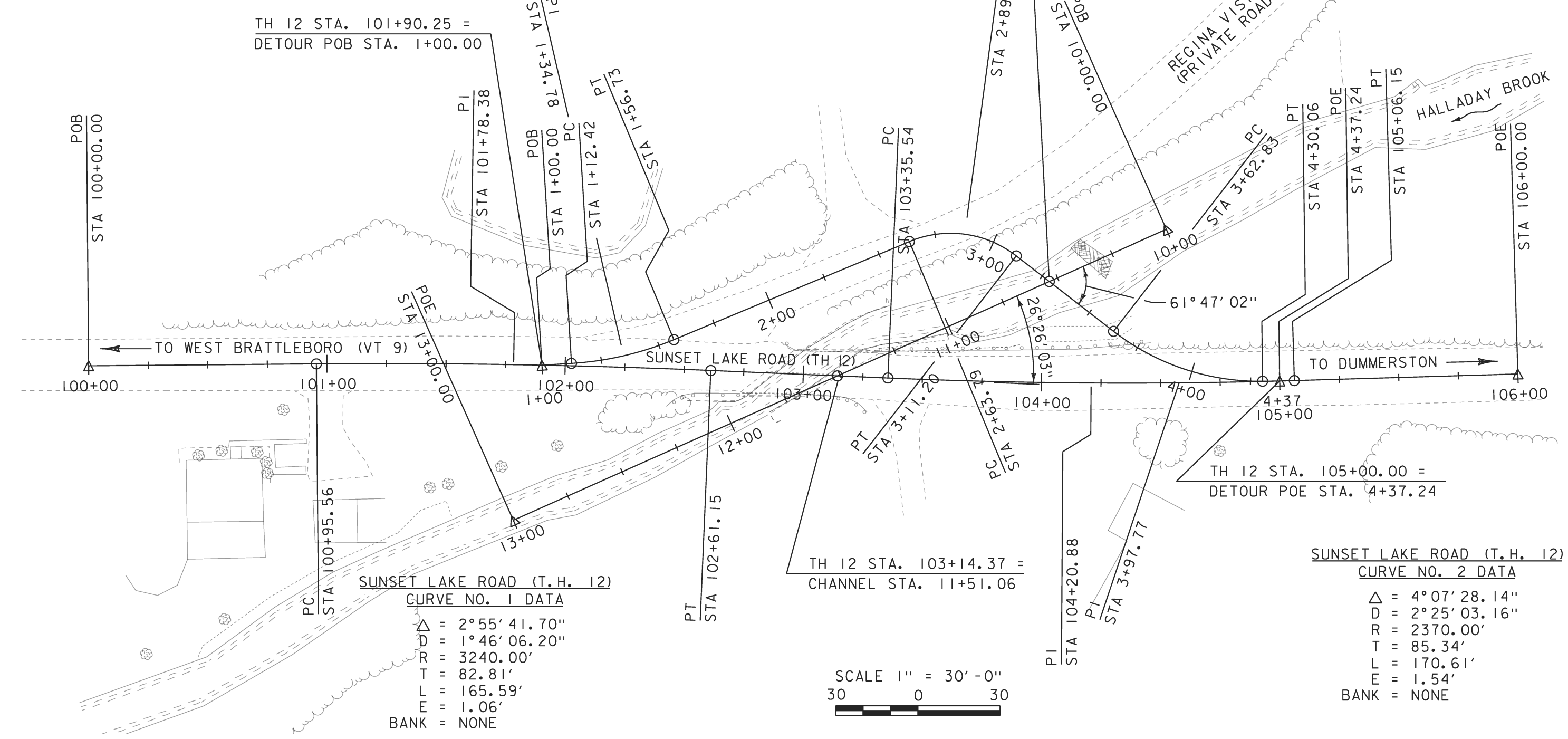
**DETOUR (T.H. 12)  
CURVE NO. 3 DATA**

Δ = 38°31'27.38"  
D = 57°17'44.81"  
R = 100.00'  
T = 34.95'  
L = 67.24'  
E = 5.93'  
BANK = NONE

**MAINLINE ALIGNMENT**

Horizontal Alignment Name: TH 12 Proposed

	STATION	NORTHING	EASTING
Element: Linear			
POB (24)	100+00.00	134840.8468	1607485.0762
PC (25)	100+95.56	134934.4914	1607466.0249
Tangent Direction:	N 11°29'58.03" W		
Tangent Length:	95.56		
Element: Circular			
PC (25)	100+95.56	134934.4914	1607466.0249
PI	101+78.38	135015.6414	1607449.5155
CC (26)		135580.4132	1610640.9871
PT (27)	102+61.15	135097.5289	1607437.1733
Radius:	3240.00		
Delta:	2°55'41.70" Right		
Degree of Curvature(Arc):	1°46'06.20"		
Length:	165.59		
Tangent:	82.81		
Chord:	165.57		
Middle Ordinate:	1.06		
External:	1.06		
Tangent Direction:	N 11°29'58.03" W		
Radial Direction:	N 78°30'01.97" E		
Chord Direction:	N 10°02'07.18" W		
Radial Direction:	N 81°25'43.67" E		
Tangent Direction:	N 8°34'16.33" W		



**SUNSET LAKE ROAD (T.H. 12)  
CURVE NO. 1 DATA**

Δ = 2°55'41.70"  
D = 1°46'06.20"  
R = 3240.00'  
T = 82.81'  
L = 165.59'  
E = 1.06'  
BANK = NONE

**SUNSET LAKE ROAD (T.H. 12)  
CURVE NO. 2 DATA**

Δ = 4°07'28.14"  
D = 2°25'03.16"  
R = 2370.00'  
T = 85.34'  
L = 170.61'  
E = 1.54'  
BANK = NONE

**DETOUR ALIGNMENT**

Horizontal Alignment Name: Detour

	STATION	NORTHING	EASTING
Element: Linear			
POB(13)	1+00.00	135027.5412	1607448.5065
PC (14)	1+12.42	135039.5643	1607445.3982
Tangent Direction:	N 14°29'41.61" W		
Tangent Length:	12.42		
Element: Circular			
PC (14)	1+12.42	135039.5643	1607445.3982
PI	1+34.78	135061.2153	1607439.8010
CC (15)		135006.2752	1607316.6316
PT (39)	1+56.73	135079.8452	1607427.4308
Radius:	133.00		
Delta:	19°05'20.51" Left		
Degree of Curvature(Arc):	43°04'46.32"		
Length:	44.31		
Tangent:	22.36		
Chord:	44.11		
Middle Ordinate:	1.84		
External:	1.87		
Tangent Direction:	N 14°29'41.61" W		
Radial Direction:	N 75°30'18.39" E		
Chord Direction:	N 24°02'21.87" W		
Radial Direction:	N 56°24'57.88" E		
Tangent Direction:	N 33°35'02.12" W		

Horizontal Alignment Name: Detour Proposed (Continued)

	STATION	NORTHING	EASTING
Element: Linear			
PT (39)	1+56.73	135079.8452	1607427.4308
PC (36)	2+63.79	135169.0338	1607368.2101
Tangent Direction:	N 33°35'02.12" W		
Tangent Length:	107.06		
Element: Circular			
PC (36)	2+63.79	135169.0338	1607368.2101
PI	2+89.96	135190.8362	1607353.7335
CC (37)		135193.9259	1607405.6985
PT (38)	3+11.20	135214.2004	1607365.5246
Radius:	45.00		
Delta:	60°21'44.73" Right		
Degree of Curvature(Arc):	127°19'26.24"		
Length:	47.41		
Tangent:	26.17		
Chord:	45.25		
Middle Ordinate:	6.10		
External:	7.06		
Tangent Direction:	N 33°35'02.12" W		
Radial Direction:	N 56°24'57.88" E		
Chord Direction:	N 3°24'09.76" W		
Radial Direction:	S 63°13'17.40" E		
Tangent Direction:	N 26°46'42.60" E		
Element: Linear			
PT (38)	3+11.20	135214.2004	1607365.5246
PC (21)	3+62.83	135260.2927	1607388.7858
Tangent Direction:	N 26°46'42.60" E		
Tangent Length:	51.63		

Horizontal Alignment Name: Detour Proposed (Continued)

	STATION	NORTHING	EASTING
Element: Circular			
PC (21)	3+62.83	135260.2927	1607388.7858
PI	3+97.77	135291.4903	1607404.5301
CC (22)		135305.3469	1607299.5103
PT (23)	4+30.06	135325.7039	1607397.4163
Radius:	100.00		
Delta:	38°31'27.38" Left		
Degree of Curvature(Arc):	57°17'44.81"		
Length:	67.24		
Tangent:	34.95		
Chord:	65.98		
Middle Ordinate:	5.60		
External:	5.93		
Tangent Direction:	N 26°46'42.60" E		
Radial Direction:	S 63°13'17.40" E		
Chord Direction:	N 7°30'58.91" E		
Radial Direction:	N 78°15'15.22" E		
Tangent Direction:	N 11°44'44.78" W		
Element: Linear			
PT (23)	4+30.06	135325.7039	1607397.4163
POE(35)	4+37.24	135332.7293	1607395.9556
Tangent Direction:	N 11°44'44.78" W		
Tangent Length:	7.18		

Element: Linear

PT (31)	105+06.15	135338.7317	1607394.6115
POE (29)	106+00.00	135430.2829	1607373.9868
Tangent Direction:	N 12°41'44.48" W		
Tangent Length:	93.85		

PROJECT NAME:	BRATTLEBORO		
PROJECT NUMBER:	BRO 1442(35)		
FILE NAME:	r10j062.dwg	PLOT DATE:	26-FEB-2013
PROJECT LEADER:	M. CHANETTE	DRAWN BY:	VHB
DESIGNED BY:	VHB	CHECKED BY:	VHB
ALIGNMENT SHEET		SHEET	8 OF 15