

CONSTRUCT 11.5' PAVED APRON  
STA. 102+69, LT - 41.5' WIDE

CONSTRUCT 12' PAVED DRIVE  
STA. 103+59, RT - 12' WIDE

REMOVAL AND DISPOSAL OF GUARDRAIL  
STA. 102+43 - 102+73, RT  
STA. 102+92 - 102+96, LT  
STA. 103+03 - 103+27, RT  
STA. 103+31 - 104+46, LT

COLD PLANING, BITUMINOUS PAVEMENT  
STA. 101+35 - 101+55, LT & RT  
STA. 105+25 - 105+45, LT & RT

BRIDGE RAILING, GALVANIZED  
HDSB/FASCIA MOUNTED/STEEL TUBING  
STA. 102+43 - 103+25, RT  
STA. 102+88 - 104+08, LT

GUARDRAIL APPROACH SECTION, GALVANIZED  
HD STEEL BEAM W/8 FEET POSTS

STA. 102+18 - 102+43, RT  
STA. 102+92, 24.58' LT - 102+88, LT  
STA. 104+08 - 104+33, LT

RELOCATE MAILBOX, MULTIPLE SUPPORT  
STA. 102+39, RT

RELOCATE MAILBOX, SINGLE SUPPORT  
STA. 103+83, RT

STEEL BEAM GUARDRAIL,  
GALVANIZED W/8 FEET POSTS

STA. 102+12 - 102+18, RT  
STA. 102+92, 24.58' LT - 103+20, 38.4' LT  
STA. 104+33 - 104+63, LT

ANCHOR FOR STEEL BEAM RAIL  
STA. 102+06, RT  
STA. 103+25, 40.75' LT  
STA. 103+30, RT  
STA. 104+69, LT

STEEL BEAM GUARDRAIL, GALV.  
STA. 102+00 - 102+12, RT  
STA. 103+20, 38.4' LT - 103+34, 44.5' LT  
STA. 103+25 - 103+36, RT  
STA. 104+63 - 104+76, LT

N 134835.91 FT  
E 1607460.82 FT  
STA 100+00.00  
24.75' LT.

BEGIN PROJECT  
STA. 101+80.00

BEGIN APPROACH  
STA. 101+35.00  
MATCH EXISTING

BEGIN BRIDGE  
STA. 102+79.42  
F.G. = 541.09

**END R.O.W. PROJECT  
BRO 1442 (35)  
STA. 104+89.02  
25.83' RT.**

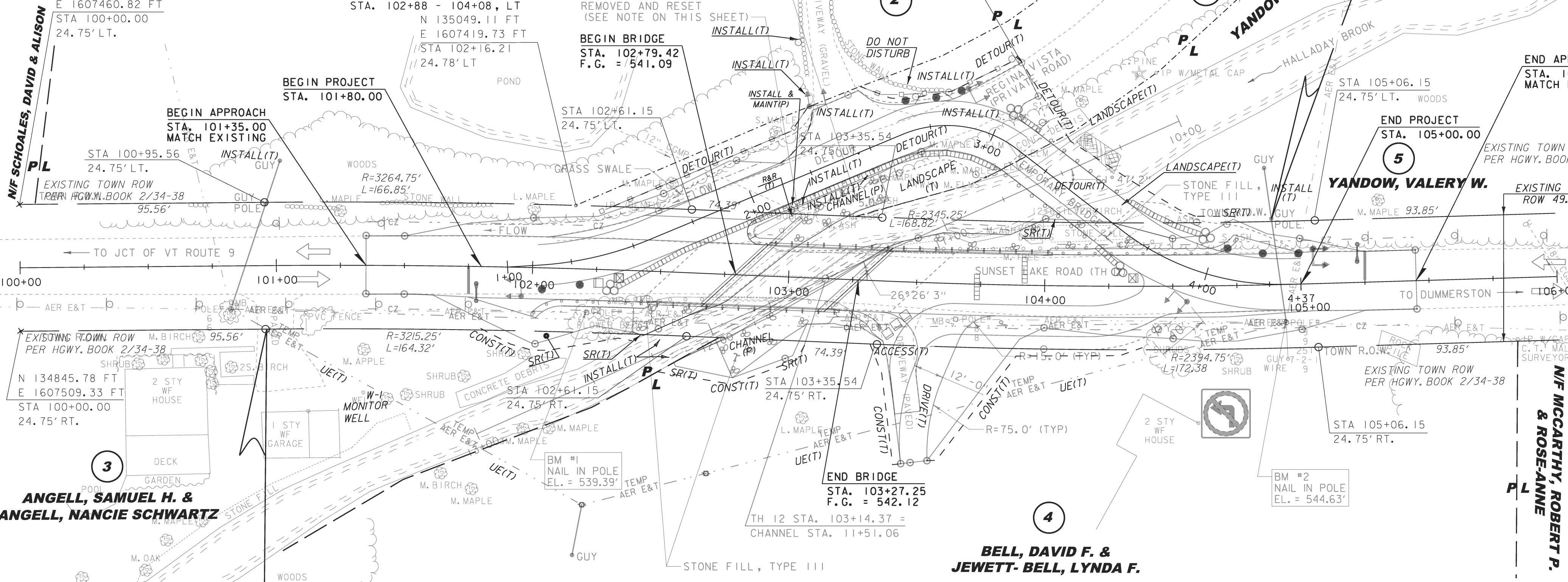
END APPROACH  
STA. 105+45.00  
MATCH EXISTING

END PROJECT  
STA. 105+00.00

**YANDOW, VALERY W.**

EXISTING TOWN ROW  
PER HGWY. BOOK 2/34-38

EXISTING TOWN ROW  
ROW 49.5'



EXISTING TOWN ROW  
PER HGWY. BOOK 2/34-38  
N 134845.78 FT  
E 1607509.33 FT  
STA 100+00.00  
24.75' RT.

**ANGELL, SAMUEL H. &  
ANGELL, NANCIE SCHWARTZ**

**BEGIN R.O.W. PROJECT  
BRO 1442 (35)  
STA. 100+96.02  
24.75' RT.**

EDGE OF PAVEMENT WIDTH TRANSITION  
STA. 101+55 = MATCH EXISTING LT & RT  
STA. 101+80 = 12'-2" LT & RT  
STA. 104+72 = 12'-2" RT  
STA. 104+97 = 12'-2" LT  
STA. 105+05 = MATCH EXISTING LT & RT

END BRIDGE  
STA. 103+27.25  
F.G. = 542.12

**BELL, DAVID F. &  
JEWETT-BELL, LYNDIA F.**

NOTE:  
1. EXISTING BOULDER ALONG REGINA VISTA (T.H. 12  
STA. 103+02, 23.83' LT) SHALL BE REMOVED AND  
RESET. BOULDER SHALL BE LOCATED BEHIND THE  
GUARDRAIL SO AS TO PROVIDE A MINIMUM OF 4'-0"  
CLEAR ZONE BETWEEN THE BOULDER AND THE FRONT  
OF GUARDRAIL. ALL COST FOR PROPERLY REMOVING,  
STORING AND RESETTING THE BOULDER WILL BE  
INCIDENTAL TO ALL CONTRACT ITEMS.

SCALE 1" = 20'-0"  
20 0 20

**FOR R.O.W.  
USE ONLY**

LINES SHOWN ON THIS PLAN AS EXISTING  
PROPERTY LINES P/L ARE BELIEVED TO  
BE ACCURATE BUT SHOULD NOT BE RELIED  
UPON FOR PURPOSES UNRELATED TO THE  
STATE OF VERMONT'S ACQUISITION OF LAND  
AND RIGHTS FOR THIS PROJECT.

PROJECT NAME:	BRATTLEBORO
PROJECT NUMBER:	BRO 1442(35)
FILE NAME:	r10j062_layout.dgn
PROJECT LEADER:	M. CHANETTE
DESIGNED BY:	S.E. BURBANK
ROW LAYOUT SHEET 1 OF 1	
PLOT DATE:	19-JUL-2013
DRAWN BY:	B. FERLAZO
CHECKED BY:	H. PETROVS
SHEET	4 OF 15