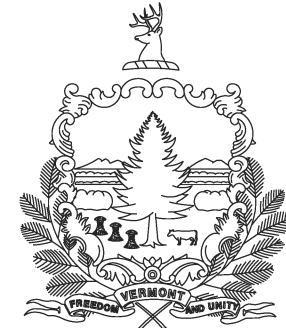


R.O.W. PLANS

INDEX OF SHEETS

- 1 TITLE SHEET
- 2 LEGEND SHEET
- 3 DETAIL SHEET
- 4 LAYOUT SHEET
- 5 PRELIMINARY INFORMATION SHEET
- 6 TYPICAL SECTION SHEET
- 7 TIE SHEET
- 8 ALIGNMENT SHEET
- 9 PROFILE SHEET
- 10 EPSC CONSTRUCTION SHEET
- 11 PLANTING PLAN
- 12 PLANTING AREA 1 PLAN & SCHEDULE
- 13 PLANTING AREA 2 PLAN & SCHEDULE
- 14 PLAN & ELEVATION SHEET
- 15 TRAFFIC CONTROL SHEET

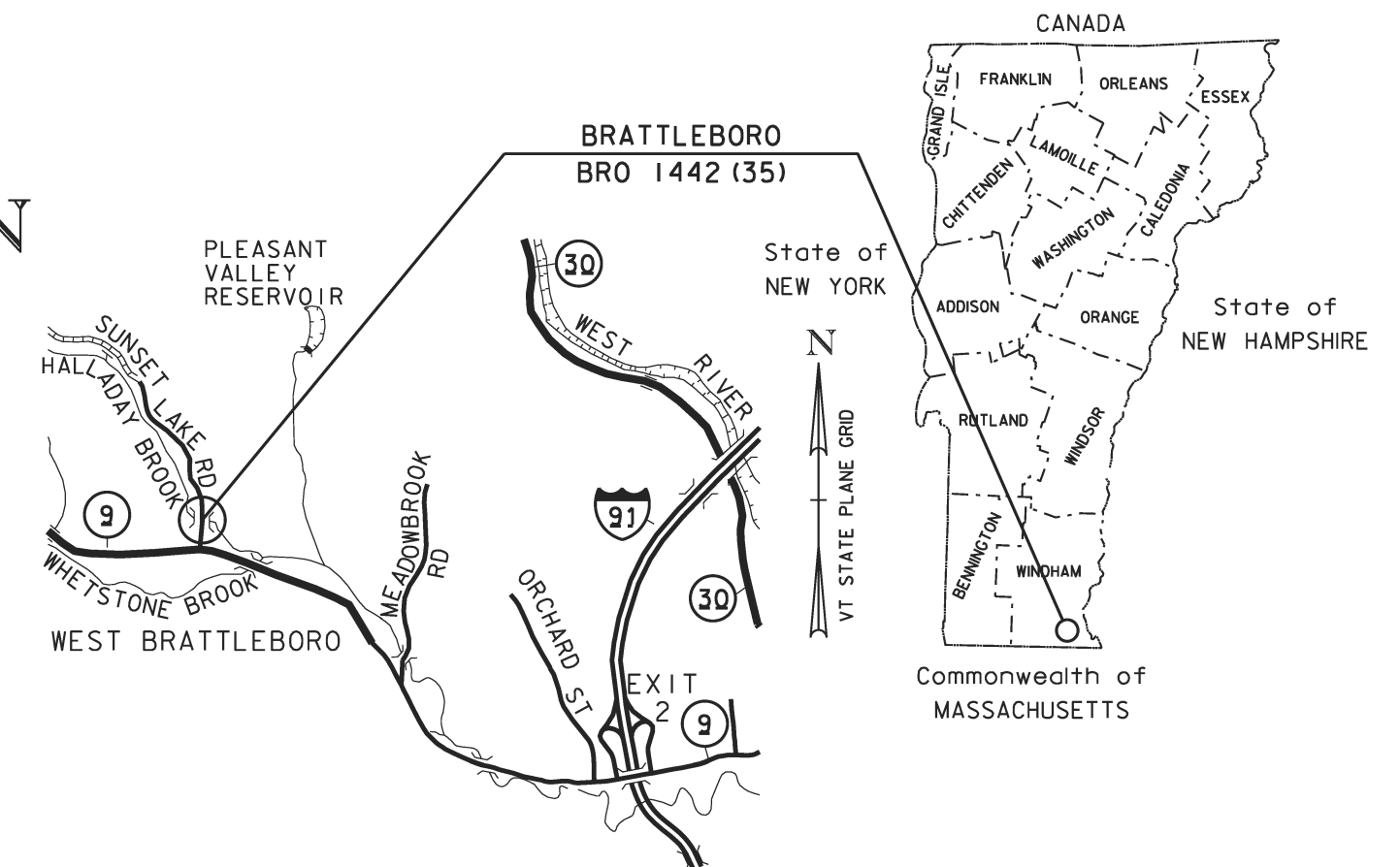
STATE OF VERMONT AGENCY OF TRANSPORTATION



PROPOSED IMPROVEMENT BRIDGE PROJECT

TOWN OF BRATTLEBORO COUNTY OF WINDHAM

TH 12, CLASS III (LOCAL ROAD), BRIDGE NO. 7



LOCATION MAP
NOT TO SCALE

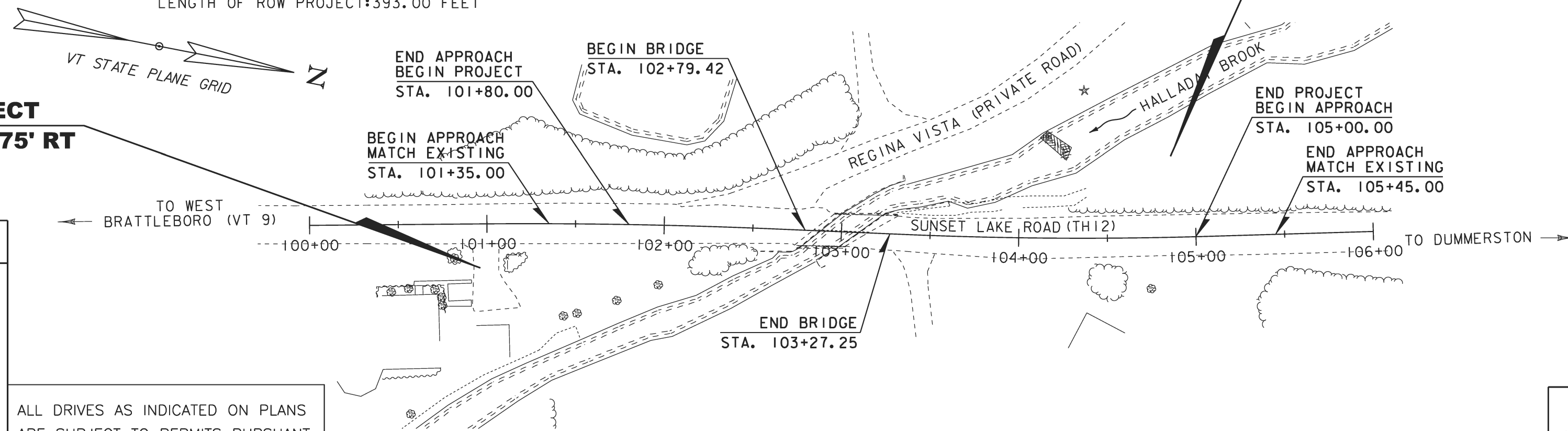
PROJECT LOCATION: LOCATED IN THE COUNTY OF WINDHAM, TOWN OF BRATTLEBORO, ON SUNSET LAKE ROAD (TH 12); BRIDGE NO. 7 OVER HALLADAY BROOK, APPROXIMATELY 0.20 MILES NORTH OF THE INTERSECTION OF VT 9 AND SUNSET LAKE RD (TH 12)

PROJECT DESCRIPTION: WORK TO BE PERFORMED UNDER THIS PROJECT INCLUDES REMOVAL AND REPLACEMENT OF BRIDGE NO. 7, ON THE EXISTING ALIGNMENT, WITH ASSOCIATED ROADWAY AND CHANNEL WORK.

LENGTH OF ROADWAY: 272.17 FEET
 LENGTH OF BRIDGE: 47.83 FEET
 LENGTH OF PROJECT: 320.00 FEET
 LENGTH OF ROW PROJECT: 393.00 FEET

**END R.O.W. PROJECT
STA. 104+89.02 25.83' RT**

**BEGIN R.O.W. PROJECT
STA. 100+96.02 24.75' RT**



CONVENTIONAL SYMBOLS

COUNTY LINE	
TOWN LINE	
LIMITS OF ACCESS	
POINT OF ACCESS	
FENCE LINE	
STONE WALL	
TRAVELED WAY	
GUARD RAIL	
RAILROAD	
SURVEY LINE	
CULVERT	
POWER POLE	
TELEPHONE POLE	
TREES	
CONTROL OF ACCESS	
PROPERTY LINE	
R.O.W. TAKING LINE	
SLOPE RIGHTS	
TOP OF CUT	
TOE OF SLOPE	

ALL DRIVES AS INDICATED ON PLANS ARE SUBJECT TO PERMITS PURSUANT TO TITLE 19 V.S.A. § 1111.

SURVEYED BY : VHB
 SURVEYED DATE : NOV 2010

DATUM
 VERTICAL NAVD 88
 HORIZONTAL NAD 83 (07)

SCALE 1" = 40' - 0"

THESE PLANS ARE SUBJECT TO SUCH ENGINEERING CHANGES AS MAY BE REQUIRED BY THE FEDERAL HIGHWAY ADMINISTRATION OR THE DIRECTOR OF PROGRAM DEVELOPMENT.
 CONSTRUCTION IS TO BE CARRIED ON IN ACCORDANCE WITH THESE PLANS AND THE STANDARD SPECIFICATIONS FOR CONSTRUCTION DATED 2011, AS APPROVED BY THE FEDERAL HIGHWAY ADMINISTRATION ON JULY 20, 2011 FOR USE ON THIS PROJECT, INCLUDING ALL SUBSEQUENT REVISIONS AND SUCH REVISED SPECIFICATIONS AND SPECIAL PROVISIONS AS ARE INCORPORATED IN THESE PLANS.

APPROVED RICHARD TETREULT DATE 02-26-13
Director of Program Development

APPROVED ROBERT M. WHITE DATE 02-26-13
Chief of Right of Way

**BRATTLEBORO
BRO 1442(35)**

ROW SHEET 1 OF 15 SHEETS