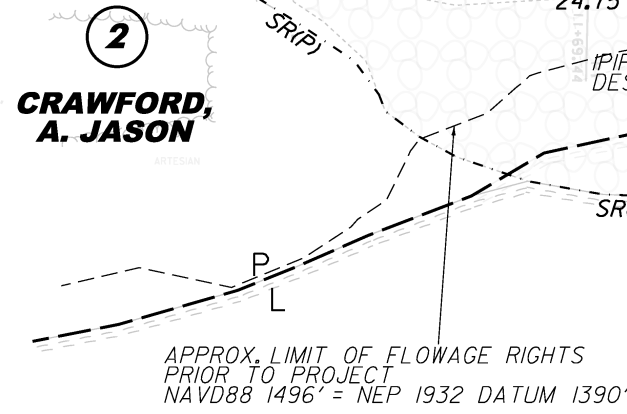
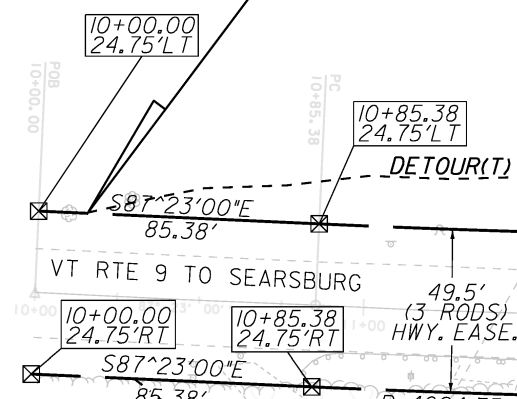


**BEGIN R.O.W. PROJECT
STA 10+15, 24.75' LT.**

1
**CHIMNEY HILL OWNERS
ASSOCIATION, INC.**



3
**TRANSCANADA HYDRO
NORTHEAST, INC.**

APPROX. LIMIT OF FLOWAGE RIGHTS
PRIOR TO PROJECT
NAVD88 1496' = NEP 1932 DATUM 1390'

**TOWN OF
WILMINGTON**

HAYSTACK RD

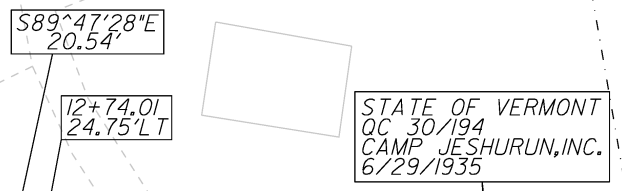
**N/F
CHASE HOME
FINANCE LLC**

5
**MARTIN,
KARINA J.**

MOOSEHEAD CEDAR LOG HOMES

7
**DRUKE-FAWCETT
LLC**

WW BUILDING SUPPLY



STATE OF VERMONT
OC 30/194
CAMP JESHURUN, INC.
6/29/1935

TOE OF SLOPE/EDGE OF RIVER
PRIOR TO PROJECT
OCTOBER 13, 2009

4B
**PALMITER,
BRADLEY & COLLEEN;
PALMITER, BRIAN;
PALMITER, HANNAH;
PALMITER, ADAM**

TOE OF SLOPE/EDGE OF RIVER
AFTER PROJECT
AUGUST 17, 2010

**COLD BROOK FIRE
DISTRICT #1**

4C
**PALMITER,
BRADLEY & COLLEEN;
PALMITER, BRIAN;
PALMITER, HANNAH;
PALMITER, ADAM**

TOE OF SLOPE/EDGE OF RIVER
PRIOR TO PROJECT
OCTOBER 13, 2009

TOE OF SLOPE/EDGE OF RIVER
AFTER PROJECT
AUGUST 17, 2010

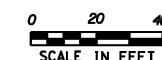
APPROX. LIMIT OF FLOWAGE RIGHTS
PRIOR TO PROJECT
NAVD88 1496' = NEP 1932 DATUM 1390'

**N/F
O'BRIEN, CAROL J.**

**N/F
B&C REAL ESTATE
HOLDINGS LLC**

**END R.O.W. PROJECT
STA 20+80, 53' RT.**

☒ CALCULATED R.O.W. POINT



LINES SHOWN ON THIS PLAN AS EXISTING
PROPERTY LINES P/L ARE BELIEVED TO
BE ACCURATE BUT SHOULD NOT BE RELIED
UPON FOR PURPOSES UNRELATED TO THE
STATE OF VERMONT'S ACQUISITION OF LAND
AND RIGHTS FOR THIS PROJECT.

PROJECT NAME: WILMINGTON
PROJECT NUMBER: NH 010-1(40)
FILE NAME: r09b292layout.dgn
PROJECT LEADER: K. ROBBIE
DESIGNED BY: P. PELOQUIN
PLOT DATE: 07-DEC-2011
DRAWN BY: P. PELOQUIN
CHECKED BY: E. PIERCE
SHEET 4 OF 4