

Original Drawing – Ink on polymer meeting the requirements of 27 V.S.A. § 1403

# R.O.W. PLANS

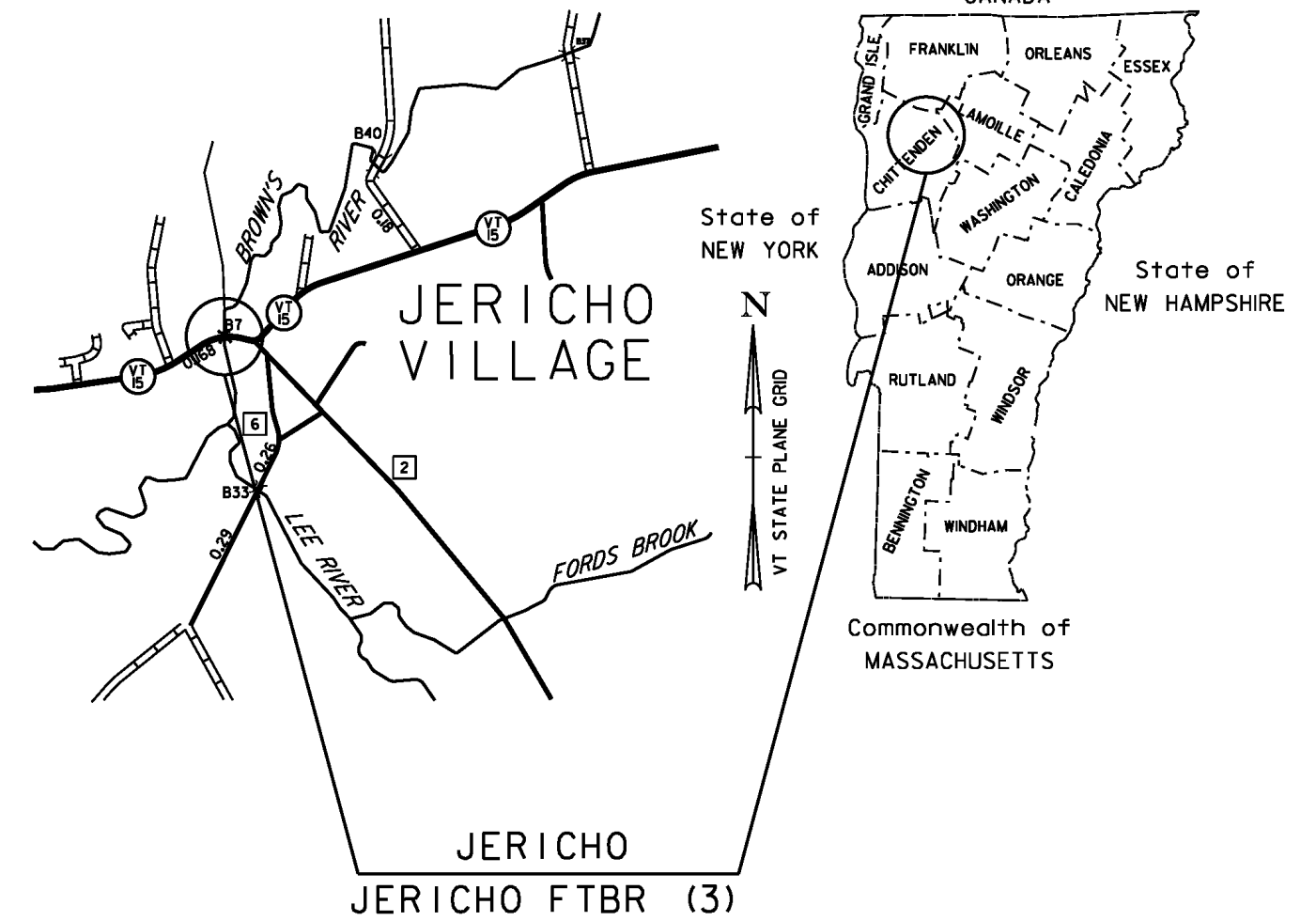
## INDEX OF SHEETS

- |     |  |
|-----|--|
| 1   | TITLE                                  |
| 2   | LEGEND                                 |
| 3   | DETAIL SHEET                           |
| 4   | LAYOUT SHEET                           |
| 5   | PRELIMINARY INFORMATION SHEET          |
| 6-9 | TYPICAL SECTIONS                       |
| 10  | TIE SHEET                              |
| 11  | PEDESTRIAN BRIDGE/ SIDEWALK PROFILE    |
| 12  | ALIGNMENT & CURB TIE PLAN              |
| 13  | EROSION CONTROL CONSTRUCTION SITE PLAN |
| 14  | PLAN & ELEVATION                       |
| 15  | STONE MASONRY WALL PLAN & DETAILS      |
| 16  | SIGNING & PAVEMENT MARKING PLAN        |
| 17  | TRAFFIC CONTROL LAYOUT SHEET           |
| 18  | GUARDRAIL APPROACH SECTION DETAILS     |

# STATE OF VERMONT AGENCY OF TRANSPORTATION



## PROPOSED IMPROVEMENT BRIDGE PROJECT TOWN OF JERICO COUNTY OF CHITTENDEN



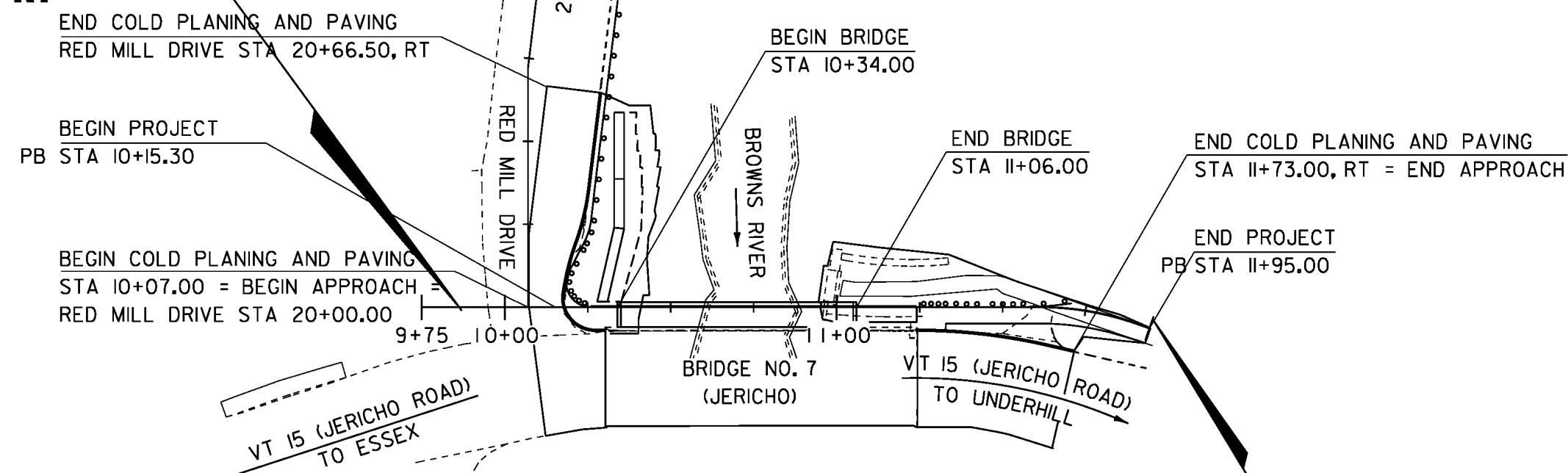
ROUTE NO : VT 15 (MINOR ARTERIAL) BRIDGE NO : PEDESTRIAN BRIDGE

PROJECT LOCATION: LOCATED IN THE COUNTY OF CHITTENDEN, TOWN OF JERICO, ADJACENT TO BRIDGE NO. 7 ON VT 15 OVER BROWNS RIVER, APPROXIMATELY 0.45 MILE EAST OF THE ESSEX-JERICO TOWN LINE.

PROJECT DESCRIPTION: CONSTRUCTION OF A NEW PEDESTRIAN BRIDGE, APPROACH WALKWAYS AND ADJACENT RETAINING WALL, COLD PLANING AND PAVING OF VT 15 AND RED MILL DRIVE.

LENGTH OF STRUCTURE : 72.00 FEET  
 LENGTH OF ROADWAY : 107.70 FEET  
 LENGTH OF PROJECT : 179.70 FEET  
 LENGTH OF ROW PROJECT: 208.00 FEET

**BEGIN R.O.W. PROJECT  
STP FTBR (3)  
PB 9+87 1' RT**



**END R.O.W. PROJECT  
STP FTBR (3)  
PB 11+95 3' LT**

PLAN

SCALE 1" = 30' - 0"  
30 0 30

### CONVENTIONAL SYMBOLS

COUNTY LINE	
TOWN LINE	
LIMITS OF ACCESS	
POINT OF ACCESS	
FENCE LINE	
STONE WALL	
TRAVELED WAY	
GUARD RAIL	
RAILROAD	
SURVEY LINE	
CULVERT	
POWER POLE	
TELEPHONE POLE	
TREES	
CONTROL OF ACCESS	
PROPERTY LINE	
R.O.W. TAKING LINE	
SLOPE RIGHTS	
TOP OF CUT	
TOE OF SLOPE	

ALL DRIVES AS INDICATED ON PLANS ARE SUBJECT TO PERMITS PURSUANT TO TITLE 19 V.S.A. § 1111.

SURVEYED BY :  
SURVEYED DATE :

DATUM  
VERTICAL  
HORIZONTAL

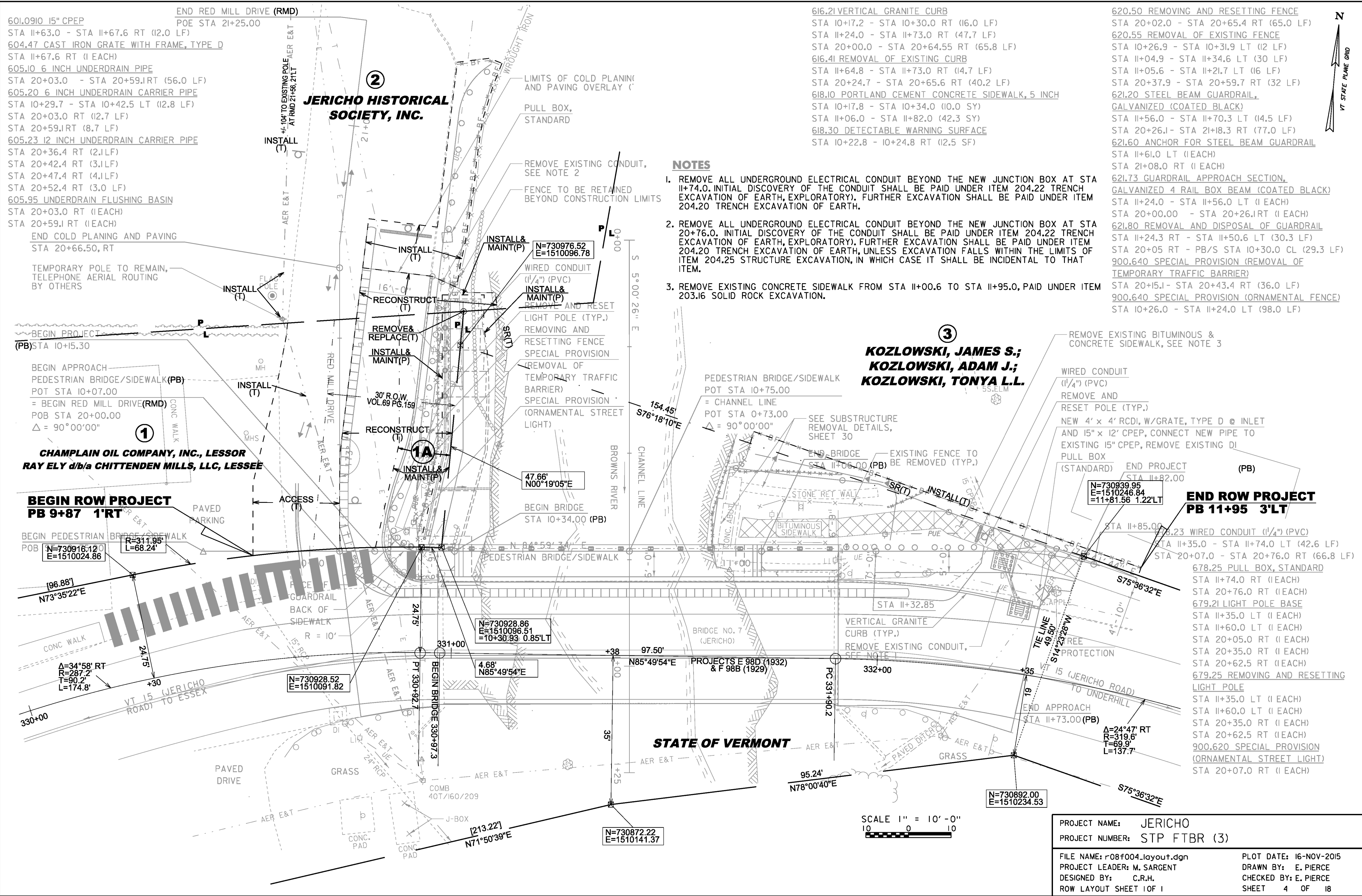
THESE PLANS ARE SUBJECT TO SUCH ENGINEERING CHANGES AS MAY BE REQUIRED BY THE FEDERAL HIGHWAY ADMINISTRATION OR THE DIRECTOR OF PROGRAM DEVELOPMENT.  
 CONSTRUCTION IS TO BE CARRIED ON IN ACCORDANCE WITH THESE PLANS AND THE STANDARD SPECIFICATIONS FOR CONSTRUCTION DATED 2011, AS APPROVED BY THE FEDERAL HIGHWAY ADMINISTRATION ON JULY 20, 2011 FOR USE ON THIS PROJECT, INCLUDING ALL SUBSEQUENT REVISIONS AND SUCH REVISED SPECIFICATIONS AND SPECIAL PROVISIONS AS ARE INCORPORATED IN THESE PLANS.

APPROVED ROBERT M. WHITE DATE 05-23-13  
*Chief of Right of Way*

**JERICO  
STP FTBR (3)**  
 ROW SHEET 1 OF 18 SHEETS



Original Drawing - Ink on polymer meeting the requirements of 27 V.S.A. § 1403



- 601.0910 15" CPEP  
STA 11+63.0 - STA 11+67.6 RT (4.6 LF)
- 604.47 CAST IRON GRATE WITH FRAME, TYPE D  
STA 11+67.6 RT (1 EACH)
- 605.10 6 INCH UNDERDRAIN PIPE  
STA 20+03.0 - STA 20+59.1 RT (56.0 LF)
- 605.20 6 INCH UNDERDRAIN CARRIER PIPE  
STA 10+29.7 - STA 10+42.5 LT (12.8 LF)
- STA 20+03.0 RT (12.7 LF)
- STA 20+59.1 RT (8.7 LF)
- 605.23 12 INCH UNDERDRAIN CARRIER PIPE  
STA 20+36.4 RT (2.1 LF)
- STA 20+42.4 RT (3.1 LF)
- STA 20+47.4 RT (4.1 LF)
- STA 20+52.4 RT (3.0 LF)
- 605.95 UNDERDRAIN FLUSHING BASIN  
STA 20+03.0 RT (1 EACH)
- STA 20+59.1 RT (1 EACH)
- END COLD PLANING AND PAVING  
STA 20+66.50, RT

- 616.21 VERTICAL GRANITE CURB  
STA 10+17.2 - STA 10+30.0 RT (16.0 LF)
- STA 11+24.0 - STA 11+73.0 RT (47.7 LF)
- STA 20+00.0 - STA 20+64.55 RT (65.8 LF)
- 616.41 REMOVAL OF EXISTING CURB  
STA 11+64.8 - STA 11+73.0 RT (14.7 LF)
- STA 20+24.7 - STA 20+65.6 RT (40.2 LF)
- 618.10 PORTLAND CEMENT CONCRETE SIDEWALK, 5 INCH  
STA 10+17.8 - STA 10+34.0 (10.0 SY)
- STA 11+06.0 - STA 11+82.0 (42.3 SY)
- 618.30 DETECTABLE WARNING SURFACE  
STA 10+22.8 - 10+24.8 RT (12.5 SF)
- 620.50 REMOVING AND RESETTING FENCE  
STA 20+02.0 - STA 20+65.4 RT (65.0 LF)
- 620.55 REMOVAL OF EXISTING FENCE  
STA 10+26.9 - STA 10+31.9 LT (12 LF)
- STA 11+04.9 - STA 11+34.6 LT (30 LF)
- STA 11+05.6 - STA 11+21.7 LT (16 LF)
- STA 20+37.9 - STA 20+59.7 RT (32 LF)
- 621.20 STEEL BEAM GUARDRAIL, GALVANIZED (COATED BLACK)  
STA 11+56.0 - STA 11+70.3 LT (14.5 LF)
- STA 20+26.1 - STA 21+18.3 RT (77.0 LF)
- 621.60 ANCHOR FOR STEEL BEAM GUARDRAIL  
STA 11+61.0 LT (1 EACH)
- STA 21+08.0 RT (1 EACH)
- 621.73 GUARDRAIL APPROACH SECTION, GALVANIZED 4 RAIL BOX BEAM (COATED BLACK)  
STA 11+24.0 - STA 11+56.0 LT (1 EACH)
- STA 20+00.00 - STA 20+26.1 RT (1 EACH)
- 621.80 REMOVAL AND DISPOSAL OF GUARDRAIL  
STA 11+24.3 RT - STA 11+50.6 LT (30.3 LF)
- STA 20+05 RT - PB/S STA 10+30.0 CL (29.3 LF)
- 900.640 SPECIAL PROVISION (REMOVAL OF TEMPORARY TRAFFIC BARRIER)  
STA 20+15.1 - STA 20+43.4 RT (36.0 LF)
- 900.640 SPECIAL PROVISION (ORNAMENTAL FENCE)  
STA 10+26.0 - STA 11+24.0 LT (98.0 LF)

- NOTES**
1. REMOVE ALL UNDERGROUND ELECTRICAL CONDUIT BEYOND THE NEW JUNCTION BOX AT STA 11+74.0. INITIAL DISCOVERY OF THE CONDUIT SHALL BE PAID UNDER ITEM 204.22 TRENCH EXCAVATION OF EARTH, EXPLORATORY). FURTHER EXCAVATION SHALL BE PAID UNDER ITEM 204.20 TRENCH EXCAVATION OF EARTH.
  2. REMOVE ALL UNDERGROUND ELECTRICAL CONDUIT BEYOND THE NEW JUNCTION BOX AT STA 20+76.0. INITIAL DISCOVERY OF THE CONDUIT SHALL BE PAID UNDER ITEM 204.22 TRENCH EXCAVATION OF EARTH, EXPLORATORY). FURTHER EXCAVATION SHALL BE PAID UNDER ITEM 204.20 TRENCH EXCAVATION OF EARTH, UNLESS EXCAVATION FALLS WITHIN THE LIMITS OF ITEM 204.25 STRUCTURE EXCAVATION, IN WHICH CASE IT SHALL BE INCIDENTAL TO THAT ITEM.
  3. REMOVE EXISTING CONCRETE SIDEWALK FROM STA 11+00.6 TO STA 11+95.0, PAID UNDER ITEM 203.16 SOLID ROCK EXCAVATION.

**3**  
**KOZLOWSKI, JAMES S.;**  
**KOZLOWSKI, ADAM J.;**  
**KOZLOWSKI, TONYA L.L.**

**END ROW PROJECT**  
**PB 11+95 3'LT**

- 678.25 PULL BOX, STANDARD  
STA 11+74.0 RT (1 EACH)
- STA 20+76.0 RT (1 EACH)
- 679.21 LIGHT POLE BASE  
STA 11+35.0 LT (1 EACH)
- STA 11+60.0 LT (1 EACH)
- STA 20+05.0 RT (1 EACH)
- STA 20+35.0 RT (1 EACH)
- STA 20+62.5 RT (1 EACH)
- 679.25 REMOVING AND RESETTING LIGHT POLE  
STA 11+35.0 LT (1 EACH)
- STA 11+60.0 LT (1 EACH)
- STA 20+35.0 RT (1 EACH)
- STA 20+62.5 RT (1 EACH)
- 900.620 SPECIAL PROVISION (ORNAMENTAL STREET LIGHT)  
STA 20+07.0 RT (1 EACH)

PROJECT NAME: JERICO	PLOT DATE: 16-NOV-2015
PROJECT NUMBER: STP FTBR (3)	DRAWN BY: E. PIERCE
FILE NAME: r08f004.layout.dgn	CHECKED BY: E. PIERCE
PROJECT LEADER: M. SARGENT	SHEET 4 OF 18
DESIGNED BY: C.R.H.	
ROW LAYOUT SHEET 1 OF 1	

SCALE 1" = 10' - 0"  
 10 0 10

GPS CONTROL POINTS

HVCTRL #1

ESSEX 15  
 NORTH = 731391.71  
 EAST = 1505689.56  
 ELEV. = 578.48

GENERAL DESCRIPTION, ESSEX CENTER, 1 MI (1.6 KM) EAST OF, .5 MI (0.8 KM) WEST OF JERICO,  
 5 MI (8.0 KM) EAST ESSEX JUNCTION TO REACH FROM JUNCTION OF VERMONT ROUTE 15 AND VERMONT  
 ROUTE 128 IN ESSEX CENTER PROCEED EAST ALONG ROUTE 15 FOR 2.6 MI (4.2 KM) TO THE  
 JUNCTION WITH TOWN HIGHWAY (WEED ROAD) ON THE NORTH. THENCE PROCEED NORTHWEST ALONG TOWN  
 HIGHWAY FOR 0.3 MI (0.5 KM) TO THE STATION ON THE RIGHT (NORTH). THE STATION IS SET IN  
 A LEDGE OUTCROP, 6 M (19.7 FT) NORTH AND .4 M (1.3 FT) LOWER THAN THE CENTERLINE OF TOWN  
 HIGHWAY, 2.5 M (8.2 FT) EAST OF A WHITE BIRCH, 1 M (3.3 FT) WEST OF FIBERGLASS WITNESS  
 POST.

HVCTRL #2

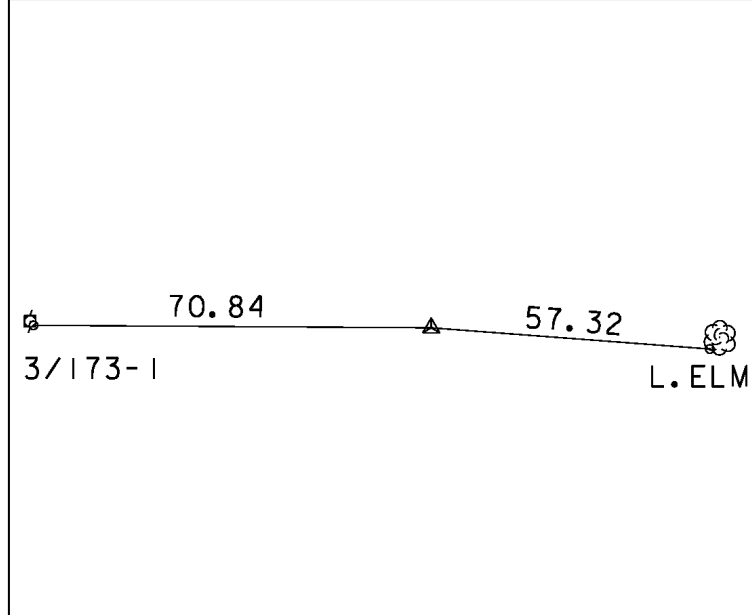
ESSEX 15 AZ  
 NORTH = 730696.73  
 EAST = 1508046.45  
 ELEV. = 551.41

GENERAL DESCRIPTION, ESSEX CENTER, 1 MI (1.6 KM) EAST OF, .5 MI (0.8 KM) WEST OF JERICO,  
 5 MI (8.0 KM) EAST ESSEX JUNCTION TO REACH FROM JUNCTION OF VERMONT ROUTE 15 AND VERMONT  
 ROUTE 128 IN ESSEX CENTER PROCEED EAST ALONG ROUTE 15 FOR 2.7 MI (4.3 KM) TO THE  
 JUNCTION WITH A GRAVEL DRIVE ON THE LEFT (NORTH). THENCE PROCEED NORTH ALONG GRAVEL  
 DRIVE FOR 0.1 MI (0.2 KM), THENCE PROCEED EAST ACROSS A BARB WIRE FENCE AND THROUGH A  
 PASTURE FOR 40 M (131.2 FT) TO THE STATION. THE STATION IS SET IN A LEDGE OUTCROP, 40 M  
 (131.2 FT) EAST OF AND 4 M (13.1 FT) HIGHER THAN THE CENTERLINE OF GRAVEL DRIVE, 12M  
 SOUTH OF UTILITY POLE NUMBER 176-1.

TRAVERSE TIES

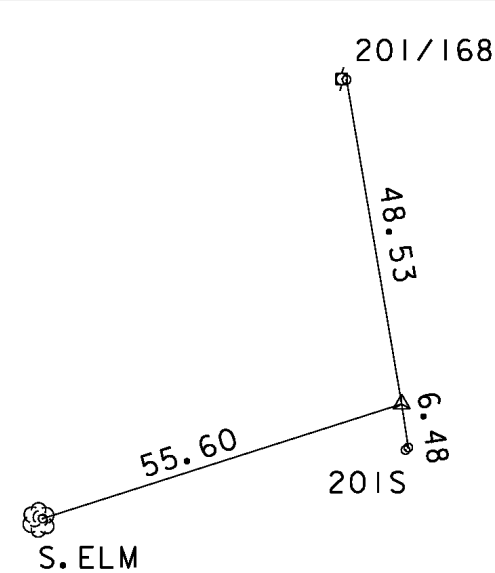
HVCTRL #3

NORTH = 730368.57  
 EAST = 1508316.19  
 ELEV. = 543.04



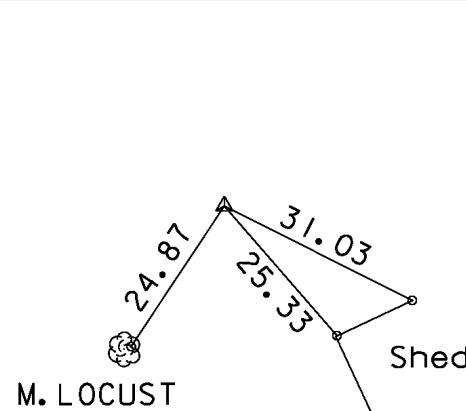
HVCTRL #4

NORTH = 730469.59  
 EAST = 1509138.34  
 ELEV. = 533.54



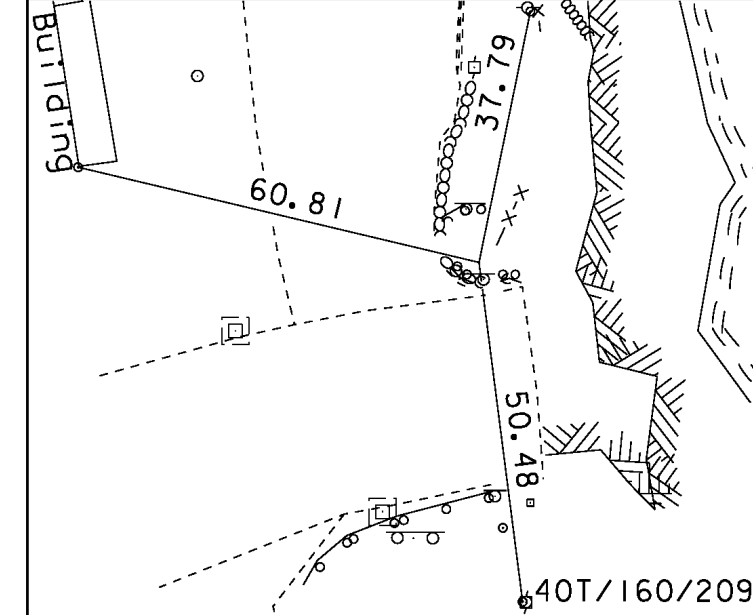
HVCTRL #5

NORTH = 730606.76  
 EAST = 1509646.27  
 ELEV. = 520.48



HVCTRL #6

NORTH = 730924.19  
 EAST = 1510090.03  
 ELEV. = 535.12



\*MAIN TRAVERSE COMPLETED 10/02/2006 BY L. ORVIS P.C & G. HITCHCOCK

ALIGNMENT TIES

NORTH =  
 EAST =

NORTH =  
 EAST =

NORTH =  
 EAST =

NORTH =  
 EAST =

NORTH =  
 EAST =

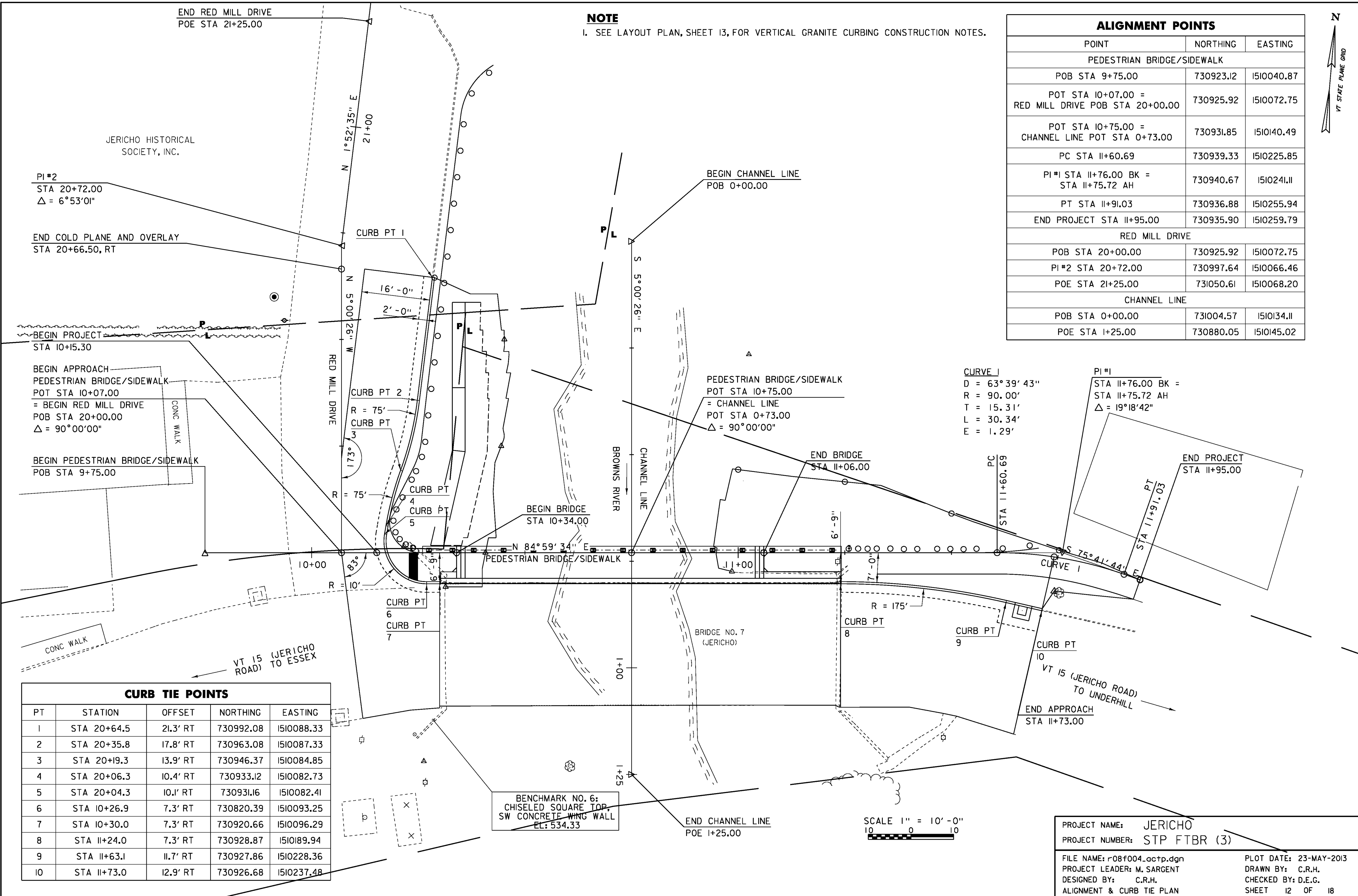
DATUM	
VERTICAL	NAD 88
HORIZONTAL	NAVD 83(92)
ADJUSTMENT	None

NOT TO SCALE

PROJECT NAME: JERICO  
 PROJECT NUMBER: STP FTBR (3)

FILE NAME: r08f004.tle.dgn	PLOT DATE: 23-MAY-2013
PROJECT LEADER: M. SARGENT	DRAWN BY: C.R.H.
DESIGNED BY: C.R.H.	CHECKED BY: D.E.G.
TIE SHEET	SHEET 10 OF 18

Original Drawing - Ink on polymer meeting the requirements of 27 V.S.A. § 1403



**NOTE**  
 1. SEE LAYOUT PLAN, SHEET 13, FOR VERTICAL GRANITE CURBING CONSTRUCTION NOTES.

ALIGNMENT POINTS		
POINT	NORTHING	EASTING
PEDESTRIAN BRIDGE/SIDEWALK		
POB STA 9+75.00	730923.12	1510040.87
POT STA 10+07.00 = RED MILL DRIVE POB STA 20+00.00	730925.92	1510072.75
POT STA 10+75.00 = CHANNEL LINE POT STA 0+73.00	730931.85	1510140.49
PC STA 11+60.69	730939.33	1510225.85
PI #1 STA 11+76.00 BK = STA 11+75.72 AH	730940.67	1510241.11
PT STA 11+91.03	730936.88	1510255.94
END PROJECT STA 11+95.00	730935.90	1510259.79
RED MILL DRIVE		
POB STA 20+00.00	730925.92	1510072.75
PI #2 STA 20+72.00	730997.64	1510066.46
POE STA 21+25.00	731050.61	1510068.20
CHANNEL LINE		
POB STA 0+00.00	731004.57	1510134.11
POE STA 1+25.00	730880.05	1510145.02

**CURVE 1**  
 D = 63° 39' 43"  
 R = 90.00'  
 T = 15.31'  
 L = 30.34'  
 E = 1.29'

**PI #1**  
 STA 11+76.00 BK =  
 STA 11+75.72 AH  
 Δ = 19° 18' 42"

CURB TIE POINTS				
PT	STATION	OFFSET	NORTHING	EASTING
1	STA 20+64.5	21.3' RT	730992.08	1510088.33
2	STA 20+35.8	17.8' RT	730963.08	1510087.33
3	STA 20+19.3	13.9' RT	730946.37	1510084.85
4	STA 20+06.3	10.4' RT	730933.12	1510082.73
5	STA 20+04.3	10.1' RT	730931.16	1510082.41
6	STA 10+26.9	7.3' RT	730820.39	1510093.25
7	STA 10+30.0	7.3' RT	730920.66	1510096.29
8	STA 11+24.0	7.3' RT	730928.87	1510189.94
9	STA 11+63.1	11.7' RT	730927.86	1510228.36
10	STA 11+73.0	12.9' RT	730926.68	1510237.48

BENCHMARK NO. 6:  
 CHISELED SQUARE TOP,  
 SW CONCRETE WING WALL  
 EL: 534.33

SCALE 1" = 10'-0"  
 10 0 10

PROJECT NAME: JERICH  
 PROJECT NUMBER: STP FTBR (3)  
 FILE NAME: r08f004.actp.dgn  
 PROJECT LEADER: M. SARGENT  
 DESIGNED BY: C.R.H.  
 ALIGNMENT & CURB TIE PLAN  
 PLOT DATE: 23-MAY-2013  
 DRAWN BY: C.R.H.  
 CHECKED BY: D.E.G.  
 SHEET 12 OF 18