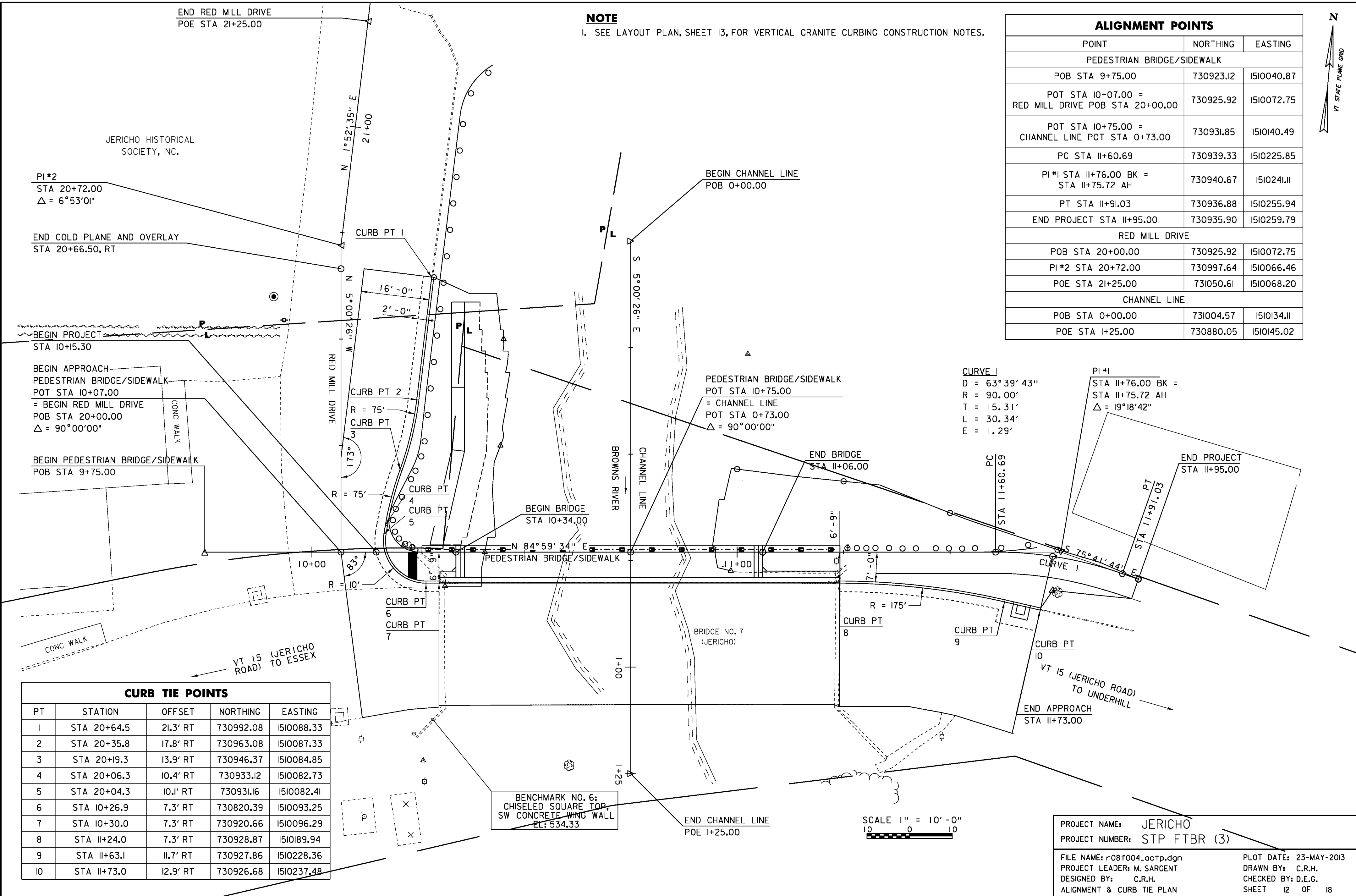


Original Drawing - Ink on polymer meeting the requirements of 27 V.S.A. § 1403



**NOTE**  
 1. SEE LAYOUT PLAN, SHEET 13, FOR VERTICAL GRANITE CURBING CONSTRUCTION NOTES.

ALIGNMENT POINTS		
POINT	NORTHING	EASTING
PEDESTRIAN BRIDGE/SIDEWALK		
POB STA 9+75.00	730923.12	1510040.87
POT STA 10+07.00 = RED MILL DRIVE POB STA 20+00.00	730925.92	1510072.75
POT STA 10+75.00 = CHANNEL LINE POT STA 0+73.00	730931.85	1510140.49
PC STA 11+60.69	730939.33	1510225.85
PI #1 STA 11+76.00 BK = STA 11+75.72 AH	730940.67	1510241.11
PT STA 11+91.03	730936.88	1510255.94
END PROJECT STA 11+95.00	730935.90	1510259.79
RED MILL DRIVE		
POB STA 20+00.00	730925.92	1510072.75
PI #2 STA 20+72.00	730997.64	1510066.46
POE STA 21+25.00	731050.61	1510068.20
CHANNEL LINE		
POB STA 0+00.00	731004.57	1510134.11
POE STA 1+25.00	730880.05	1510145.02

CURB TIE POINTS				
PT	STATION	OFFSET	NORTHING	EASTING
1	STA 20+64.5	21.3' RT	730992.08	1510088.33
2	STA 20+35.8	17.8' RT	730963.08	1510087.33
3	STA 20+19.3	13.9' RT	730946.37	1510084.85
4	STA 20+06.3	10.4' RT	730933.12	1510082.73
5	STA 20+04.3	10.1' RT	730931.16	1510082.41
6	STA 10+26.9	7.3' RT	730820.39	1510093.25
7	STA 10+30.0	7.3' RT	730920.66	1510096.29
8	STA 11+24.0	7.3' RT	730928.87	1510189.94
9	STA 11+63.1	11.7' RT	730927.86	1510228.36
10	STA 11+73.0	12.9' RT	730926.68	1510237.48

PROJECT NAME: JERICH  
 PROJECT NUMBER: STP FTBR (3)  
 FILE NAME: r08f004.actp.dgn  
 PROJECT LEADER: M. SARGENT  
 DESIGNED BY: C.R.H.  
 ALIGNMENT & CURB TIE PLAN  
 PLOT DATE: 23-MAY-2013  
 DRAWN BY: C.R.H.  
 CHECKED BY: D.E.G.  
 SHEET 12 OF 18