

2
DOUGLAS H. TURNER,
SHARON A. TURNER,
MARION C. TURNER (LIFE ESTATE)
 joined by
VERMONT LAND TRUST, INC.
 and
EDITH D. ILER,
W. MATTHEW ILER, JR.,
 TRUSTEES UNDER "DECLARATION
 OF TRUST ESTABLISHING 1997 MILK
 STREET TRUST"

1B
DOUGLAS H. TURNER,
SHARON A. TURNER,
MARION C. TURNER (LIFE ESTATE)
 joined by
VERMONT LAND TRUST, INC.

3
EDITH D. ILER,
W. MATTHEW ILER, JR.,
 TRUSTEES UNDER "DECLARATION
 OF TRUST ESTABLISHING 1997 MILK
 STREET TRUST"

1A
DOUGLAS H. TURNER,
SHARON A. TURNER,
MARION C. TURNER (LIFE ESTATE)
 joined by
VERMONT LAND TRUST, INC.

LINES SHOWN ON THIS PLAN AS EXISTING
 PROPERTY LINES P/L ARE BELIEVED TO
 BE ACCURATE BUT SHOULD NOT BE RELIED
 UPON FOR PURPOSES UNRELATED TO THE
 STATE OF VERMONT'S ACQUISITION OF LAND
 AND RIGHTS FOR THIS PROJECT.

**NF
 JACKSON**

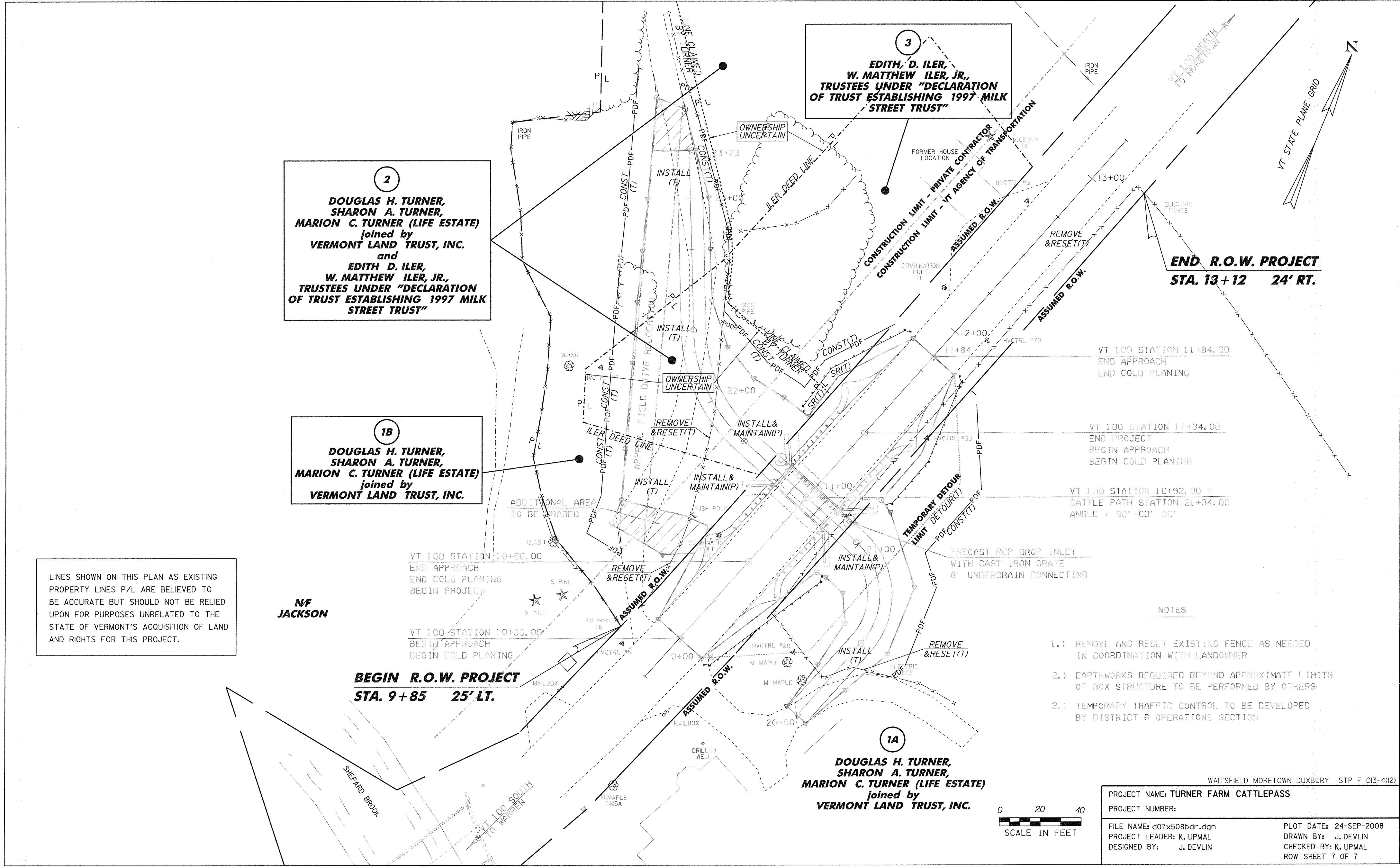
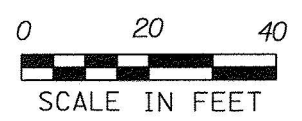
**BEGIN R.O.W. PROJECT
 STA. 9+85 25' LT.**

**END R.O.W. PROJECT
 STA. 13+12 24' RT.**

- NOTES
- 1.) REMOVE AND RESET EXISTING FENCE AS NEEDED IN COORDINATION WITH LANDOWNER
 - 2.) EARTHWORKS REQUIRED BEYOND APPROXIMATE LIMITS OF BOX STRUCTURE TO BE PERFORMED BY OTHERS
 - 3.) TEMPORARY TRAFFIC CONTROL TO BE DEVELOPED BY DISTRICT 6 OPERATIONS SECTION

WAITSFIELD MORETOWN DUXBURY STP F 013-4(12)

PROJECT NAME: TURNER FARM CATTLEPASS	
PROJECT NUMBER:	
FILE NAME: d07x508bdr.dgn	PLOT DATE: 24-SEP-2008
PROJECT LEADER: K. UPMAL	DRAWN BY: J. DEVLIN
DESIGNED BY: J. DEVLIN	CHECKED BY: K. UPMAL
	ROW SHEET 7 OF 7



SEP 26 2008