

Original Drawing - Ink on polymer meeting the requirements of 27 V.S.A. § 1403

STATE OF VERMONT AGENCY OF TRANSPORTATION



PROPOSED IMPROVEMENT BRIDGE PROJECT

TOWN OF BARRE

COUNTY OF WASHINGTON

ROUTE NO : TH 7 (BRIDGE STREET) MAJOR COLLECTOR BRIDGE NO : 11

PROJECT LOCATION : BRIDGE NO 11 IS LOCATED ON TH 7 (BRIDGE STREET), APPROXIMATELY 0.10 MILES WEST OF THE INTERSECTION WITH ROUTE 14

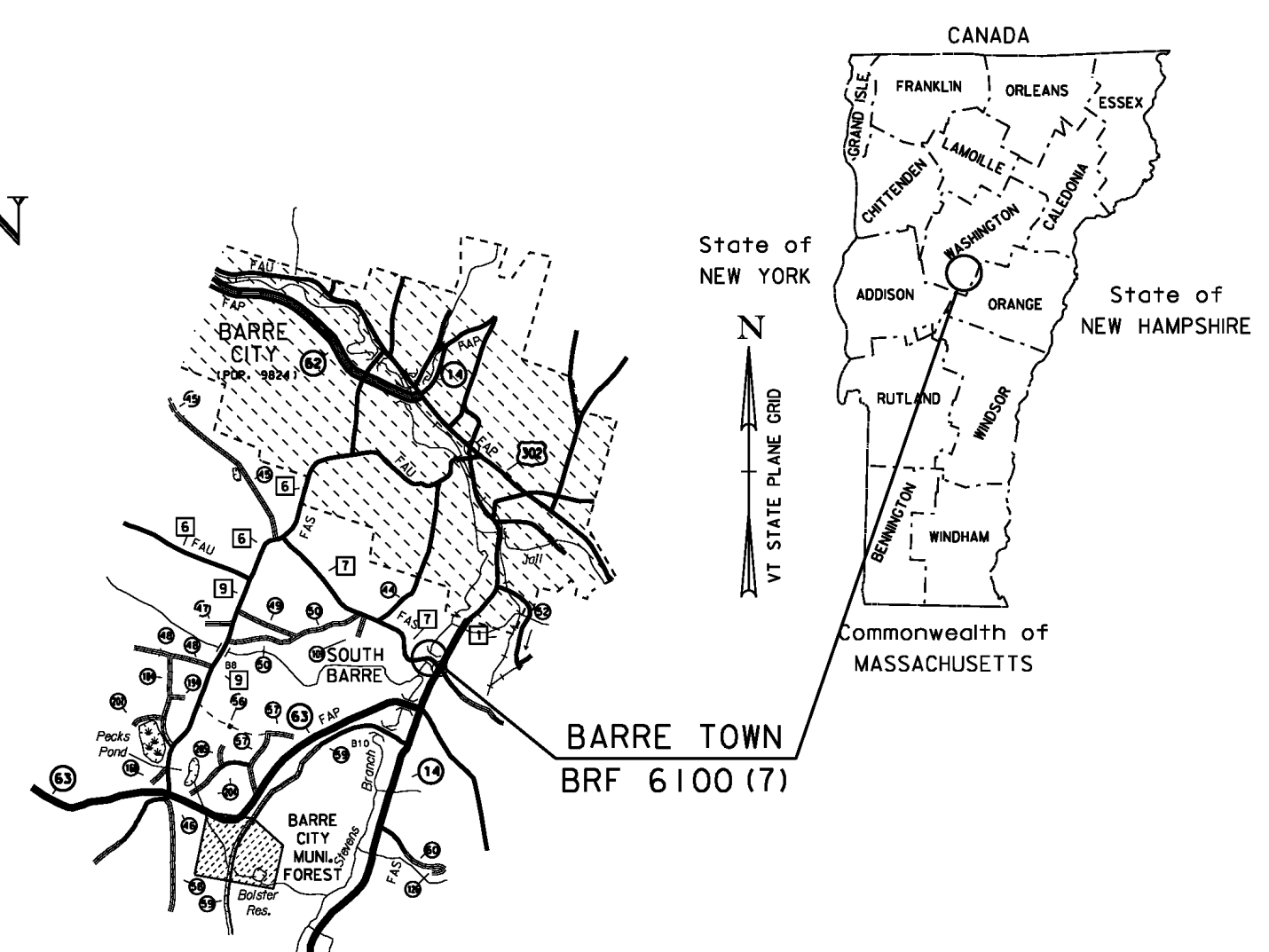
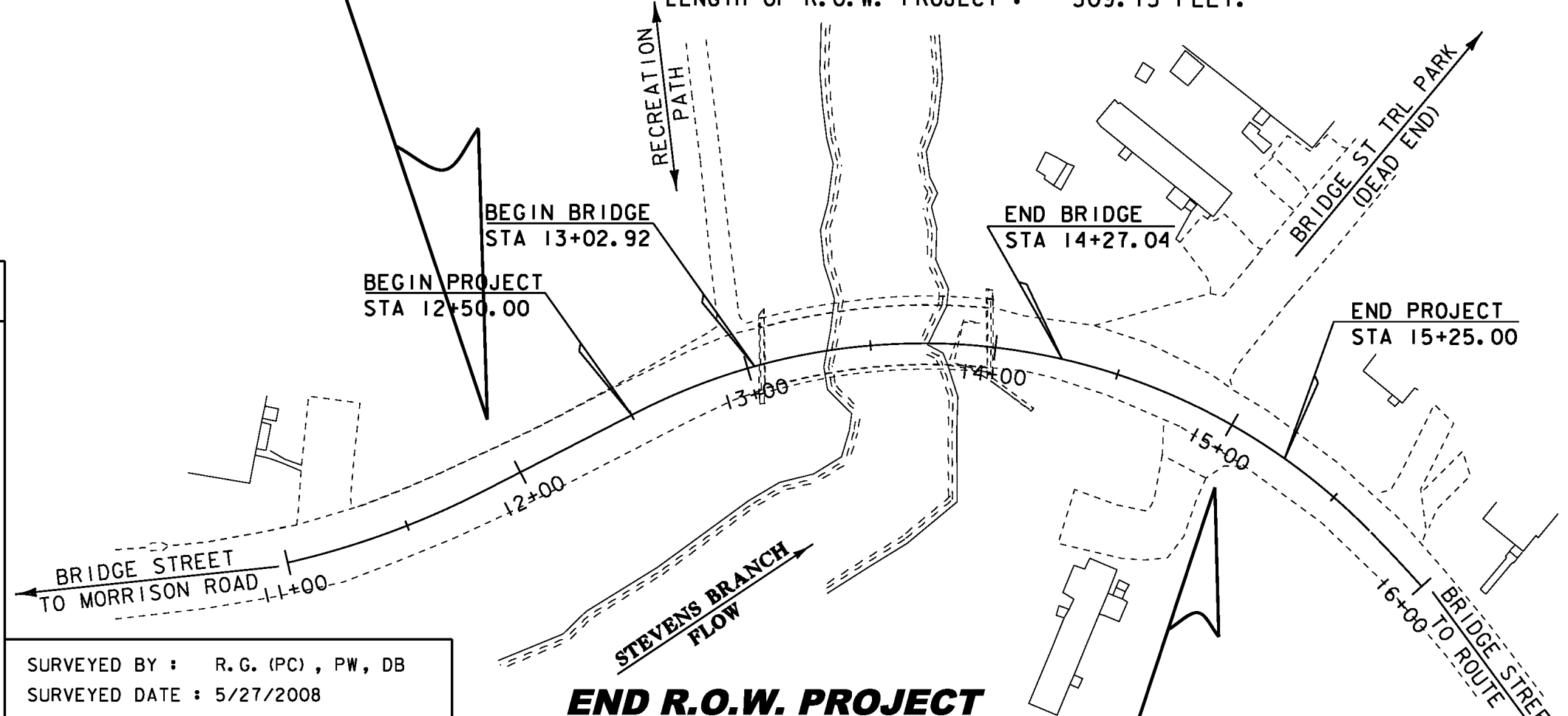
PROJECT DESCRIPTION : REPLACEMENT OF BRIDGE NO 11 ON EXISTING ALIGNMENT, INCLUDING RELATED CHANNEL AND APPROACH WORK.

LENGTH OF STRUCTURE : 124.12 FEET.
LENGTH OF ROADWAY : 150.88 FEET.
LENGTH OF PROJECT : 275.00 FEET.
LENGTH OF R.O.W. PROJECT : 309.15 FEET.

R.O.W. PLANS

BEGIN R.O.W. PROJECT

BRF 6100 (7)
STA. 11+97.54
24.75' LT



QUALITY ASSURANCE PROGRAM: LEVEL 2

CONVENTIONAL SYMBOLS

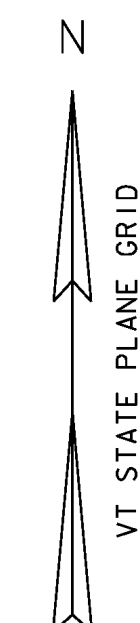
COUNTY LINE	
TOWN LINE	
LIMITS OF ACCESS	
POINT OF ACCESS	
FENCE LINE	
STONE WALL	
TRAVELED WAY	
GUARD RAIL	
RAILROAD	
SURVEY LINE	
CULVERT	
POWER POLE	
TELEPHONE POLE	
TREES	
CONTROL OF ACCESS	
PROPERTY LINE	
R.O.W. TAKING LINE	
SLOPE RIGHTS	
TOP OF CUT	
TOE OF SLOPE	

SURVEYED BY : R.G. (PC), PW, DB
SURVEYED DATE : 5/27/2008

DATUM
VERTICAL NAVD 88
HORIZONTAL NAD 83 (92)

END R.O.W. PROJECT
BRF 6100(7)
STA. 15+06.69
24.75' RT

SCALE 1" = 40' - 0"
40 0 40



ALL DRIVES AS INDICATED ON PLANS ARE SUBJECT TO PERMITS PURSUANT TO TITLE 19 V.S.A. 1111

THESE PLANS ARE SUBJECT TO SUCH ENGINEERING CHANGES AS MAY BE REQUIRED BY THE FEDERAL HIGHWAY ADMINISTRATION OR THE DIRECTOR OF PROGRAM DEVELOPMENT.
CONSTRUCTION IS TO BE CARRIED ON IN ACCORDANCE WITH THESE PLANS AND THE STANDARD SPECIFICATIONS FOR CONSTRUCTION DATED 2006, AS APPROVED BY THE FEDERAL HIGHWAY ADMINISTRATION ON JUNE 15, 2006 FOR USE ON THIS PROJECT, INCLUDING ALL SUBSEQUENT REVISIONS AND SUCH REVISED SPECIFICATIONS AND SPECIAL PROVISIONS AS ARE INCORPORATED IN THESE PLANS.

DIRECTOR OF PROGRAM DEVELOPMENT
APPROVED <u>ROBERT M. WHITE</u> DATE <u>6-13-11</u>
PROJECT MANAGER :
PROJECT NAME : BARRE TOWN
PROJECT NUMBER : BRF 6100 (7)
SHEET 1 OF 4 SHEETS

Original Drawing - Ink on polymer meeting the requirements of 27 V.S.A. § 1403

**HD STEEL BEAM GUARDRAIL, GALVANIZED
(8 FT) POSTS**
STA 11+75.00 (MATCH INTO EXISTING) - STA 12+98.50 RT

HD STEEL BEAM GUARDRAIL, GALVANIZED
STA 13+04.30 - STA 13+08.00 LT
STA 14+24.00 - STA 14+56.39 LT
STA 14+29.50 - STA 14+67.89 RT

REMOVAL AND DISPOSAL OF GUARDRAIL
STA 11+75.00 - STA 13+00.40 RT
STA 12+96.10 - STA 13+00.20 RT
STA 13+07.90 - STA 13+11.30 LT
STA 13+96.90 - STA 14+21.00 LT
STA 14+00.90 - STA 14+39.60 RT

CONSTRUCT PAVED APRONS
STA 12+98.69 LT - RECREATION PATH - APRON 43'-0"
STA 14+79.77 LT - TRAILER PARK - APRON 32'-0"
STA 14+92.06 RT - DRIVE - APRON 5'-0"
STA 15+73.89 LT - DRIVE - APRON 5'-0"

**BEGIN R.O.W. PROJECT
STA. 11+97.54 LT**

LAVIGNE, NORMA R.

REMOVAL OF EXISTING CURB (GRANITE)
STA 11+75.00 - STA 12+88.90 LT
VERTICAL GRANITE CURB
STA 11+75.00 - STA 12+88.15 LT
STA 14+29.50 - STA 14+75.00 RT

ANCHOR FOR STEEL BEAM RAIL
STA 13+04.00 OFFSET 34.54 LT (REC. PATH)
STA 14+49.00 LT
STA 14+59.73 RT

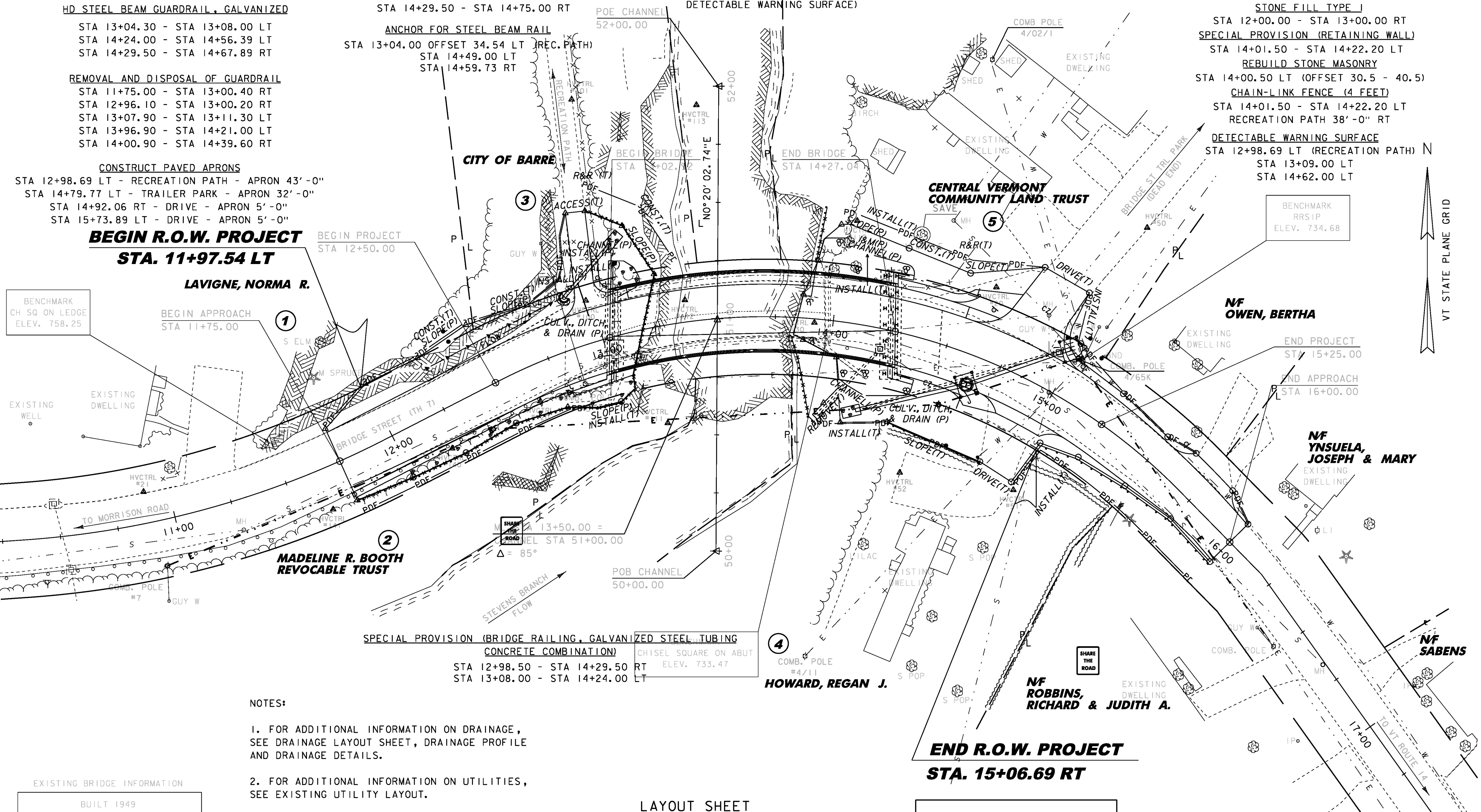
PORTLAND CEMENT CONCRETE SIDEWALK, 5 INCH
STA 14+23.70 - STA 14+66.85 LT
STA 12+93.93 - STA 13+02.93 LT
(3' X 9' PAD RECREATION PATH
DETECTABLE WARNING SURFACE)

REMOVAL OF EXISTING FENCE
STA 12+95.70 - STA 13+02.20 - 44' LT
STA 12+99.80 - STA 13+05.30 - 35' LT

REMOVING AND RESETTING FENCE
STA 14+25.17 - STA 14+45.45 - 40' LT
STA 15+04.68 - STA 15+32.85 - 30' RT

**SLOPE STABILIZATION W/
STONE FILL TYPE I**
STA 12+00.00 - STA 13+00.00 RT
SPECIAL PROVISION (RETAINING WALL)
STA 14+01.50 - STA 14+22.20 LT
REBUILD STONE MASONRY
STA 14+00.50 LT (OFFSET 30.5 - 40.5)
CHAIN-LINK FENCE (4 FEET)
STA 14+01.50 - STA 14+22.20 LT
RECREATION PATH 38'-0" RT

DETECTABLE WARNING SURFACE
STA 12+98.69 LT (RECREATION PATH) N
STA 13+09.00 LT
STA 14+62.00 LT



- NOTES:
- FOR ADDITIONAL INFORMATION ON DRAINAGE, SEE DRAINAGE LAYOUT SHEET, DRAINAGE PROFILE AND DRAINAGE DETAILS.
 - FOR ADDITIONAL INFORMATION ON UTILITIES, SEE EXISTING UTILITY LAYOUT.

EXISTING BRIDGE INFORMATION

BUILT 1949
STEEL GIRDER, CONCRETE DECK
STEELWORK & PAINTING 2002
1 SPAN @ 90', 94' OVERALL
NO SIDEWALKS
26.9' ROADWAY (CURB TO CURB)
STEEL RAILING

LAYOUT SHEET
SCALE 1" = 20'-0"
20 0 20

LINES SHOWN ON THIS PLAN AS EXISTING PROPERTY LINES P/L ARE BELIEVED TO BE ACCURATE BUT SHOULD NOT BE RELIED UPON FOR PURPOSES UNRELATED TO THE STATE OF VERMONT'S ACQUISITION OF LAND AND RIGHTS FOR THIS PROJECT.

PROJECT NAME: BARRE TOWN
PROJECT NUMBER: BRP 6100(7)

FILE NAME: s06j002bdr.dgn
PROJECT LEADER: J. LACROIX
DESIGNED BY: T. FILLBACH
ROW SHEET 16 OF 16 SHEETS

PLOT DATE: 23-OCT-2017
DRAWN BY: J. SALVATORI
CHECKED BY: T. FILLBACH
SHEET 4 OF 4

Original Drawing - Ink on polymer meeting the requirements of 27 V.S.A. § 1403

GPS CONTROL POINTS

HVCTRL #1#

So. Barre Az MK
 N = 608573.40
 E = 1634218.22
 ELEV. = 838.29

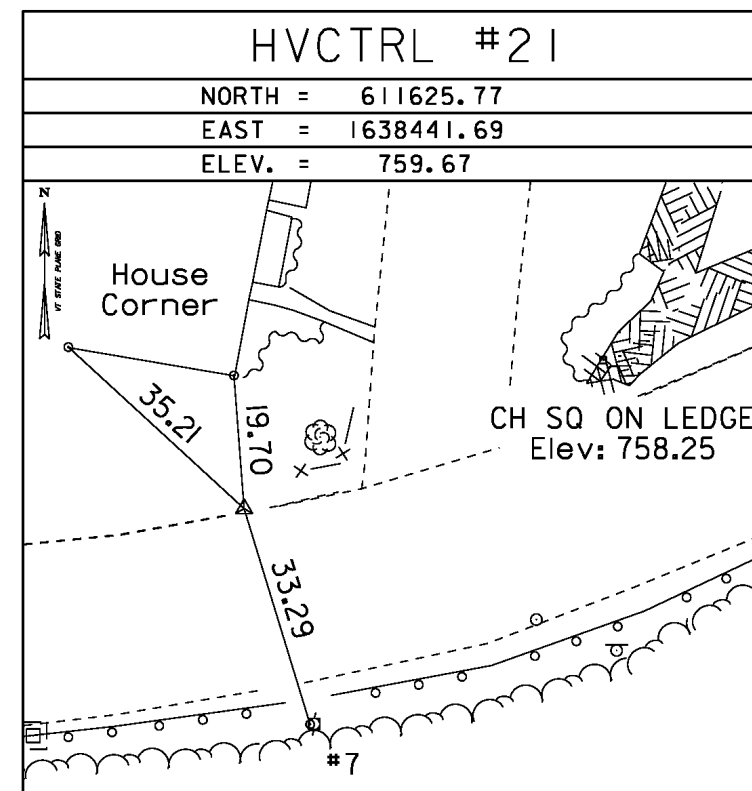
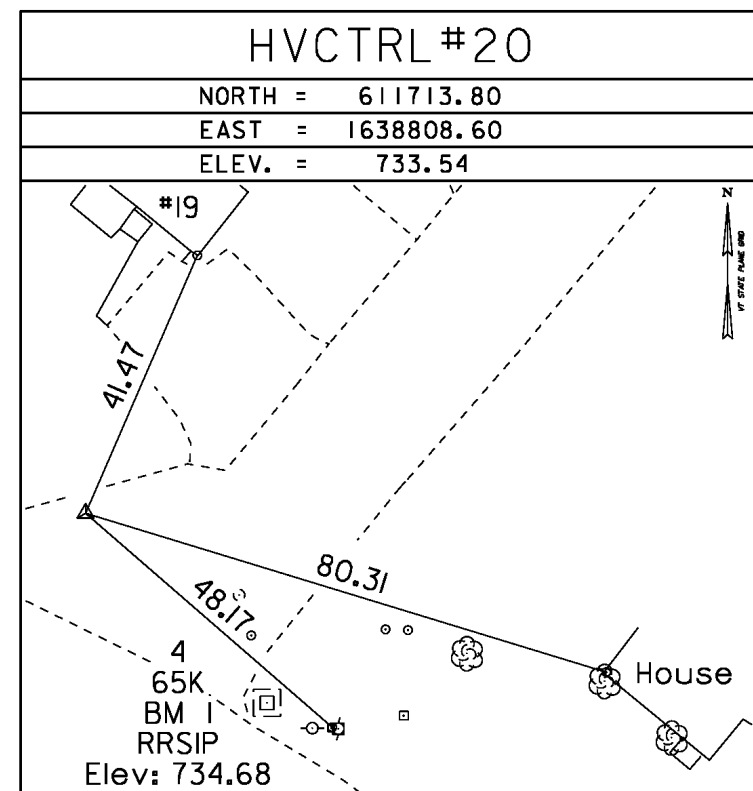
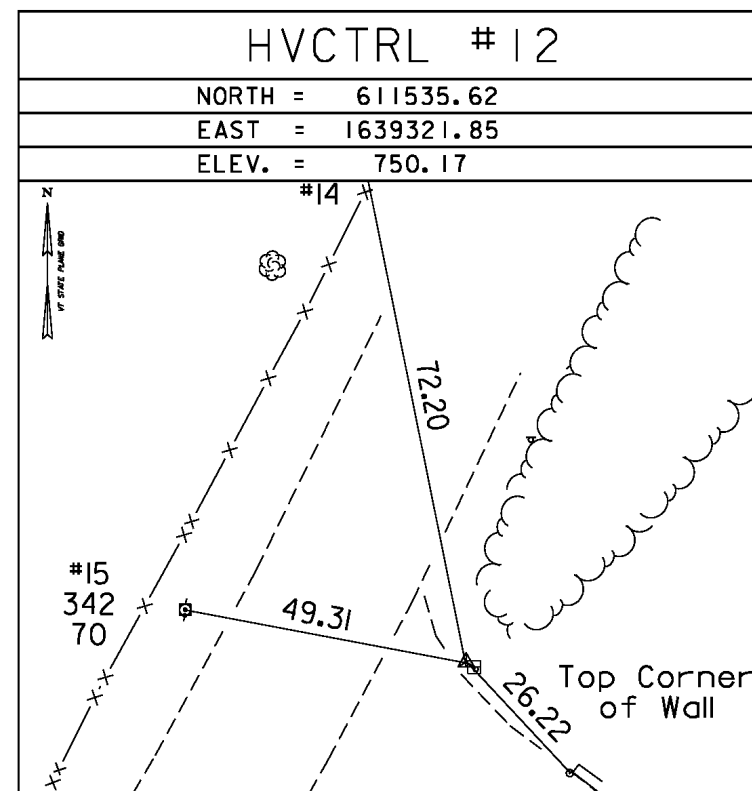
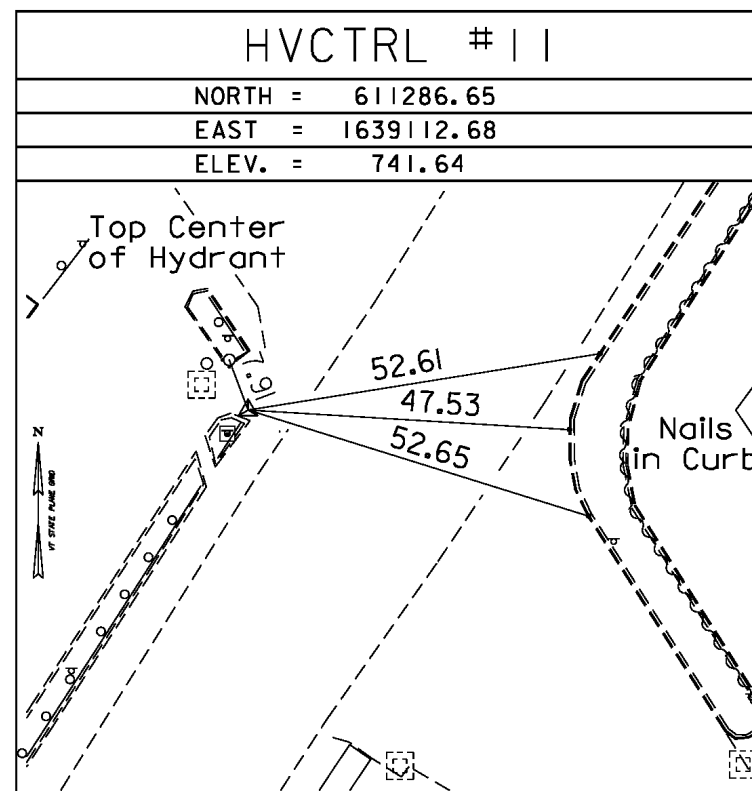
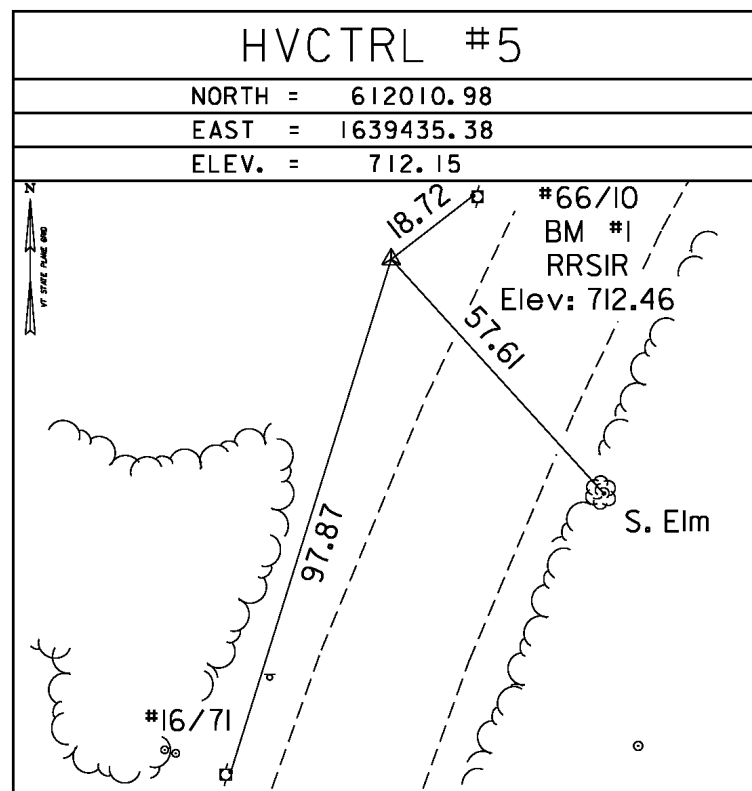
TO REACH FROM THE JUNCTION OF VERMONT ROUTE 63 AND VERMONT ROUTE 14 IN SOUTH BARRE PROCEED WESTERLY ALONG ROUTE 63 FOR 0.9 MI (1.4 KM) TO THE MARK ON THE LEFT. TO REACH FROM THE JUNCTION OF VERMONT ROUTE 63 AND MILLER ROAD (EXT) PROCEED EASTERLY ALONG ROUTE 63 FOR 1.1 MI (1.8 KM) TO THE MARK ON THE RIGHT. THE MARK IS SET IN A 5 FT (1.5 M) WIDE X 3 FT (0.9 M) HIGH ROCK OUTCROP. THE MARK IS LOCATED 59 FT (18.0 M) SOUTHWEST OF A 2 FOOT (0.6 M) SQUARE D1, 31 FT (9.4 M) SOUTH OF AND 6 FT (1.8 M) HIGHER THAN THE SOUTH EDGE OF VERMONT ROUTE 63.

HVCTRL #2

So. Barre
 N = 610161.99
 E = 1637191.18
 ELEV. = 655.67

TO REACH FROM THE JUNCTION OF VERMONT ROUTE 63 AND VERMONT ROUTE 14 IN SOUTH BARRE PROCEED WESTERLY ALONG ROUTE 63 FOR 0.25 MI (0.40 KM) TO THE MARK ON THE RIGHT. TO REACH FROM THE JUNCTION OF VERMONT ROUTE 63 AND MILLER ROAD (EXT) PROCEED EASTERLY ALONG ROUTE 63 FOR 1.75 MI (2.82 KM) TO THE MARK ON THE LEFT. THE MARK IS A 4 INCH SQUARE RIGHT OF WAY MONUMENT WITH A SURVEY DISK SET IN THE TOP AND IS LOCATED 0.7 FT (21.3 CM) BELOW THE ROAD. THE MARK IS LOCATED 119.4 FT (36.4 M) EAST OF AN 18 INCH CGMP CULVERT WITH CONCRETE HEADWALL, 74.9 FT (22.8 M) NORTHWEST OF A TRAFFIC SIGNAL SIGN, 71.5 FT (21.8 M) NORTHEAST OF A DIVIDED HIGHWAY SIGN AND 2.3 FT (0.7 M) NORTH OF THE EDGE OF VERMONT ROUTE 63.

TRAVERSE TIES



• MAIN TRAVERSE COMPLETED 05/27/08 by R. Gilman P.C. & P. Winters & D. Breer

ALIGNMENT TIES

NORTH =
EAST =
ELEV. =

NORTH =
EAST =
ELEV. =

NORTH =
EAST =
ELEV. =

NORTH =
EAST =
ELEV. =

NORTH =
EAST =
ELEV. =

DATUM	
VERTICAL	NAVD 88
HORIZONTAL	NAD 83 (92)
ADJUSTMENT	Compass

PROJECT NAME:	BARRE TOWN
PROJECT NUMBER:	BRF 6100 (7)
FILE NAME:	06j002\survey\06j002t1.dgn
PROJECT LEADER:	J. LACROIX
DESIGNED BY:	SURVEY
PLOT DATE:	23-OCT-2017
DRAWN BY:	R. BULLOCK
CHECKED BY:	
ROW SHEET	8 OF 16 SHEETS