

Original Drawing - Ink on polymer meeting the requirements of 27 V.S.A. § 1403

STATE OF VERMONT AGENCY OF TRANSPORTATION



PROPOSED IMPROVEMENT BRIDGE PROJECT

TOWN OF BARRE

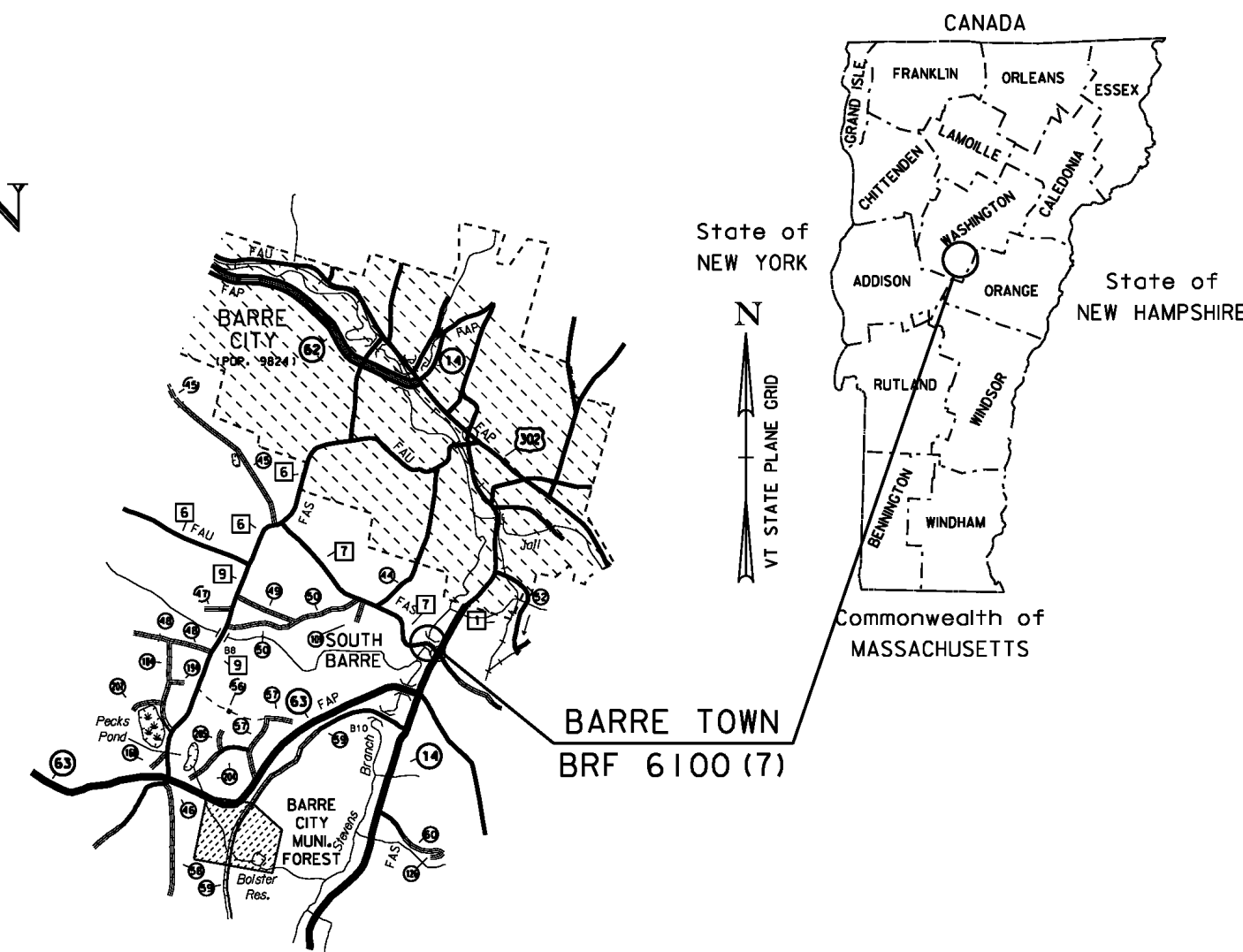
COUNTY OF WASHINGTON

ROUTE NO : TH 7 (BRIDGE STREET) MAJOR COLLECTOR BRIDGE NO : 11

PROJECT LOCATION : BRIDGE NO 11 IS LOCATED ON TH 7 (BRIDGE STREET), APPROXIMATELY 0.10 MILES WEST OF THE INTERSECTION WITH ROUTE 14

PROJECT DESCRIPTION : REPLACEMENT OF BRIDGE NO 11 ON EXISTING ALIGNMENT, INCLUDING RELATED CHANNEL AND APPROACH WORK.

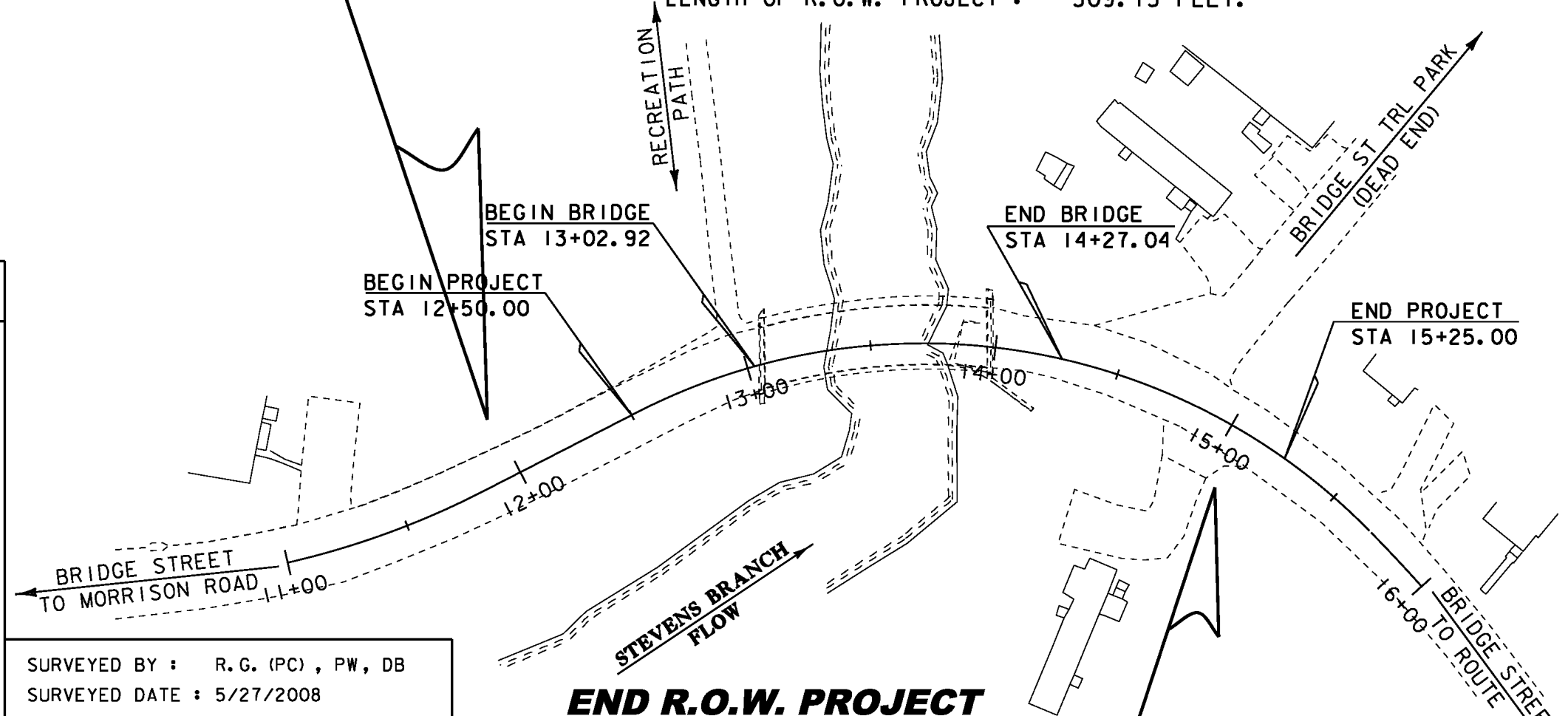
LENGTH OF STRUCTURE : 124.12 FEET.
LENGTH OF ROADWAY : 150.88 FEET.
LENGTH OF PROJECT : 275.00 FEET.
LENGTH OF R.O.W. PROJECT : 309.15 FEET.



R.O.W. PLANS

BEGIN R.O.W. PROJECT

BRF 6100 (7)
STA. 11+97.54
24.75' LT



QUALITY ASSURANCE PROGRAM: LEVEL 2

CONVENTIONAL SYMBOLS

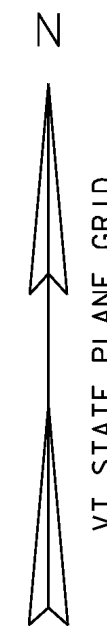
COUNTY LINE	
TOWN LINE	
LIMITS OF ACCESS	
POINT OF ACCESS	
FENCE LINE	
STONE WALL	
TRAVELED WAY	
GUARD RAIL	
RAILROAD	
SURVEY LINE	
CULVERT	
POWER POLE	
TELEPHONE POLE	
TREES	
CONTROL OF ACCESS	
PROPERTY LINE	
R.O.W. TAKING LINE	
SLOPE RIGHTS	
TOP OF CUT	
TOE OF SLOPE	

SURVEYED BY : R.G. (PC), PW, DB
SURVEYED DATE : 5/27/2008

DATUM
VERTICAL NAVD 88
HORIZONTAL NAD 83 (92)

END R.O.W. PROJECT
BRF 6100(7)
STA. 15+06.69
24.75' RT

SCALE 1" = 40' - 0"
40 0 40



ALL DRIVES AS INDICATED ON PLANS ARE SUBJECT TO PERMITS PURSUANT TO TITLE 19 V.S.A. 1111

THESE PLANS ARE SUBJECT TO SUCH ENGINEERING CHANGES AS MAY BE REQUIRED BY THE FEDERAL HIGHWAY ADMINISTRATION OR THE DIRECTOR OF PROGRAM DEVELOPMENT.

CONSTRUCTION IS TO BE CARRIED ON IN ACCORDANCE WITH THESE PLANS AND THE STANDARD SPECIFICATIONS FOR CONSTRUCTION DATED 2006, AS APPROVED BY THE FEDERAL HIGHWAY ADMINISTRATION ON JUNE 15, 2006 FOR USE ON THIS PROJECT, INCLUDING ALL SUBSEQUENT REVISIONS AND SUCH REVISED SPECIFICATIONS AND SPECIAL PROVISIONS AS ARE INCORPORATED IN THESE PLANS.

DIRECTOR OF PROGRAM DEVELOPMENT

APPROVED ROBERT M. WHITE DATE 6-13-11

PROJECT MANAGER :

PROJECT NAME : BARRE TOWN
PROJECT NUMBER : BRF 6100 (7)

SHEET 1 OF 4 SHEETS