

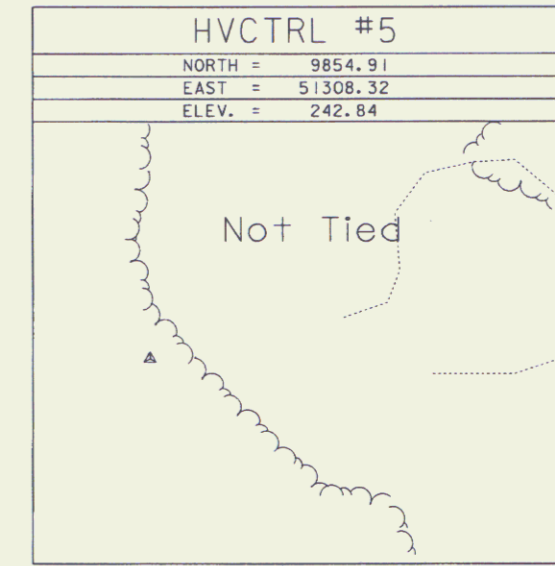
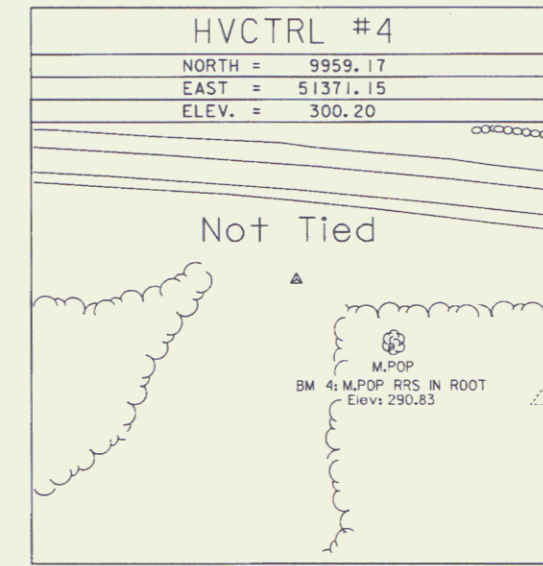
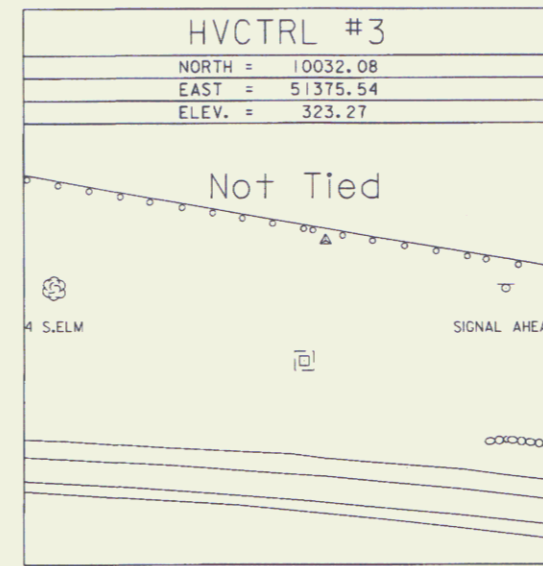
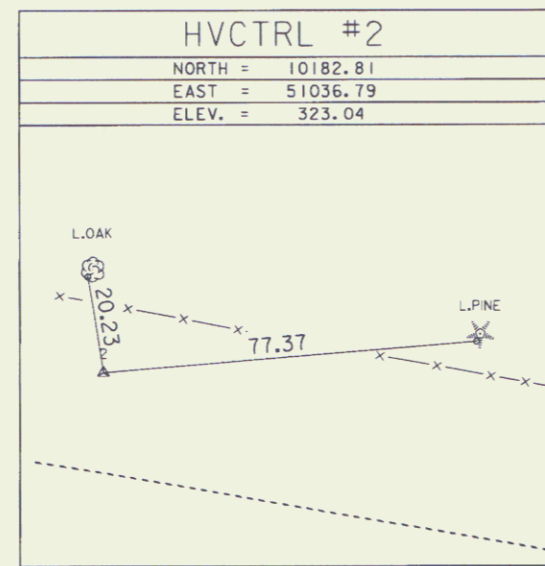
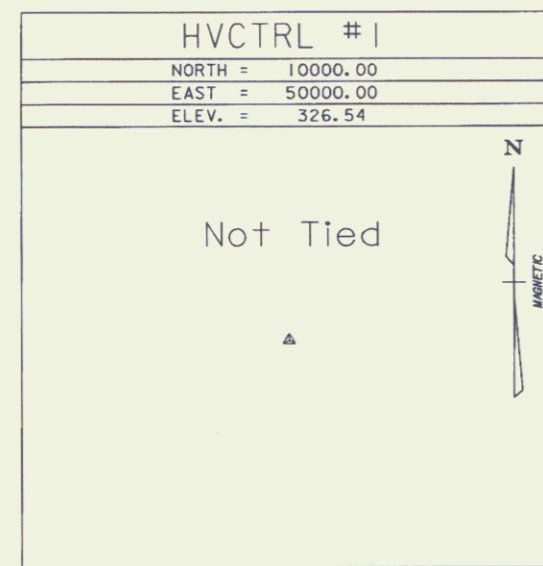
GPS CONTROL POINTS

BM #1
 DESIGNATION
 "NOYES"
 ELEV. = 318.03

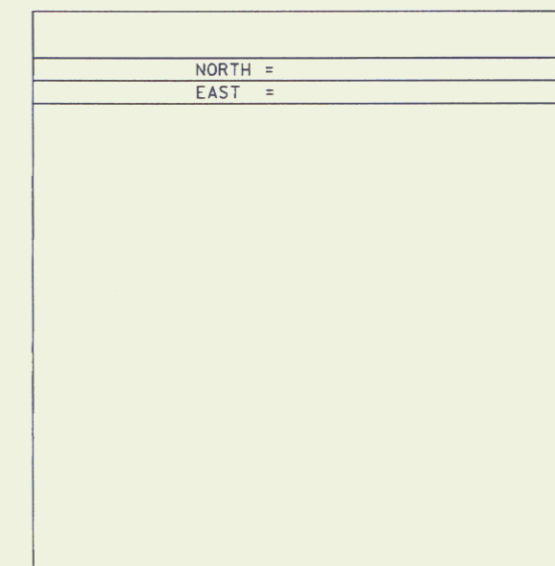
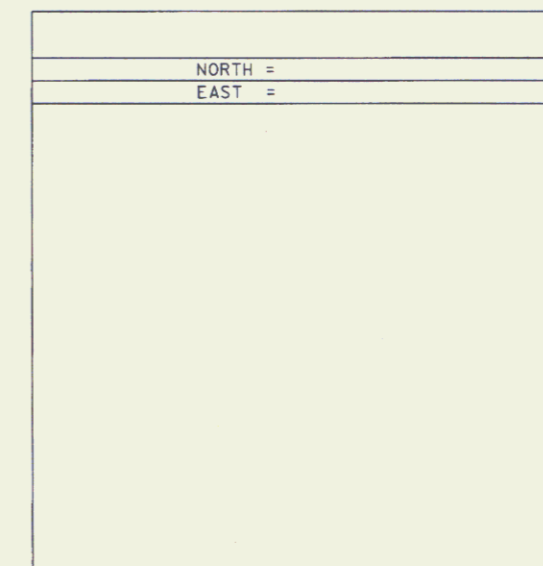
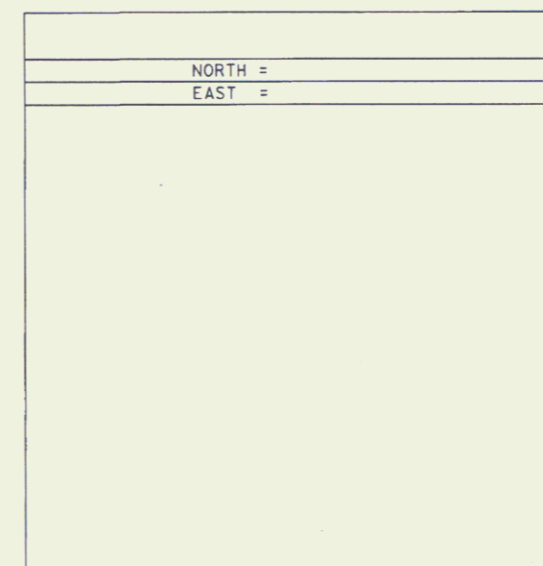
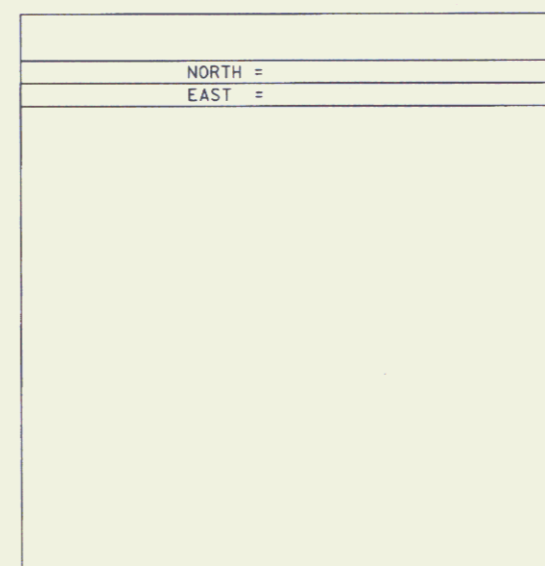
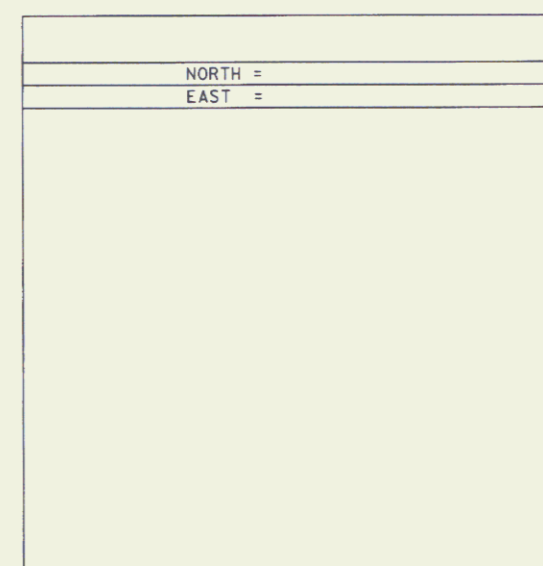
HORIZONTAL COORDINATES ASSUMED

DESCRIBED BY VERMONT AGENCY OF TRANSPORTATION 1977
 TO REACH THE STATION FROM THE LINCOLN INN, GO WEST ALONG VT. ROUTE 15
 APPROXIMATELY 2.6 MILES TO GATE NO. 1 ENTRANCE TO CAMP JOHNSON, ON THE
 NORTHWEST SIDE OF THE ROAD, 251.5 FEET NORTHEAST OF THE CENTERLINE OF
 THE ENTRANCE TO CAMP JOHNSON, 47.8 FEET WEST OF THE CENTER OF A
 MAN-HOLE COVER IN THE SIDEWALK, 18 FEET NORTHWEST OF A DRILLHOLE IN
 THE TOP OF THE CURB ABOVE THE WEST CORNER OF A DRAIN INLET (THIS BEING
 THE SECOND DRAIN INLET NORTHEAST ALONG VT. ROUTE 15 FROM THE ENTRANCE
 TO CAMP JOHNSON), 18.8 FEET SOUTHEAST OF THE RIGHT-OF-WAY FENCE, 8.5
 FEET NORTHWEST OF THE NORTHWEST EDGE OF A BITUMINOUS SIDEWALK, 61.5
 FEET SOUTHWEST OF AN 18-INCH ELM, 38.7 FEET NORTHEAST OF A 20-INCH ELM.

TRAVERSE TIES



ALIGNMENT TIES



SURVEYED BY : VTRANS	PROJECT NAME: ESSEX
SURVEYED DATE :	PROJECT NUMBER: STP 030-1(20)
DATUM	FILE NAME: de206frm.dgn
VERTICAL NAVD 88	PROJECT LEADER: JLS
HORIZONTAL ASSUM. MAG 05	DESIGNED BY: CAA/MBL
ADJUSTMENT NONE	PLOT DATE: 11-FEB-2008
	DRAWN BY: MBL
	CHECKED BY: SDM
	ROW SHEET 3 OF 10