

GPS CONTROL POINTS

HVCTRL #1
 STANDARD DISK STAMPED
 RPB 1965
 N = 420087.76
 E = 1511860.33
 ELEV. = 657.34

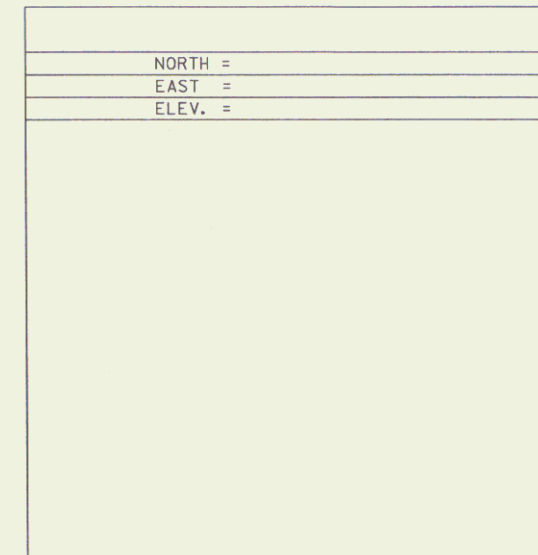
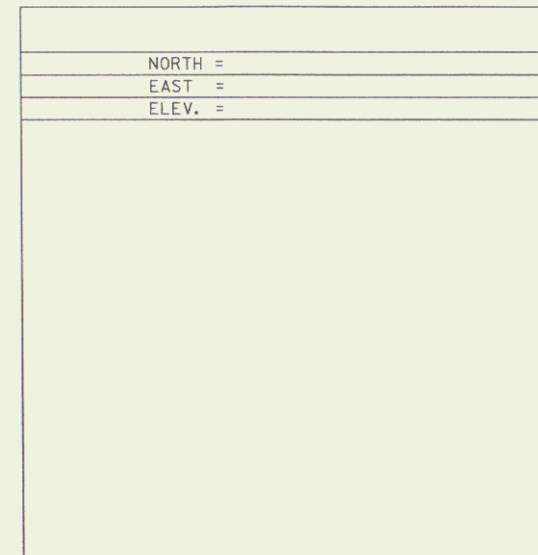
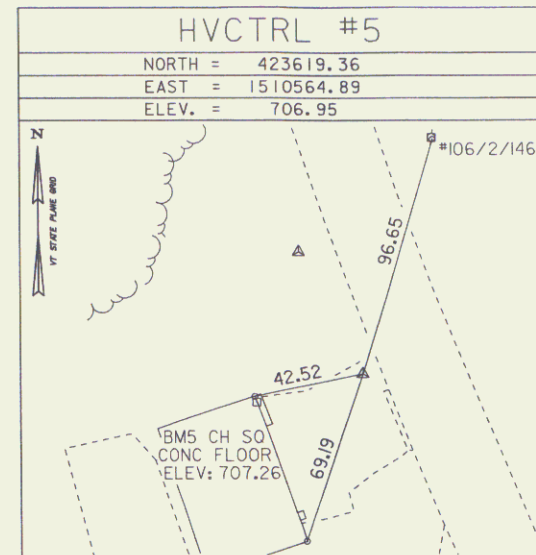
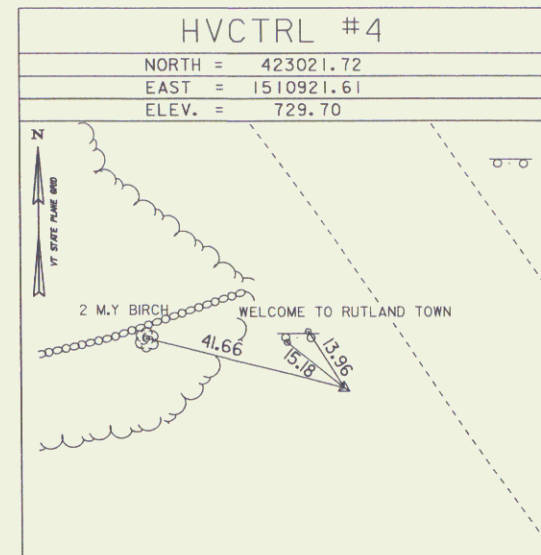
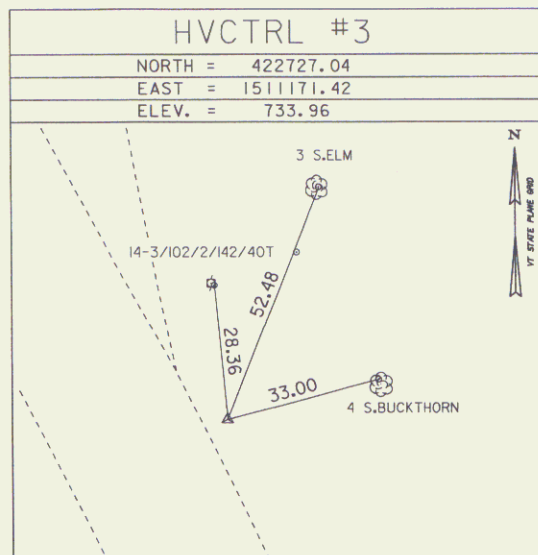
TO REACH FROM THE INTERSECTION OF U.S.ROUTE 7 (NORTH MAIN STREET) AND U.S.ROUTE 4 EAST (WOODSTOCK AVENUE) GO NORTH ALONG U.S.ROUTE 7 FOR 3.1 MI (5.0 KM) TO THE MARK ON THE RIGHT. THE MARK IS SET IN THE TOP OF A 1.2 M (3.9 FT) X 0.8 M (2.6 FT) ROCK OUTCROP WHICH PROJECTS ABOUT 0.9 M (3.0 FT) ON THE WEST EDGE. IT IS 2.8 M (9.2 FT) EAST OF AND ABOUT 1M (3.3 FT) HIGHER THAN THE EAST EDGE OF PAVEMENT OF U.S.ROUTE 7, 35.4 M (116.1 FT) NORTHWEST OF THE NORTHWEST CORNER OF A 2.5 STORY HOUSE, 15.0 M (49.2 FT) SOUTHWEST OF POLE NO.114B/90B, AND 10.0 M (32.8 FT) NORTHWEST OF POLE NO.114/90A AND A FIBERGLASS WITNESS POST.

HVCTRL #2
 STANDARD DISK STAMPED
 RPB AZ MK 2005
 N = 422288.26
 E = 151271.22
 ELEV. = 709.86

TO REACH FROM THE INTERSECTION OF U.S.ROUTE 7 (NORTH MAIN STREET) AND U.S.ROUTE 4 EAST (WOODSTOCK AVENUE) GO NORTH ALONG U.S.ROUTE 7 FOR 1.6 MI TO THE INTERSECTION OF POST ROAD RIGHT. CONTINUE STRAIGHT AHEAD AND GO NORTH ALONG US ROUTE 7 FOR 1.7 MI TO THE SITE OF THE MARK ON THE LEFT. THE MARK IS SET IN THE TOP OF A 0.5 M (1.6 FT) X 0.4 M (1.3 FT) BOULDER WHICH PROJECTS ABOUT 10 CM (.3 FT) ABOVE GROUND SURFACE. IT IS 8.5M (27.9 FT) WEST OF AND ABOUT 1.5 M (5 FT) LOWER THAN THE CENTERLINE OF U.S.ROUTE 7, 7.2 M (23.6 FT) NORTH NORTHEAST OF POLE #99 1/2\2\123X, 54.9 M (180 FT) SOUTH OF POLE #2\124\355\100, AND 0.3 M (1 FT) WEST OF A FIBERGLASS WITNESS POST.

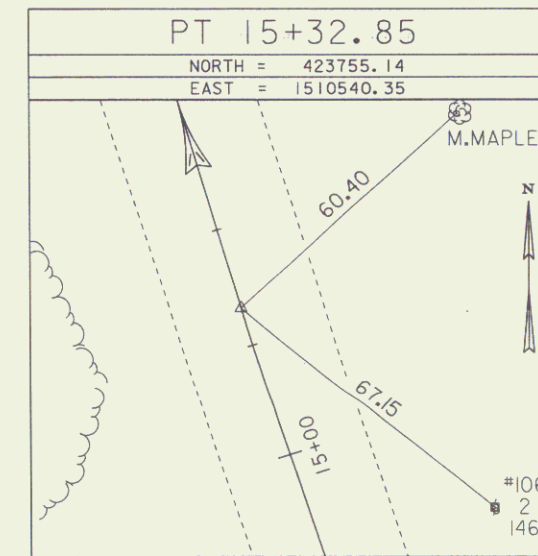
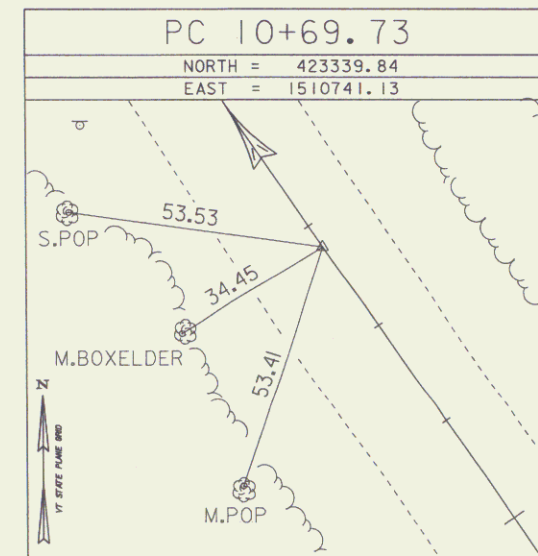
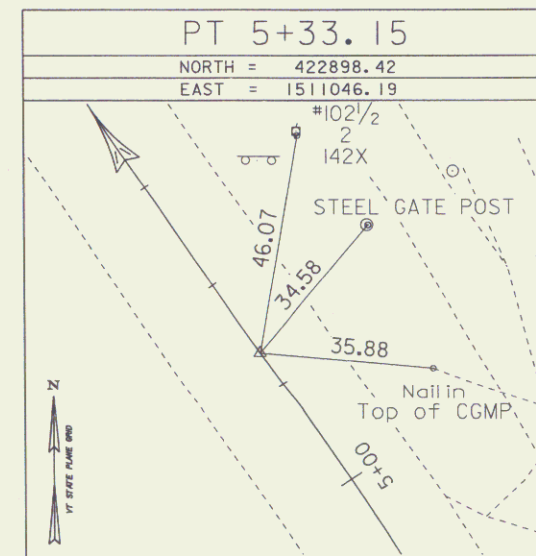
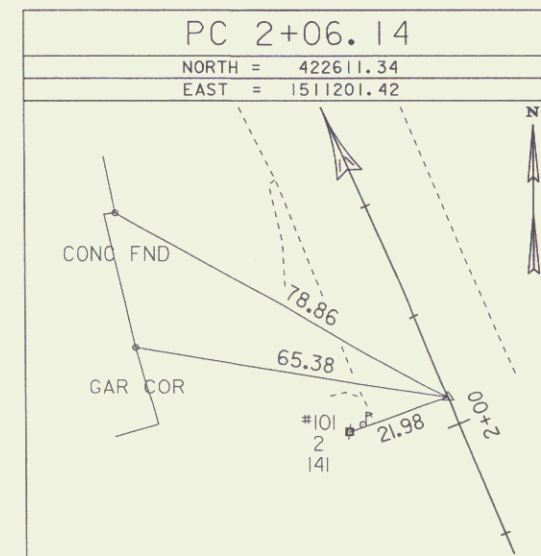
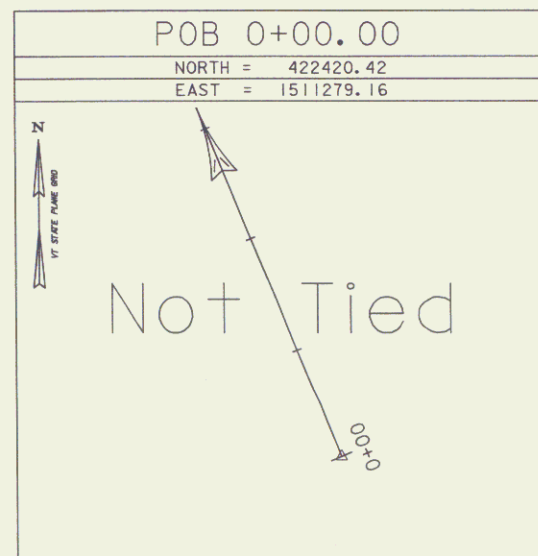
• DESCRIPTION PROVIDED BY VERMONT AGENCY OF TRANSPORTATION GEODETIC SURVEY UNIT

TRAVERSE TIES



• MAIN TRAVERSE COMPLETED August 8, 2005 by L. Orvis P.C. & J. Dunham-Friel

ALIGNMENT TIES



• ALIGNMENT STAKED 05/30/06 by L. Orvis P.C. & R. Bullock

DATUM	
VERTICAL	NAVD 88
HORIZONTAL	NAD 83 (92)
ADJUSTMENT	Compass

PROJECT NAME:	Statewide
PROJECT NUMBER:	STP INTS(I)
FILE NAME:	05k114\survey\05k114\1.dgn
PROJECT LEADER:	R. Bullock
DESIGNED BY:	
PLOT DATE:	17-APR-2007
DRAWN BY:	R. Bullock
CHECKED BY:	
ROW SHEET 4 OF 10 SHEETS	