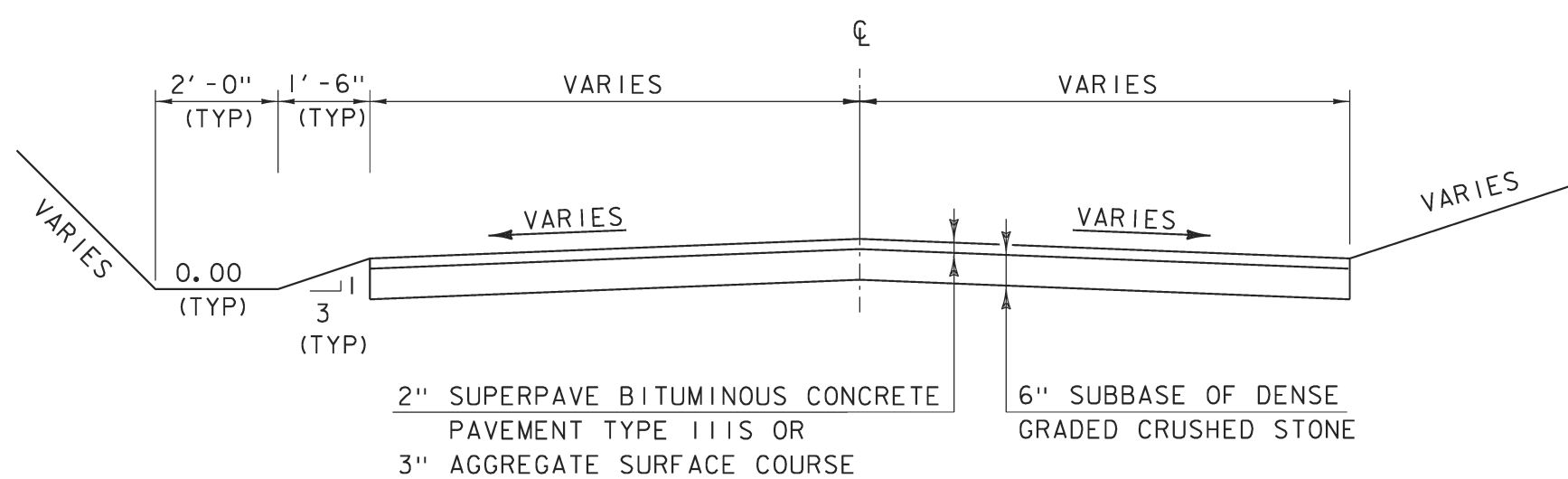
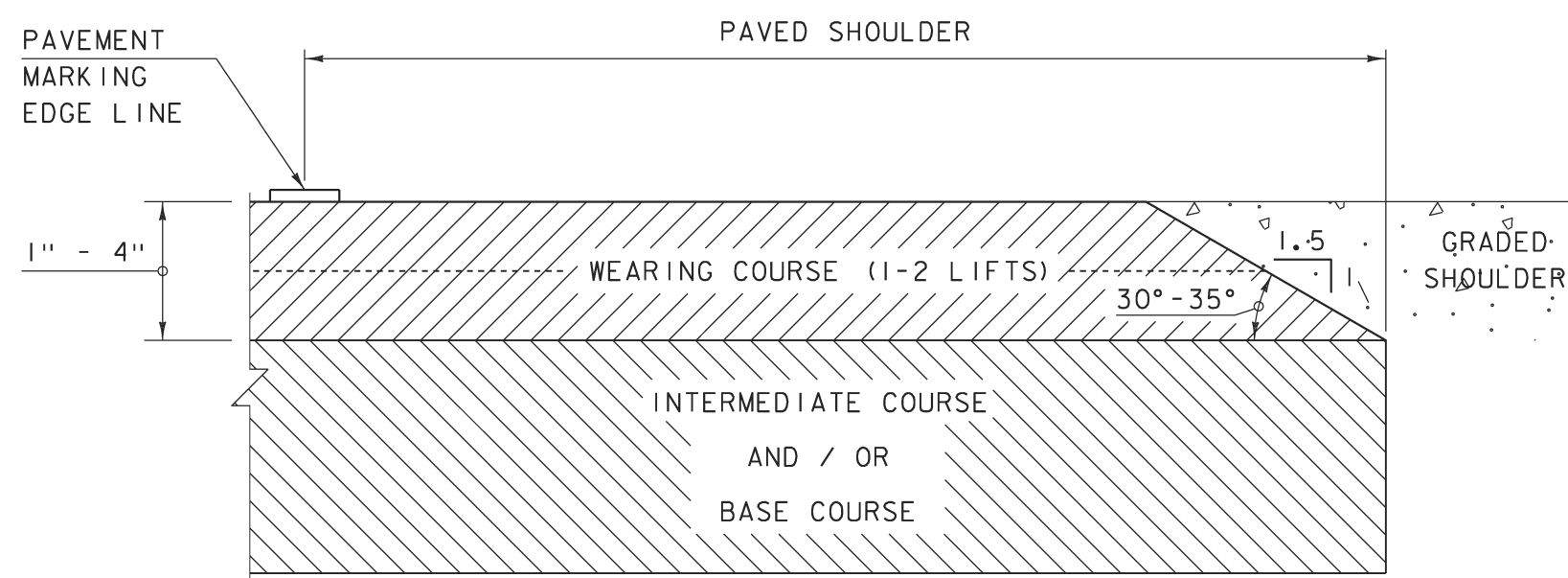


MANUFACTURED TERMINAL SECTION, TANGENT DETAIL
SCALE 1/2" = 1'-0"

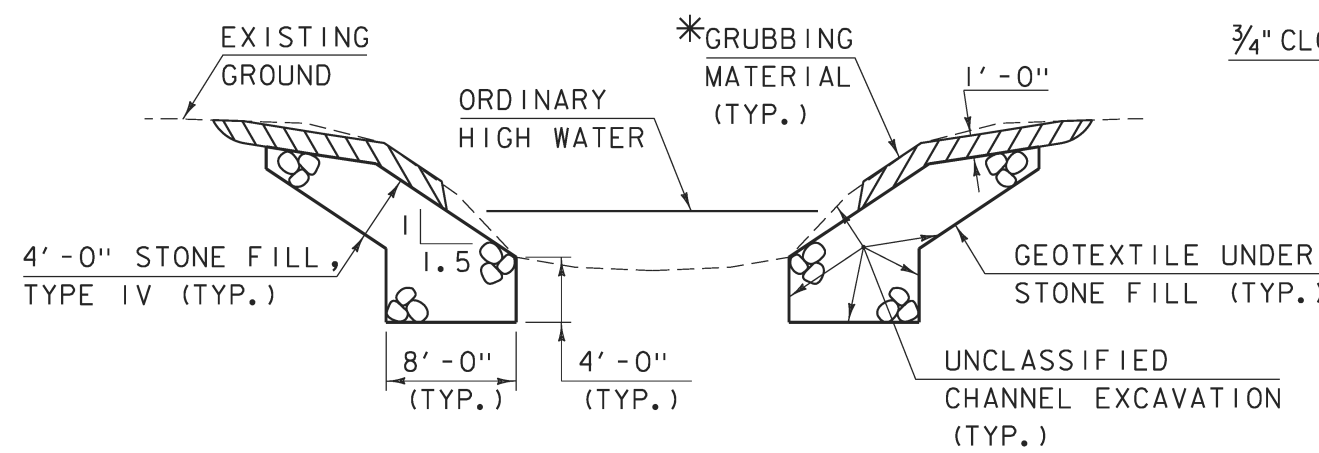


SIDE ROAD TYPICAL SECTION
SCALE 1/2" = 1'-0"



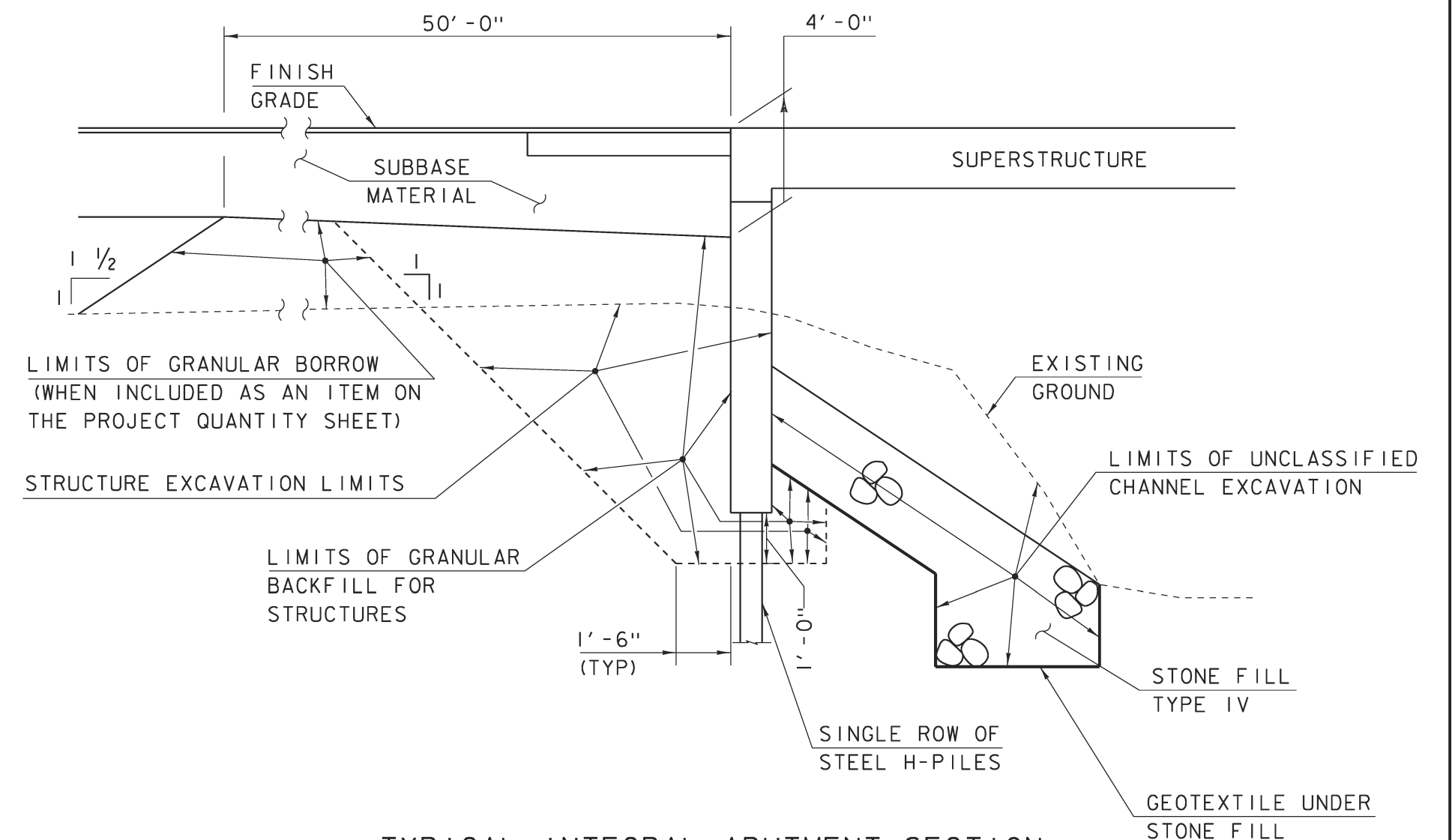
SAFETY EDGE DETAIL
NOT TO SCALE

NOTE: LEVELING COURSE MAY INCLUDE THE "SAFETY EDGE" AT THE CONTRACTOR'S CHOICE.



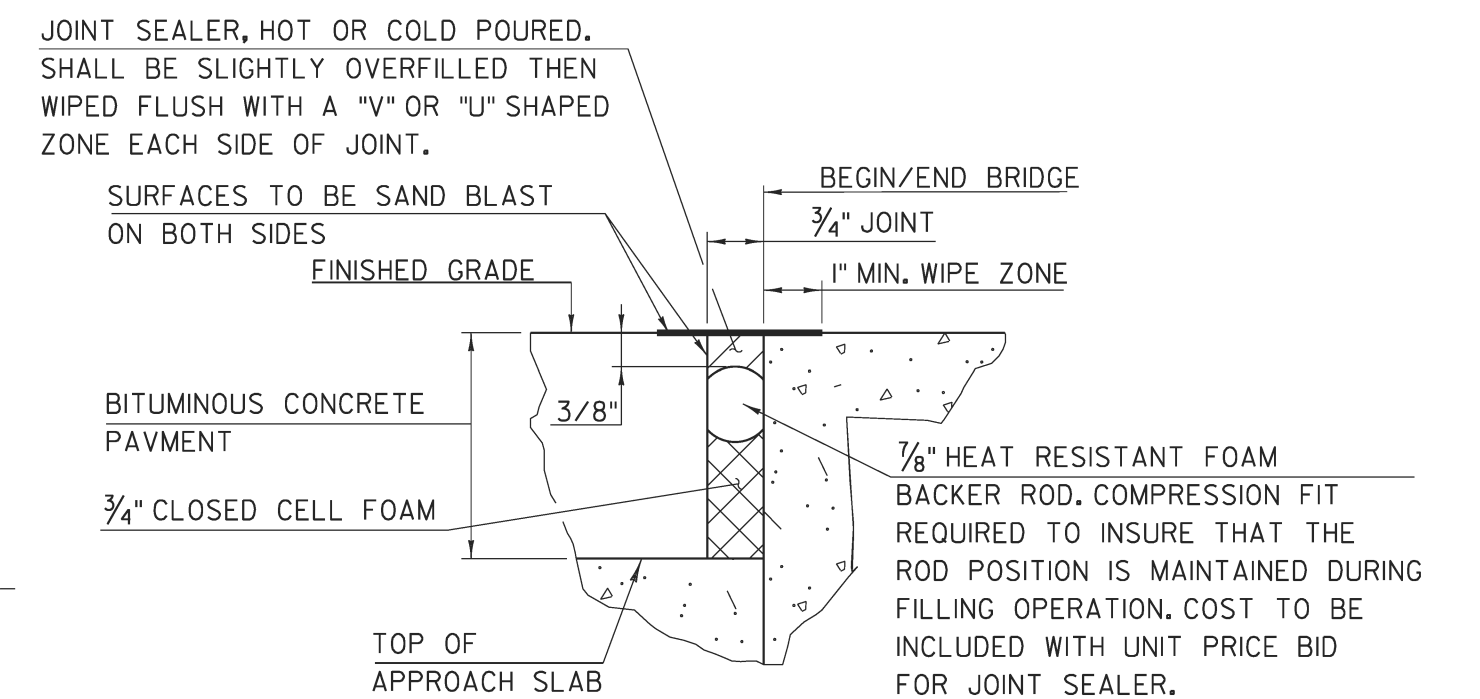
TYPICAL CHANNEL SECTION
(NOT TO SCALE)

*GRUBBING MATERIAL SHALL NOT BE PLACED ON THE STONE FILL IN THE AREA UNDER THE BRIDGE. WHENEVER CHANNEL SLOPE INTERSECTS ROADWAY SUBBASE, GRUBBING MATERIAL SHALL BEGIN AT THE BOTTOM OF SUBBASE.



TYPICAL INTEGRAL ABUTMENT SECTION
NOT TO SCALE

ACTUAL LIMITS OF STRUCTURE EXCAVATION SHALL BE DETERMINED BY THE CONTRACTOR. HOWEVER, ONLY THE EXCAVATION BETWEEN THE LIMITS SHOWN WILL BE PAID FOR UNDER THE ITEM 204.25 "STRUCTURE EXCAVATION". EXCAVATION BY THE CONTRACTOR OUTSIDE OF THESE LIMITS WILL BE AT THE EXPENSE OF THE CONTRACTOR.



PROJECT NAME: BRISTOL
PROJECT NUMBER: BRO 1445(32)

FILE NAME: s05j352typ.dgn
PROJECT LEADER: J. LACROIX
DESIGNED BY: G. LAROCHE
TYPICAL SECTIONS SHEET #2

PLOT DATE: 06-MAR-2013
DRAWN BY: R. PELLETT
CHECKED BY: T. FILLBACH
SHEET 6 OF 19