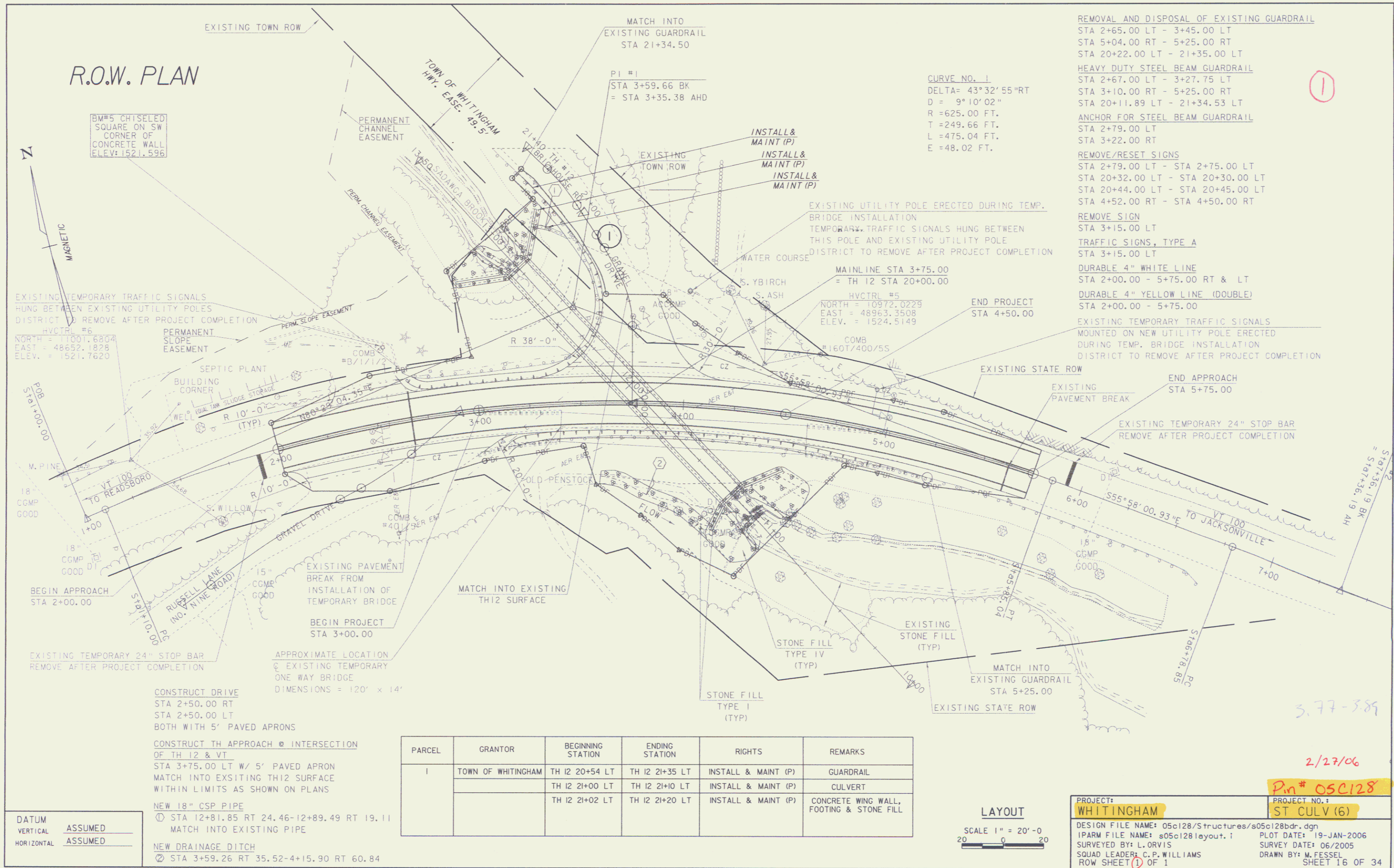


R.O.W. PLAN



BM#5 CHISELED SQUARE ON SW CORNER OF CONCRETE WALL ELEV: 1521.596

EXISTING TEMPORARY TRAFFIC SIGNALS HUNG BETWEEN EXISTING UTILITY POLES DISTRICT TO REMOVE AFTER PROJECT COMPLETION
 HVCTRL #6
 NORTH = 11001.6804
 EAST = 48652.1828
 ELEV. = 1521.7620

SEPTIC PLANT BUILDING CORNER
 WELLS FOR FAN SLUDGE STORAGE
 R 10'-0" (TYP)
 R 10'-0"
 R 10'-0"

TO READSBORO
 M. PINE
 18" CGMP GOOD
 18" CGMP GOOD
 18" CGMP GOOD

BEGIN APPROACH STA 2+00.00
 RUSSELL LANE (NO. NINE ROAD)
 15" CGMP GOOD

EXISTING TEMPORARY 24" STOP BAR REMOVE AFTER PROJECT COMPLETION
 APPROXIMATE LOCATION OF EXISTING TEMPORARY ONE WAY BRIDGE DIMENSIONS = 120' x 14'

CONSTRUCT DRIVE STA 2+50.00 RT STA 2+50.00 LT BOTH WITH 5' PAVED APRONS
 CONSTRUCT TH APPROACH @ INTERSECTION OF TH 12 & VT STA 3+75.00 LT W/ 5' PAVED APRON MATCH INTO EXISTING TH12 SURFACE WITHIN LIMITS AS SHOWN ON PLANS

NEW 18" CSP PIPE
 ① STA 12+81.85 RT 24.46-12+89.49 RT 19.11 MATCH INTO EXISTING PIPE
 NEW DRAINAGE DITCH
 ② STA 3+59.26 RT 35.52-4+15.90 RT 60.84

DATUM VERTICAL ASSUMED HORIZONTAL ASSUMED

MATCH INTO EXISTING GUARDRAIL STA 21+34.50
 P1 #1
 STA 3+59.66 BK
 = STA 3+35.38 AHD

CURVE NO. 1
 DELTA= 43°32'55"RT
 D = 9°10'02"
 R = 625.00 FT.
 T = 249.66 FT.
 L = 475.04 FT.
 E = 48.02 FT.

MAINLINE STA 3+75.00 = TH 12 STA 20+00.00
 HVCTRL #5
 NORTH = 10972.0229
 EAST = 48963.3508
 ELEV. = 1524.5149

REMOVAL AND DISPOSAL OF EXISTING GUARDRAIL
 STA 2+65.00 LT - 3+45.00 LT
 STA 5+04.00 RT - 5+25.00 RT
 STA 20+22.00 LT - 21+35.00 LT
 HEAVY DUTY STEEL BEAM GUARDRAIL
 STA 2+67.00 LT - 3+27.75 LT
 STA 3+10.00 RT - 5+25.00 RT
 STA 20+11.89 LT - 21+34.53 LT
 ANCHOR FOR STEEL BEAM GUARDRAIL
 STA 2+79.00 LT
 STA 3+22.00 RT
 REMOVE/RESET SIGNS
 STA 2+79.00 LT - STA 2+75.00 LT
 STA 20+32.00 LT - STA 20+30.00 LT
 STA 20+44.00 LT - STA 20+45.00 LT
 STA 4+52.00 RT - STA 4+50.00 RT
 REMOVE SIGN
 STA 3+15.00 LT
 TRAFFIC SIGNALS, TYPE A
 STA 3+15.00 LT
 DURABLE 4" WHITE LINE
 STA 2+00.00 - 5+75.00 RT & LT
 DURABLE 4" YELLOW LINE (DOUBLE)
 STA 2+00.00 - 5+75.00
 EXISTING TEMPORARY TRAFFIC SIGNALS MOUNTED ON NEW UTILITY POLE ERECTED DURING TEMP. BRIDGE INSTALLATION DISTRICT TO REMOVE AFTER PROJECT COMPLETION

EXISTING STATE ROW
 END APPROACH STA 5+75.00
 EXISTING PAVEMENT BREAK
 EXISTING TEMPORARY 24" STOP BAR REMOVE AFTER PROJECT COMPLETION

PARCEL	GRANTOR	BEGINNING STATION	ENDING STATION	RIGHTS	REMARKS
1	TOWN OF WHITINGHAM	TH 12 20+54 LT	TH 12 21+35 LT	INSTALL & MAINT (P)	GUARDRAIL
		TH 12 21+00 LT	TH 12 21+10 LT	INSTALL & MAINT (P)	CULVERT
		TH 12 21+02 LT	TH 12 21+20 LT	INSTALL & MAINT (P)	CONCRETE WING WALL, FOOTING & STONE FILL

LAYOUT
 SCALE 1" = 20'-0"
 20 0 20

PROJECT: WHITINGHAM
 PROJECT NO.: ST CULV (6)
 DESIGN FILE NAME: 05c128/Structures/s05c128bdr.dgn
 IPARM FILE NAME: s05c128layout.i
 SURVEYED BY: L. ORVIS
 SQUAD LEADER: C.P. WILLIAMS
 ROW SHEET ① OF 1
 PLOT DATE: 19-JAN-2006
 SURVEY DATE: 06/2005
 DRAWN BY: M. FESSEL
 SHEET 16 OF 34

①

5.77-389

2/27/06

Pin# 05C128

JAN 26 2006