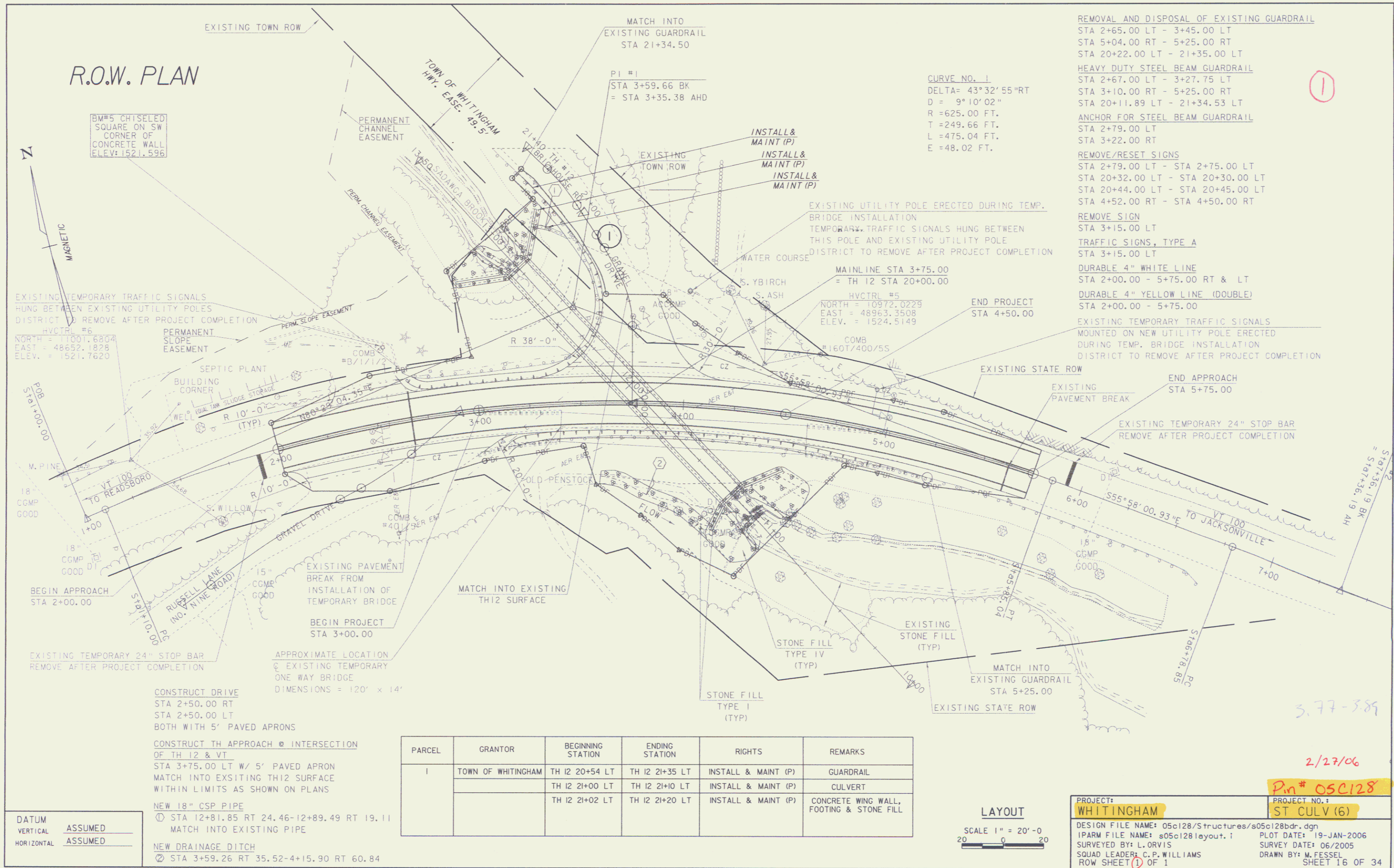


R.O.W. PLAN



BM#5 CHISELED SQUARE ON SW CORNER OF CONCRETE WALL ELEV: 1521.596

EXISTING TEMPORARY TRAFFIC SIGNALS HUNG BETWEEN EXISTING UTILITY POLES DISTRICT TO REMOVE AFTER PROJECT COMPLETION
 HVCTRL #6
 NORTH = 11001.6804
 EAST = 48652.1828
 ELEV. = 1521.7620

SEPTIC PLANT BUILDING CORNER
 PERM. SLOPE EASEMENT
 PERM. CHANNEL EASEMENT
 PERM. CHANNEL EASEMENT
 PERM. CHANNEL EASEMENT

TO READSBORO
 VT 100
 M. PINE
 18" CGMP GOOD
 18" CGMP GOOD
 18" CGMP GOOD
 18" CGMP GOOD

VT 100
 RUSSELL LANE (NO. NINE ROAD)
 15" CGMP GOOD
 15" CGMP GOOD
 15" CGMP GOOD

EXISTING TEMPORARY 24" STOP BAR REMOVE AFTER PROJECT COMPLETION
 BEGIN APPROACH STA 2+00.00
 BEGIN PROJECT STA 3+00.00

EXISTING TEMPORARY 24" STOP BAR REMOVE AFTER PROJECT COMPLETION
 APPROXIMATE LOCATION OF EXISTING TEMPORARY ONE WAY BRIDGE DIMENSIONS = 120' x 14'

CONSTRUCT DRIVE STA 2+50.00 RT STA 2+50.00 LT BOTH WITH 5' PAVED APRONS
 CONSTRUCT TH APPROACH @ INTERSECTION OF TH 12 & VT STA 3+75.00 LT W/ 5' PAVED APRON MATCH INTO EXISTING TH12 SURFACE WITHIN LIMITS AS SHOWN ON PLANS

NEW 18" CSP PIPE
 ① STA 12+81.85 RT 24.46-12+89.49 RT 19.11 MATCH INTO EXISTING PIPE
 NEW DRAINAGE DITCH
 ② STA 3+59.26 RT 35.52-4+15.90 RT 60.84

DATUM VERTICAL ASSUMED HORIZONTAL ASSUMED

MATCH INTO EXISTING GUARDRAIL STA 21+34.50
 P1 #1
 STA 3+59.66 BK
 = STA 3+35.38 AHD

CURVE NO. 1
 DELTA= 43°32'55"RT
 D = 9°10'02"
 R = 625.00 FT.
 T = 249.66 FT.
 L = 475.04 FT.
 E = 48.02 FT.

MAINLINE STA 3+75.00 = TH 12 STA 20+00.00
 HVCTRL #5
 NORTH = 10972.0229
 EAST = 48963.3508
 ELEV. = 1524.5149

REMOVAL AND DISPOSAL OF EXISTING GUARDRAIL
 STA 2+65.00 LT - 3+45.00 LT
 STA 5+04.00 RT - 5+25.00 RT
 STA 20+22.00 LT - 21+35.00 LT
 HEAVY DUTY STEEL BEAM GUARDRAIL
 STA 2+67.00 LT - 3+27.75 LT
 STA 3+10.00 RT - 5+25.00 RT
 STA 20+11.89 LT - 21+34.53 LT
 ANCHOR FOR STEEL BEAM GUARDRAIL
 STA 2+79.00 LT
 STA 3+22.00 RT
 REMOVE/RESET SIGNS
 STA 2+79.00 LT - STA 2+75.00 LT
 STA 20+32.00 LT - STA 20+30.00 LT
 STA 20+44.00 LT - STA 20+45.00 LT
 STA 4+52.00 RT - STA 4+50.00 RT
 REMOVE SIGN
 STA 3+15.00 LT
 TRAFFIC SIGNALS, TYPE A
 STA 3+15.00 LT
 DURABLE 4" WHITE LINE
 STA 2+00.00 - 5+75.00 RT & LT
 DURABLE 4" YELLOW LINE (DOUBLE)
 STA 2+00.00 - 5+75.00
 EXISTING TEMPORARY TRAFFIC SIGNALS MOUNTED ON NEW UTILITY POLE ERECTED DURING TEMP. BRIDGE INSTALLATION DISTRICT TO REMOVE AFTER PROJECT COMPLETION

EXISTING STATE ROW
 END APPROACH STA 5+75.00
 EXISTING PAVEMENT BREAK
 EXISTING TEMPORARY 24" STOP BAR REMOVE AFTER PROJECT COMPLETION

PARCEL	GRANTOR	BEGINNING STATION	ENDING STATION	RIGHTS	REMARKS
1	TOWN OF WHITINGHAM	TH 12 20+54 LT	TH 12 21+35 LT	INSTALL & MAINT (P)	GUARDRAIL
		TH 12 21+00 LT	TH 12 21+10 LT	INSTALL & MAINT (P)	CULVERT
		TH 12 21+02 LT	TH 12 21+20 LT	INSTALL & MAINT (P)	CONCRETE WING WALL, FOOTING & STONE FILL

LAYOUT
 SCALE 1" = 20'-0"
 20 0 20

PROJECT: WHITINGHAM
 PROJECT NO.: ST CULV (6)
 DESIGN FILE NAME: 05c128/Structures/s05c128bdr.dgn
 IPARM FILE NAME: s05c128layout.i
 SURVEYED BY: L. ORVIS
 SQUAD LEADER: C.P. WILLIAMS
 ROW SHEET ① OF 1
 PLOT DATE: 19-JAN-2006
 SURVEY DATE: 06/2005
 DRAWN BY: M. FESSEL
 SHEET 16 OF 34

5.77-389
 2/27/06
 Pin# 05C128

JAN 26 2006