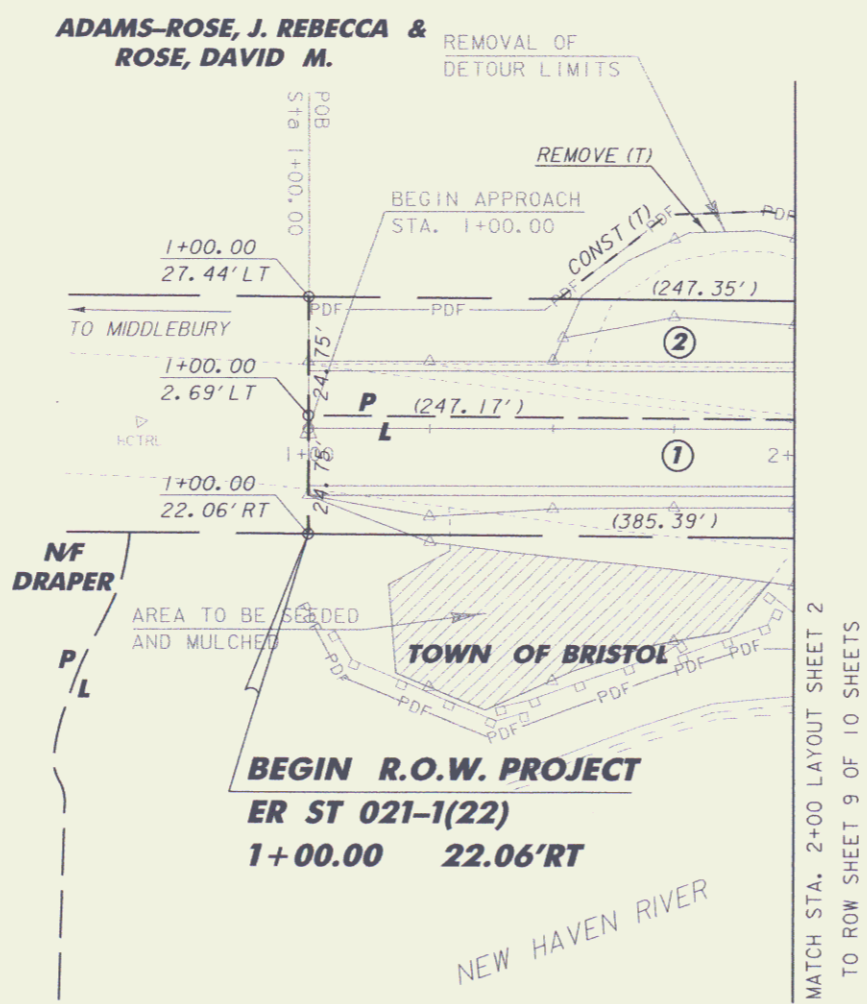


DURABLE 4 INCH WHITE LINE
 STA. 1+00 LT - STA. 2+00 LT
 STA. 1+00 RT - STA. 2+00 RT

DURABLE 4 INCH YELLOW LINE
 STA. 1+00 - STA. 2+00



COLD PLANING, BITUMINOUS PAVEMENT
 STA. 1+00 - STA. 2+00

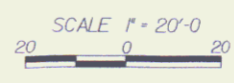


LINES SHOWN ON THIS PLAN AS EXISTING PROPERTY LINES P/L ARE BELIEVED TO BE ACCURATE BUT SHOULD NOT BE RELIED UPON FOR PURPOSES UNRELATED TO THE STATE OF VERMONT'S ACQUISITION OF LAND AND RIGHTS FOR THIS PROJECT.

FOR R.O.W. USE ONLY

ALL DRIVES AS INDICATED ON PLANS ARE SUBJECT TO PERMITS PURSUANT TO TITLE 19 SECTION III, V.S.A

| | |
|------------|-------------|
| DATUM | NAVD 88 |
| VERTICAL | NAVD 88 |
| HORIZONTAL | NAD 83 (96) |



| | |
|--------------------------------------------|----------------------------------|
| LAYOUT SHEET 1 | |
| PROJECT: BRISTOL | PROJECT NO.: ER ST 021-1 (22) |
| DESIGN FILE NAME: 05b126\str\05b126bdr.dgn | PLOT DATE: 20-FEB-2007 |
| IPARM FILE NAME: s05b1261y1.i | CHECKED BY: G. ROKES |
| DESIGNED BY: M. EVANS-MONGEON | DRAWN BY: G. ROKES |
| SQUAD LEADER: M. EVANS-MONGEON | SHEET 8 OF 66 |
| ROW SHEET: 8 OF 10 SHEETS | |

SEP 16 2008

8