

GPS CONTROL POINTS

HVCTRL #1

CGS TRIANGULATION STATION DISC

"BRISTOL 2 1970"

N = 583280.8
E = 1483867.85
ELEV. = 340.27

STATION IS LOCATED ABOUT 0.8 KM (0.5 MILE) WEST OF CENTER OF BRISTOL, IN THE WEST ANGLE OF THE T-INTERS 7/64 CTION OF STATE HIGHWAY 17 AND A MACADAM ROAD RUNNING NORTH, UP ON A LOW CUTBANK, IN SOUTHWEST CORNER OF SCHOOL PLAYGROUND, FORMERLY BRISTOL AIRPORT, TO REACH STATION FROM THE MAIN INTERSECTION IN CENTER OF BRISTOL, GO WEST ON STATE HIGHWAY 17 FOR 0.97 KM (0.6 MILE) TO STATION ON RIGHT, WHERE THE HIGHWAY BEGINS TO CURVE LEFT, DOWNGRADE, STATION MARK IS A STANDARD DISK STAMPED BRISTOL 2 1970, SET IN TOP OF A 0.25 m (10 INCH) DIAMETER, CONCRETE MONUMENT FLUSH WITH THE GROUND, IT IS 21m (69 FEET) NORTHWEST OF CENTER LINE OF HIGHWAY 17, 13.4 m (44 FEET) WEST-NORTHWEST OF CENTER LINE OF MACAOAM SIDE ROAD, 1.4 m (4.5 FEET) NORTH OF POWER POLE 29, 6.64 m (21.8 FEET) NORTH OF A FIRE HYDRANT, AND 0.46 m (1.5 FEET) SOUTHWEST OF A METAL WITNESS POST

HVCTRL #2

STANDARD DISK STAMPED

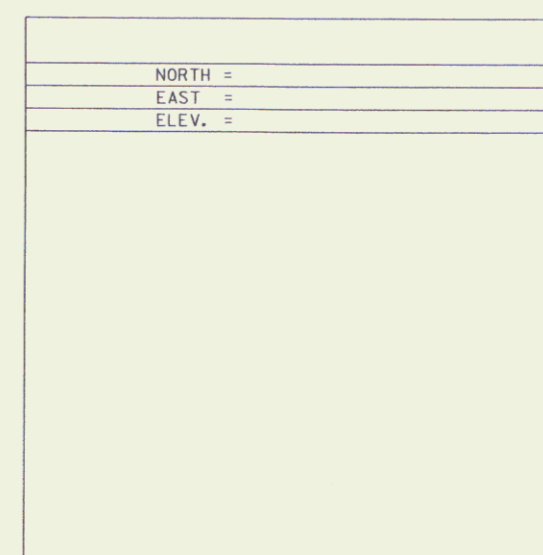
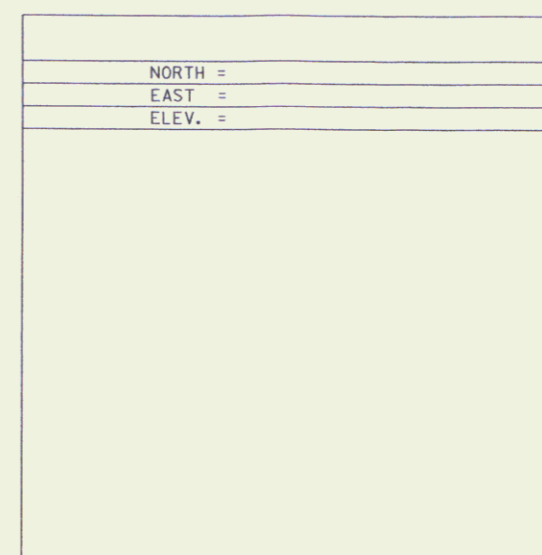
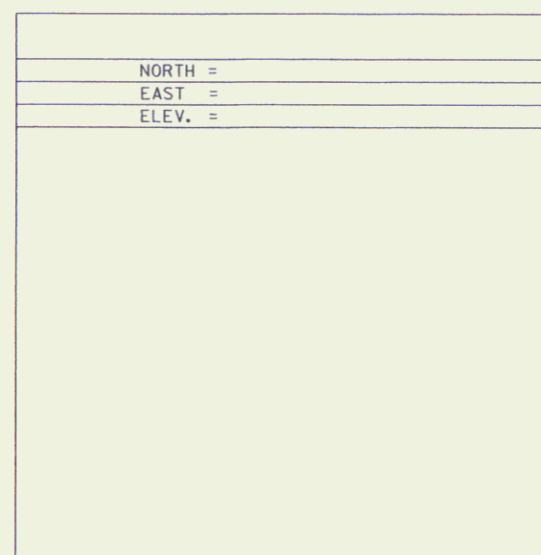
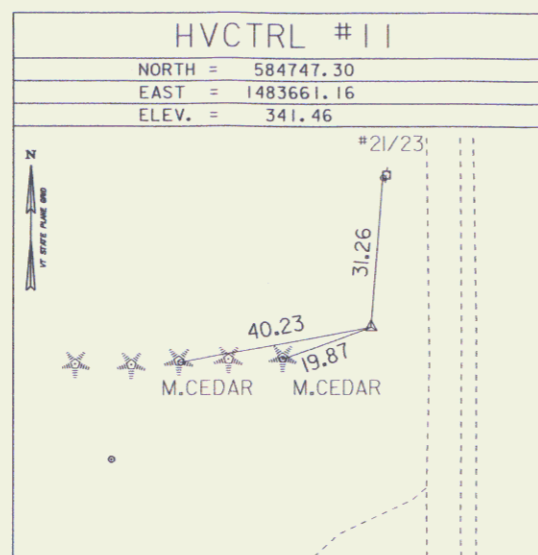
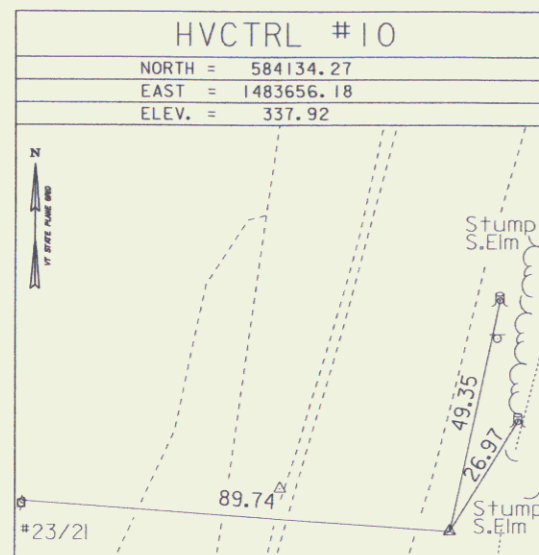
"POWERLINE 1991"

N = 592458.12
E = 1466209.10
ELEV. = 425.52

GENERAL LOCATION, NEW HAVEN, VT. TO REACH FROM THE INTERSECTION OF VT ROUTE 17 EAST AND US ROUTE 7 IN NEW HAVEN JUNCTION, GO EAST ALONG VT ROUTE 17 FOR 1.4 KM (0.9 MILE) TO A POWERLINE CROSSING AND THE MARK ON THE LEFT, THE MARK IS, SET FLUSH WITH GROUND SURFACE IN THE TOP OF A 25 cm (1 FOOT) DIAMETER CONCRETE MONUMENT, IT IS 12.7 m (41.7 FEET) NORTH OF AND ABOUT LEVEL WITH THE CENTERLINE OF VT ROUTE 17, 3.7 m (12.1 FEET) EAST OF POLE NO. 3, 15.3 m (50.2 FEET) WEST OF POLE NO. 303, AND 0.8 m (2.6 FEET) NORTH OF A FIBERGLASS WITNESS POST.

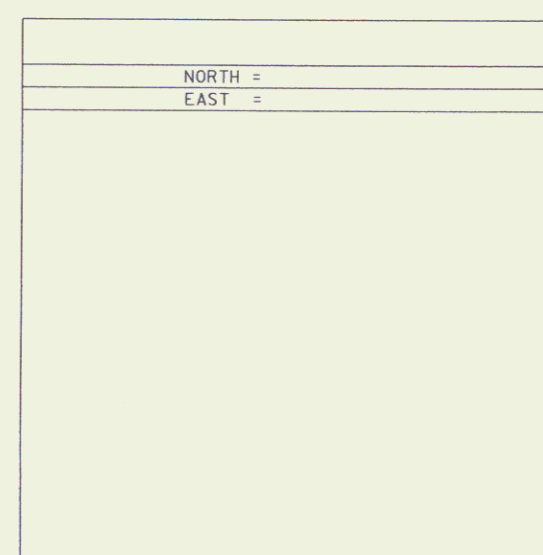
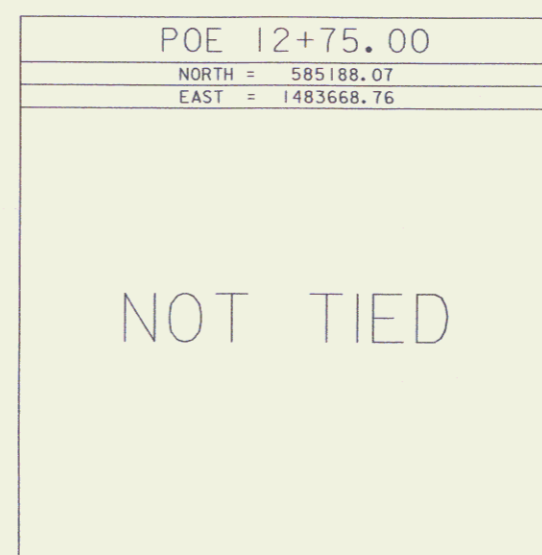
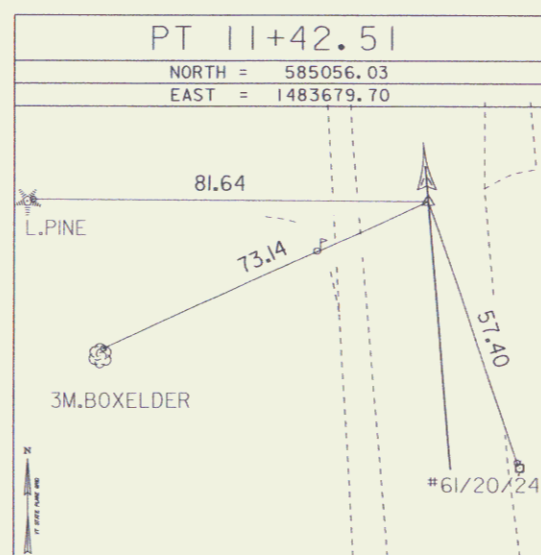
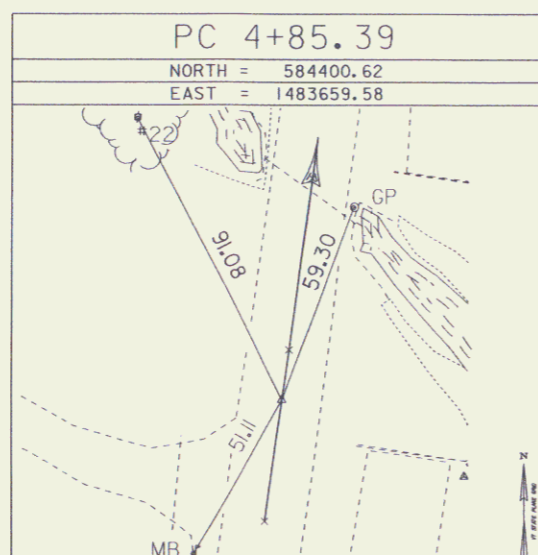
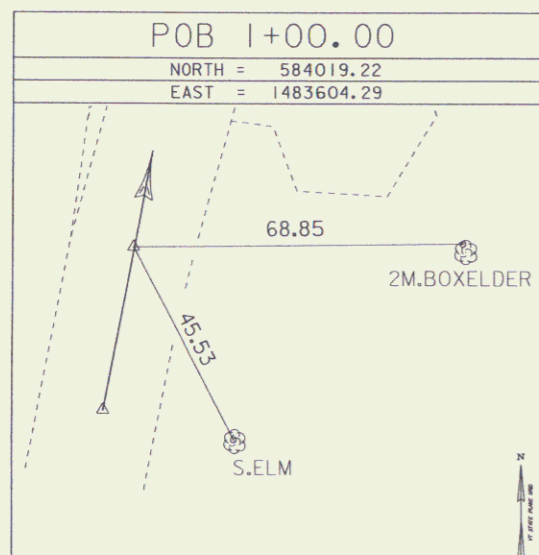
* Description provided by the Vermont Agency of Transportation Geodetic Survey Unit

TRAVERSE TIES



* MAIN TRAVERSE COMPLETED: MAY 10, 1999 BY: CLD Consultant Engineers

ALIGNMENT TIES



* Alignment Staked 11/07/06 by L.Orvis P.C. & G.Hitchcock

DATUM	
VERTICAL	NAVD 88
HORIZONTAL	NAD 83/96
ADJUSTMENT	UNKNOWN

PROJECT NAME:	Bristol	PLOT DATE:	21-DEC-2006
PROJECT NUMBER:	ER ST 021-1(22)	DRAWN BY:	R. Bullock
FILE NAME:	05b126/survey/x05b126+1.dgn	CHECKED BY:	
PROJECT LEADER:		DESIGNED BY:	
			ROW SHEET 6 OF 10 SHEETS

SEP 16 2008

6