

STATE OF VERMONT
AGENCY OF TRANSPORTATION

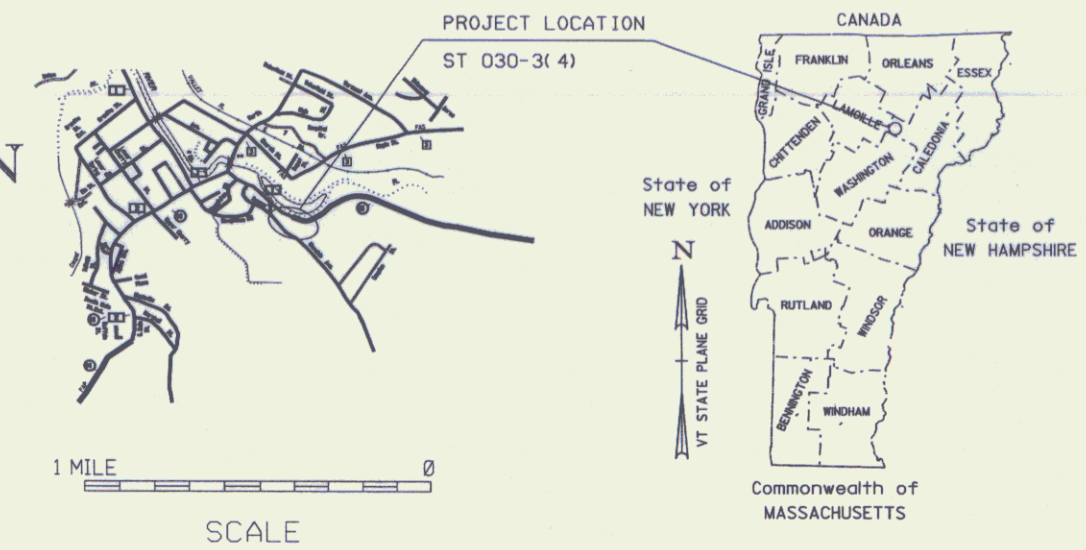


R. O. W. PLANS

PROPOSED IMPROVEMENT
TOWN OF HARDWICK
COUNTY OF CALEDONIA
VT. ROUTE 15 (MINOR ARTERIAL)

BEGINNING AT A POINT ON VT. ROUTE 15, EAST OF THE INTERSECTION OF GLENSIDE AVE. AT MILEMARKER 3.63, IN THE TOWN OF HARDWICK, AND EXTENDING EASTERLY 0.11 MILES TO MILEMARKER 3.74
WORK TO BE PERFORMED UNDER THIS PROJECT INCLUDES MINOR RE-ALIGNMENT OF VT. 15, INSTALLING A COUNTERBERM FOR SLOPE STABILIZATION, DRAINAGE, GUARDRAIL, PAVEMENT AND OTHER RELATED ROADWAY ITEMS.

LENGTH OF ROADWAY 594 FT = 0.11 MI
LENGTH OF PROJECT 594 FT = 0.11 MI
LENGTH OF ROW PROJECT 794.66 FT = 0.15 MI



BEGIN R.O.W. PROJECT

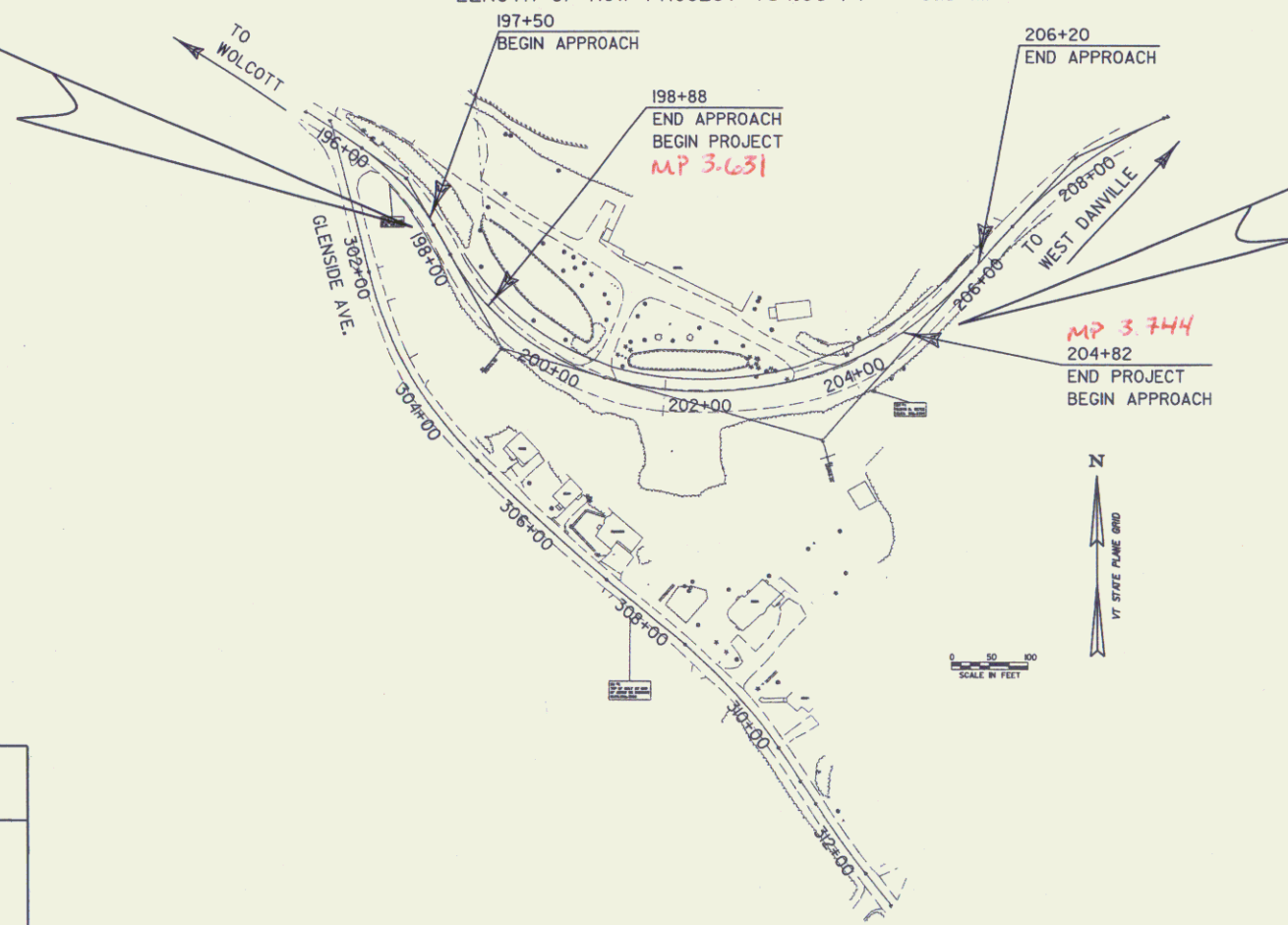
ST 030-3(4)
STA. 197+50.00 24.65' LT.

END R.O.W. PROJECT

ST 030-3(4)
STA. 205+44.66 38.13' LT.

CONVENTIONAL SYMBOLS	
COUNTY LINE	— — — — —
TOWN LINE	— — — — —
LIMITS OF ACCESS	— — — — —
POINT OF ACCESS	X
FENCE LINE	X — X — X — X — X
STONE WALL	— — — — —
TRAVELED WAY	— — — — —
GUARD RAIL	— — — — —
RAILROAD	— — — — —
SURVEY LINE	— — — — —
CULVERT	— — — — —
POWER POLE	⊕
TELEPHONE POLE	⊕
TREES	⊕
CONTROL OF ACCESS	— — — — —
PROPERTY LINE	— — — — —
R.O.W. TAKING LINE	— — — — —
SLOPE RIGHTS	SR
TOP OF CUT	— — — — —
TOE OF SLOPE	— — — — —

SURVEYED BY : R. GILMAN
SURVEYED DATE : DEC. 2004
DATUM
VERTICAL NAVD 88
HORIZONTAL NAD 83 (96)



ALL DRIVES AS INDICATED ON PLANS ARE SUBJECT TO PERMITS PURSUANT TO TITLE 19 SECTION III, V.S.A.

Lines shown on this plan as existing property lines P/L are believed to be accurate but should not be relied upon for purposes unrelated to the State of Vermont's acquisition of land and rights for this project.

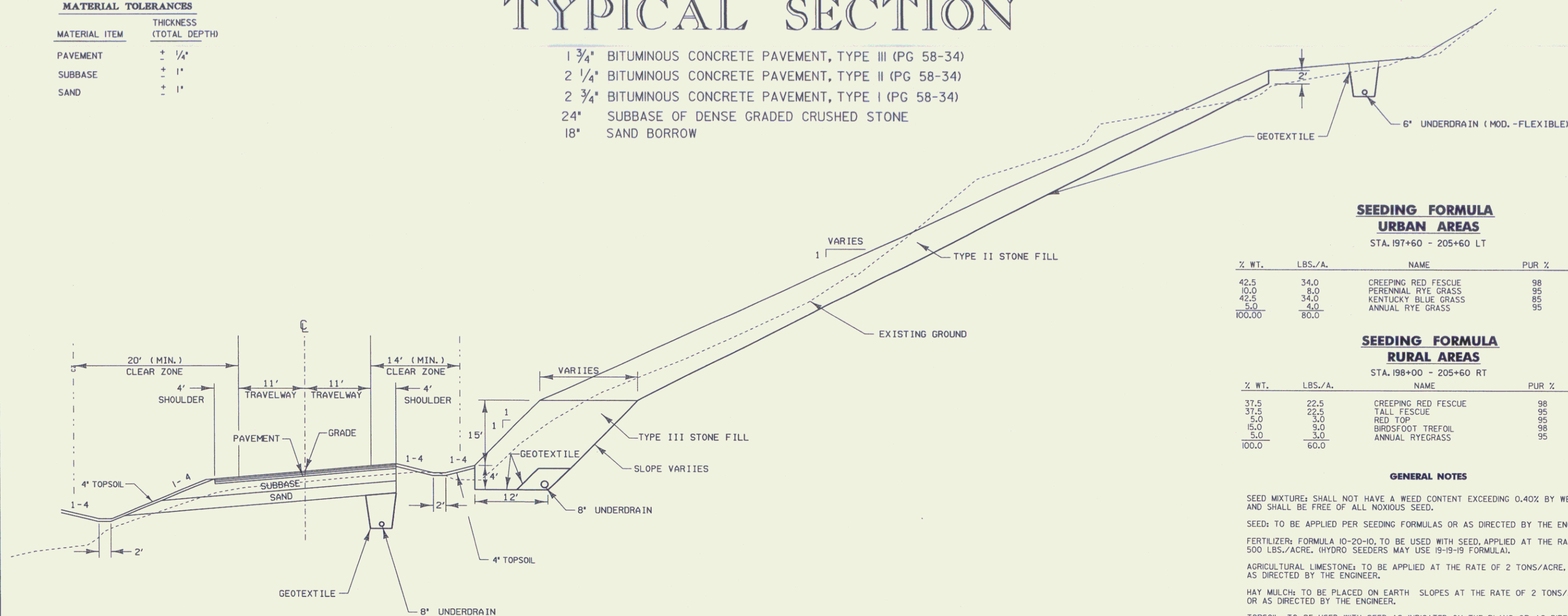
THESE PLANS ARE SUBJECT TO SUCH ENGINEERING CHANGES AS MAY BE REQUIRED BY THE DIRECTOR OF PROGRAM DEVELOPMENT.
CONSTRUCTION IS TO BE CARRIED ON IN ACCORDANCE WITH THESE PLANS AND THE STANDARD SPECIFICATIONS FOR CONSTRUCTION DATED 2001 AS APPROVED BY THE FEDERAL HIGHWAY ADMINISTRATION ON JANUARY 4, 2001 FOR USE ON THIS PROJECT, INCLUDING ALL SUBSEQUENT REVISIONS AND SUCH REVISED SPECIFICATIONS AND SPECIAL PROVISIONS AS ARE INCORPORATED IN THESE PLANS.
FILE NAME: d040a060bdr.dgn
IPARM NAME: d040a0601.t.t.

Pin # CHE060
APPROVED: *Richard J. Edwards* DATE 7/15/05
Director of Program Development
APPROVED: *William J. Moore* DATE 7/15/05
Chief of Right of Way
HARDWICK
ST 030-3(4)
R.O.W. SHEET 1 OF 8 SHEETS

TYPICAL SECTION

MATERIAL TOLERANCES	
MATERIAL ITEM	THICKNESS (TOTAL DEPTH)
PAVEMENT	± 1/4"
SUBBASE	± 1"
SAND	± 1"

- 1 3/4" BITUMINOUS CONCRETE PAVEMENT, TYPE III (PG 58-34)
- 2 1/4" BITUMINOUS CONCRETE PAVEMENT, TYPE II (PG 58-34)
- 2 3/4" BITUMINOUS CONCRETE PAVEMENT, TYPE I (PG 58-34)
- 24" SUBBASE OF DENSE GRADED CRUSHED STONE
- 18" SAND BORROW



SEEDING FORMULA URBAN AREAS

STA. 197+60 - 205+60 LT

% WT.	LBS./A.	NAME	PUR %	GERM %
42.5	34.0	CREeping RED FESCUE	98	85
10.0	8.0	PERENNIAL RYE GRASS	95	90
42.5	34.0	KENTUCKY BLUE GRASS	85	85
5.0	4.0	ANNUAL RYE GRASS	95	85
100.00	80.0			

SEEDING FORMULA RURAL AREAS

STA. 198+00 - 205+60 RT

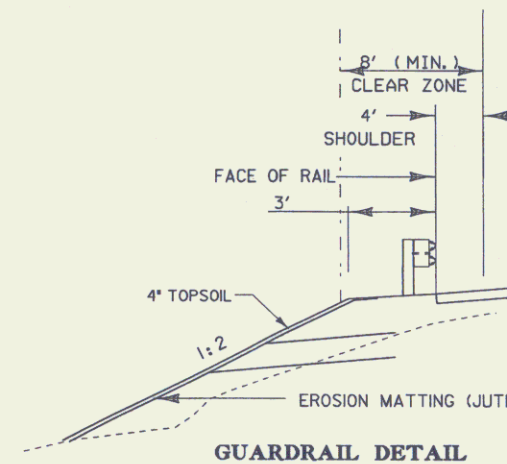
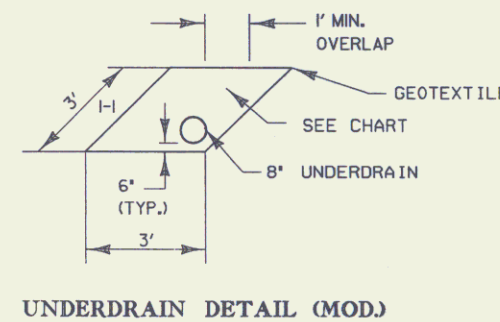
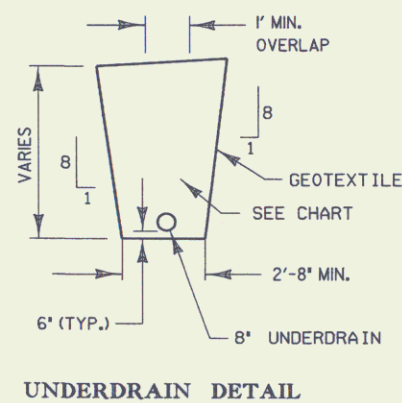
% WT.	LBS./A.	NAME	PUR %	GERM %
37.5	22.5	CREeping RED FESCUE	98	85
37.5	22.5	TALL FESCUE	95	90
5.0	3.0	RED TOP	95	90
15.0	9.0	BIRDFOOT TREFOIL	98	85
5.0	3.0	ANNUAL RYEGRASS	95	85
100.0	60.0			

GENERAL NOTES

- SEED MIXTURE: SHALL NOT HAVE A WEED CONTENT EXCEEDING 0.40% BY WEIGHT AND SHALL BE FREE OF ALL NOXIOUS SEED.
- SEED: TO BE APPLIED PER SEEDING FORMULAS OR AS DIRECTED BY THE ENGINEER.
- FERTILIZER: FORMULA 10-20-10, TO BE USED WITH SEED, APPLIED AT THE RATE OF 500 LBS./ACRE. (HYDRO SEEDERS MAY USE 19-19-19 FORMULA).
- AGRICULTURAL LIMESTONE: TO BE APPLIED AT THE RATE OF 2 TONS/ACRE, OR AS DIRECTED BY THE ENGINEER.
- HAY MULCH: TO BE PLACED ON EARTH SLOPES AT THE RATE OF 2 TONS/ACRE, OR AS DIRECTED BY THE ENGINEER.
- TOPSOIL: TO BE USED WITH SEED AS INDICATED ON THE PLANS, OR AS DIRECTED BY THE ENGINEER.
- MARKER POSTS: TO BE PLACED AS INDICATED OR AS DIRECTED BY THE ENGINEER.
- SLOPE ROUNDING: ALL CUT SLOPES TO BE ROUNDED IN ACCORDANCE WITH STANDARD SHEET B - 5.
- TACK COAT: EMULSIFIED ASPHALT IS TO BE APPLIED AT THE RATE OF 0.015 GAL/SY BETWEEN SUCCESSIVE COURSES OF PAVEMENT OR AS DIRECTED BY THE ENGINEER.

MAXIMUM 0.080 BANKED SECTION

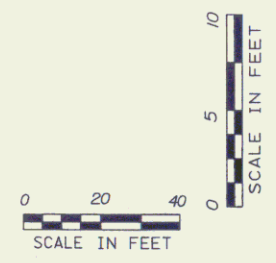
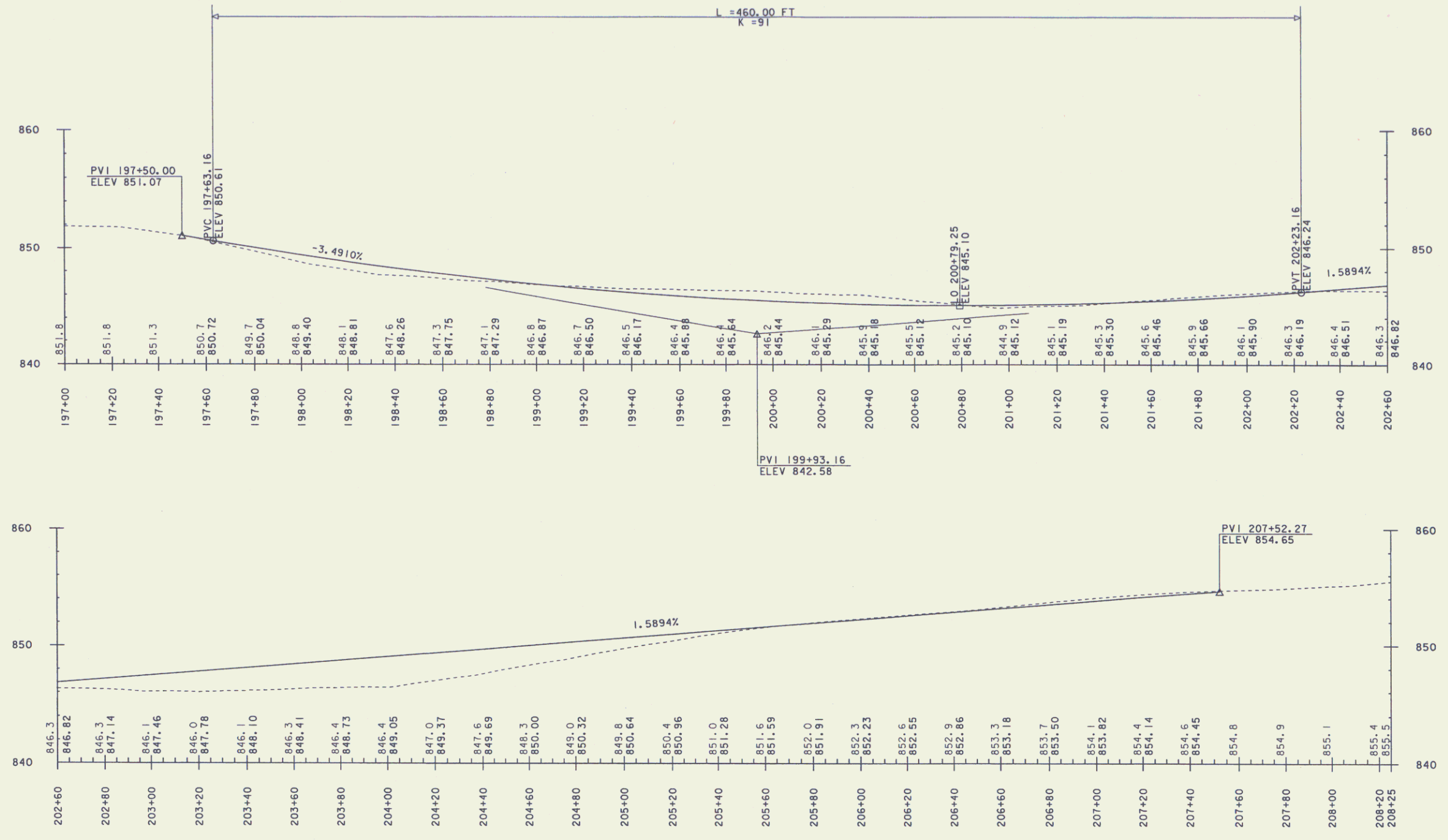
CHART FOR UNDERDRAIN BACKFILL	
BACKFILL FOR 6" AND 8" UNDERDRAIN, SHALL MEET THE FOLLOWING GRADATION REQUIREMENTS:	
SIEVE SIZE	PERCENT BY WT. PASSING THE SQUARE MESH SIEVES
1.5"	100
1.0"	95-100
0.5"	60-80
NO. 4	40-55
NO. 8	5-25
NO. 16	0-12
NO. 50	0-5



N.T.S.

PROJECT NAME: HARDWICK	PLOT DATE: 31-MAY-2005
PROJECT NUMBER: ST 030-3(4)	DRAWN BY: M. NUTTER
FILE NAME: d04e060frm.dgn	CHECKED BY: A. BOMBARDIER
PROJECT LEADER: A. BOMBARDIER	ROW SHEET 2 OF 8 SHEETS
DESIGNED BY: M. NUTTER	
IPARM NAME: d04e060+yp.1	

MAIN LINE PROFILE



PROJECT NAME: HARDWICK	PLOT DATE: 17-MAY-2005
PROJECT NUMBER: ST 030-3(4)	DRAWN BY: M. NUTTER
FILE NAME: d04e060xslx.dgn	CHECKED BY: A. BOMBARDIER
PROJECT LEADER: A. BOMBARDIER	ROW SHEET 3 OF 8 SHEETS
DESIGNED BY: M. NUTTER	
IPARM NAME: de060p.dgn	

DELINEATORS W/ STEEL POSTS

199+00	LT	&	RT	2
200+00	LT	&	RT	2
201+00	LT	&	RT	2
202+00	LT	&	RT	2
203+00	LT	&	RT	2
204+00	LT	&	RT	2
205+00	LT	&	RT	2

14 EA

REMOVE AND RESETTING LIGHT POLE (MOD. - FLAG POLE)
200+33 - 200+49 LT (3 EA)

CONSTRUCT DRIVE
200+60 LT 24' PAVED
YIELDING MARKER POSTS
10 EA

STEEL BEAM GUARDRAIL
203+00 - 206+25 LT 325'
80 214.5
ANCHOR FOR STEEL BEAM GUARDRAIL
1 EA
REMOVAL AND DISPOSAL OF GUARDRAIL
205+60 - 206+25 LT
60

STONE FILL, TYPE SLOPE STABILIZATION
200+60 - 203+20
STONE FILL, TYPE SLOPE STABILIZATION
200+60 - 203+20
REMOVAL AND DISPOSAL OF GUIDE POSTS
206+20 +/- LT
PLUG EXISTING

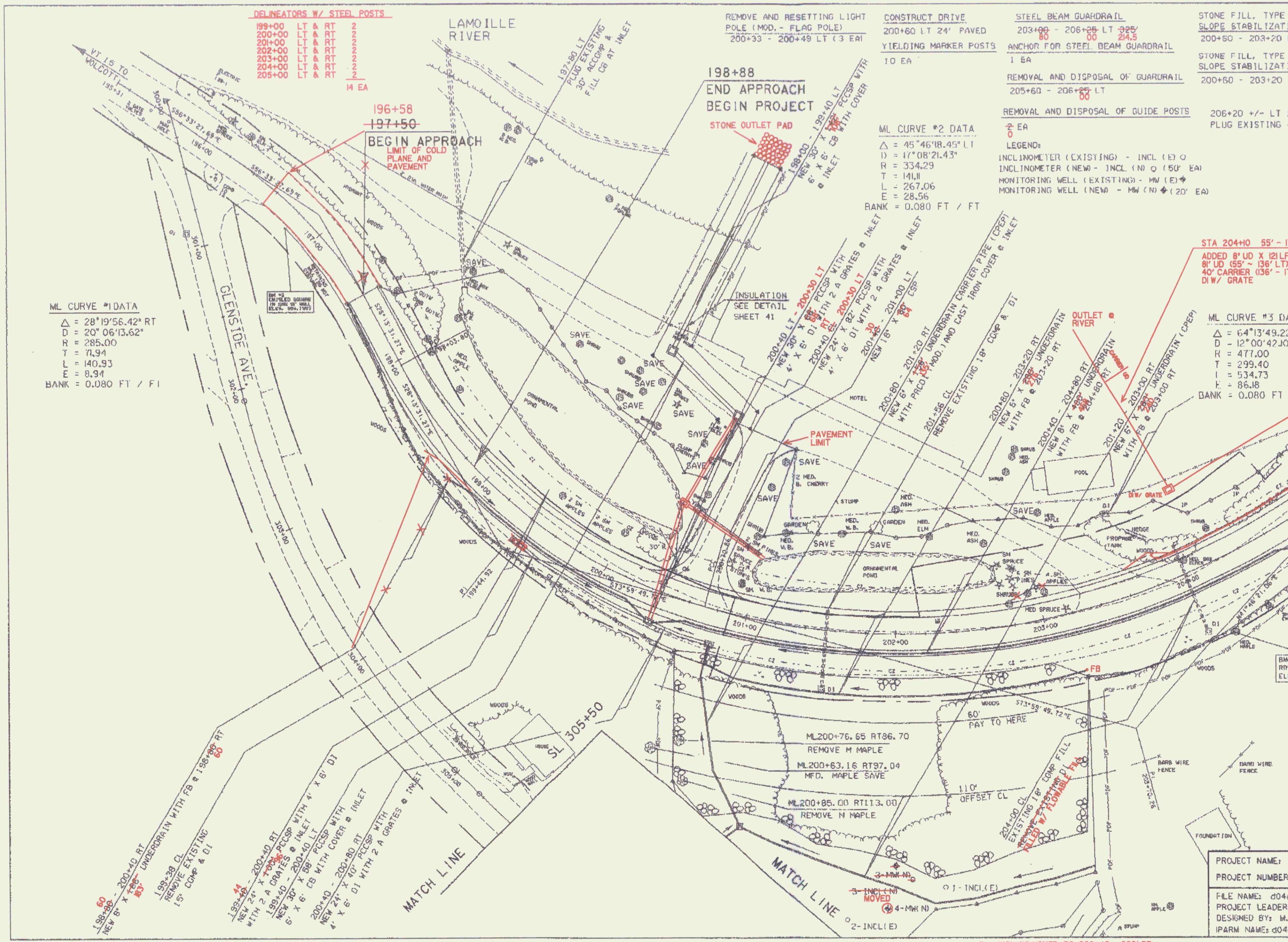
ML CURVE #2 DATA
Δ = 45°46'18.45" LT
D = 17°08'21.43"
R = 334.29
T = 141.11
L = 267.06
E = 28.56
BANK = 0.080 FT / FT

LEGEND:
INCLINOMETER (EXISTING) - INCL (E) ○
INCLINOMETER (NEW) - INCL (N) ○ (50' EA)
MONITORING WELL (EXISTING) - MW (E) ♦
MONITORING WELL (NEW) - MW (N) ♦ (20' EA)

STA 204+00 55' - 1
ADDED 8' UD X 121 LF
8' UD (55' - 136' LT)
40' CARRIER (136' - 1
DI W/ GRATE

ML CURVE #3 DATA
Δ = 64°13'49.2"
D = 12°00'42.10"
R = 477.00
T = 299.40
L = 534.73
E = 86.18
BANK = 0.080 FT

ML CURVE #1 DATA
Δ = 28°19'56.42" RT
D = 20°06'13.62"
R = 285.00
T = 71.94
L = 140.93
E = 8.94
BANK = 0.080 FT / FT



196+58
197+50
BEGIN APPROACH
LIMIT OF COLD PLANE AND PAVEMENT

198+88
END APPROACH
BEGIN PROJECT
STONE OUTLET PAD

200+40 LT - 200+50 LT
NEW 30" X 6" DI WITH 2 A GRATES @ INLET
200+40 RT - 200+50 RT
NEW 24" X 8" DI WITH 2 A GRATES @ INLET
200+40 LT - 201+00 LT
NEW 18" X 8" DI WITH 2 A GRATES @ INLET
200+40 RT - 201+00 RT
NEW 18" X 8" DI WITH 2 A GRATES @ INLET

PAVEMENT LIMIT

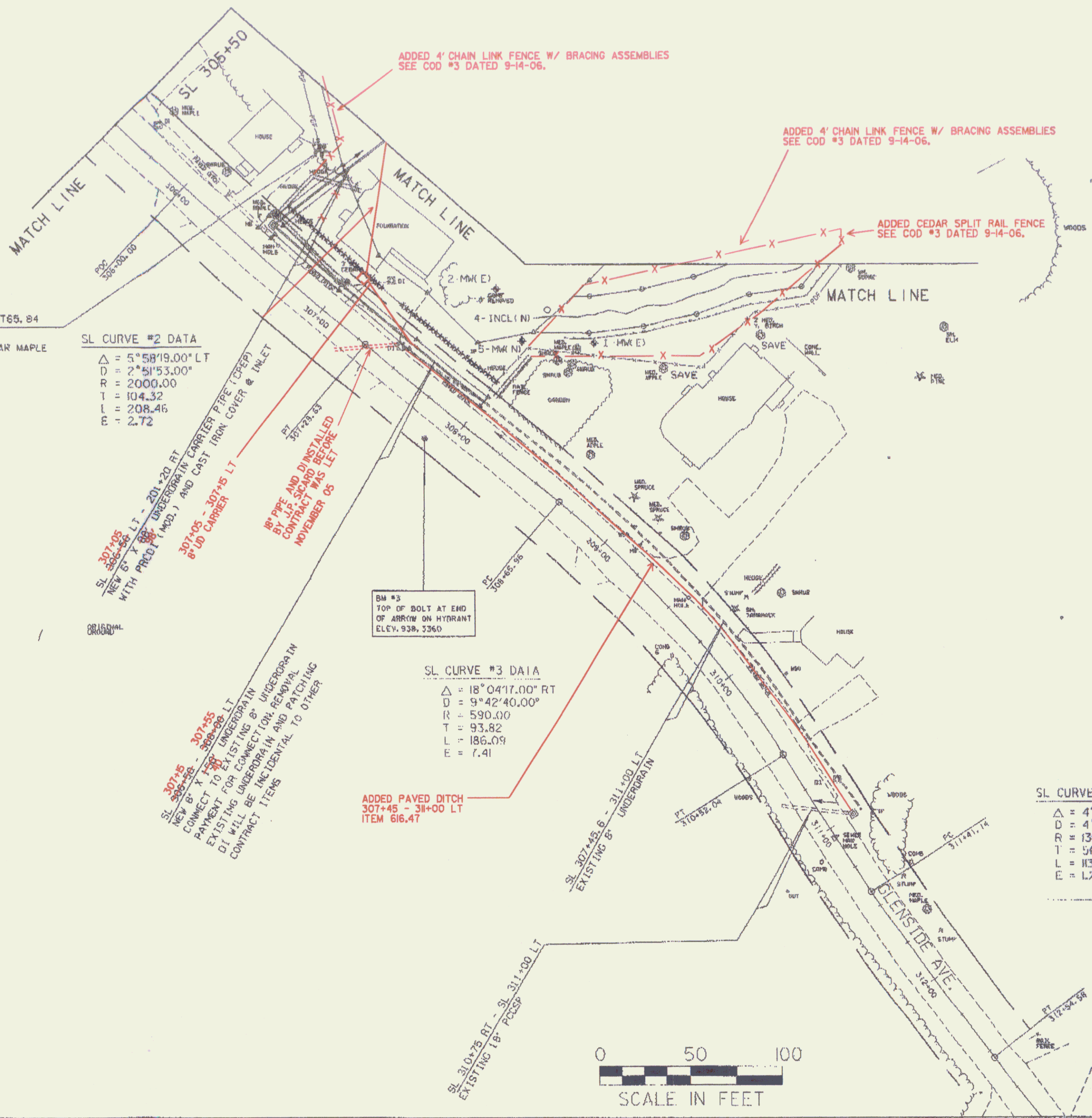
ML 200+76.65 RT 86.70
REMOVE M MAPLE
ML 200+63.16 RT 97.04
MFD. MAPLE SAVE
ML 200+85.00 RT 113.00
REMOVE M MAPLE

204+00 CL
EXISTING 18" CONC FILL
ADDED W/ FLOWABLE FILL

PROJECT NAME:
PROJECT NUMBER:
FILE NAME: 0404
PROJECT LEADER:
DESIGNED BY: M.
IPARM NAME: 0404

3MW ELIMINATED

3 - INCL (N) MOVED TO 202+40 208' RT



SL306+41.43 LT65.84
 REMOVE L.PINE
 PLANT NEW SUGAR MAPLE
 2-2 1/2" CALIPER

SL CURVE #2 DATA
 $\Delta = 5^{\circ}58'19.00''$ LT
 $D = 2^{\circ}51'53.00''$
 $R = 2000.00$
 $T = 104.32$
 $L = 208.46$
 $E = 2.72$

307+05 - 307+15 LT
 NEW 8" X 8" UNDERGRAIN CARRIER PIPE (CPEP) AND CAST IRON COVER & INLET WITH PRELIMINARY
 307+05 - 307+15 LT
 8" UD CARRIER

18" PIPE AND DI INSTALLED
 BY P.P. SICARD BEFORE
 NOVEMBER 05

BM #3
 TOP OF BOLT AT END
 OF ANTIW ON HYDRANT
 ELEV. 938.3360

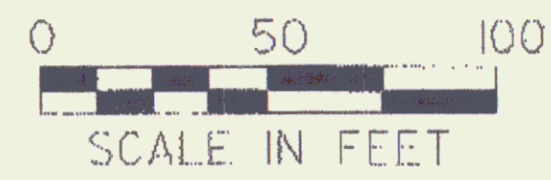
SL CURVE #3 DATA
 $\Delta = 18^{\circ}04'17.00''$ RT
 $D = 9^{\circ}42'40.00''$
 $R = 590.00$
 $T = 93.82$
 $L = 186.09$
 $E = 7.41$

307+55 - 308+00 LT
 NEW 8" X 8" UNDERGRAIN CARRIER PIPE (CPEP) AND CAST IRON COVER & INLET
 CONNECT TO EXISTING 8" UNDERGRAIN CARRIER PIPE (CPEP) AND CAST IRON COVER & INLET
 PAYMENT FOR CONNECTION AND PATCHING
 EXISTING UNDERGRAIN AND PATCHING
 DI WILL BE INCIDENTAL TO OTHER
 CONTRACT ITEMS

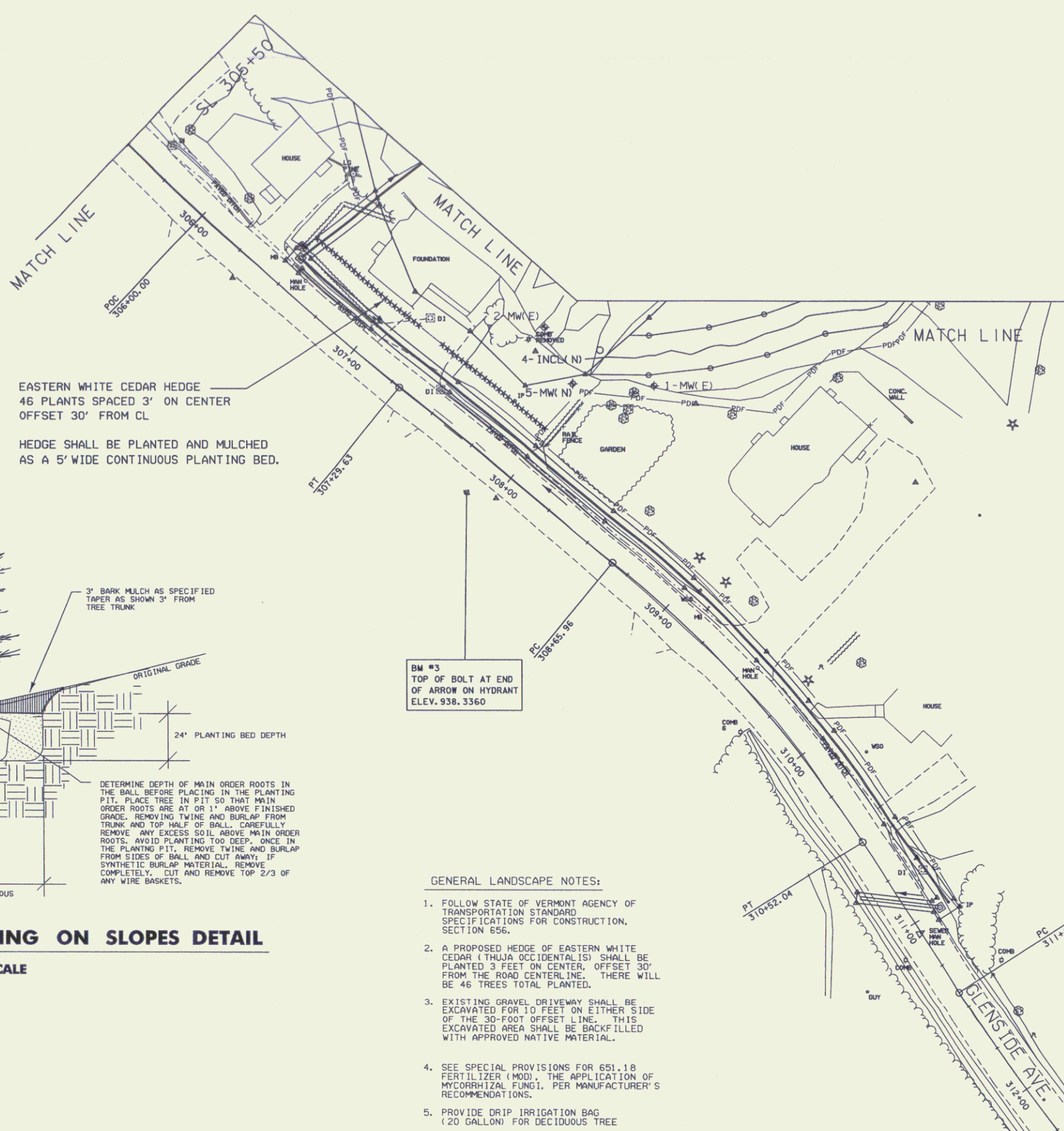
ADDED PAVED DITCH
 307+45 - 311+00 LT
 ITEM 616.47

SL CURVE #4 DATA
 $\Delta = 4^{\circ}59'58.00''$ LT
 $D = 4^{\circ}24'27.00''$
 $R = 1300.00$
 $T = 56.75$
 $L = 113.47$
 $E = 1.24$

YIELDING MARKER
 1 EA
 LEGEND:
 INCL INOMTER (EX)
 INCL INOMTER (NE)
 MONITORING WELL
 MONITORING WELL



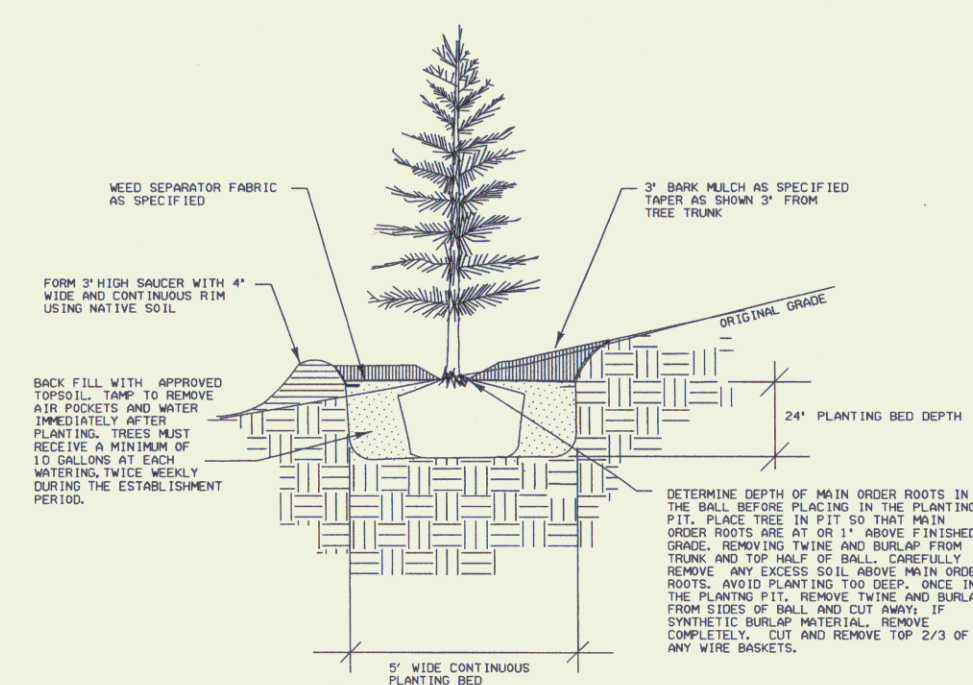
PROJECT
 PROJECT
 FILE NAM
 PROJECT
 DESIGNED
 IPARM NA



EASTERN WHITE CEDAR HEDGE
46 PLANTS SPACED 3' ON CENTER
OFFSET 30' FROM CL

HEDGE SHALL BE PLANTED AND MULCHED
AS A 5' WIDE CONTINUOUS PLANTING BED.

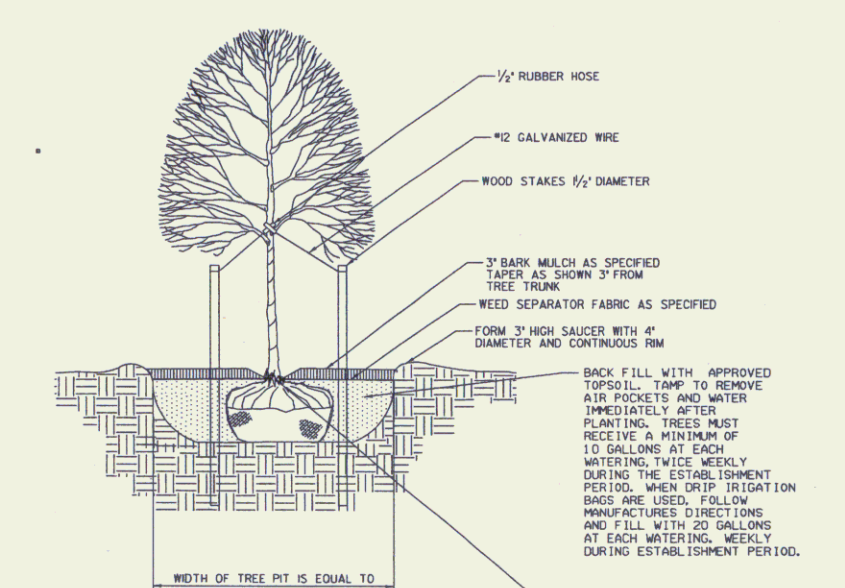
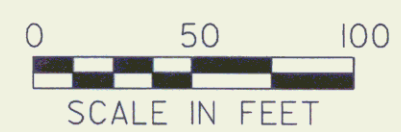
GATE FOR CHAIN-LINK FENCE, 4 FEET
307+19 - 307+31 LT



EVERGREEN TREE PLANTING ON SLOPES DETAIL
NOT TO SCALE

BM #3
TOP OF BOLT AT END
OF ARROW ON HYDRANT
ELEV. 938.3360

- GENERAL LANDSCAPE NOTES:**
1. FOLLOW STATE OF VERMONT AGENCY OF TRANSPORTATION STANDARD SPECIFICATIONS FOR CONSTRUCTION, SECTION 656.
 2. A PROPOSED HEDGE OF EASTERN WHITE CEDAR (THUJA OCCIDENTALIS) SHALL BE PLANTED 3 FEET ON CENTER, OFFSET 30' FROM THE ROAD CENTERLINE. THERE WILL BE 46 TREES TOTAL PLANTED.
 3. EXISTING GRAVEL DRIVEWAY SHALL BE EXCAVATED FOR 10 FEET ON EITHER SIDE OF THE 30-FOOT OFFSET LINE. THIS EXCAVATED AREA SHALL BE BACKFILLED WITH APPROVED NATIVE MATERIAL.
 4. SEE SPECIAL PROVISIONS FOR 651.18 FERTILIZER (MOD), THE APPLICATION OF MYCORRHIZAL FUNGI, PER MANUFACTURER'S RECOMMENDATIONS.
 5. PROVIDE DRIP IRRIGATION BAG (20 GALLON) FOR DECIDUOUS TREE



DECIDUOUS TREE PLANTING DETAIL
NOT TO SCALE

- NOTES:**
1. STAKE ONLY THOSE TREES PLANTED IN WINDY EXPOSED LOCATIONS WHERE THE WIND WILL BE BLOWN OVER OR VANDALIZED AS DETERMINED BY RESIDENT ENGINEER OR LANDSCAPE ARCHITECT.
 2. COMPLETELY REMOVE ALL CUT WIRE, RUBBER HOSE, AND STAKES ONE YEAR AFTER PLANTING.

PROJECT NAME:	HARDWICK
PROJECT NUMBER:	ST 030-3(4)
FILE NAME:	d04e060bdr.dgn
PROJECT LEADER:	A. BOMBARDIER
DESIGNED BY:	M. NUTTER
PLOT DATE:	15-JUL-2005
DRAWN BY:	M. NUTTER
CHECKED BY:	A. BOMBARDIER
ROW SHEET	5A OF 8



RIGHT - OF - WAY DETAIL SHEET

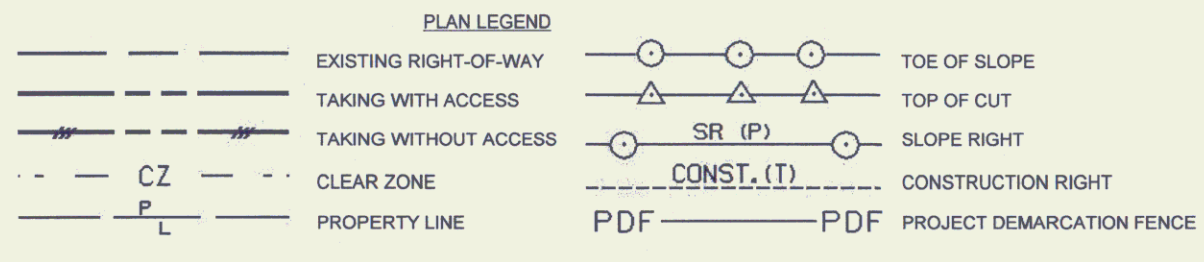
TABLE OF PROPERTY ACQUISITION

PARCEL NO.	PROPERTY OWNER	SHEET NO.	BEGINNING STATION	ENDING STATION	TAKE AREA±	REMAINDER AREA±	RIGHT			RECORDING DATA				REMARKS		
							TYPE	(T)(P)	AREA ±	TITLE	DATE	TOWN / CITY	BOOK		PAGE	
1	STATE OF VERMONT	7,8	201+60.17 RT.	203+70.47 RT.	1.00 A	0.00 A								FORMERLY WIGGINS, DAVID		
2	Z CORP	7	197+50.00 LT. 199+41.40 LT. 197+51.33 LT. 197+61.54 LT. 197+80.00 LT. 198+43.28 LT. 199+08.01 LT. 200+32.70 LT. 200+44.50 LT. 200+40.00 LT. 200+60.00 LT. 201+04.10 LT. 200+78.00 LT. 203+50.00 LT. 203+63.00 LT. 203+80.00 LT. 204+81.04 LT. 206+20.00 LT±	202+17.38 LT. 200+43.90 LT. 197+72.51 LT. 200+48.92 LT. 198+91.31 LT. 199+64.96 LT. 200+48.24 LT. 201+00.00 LT. 205+44.66 LT. 204.08.15 LT. 205+23.96 LT.	0.14 A										CULVERT & DRAINAGE (P) INSTALL (T) SLOPE (T) 0.35 A INSTALL (T) INSTALL (T) INSTALL (T) REMOVE & RESET (T) REMOVE (T) CULVERT (T) DRIVE (T) CONST. (T) 0.11 A SLOPE (T) 0.17 A REMOVE (T) REMOVE (T) REMOVE & RESET (T) SLOPE (P) 179.2 SF INSTALL (T)	HARDWICK INCLUDES MANHOLES & DROP INLET PDF PLUG 30" CULVERT & DROP INLET MOD. PDF 3 FLAG POLES 24' PAVED MM 0366 INCLUDES PDF DRIVE OLD DI PROPANE GAS TANK PLUG 4" STEEL PIPE
3	McLEAN, SUSAN G.	7,8	200+60.00 RT. 200+60.00 RT. 200+80.00 RT. TH 332 306+41.43 LT. TH 332 306+41.43 LT.	TH 332 306+47.15 LT. TH 332 306+47.15 LT. TH 332 306+47.15 LT.											INSTALL (T) 1198.0 SF WDOE 09/19/05 HARDWICK 123 39 PDF 5,663 SF± SLOPE (P) 0.13 A CULVERT (P) LANDSCAPE (T) REMOVE (T) PLANT SUGAR MAPLE TREE LARGE PINE	
3A	McLEAN ESTATE	7A,8A	TH 332 306+12.09 LT.	TH 332 306+46.01 LT.											INSTALL & MAINTAIN (P) WDOE 04/11/07 HARDWICK 128 32 CHAIN LINK FENCE	
4	HOLMES, SUSAN L. & TODD W.	7,8	TH 332 307+98.69 LT. TH 332 307+98.69 LT. TH 332 307+98.69 LT. TH 332 307+98.69 LT. TH 332 308+25.74 LT. 203+31.50 RT.	203+13.26 RT. 203+00.00 RT. 203+00.00 RT. 203+20.77 RT. 203+20.77 RT. 205+20.00 RT.											SLOPE (P) 0.11 A WDOE 09/19/05 HARDWICK 123 40 CULVERT (P) SLOPE (T) 3218.05F CONST. (T) 0.18 A INSTALL (P) CONST. (T) 1174.0 SF INCLUDES EROSION CONTROL & PDF MONITORING WELL INCLUDES PDF	
4A		7A,8A	TH332 308+01.21 LT. TH332 308+04.44 LT. TH332 308+00.83 LT. TH332 308+41.55 LT.	202+98.51 RT. 203+17.34 RT. 203+17.34 RT.											SLOPE (P) .22A INSTALL & MAINTAIN (P) INSTALL (T) INSTALL & MAINTAIN (P) INCLUDES STONE FILL CHAIN LINK FENCE CEDAR SPLIT RAIL FENCE INCLINOMETER	
5A	TOWN OF HARDWICK	7	197+20.00 LT. 198+20.00 LT. 198+80.00 RT. 199+38.00 CL 199+40.00 CL 199+40.00 RT. 199+40.00 LT. 199+40.00 LT. 200+80.00 RT.	200+88.46 CL 199+40.00 LT. 199+40.00 RT. 200+80.00 RT. 200+88.46 RT. 200+30.00 LT. 200+88.46 RT.											CONST. (T) 0.42 A WDOE 09/19/05 HARDWICK 123 41 18,526 SF± CULVERT (P) CULVERT (P) REMOVE (T) CULVERT (P) CULVERT (P) CULVERT (P) CULVERT (P) CULVERTS (P) UNDERDRAIN UNDERDRAIN UNDERDRAIN CULVERT & DROP INLET INCLUDES DROP INLET INCLUDES DROP INLET UNDERDRAIN UNDERDRAIN UNDERDRAINS	
5B		8	TH 332 306+34.63 CL TH 332 307+98.69 LT. TH 332 310+75.00 LT. TH 332 310+79.60 LT.	TH 332 306+46.85 CL TH 332 311+00.00 LT. TH 332 311+00.00 LT.											CONST. (T) 302 SF CULVERT (P) CULVERT (T) REMOVE (T) UNDERDRAIN DROP INLET	
6	ANDRUS, AARON	8	TH 332 309+84.63 LT.	TH 332 309+95.34 LT.											ALL R.T. & I. SIDEWALK	
7	TOWN OF HARDWICK (WATER, SEWER, POWER)														UTILITY	
8	VERIZON NEW ENGLAND, INC.														UTILITY	
9	ADELPHIA CABLE COMMUNICATIONS														UTILITY	

TABLE OF REVISIONS

REVISION NO.	SHEET NO.	DESCRIPTION	DATE
1	6	PARCEL NO. 4 HOLMES. DELETE RIGHT TO REMOVE TREE AT STA. 308+20.70 LT. PER C.O. 9433. MADE BY: MR APPROVED BY: RD	08/03/05
2	6,7	PARCEL NO. 2 Z CORP. EXTEND THE LIMITS OF THE CONST. (T) AT STA. 197+50 LT. - 200+49.92 LT. TO THE RIVERS EDGE. CHANGE AREA FROM 0.29A± TO 0.32A± PER C.O. 9434. MADE BY: MR APPROVED BY: RD	08/11/05
3	6,8	PARCEL NO. 6 ALASKA SEABOARD PARTNERS. CHANGE OWNER TO ANDRUS, AARON. PER C.O. 9435.	08/11/05
4	6,7	PARCEL NO. 2 Z CORP. REMOVE UNDERDRAIN IN POND AREA. RELOCATE 30" CULVERT. REMOVE THE FOLLOWING RIGHTS: CUL. & DR. (P) AT STA. 197+50.00 LT. - 199+40.00 LT.; CONST. (T) AT STA. 197+51.33 LT. - 200+49.92 LT.; CUL. (P) AT STA. 199+00.00 LT. - 199+40.00 LT.; CUL. (P) AT STA. 199+40.00 LT. - 202+14.00 LT.; CUL. (P) AT STA. 199+40.00 LT.; CUL. (P) AT STA. 203+05.00 LT. - 203+40.00 LT. ADD THE FOLLOWING RIGHTS: CUL. & DR. (P) AT STA. 198+41.40 LT. - 200+43.90 LT., INCLUDES MANHOLES & DI INSTALL (T) AT STA. 197+51.33 LT. - 197+72.51 LT., PDF REMOVE & RESET (T) AT STA. 200+32.70 LT. - 200+48.24 LT., 3 FLAG POLES INSTALL (T) AT STA. 198+43.28 LT. - 198+91.31 LT., MOD. PDF INSTALL (T) AT STA. 199+08.01 LT. - 199+64.96 LT., PDF PER C.O. 9443 MADE BY: MR APPROVED BY: RD	10/05/05
5	6,7A,8A	PARCEL NO. 4A HOLMES. CREATE NEW PARCEL CONSISTING OF: SLOPE (P) AT TH 332 308+01.21 LT. - 202+98.51 RT.; 0.22A±, INCLUDES STONE FILL INSTALL & MAINTAIN (P) AT TH 332 308+04.44 LT. - 203+17.34 RT., CHAIN LINK FENCE INSTALL (T) AT TH 332 308+00.83 LT. - 203+17.34 RT.; CEDAR SPLIT RAIL FENCE INSTALL & MAINTAIN (P) AT TH 332 308+41.55 LT.; INCLINOMETER PER C.O. 9472 MADE BY: JB APPROVED BY: EP	09/05/06
6	6,7A,8A	PARCEL NO. 3A McLEAN. CREATE NEW PARCEL CONSISTING OF: INSTALL & MAINTAIN (P) AT TH 332 306+12.09 LT. - TH 332 306+46.01 LT., CHAIN LINK FENCE PER C.O. 9473 MADE BY: JB APPROVED BY: EP	09/05/06

PLOT DATE 05/07/07



- EC -EROSION CONTROL
- (P) -PERMANENT
- (T) -TEMPORARY
- DR -DRAINAGE RIGHT
- DIT -DITCHING RIGHT
- CH -CHANNEL RIGHT
- DRIVE -DRIVE RIGHT
- CUL -CULVERT RIGHT
- C&T -CLEARING & TRIMMING RIGHT
- SR -SLOPE RIGHT
- UE -UTILITY EASEMENT

APPROVED: ROGER P. DUMAS DATE: 07-15-05
CHIEF, PLANS & TITLES

PROJECT NAME: **HARDWICK**
PROJECT NUMBER: **STP - ST 030-3(4)**

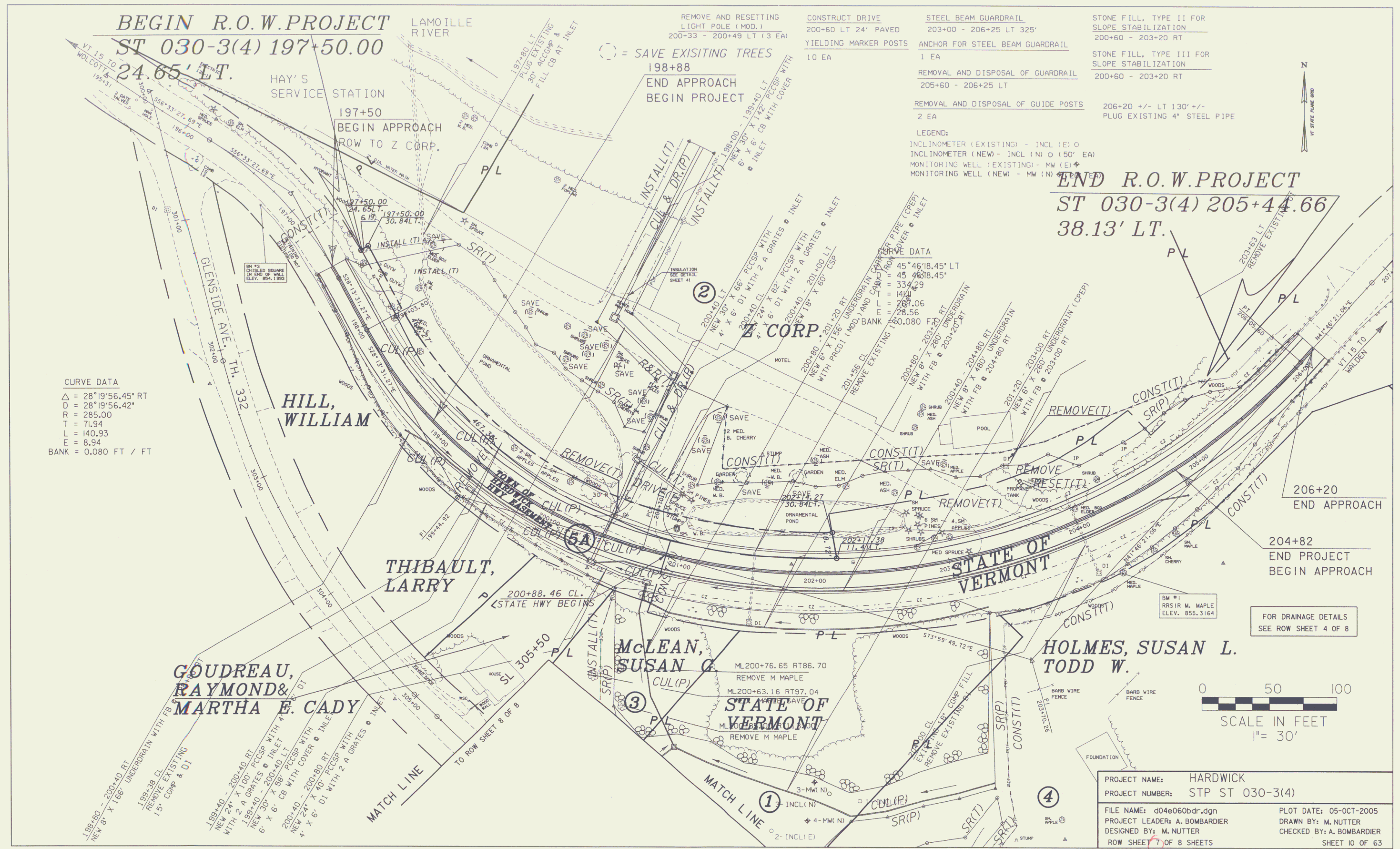
FILE NAME: 04E060DET.XLS PLOT DATE: Date
PROJECT LEADER: BOMBARDIER DRAWN BY: MR
DESIGNED BY: BOMBARDIER CHECKED BY: FM
R.O.W. SHEET 6 OF 8 SHEET 9 OF 63

FOR AS-BUILT
SEE SHEETS 4+5

BEGIN R.O.W. PROJECT
ST 030-3(4) 197+50.00
24.65' LT.

END R.O.W. PROJECT
ST 030-3(4) 205+44.66
38.13' LT.

CURVE DATA
Δ = 28°19'56.45" RT
D = 28°19'56.42"
R = 285.00
T = 71.94
L = 140.93
E = 8.94
BANK = 0.080 FT / FT



PROJECT NAME: HARDWICK
PROJECT NUMBER: STP ST 030-3(4)
FILE NAME: d04e060bdr.dgn
PROJECT LEADER: A. BOMBARDIER
DESIGNED BY: M. NUTTER
ROW SHEET 7 OF 8 SHEETS
PLOT DATE: 05-OCT-2005
DRAWN BY: M. NUTTER
CHECKED BY: A. BOMBARDIER
SHEET 10 OF 63

BEGIN R.O.W. PROJECT

ST 030-3(4) 197+50.00

24.65' LT.

LAMOILLE RIVER

REMOVE AND RESETTING LIGHT POLE (MOD. - FLAG POLE)
200+33 - 200+49 LT (3 EA)

CONSTRUCT DRIVE
200+60 LT 24' PAVED
YIELDING MARKER POSTS
10 EA

STEEL BEAM GUARDRAIL
203+00 - 206+25 LT 325'
ANCHOR FOR STEEL BEAM GUARDRAIL
1 EA
REMOVAL AND DISPOSAL OF GUARDRAIL
205+60 - 206+25 LT

STONE FILL, T
SLOPE STABIL
200+60 - 203
STONE FILL, T
SLOPE STABIL
200+60 - 203
REMOVAL AND DISPOSAL OF GUIDE POSTS
206+20 +/-
PLUG EXIST

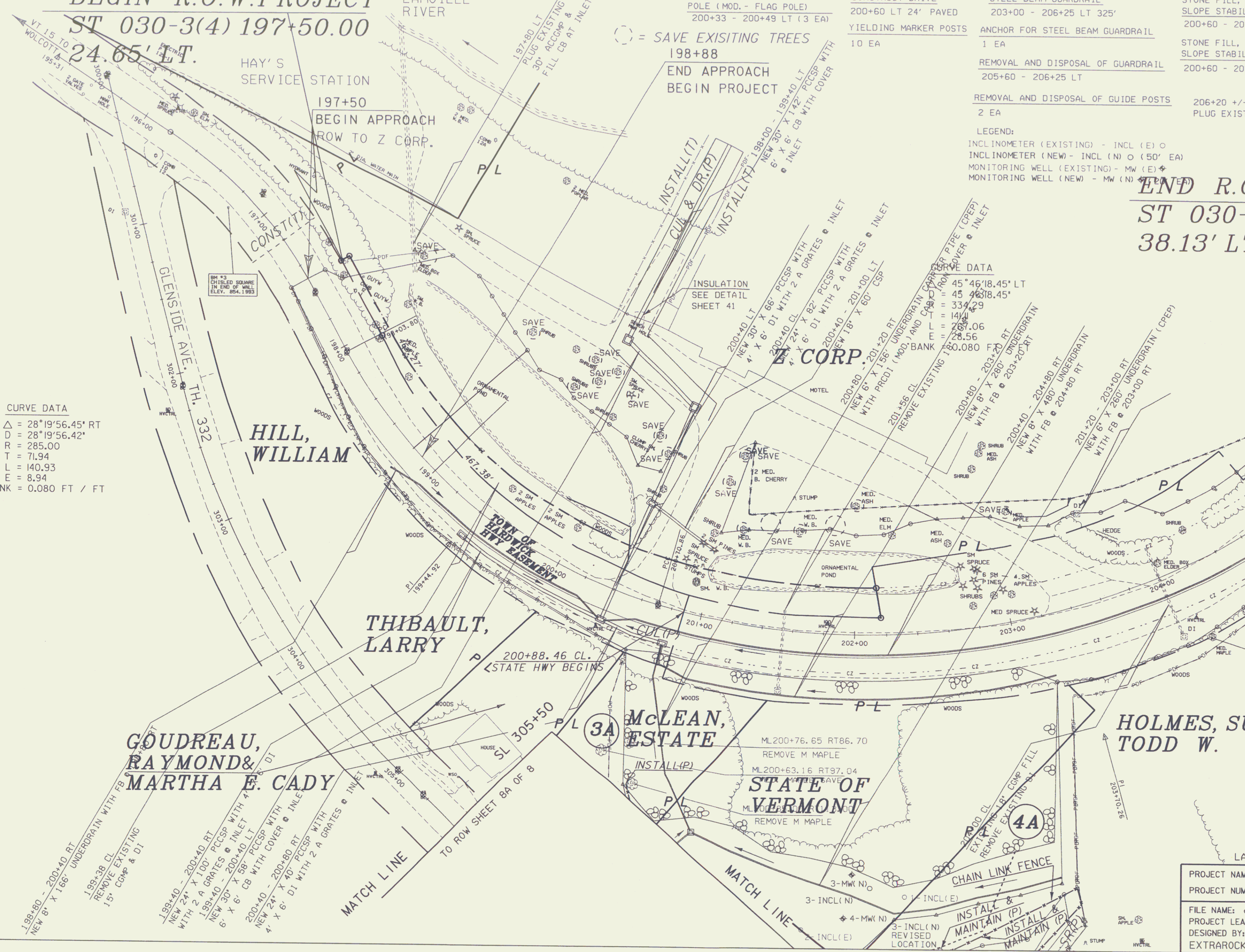
○ = SAVE EXISTING TREES

198+88
END APPROACH
BEGIN PROJECT

LEGEND:
INCLINOMETER (EXISTING) - INCL (E) ○
INCLINOMETER (NEW) - INCL (N) ○ (50' EA)
MONITORING WELL (EXISTING) - MW (E) ⊕
MONITORING WELL (NEW) - MW (N) ⊕ (50' EA)

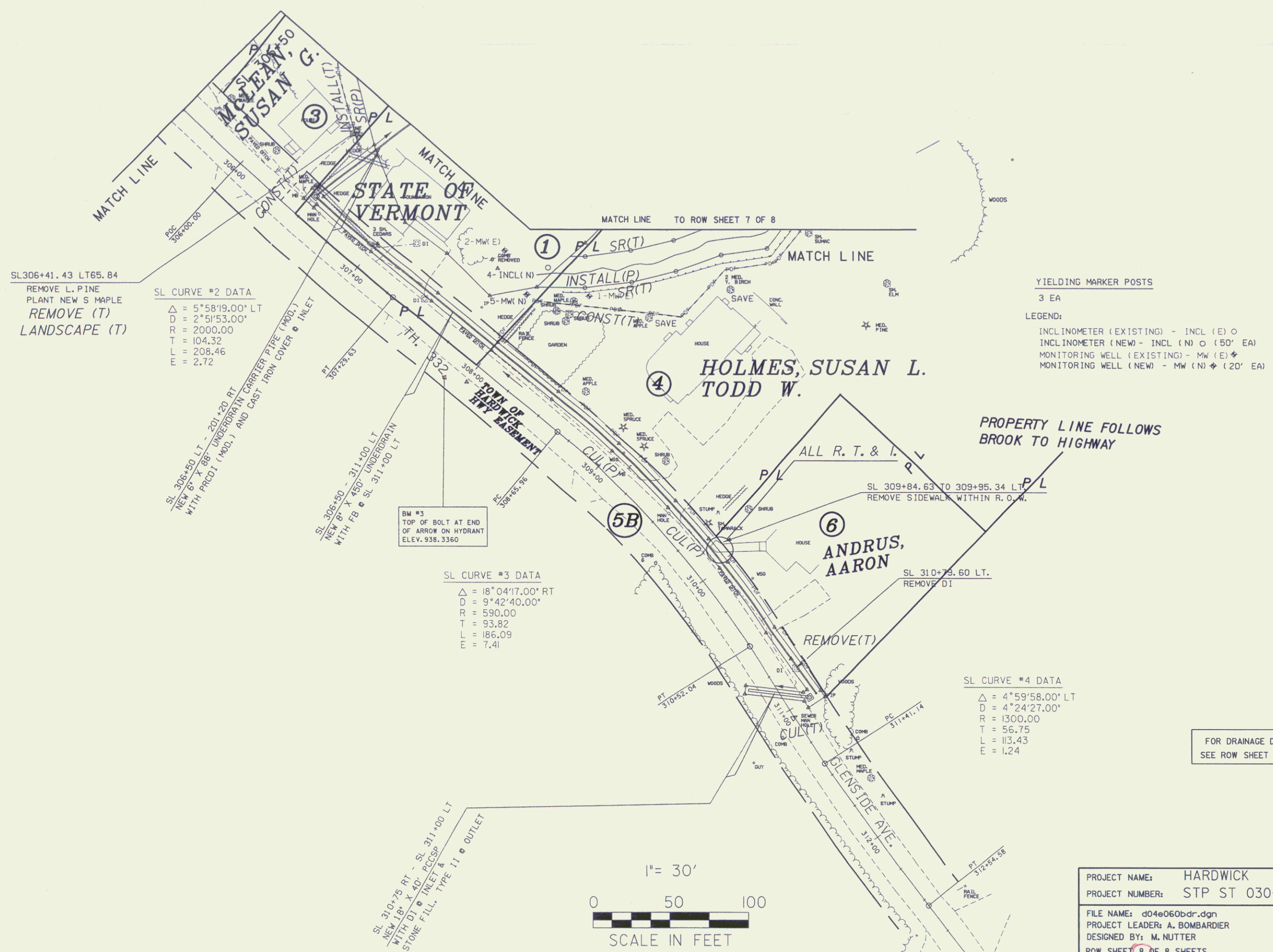
END R.O.
ST 030-
38.13' LT

CURVE DATA
Δ = 28°19'56.45" RT
D = 28°19'56.42"
R = 285.00
T = 71.94
L = 140.93
E = 8.94
BANK = 0.080 FT / FT



CURVE DATA
45°46'18.45" LT
45°46'18.45"
334.29
141.42
207.06
28.56
160.080 FT

PROJECT NAME
PROJECT NUMBER
FILE NAME: d
PROJECT LEAD
DESIGNED BY:
EXTRAROCK.



SL306+41.43 LT65.84
REMOVE L. PINE
PLANT NEW S MAPLE
REMOVE (T)
LANDSCAPE (T)

SL CURVE #2 DATA
Δ = 5°58'19.00" LT
D = 2°51'53.00"
R = 2000.00
T = 104.32
L = 208.46
E = 2.72

SL 300+50 LT - 201+20 RT
NEW 60" X 48" UNDERDRAIN CARRIER PIPE (MOD.)
WITH PRECAST (MOD.) AND CAST IRON COVER & INLET

SL 300+50 - 311+00 LT
NEW 60" X 48" UNDERDRAIN
WITH FB & SL 311+00 LT

BM #3
TOP OF BOLT AT END
OF ARROW ON HYDRANT
ELEV. 938.3360

SL CURVE #3 DATA
Δ = 18°04'17.00" RT
D = 9°42'40.00"
R = 590.00
T = 93.82
L = 186.09
E = 7.41

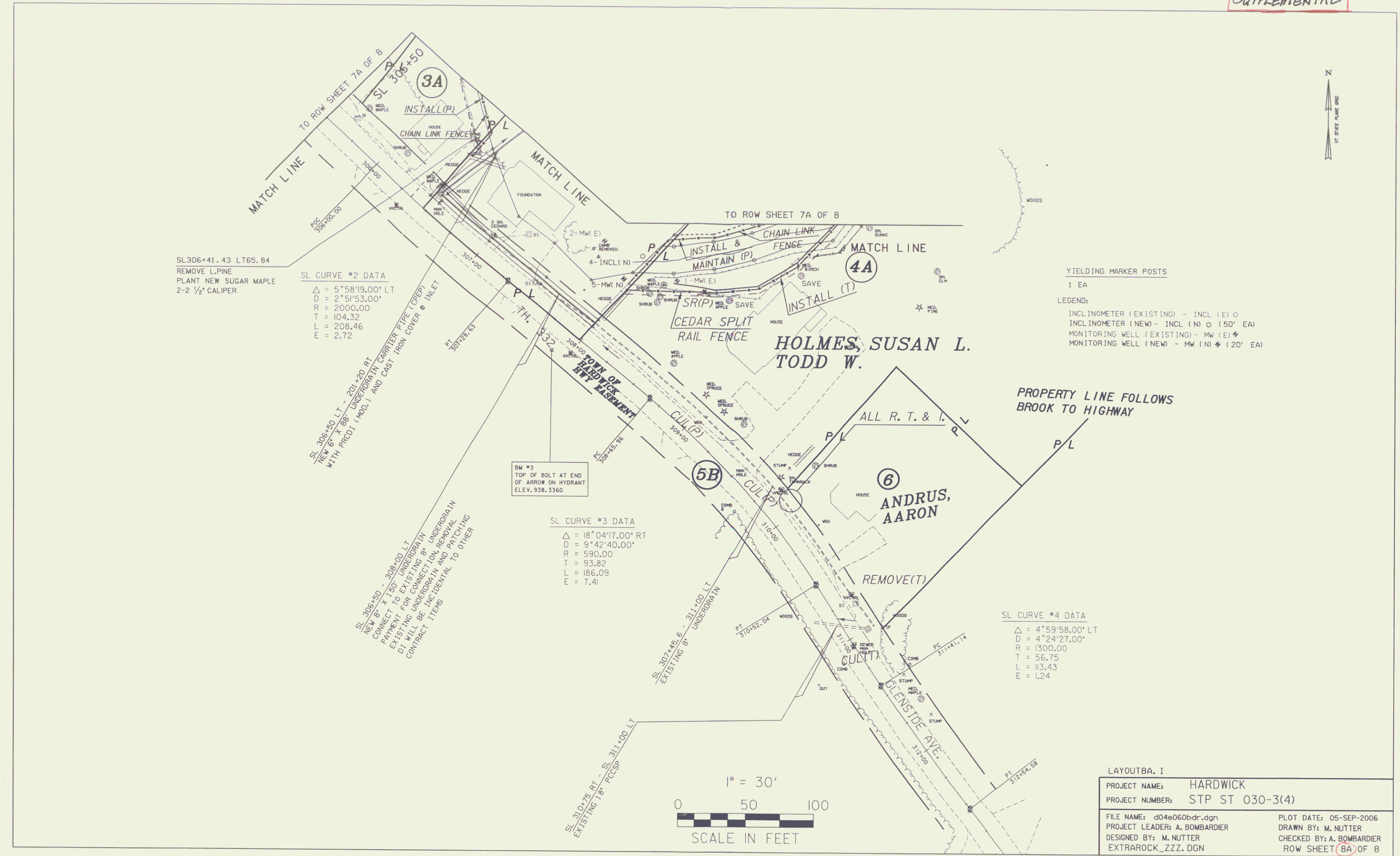
SL CURVE #4 DATA
Δ = 4°59'58.00" LT
D = 4°24'27.00"
R = 1300.00
T = 56.75
L = 113.43
E = 1.24

FOR DRAINAGE DETAILS
SEE ROW SHEET 5 OF 8

1" = 30'
0 50 100
SCALE IN FEET

PROJECT NAME: HARDWICK
PROJECT NUMBER: STP ST 030-3(4)
FILE NAME: d04e060bdr.dgn PLOT DATE: 15-AUG-2005
PROJECT LEADER: A. BOMBARDIER DRAWN BY: M. NUTTER
DESIGNED BY: M. NUTTER CHECKED BY: A. BOMBARDIER
ROW SHEET 8 OF 8 SHEETS SHEET 11 OF 63

SUPPLEMENTAL



SL306+41.43 LT65.84
REMOVE L.PINE
PLANT NEW SUGAR MAPLE
2-2 1/2\"/>

SL CURVE #2 DATA
Δ = 5°58'19.00\"/>

SL 306+30 LT - 201+20 RT
NEW 6\"/>

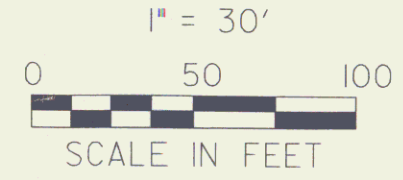
SL 306+30 - 308+00 LT
NEW 6\"/>

BM #3
TOP OF BOLT AT END
OF ARROW ON HYDRANT
ELEV. 938.3360

SL CURVE #3 DATA
Δ = 18°04'17.00\"/>

SL 307+45.6 - 311+00 LT
EXISTING 8\"/>

SL 310+75 RT - SL 311+00 LT
EXISTING 8\"/>



YIELDING MARKER POSTS
1 EA

LEGEND:
INCLINOMETER (EXISTING) - INCL (E) ○
INCLINOMETER (NEW) - INCL (N) ○ (50' EA)
MONITORING WELL (EXISTING) - MW (E) ⊕
MONITORING WELL (NEW) - MW (N) ⊕ (20' EA)

PROPERTY LINE FOLLOWS
BROOK TO HIGHWAY

LAYOUT8A.I	
PROJECT NAME:	HARDWICK
PROJECT NUMBER:	STP ST 030-3(4)
FILE NAME:	d04e06bdr.dgn
PROJECT LEADER:	A. BOMBARDIER
DESIGNED BY:	M. NUTTER
EXTRAROCK_ZZZ.DGN	
PLOT DATE:	05-SEP-2006
DRAWN BY:	M. NUTTER
CHECKED BY:	A. BOMBARDIER
ROW SHEET (8A) OF 8	