

# BEGIN R.O.W. PROJECT

ST 030-3(4) 197+50.00

24.65' LT.

LAMOILLE RIVER

REMOVE AND RESETTING LIGHT POLE (MOD. - FLAG POLE)  
200+33 - 200+49 LT (3 EA)

CONSTRUCT DRIVE  
200+60 LT 24' PAVED  
YIELDING MARKER POSTS  
10 EA

STEEL BEAM GUARDRAIL  
203+00 - 206+25 LT 325'  
ANCHOR FOR STEEL BEAM GUARDRAIL  
1 EA  
REMOVAL AND DISPOSAL OF GUARDRAIL  
205+60 - 206+25 LT

STONE FILL, T  
SLOPE STABIL  
200+60 - 203  
STONE FILL, T  
SLOPE STABIL  
200+60 - 203  
REMOVAL AND DISPOSAL OF GUIDE POSTS  
206+20 +/-  
PLUG EXIST

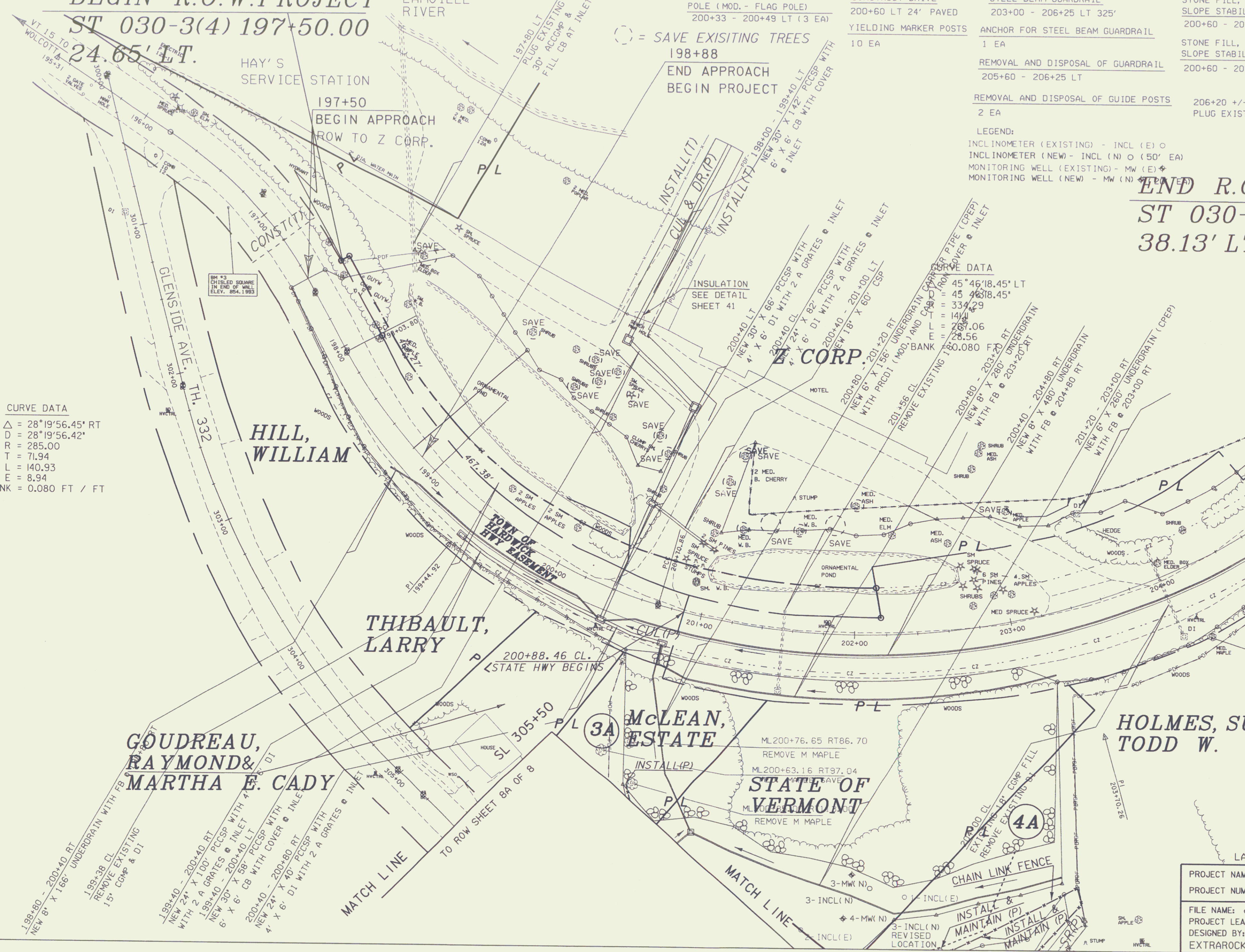
○ = SAVE EXISTING TREES

198+88  
END APPROACH  
BEGIN PROJECT

LEGEND:  
INCLINOMETER (EXISTING) - INCL (E) ○  
INCLINOMETER (NEW) - INCL (N) ○ (50' EA)  
MONITORING WELL (EXISTING) - MW (E) ⊕  
MONITORING WELL (NEW) - MW (N) ⊕ (50' EA)

END R.O.  
ST 030-  
38.13' LT

CURVE DATA  
Δ = 28°19'56.45" RT  
D = 28°19'56.42"  
R = 285.00  
T = 71.94  
L = 140.93  
E = 8.94  
BANK = 0.080 FT / FT



CURVE DATA  
45°46'18.45" LT  
45°46'18.45"  
339.29  
141.42  
207.06  
28.56  
160.080 FT

PROJECT NAME  
PROJECT NUMBER  
FILE NAME: d  
PROJECT LEAD  
DESIGNED BY:  
EXTRAROCK.