

Original Drawing - Ink on Polyester film meeting the requirements of 27 V.S.A. § 1403

R.O.W. PLANS

STATE OF VERMONT
AGENCY OF TRANSPORTATION

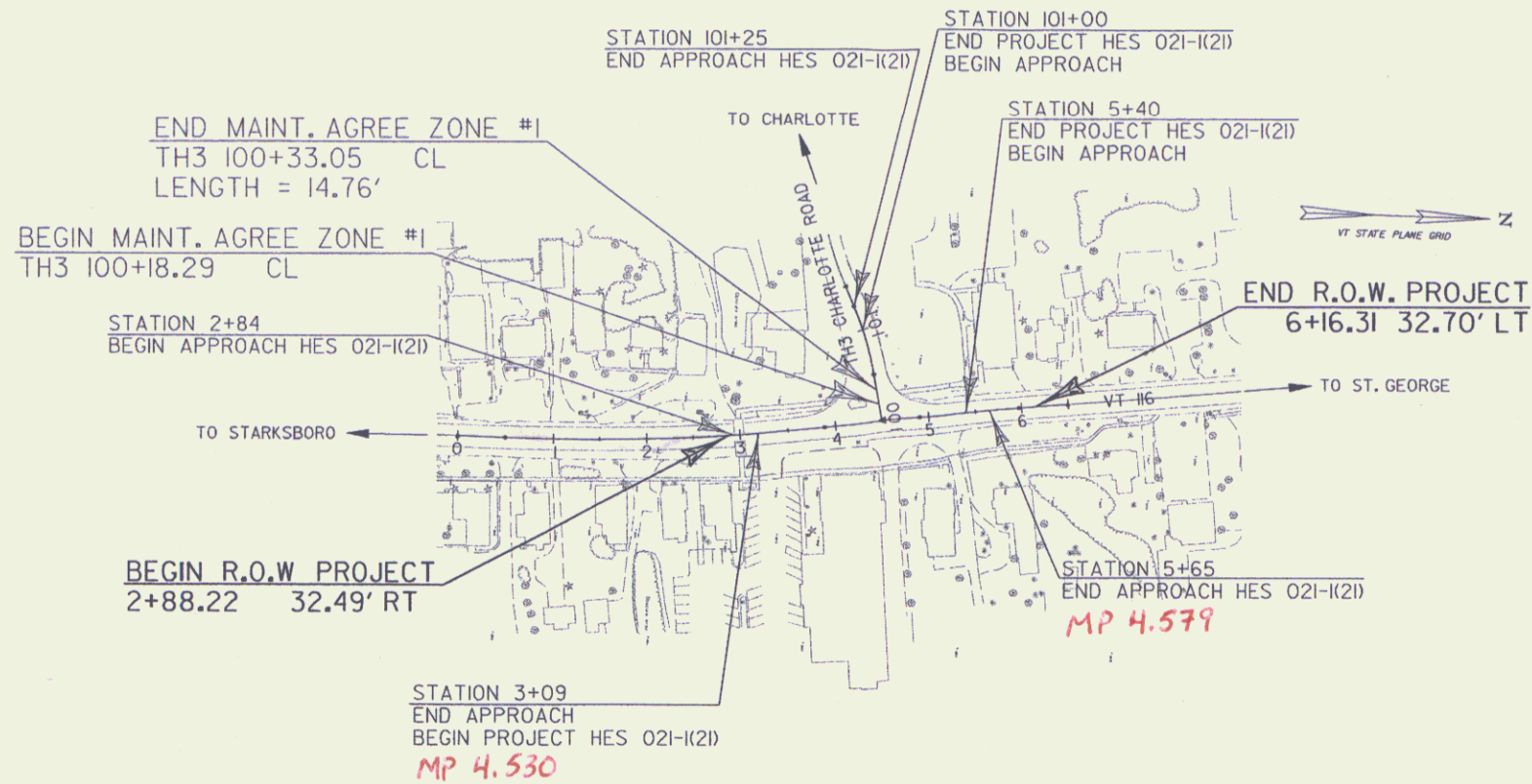
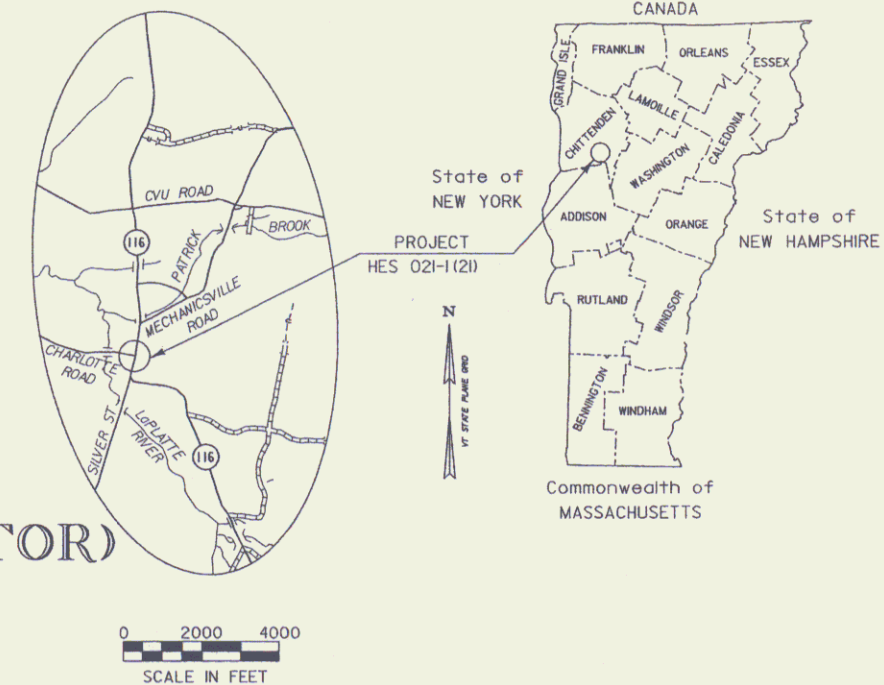


PROPOSED SAFETY IMPROVEMENTS
TOWN OF HINESBURG
COUNTY OF CHITTENDEN
VT 116 (MINOR ARTERIAL)
AT CHARLOTTE ROAD (MAJOR T.H. COLLECTOR)

BEGINNING ON VT 116 AT A POINT APPROXIMATELY 130 FT. SOUTH OF CHARLOTTE ROAD AND EXTENDING NORTHERLY ALONG VT 116 FOR 231 FT.

LENGTH OF ROADWAYS: 231 FT = 0.044 MILES
LENGTH OF PROJECT: 231 FT = 0.044 MILES
LENGTH OF R.O.W. PROJECT: 328 FT = 0.062 MILES

WORK TO BE PERFORMED UNDER THIS PROJECT INCLUDES REHABILITATION OF VT 116 AND CHARLOTTE RD. INTERSECTION, WITH SOME MINOR WIDENING AND SIDEWALK RECONSTRUCTION, PAVEMENT MARKINGS AND SIGNS, AND THE ADDITION OF A TRAFFIC SIGNAL SYSTEM, INCLUDING THE INSTALLATION OF PEDESTRIAN SIGNALS.

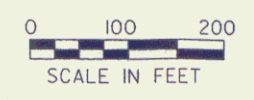


CONVENTIONAL SYMBOLS

TOWN LINE	---
LIMITS OF ACCESS	—○—○—
POINT OF ACCESS	—○—○— X
FENCE LINE	—x—x—
STONE WALL	—o—o—o—o—
TRAVELED WAY	— — — — —
GUARD RAIL	—o—o—o—o—
RAILROAD	—+—+—+—+—
SURVEY LINE	—+—+—+—+—
CULVERT	—+—+—+—+—
POWER POLE	—○—○—○—○—
TELEPHONE POLE	—○—○—○—○—
TREES	—*—*—*—*—
CONTROL OF ACCESS	— — — — —
PROPERTY LINE	— — — — —
R.O.W. TAKING LINE	— — — — —
SLOPE RIGHTS	— — — — —
TOP OF CUT	— — — — —
TOE OF SLOPE	— — — — —

AERIAL SURVEY BY: COL-EAST, INC.
SURVEYED DATE: 2004

DATUM
VERTICAL NAVD_88
HORIZONTAL NAD_83



LINES SHOWN ON THIS PLAN AS EXISTING PROPERTY LINES P/L ARE BELIEVED TO BE ACCURATE BUT SHOULD NOT BE RELIED UPON FOR PURPOSES UNRELATED TO THE STATE OF VERMONT'S ACQUISITION OF LAND AND RIGHTS FOR THIS PROJECT.

THESE PLANS ARE SUBJECT TO SUCH ENGINEERING CHANGES AS MAY BE REQUIRED BY THE FEDERAL HIGHWAY ADMINISTRATION OR THE DIRECTOR OF PROJECT DEVELOPMENT. CONSTRUCTION IS TO BE CARRIED ON IN ACCORDANCE WITH THESE PLANS AND THE STANDARD SPECIFICATIONS FOR CONSTRUCTION DATED 2001, AS APPROVED BY THE FEDERAL HIGHWAY ADMINISTRATION ON JANUARY 4, 2001 FOR USE ON THIS PROJECT, INCLUDING ALL SUBSEQUENT REVISIONS AND SUCH REVISED SPECIFICATIONS AND SPECIAL PROVISIONS AS ARE INCORPORATED IN THESE PLANS.

ALL DRIVES AS INDICATED ON PLANS ARE SUBJECT TO PERMITS PURSUANT TO TITLE 19 SECTION III, V.S.A.

Pin # 048208

THE FOLLOWING RIGHT OF WAY PLAN SHEETS PERTAIN DIRECTLY TO THE ACQUISITION OF LAND AND RIGHTS NECESSARY TO CONSTRUCT THIS TRANSPORTATION PROJECT. SHEETS REGARDING SPECIFIC CONSTRUCTION DETAILS ARE NOT INCLUDED IN THIS RECORDED SET.

APPROVED: *[Signature]* DATE: 1-17-07
Director of Program Development

APPROVED: *[Signature]* DATE: 4/10/07
Chief of Right of Way

HINESBURG
HES: 021-1(21)
ROW SHEET 1 OF 5 SHEETS

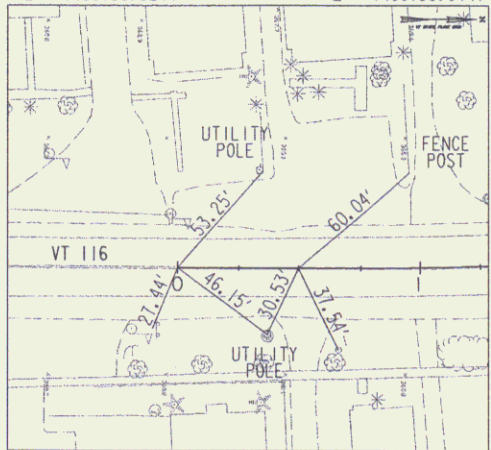


Original Drawing – Ink on Polyester film meeting the requirements of 27 V.S.A. § 1403

POB 0+00.00 PC 0+50.00

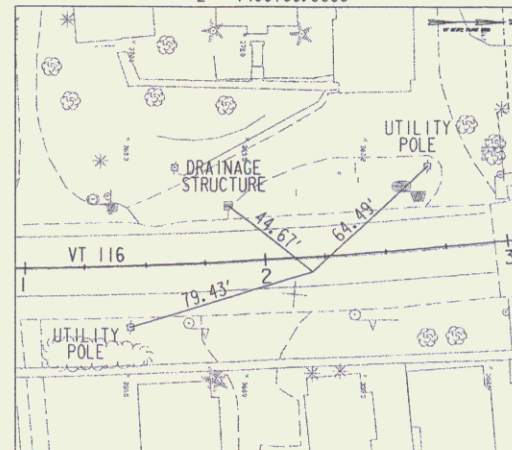
N = 666784.9519
E = 1480759.5244

N = 666834.9511
E = 1480759.8147



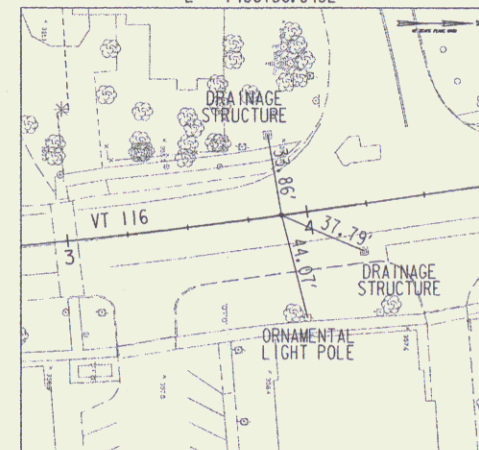
PI 2+19.79

N = 667004.7333
E = 1480760.8006



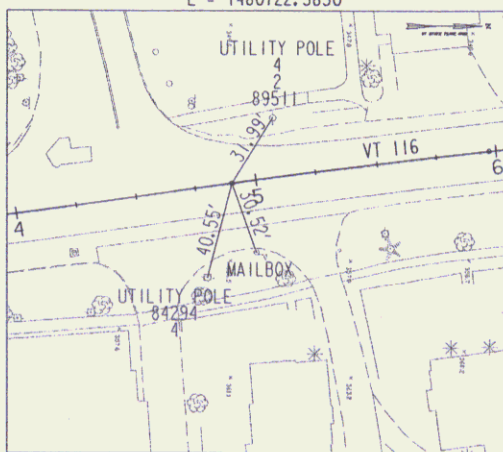
PT 3+88.96

N = 667172.8199
E = 1480736.8452



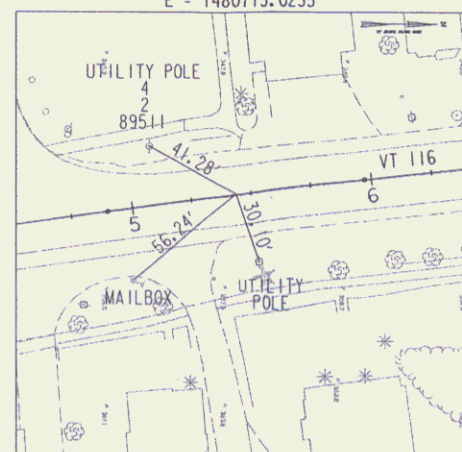
PC 4+90.03

N = 667272.8788
E = 1480722.5850



PI 5+43.62

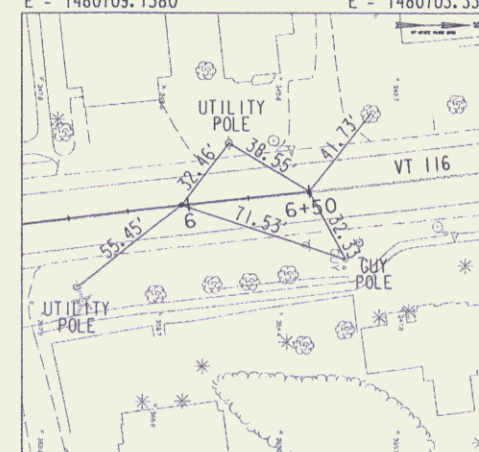
N = 667325.9350
E = 1480715.0235



PT 5+97.20 POE 6+50.00

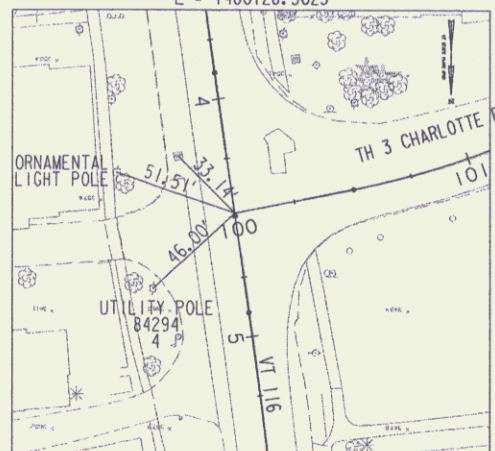
N = 667379.2032
E = 1480709.1380

N = 667431.6827
E = 1480703.3396



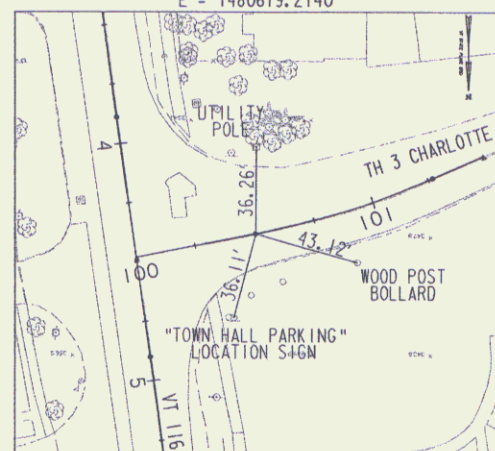
POB 100+00.00

N = 667231.3577
E = 1480728.5025



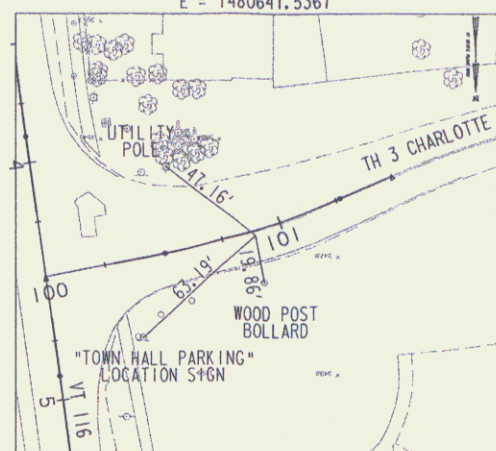
PC 100+50.27

N = 667221.4926
E = 1480679.2140



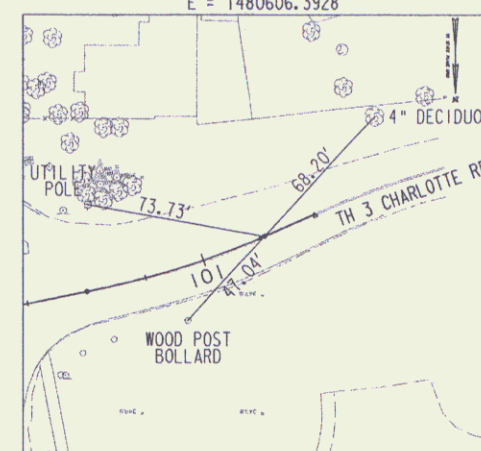
PI 100+88.69

N = 667213.9514
E = 1480641.5367



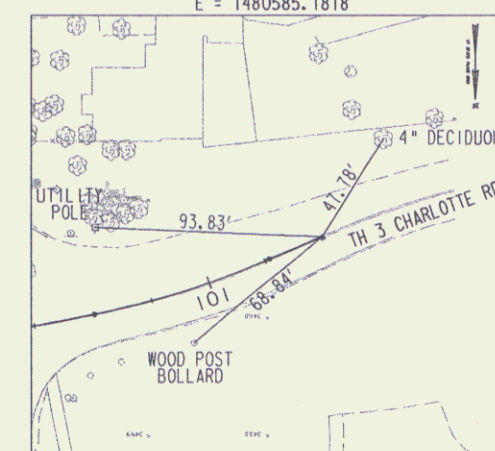
PT 101+26.81

N = 667198.4156
E = 1480606.3928



POE 101+50.00

N = 667189.0389
E = 1480585.1818



TIE SHEET

PROJECT: HINESBURG	PROJECT NO.: HES 021-K(21)
DESIGN FILE NAME: IPARM FILE NAME: SURVEYED BY: SQUAD LEADER:	...\\e\plense+r\row\z04b208+e.dgn COL-EAST, Inc. G. BAKOS
	PLOT DATE: 1/11/2007 SURVEY DATE: 2004 DRAWN BY: D. PECK ROW SHEET: 3 OF 5

VHB Vanasse Hangen Brustlin, Inc.

Original Drawing - Ink on Polyester film meeting the requirements of 27 V.S.A. § 1403

