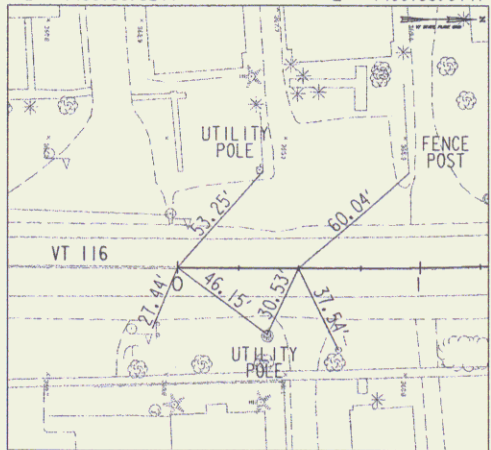


Original Drawing – Ink on Polyester film meeting the requirements of 27 V.S.A. § 1403

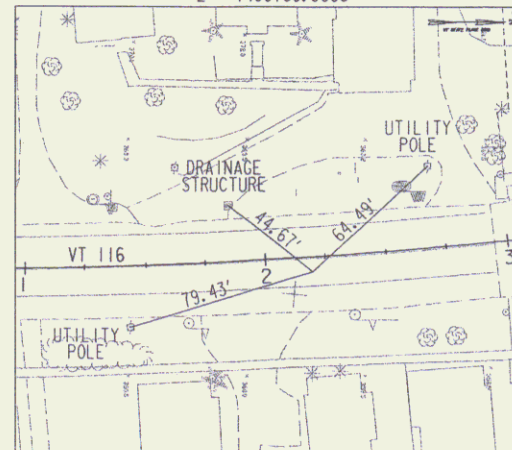
POB 0+00.00 PC 0+50.00

N = 666784.9519 E = 1480759.5244
 N = 666834.9511 E = 1480759.8147



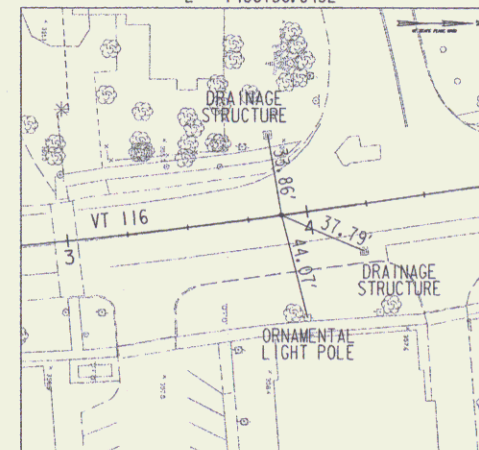
PI 2+19.79

N = 667004.7333 E = 1480760.8006



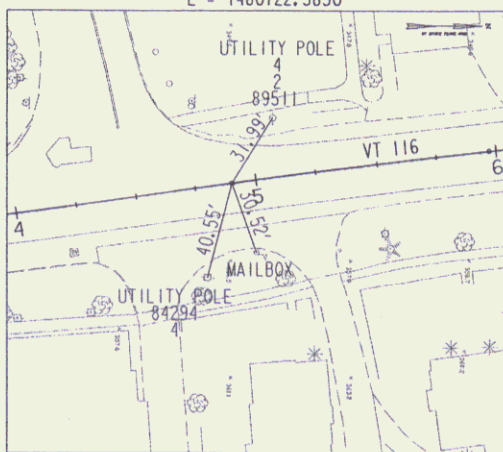
PT 3+88.96

N = 667172.8199 E = 1480736.8452



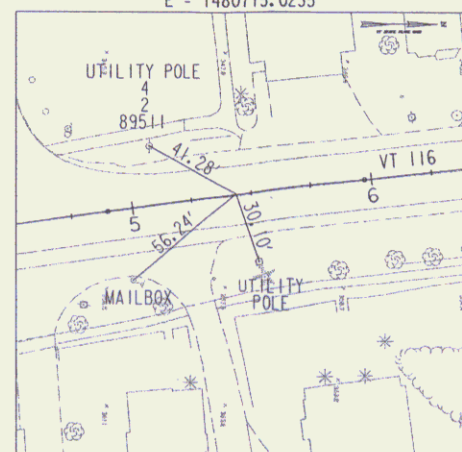
PC 4+90.03

N = 667272.8788 E = 1480722.5850



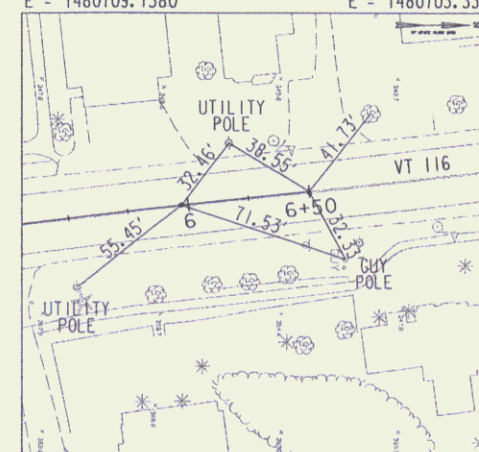
PI 5+43.62

N = 667325.9350 E = 1480715.0235



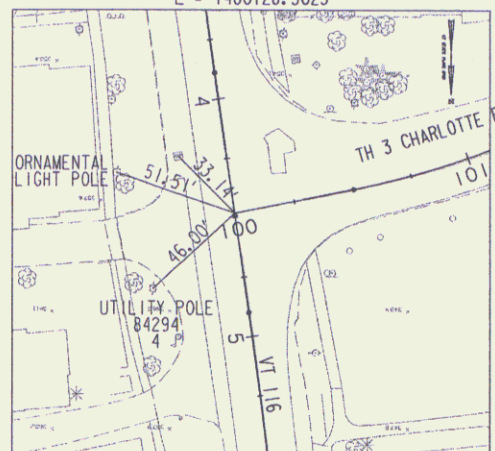
PT 5+97.20 POE 6+50.00

N = 667379.2032 E = 1480709.1380
 N = 667431.6827 E = 1480703.3396



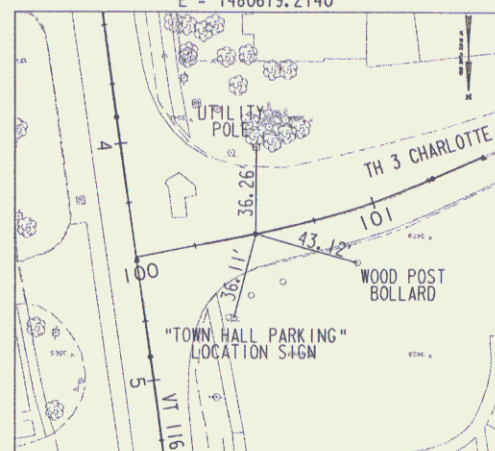
POB 100+00.00

N = 667231.3577 E = 1480728.5025



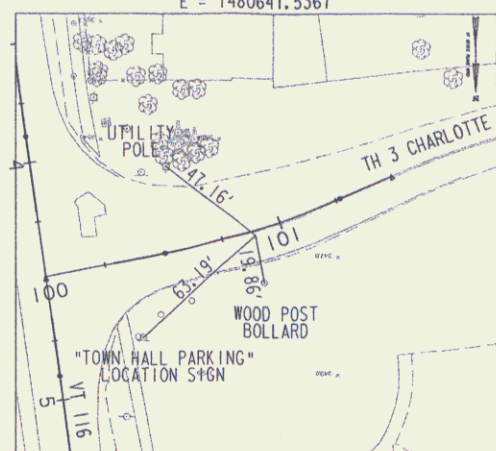
PC 100+50.27

N = 667221.4926 E = 1480679.2140



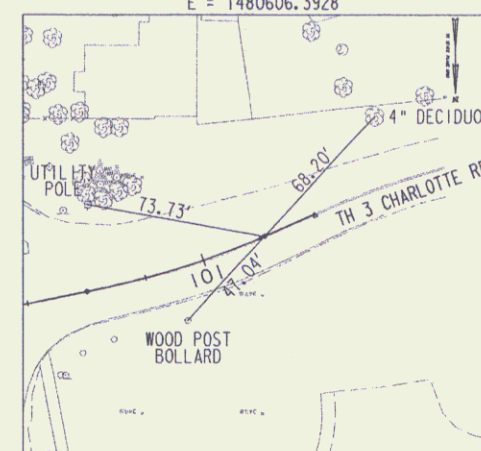
PI 100+88.69

N = 667213.9514 E = 1480641.5367



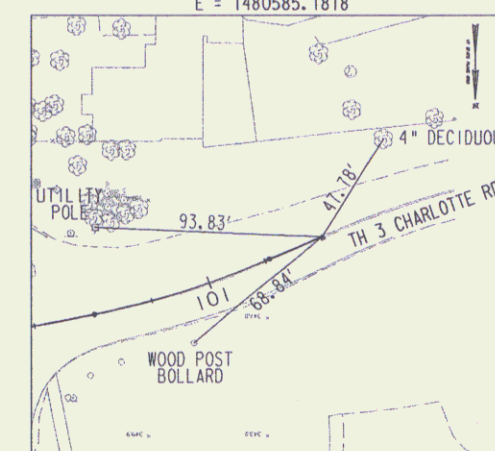
PT 101+26.81

N = 667198.4156 E = 1480606.3928



POE 101+50.00

N = 667189.0389 E = 1480585.1818



TIE SHEET

PROJECT: HINESBURG	PROJECT NO.: HES 021-K(21)
DESIGN FILE NAME: ...\\e\plense+r\row\z04b208+e.dgn	PLOT DATE: 1/11/2007
IPARM FILE NAME:	SURVEY DATE: 2004
SURVEYED BY: COL-EAST, Inc.	DRAWN BY: D. PECK
SQUAD LEADER: G. BAKOS	ROW SHEET: 3 OF 5
TEXT FILE:	

VHB Vanasse Hangen Brustlin, Inc.