

Original Drawing - Ink on polymer meeting the requirements of 27 V.S.A. § 1403

STATE OF VERMONT AGENCY OF TRANSPORTATION



R.O.W. PLANS

PROPOSED IMPROVEMENT TOWN OF BARTON, VILLAGE OF ORLEANS COUNTY OF ORLEANS

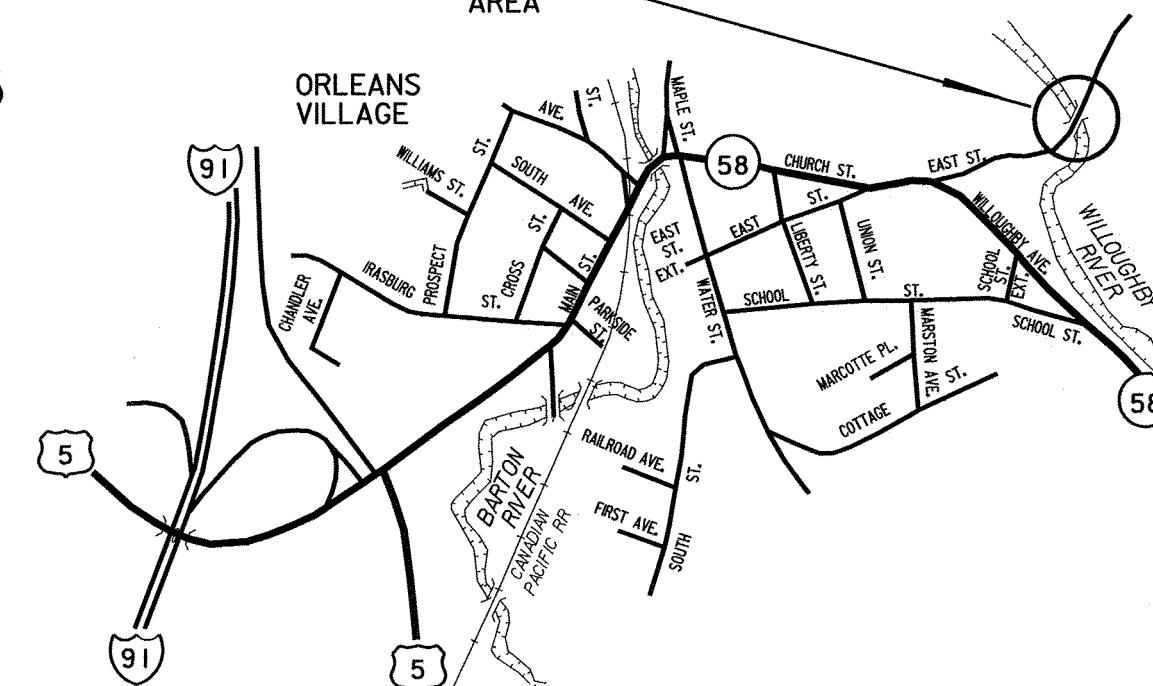
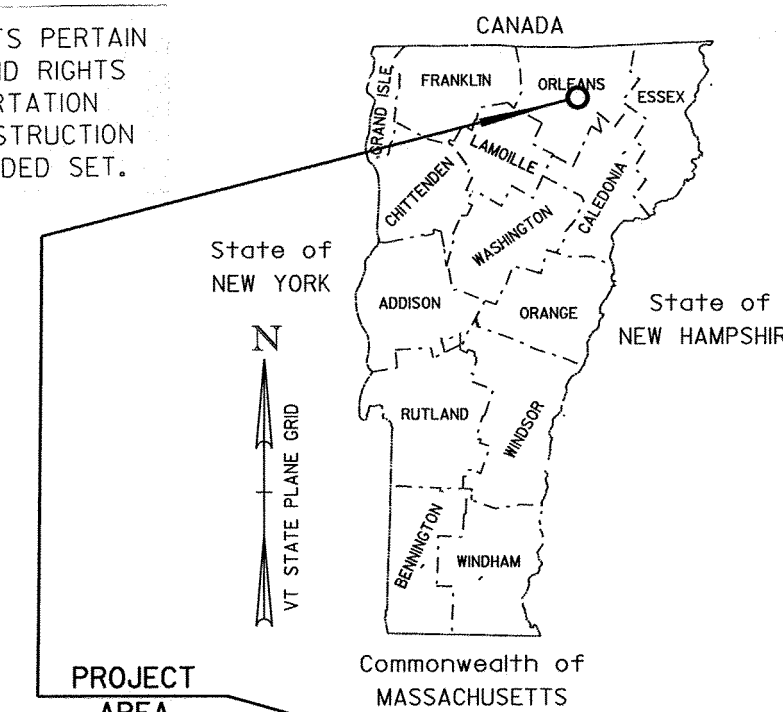
ROUTE NO : TH #3, CL 3 BRIDGE NO : #61

PROJECT LOCATION : LOCATED IN THE COUNTY OF ORLEANS, VILLAGE OF ORLEANS, ON TOWN HIGHWAY #3 (EAST STREET), BRIDGE #61 OVER THE WILLOUGHBY RIVER, APPROXIMATELY 0.2 MILE EAST OF THE JUNCTION OF TOWN HIGHWAY #1.

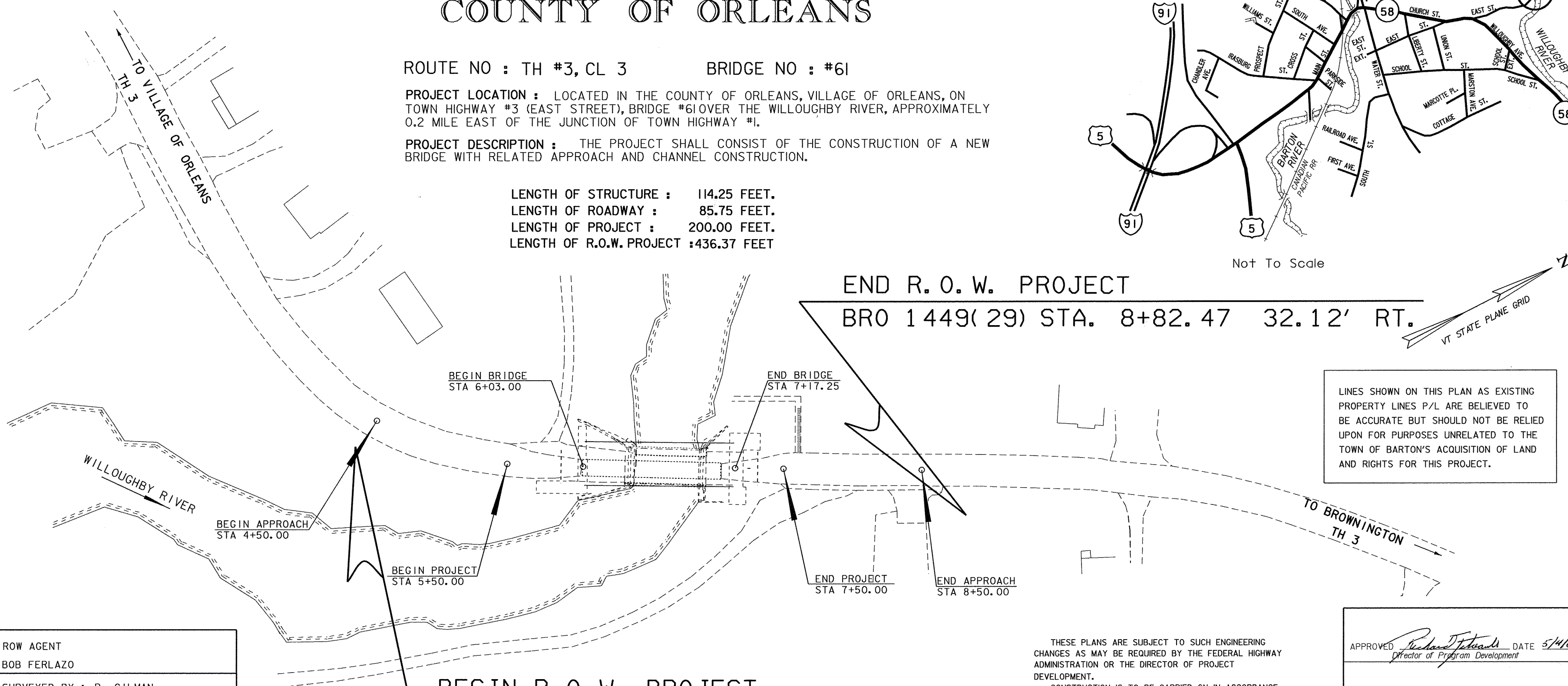
PROJECT DESCRIPTION : THE PROJECT SHALL CONSIST OF THE CONSTRUCTION OF A NEW BRIDGE WITH RELATED APPROACH AND CHANNEL CONSTRUCTION.

LENGTH OF STRUCTURE : 114.25 FEET.
LENGTH OF ROADWAY : 85.75 FEET.
LENGTH OF PROJECT : 200.00 FEET.
LENGTH OF R.O.W. PROJECT : 436.37 FEET

THE FOLLOWING RIGHT OF WAY PLAN SHEETS PERTAIN DIRECTLY TO THE ACQUISITION OF LAND AND RIGHTS NECESSARY TO CONSTRUCT THIS TRANSPORTATION PROJECT. SHEETS REGARDING SPECIFIC CONSTRUCTION DETAILS ARE NOT INCLUDED IN THIS RECORDED SET.



Not To Scale



END R. O. W. PROJECT
BRO 1449(29) STA. 8+82.47 32.12' RT.

BEGIN R. O. W. PROJECT
BRO 1449(29) STA. 4+46.10 24.10' RT.

LINES SHOWN ON THIS PLAN AS EXISTING PROPERTY LINES P/L ARE BELIEVED TO BE ACCURATE BUT SHOULD NOT BE RELIED UPON FOR PURPOSES UNRELATED TO THE TOWN OF BARTON'S ACQUISITION OF LAND AND RIGHTS FOR THIS PROJECT.

CONVENTIONAL SYMBOLS	
COUNTY LINE	
TOWN LINE	
LIMITS OF ACCESS	
POINT OF ACCESS	
FENCE LINE	
STONE WALL	
TRAVELED WAY	
GUARD RAIL	
RAILROAD	
SURVEY LINE	
CULVERT	
POWER POLE	
TELEPHONE POLE	
TREES	
CONTROL OF ACCESS	
PROPERTY LINE	
R.O.W. TAKING LINE	
SLOPE RIGHTS	
TOP OF CUT	
TOE OF SLOPE	

ROW AGENT
BOB FERLAZO

SURVEYED BY : R. GILMAN
SURVEYED DATE : 10/2001

DATUM
VERTICAL NAVD 88
HORIZONTAL NAD 83 (96)

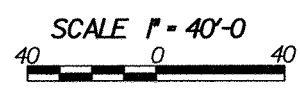
THESE PLANS ARE SUBJECT TO SUCH ENGINEERING CHANGES AS MAY BE REQUIRED BY THE FEDERAL HIGHWAY ADMINISTRATION OR THE DIRECTOR OF PROJECT DEVELOPMENT.

CONSTRUCTION IS TO BE CARRIED ON IN ACCORDANCE WITH THESE PLANS AND THE STANDARD SPECIFICATIONS FOR CONSTRUCTION DATED 2001, AS APPROVED BY THE FEDERAL HIGHWAY ADMINISTRATION ON JANUARY 4, 2001 FOR USE ON THIS PROJECT, INCLUDING ALL SUBSEQUENT REVISIONS AND SUCH REVISED SPECIFICATIONS AND SPECIAL PROVISIONS AS ARE INCORPORATED IN THESE PLANS.

APPROVED *Richard J. Fitch* DATE 5/4/05
Director of Program Development

APPROVED *William J. Moore* DATE 5/2/05
Chief of Right of Way

BARTON
BRO 1449(29)
R.O.W. SHEET 1 OF 13 SHEETS



GPS CONTROL POINTS

HVCTRL #1

STANDARD DISC STAMPED

RAINBOW AZ

** N = 48127.423

E = 17026.428

ELEV. =

GENERAL LOCATION, IRASBURG, VT. TO REACH FROM THE INTERSECTION OF I-91 AND I-191 AT EXIT 27 IN DERBY GO SOUTH ALONG I-91 SOUTHBOUND FOR 7.2 MI (11.6 KM) TO MILE MARKER 162.90 ON THE RIGHT AND THE SITE OF THE MARK ON THE RIGHT ON A GRASSY SLOPE ABOVE THE SOUTHWEST END OF A ROCK CUT. IT IS 1.4 MI (2.3 KM) NORTH ALONG I-91 FROM EXIT 26 IN ORLEANS. THE MARK IS SET IN THE TOP OF A 2.0 M (6.6 FT) X 0.5 M (1.6 FT) ROCK OUTCROP WHICH PROJECTS ABOUT 10 CM ABOVE GROUND SURFACE. IT IS 31.0 M (101.7 FT) (SLOPE) NORTHWEST OF THE NORTHWEST EDGE OF PAVEMENT OF I-91 SOUTHBOUND, 39.3 M (128.9 FT) (SLOPE) SOUTHWEST OF THE RIGHT-OF-WAY FENCE, 36.8 M (120.7 FT) SOUTHWEST OF A 35 CM ASH, 24.7 M (81.0 FT) NORTHEAST OF A 25 CM ELM, AND 1.4 M (4.6 FT) NORTHWEST OF A FIBERGLASS WITNESS POST.

HVCTRL #2

STANDARD DISC STAMPED

RAINBOW

** N = 43347.296

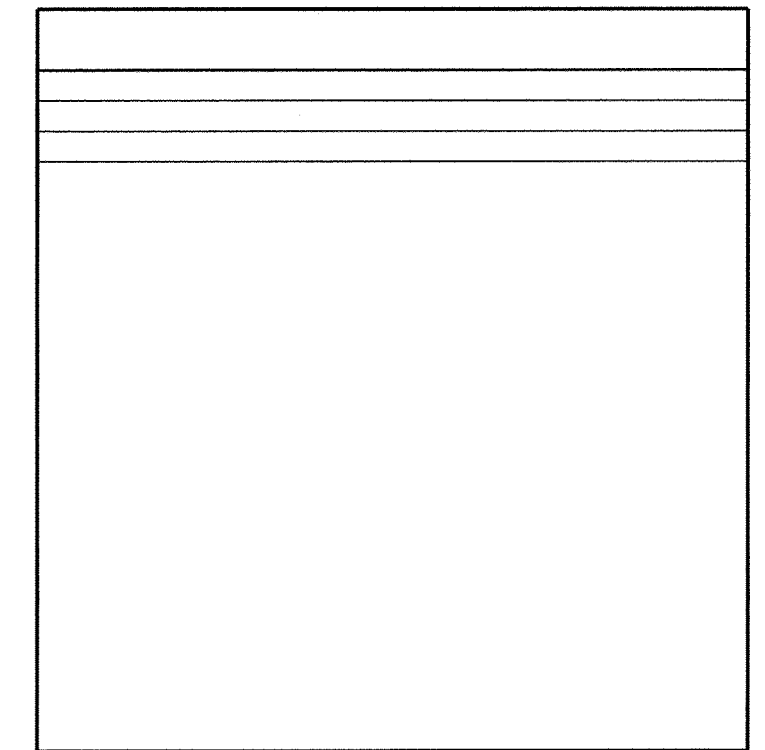
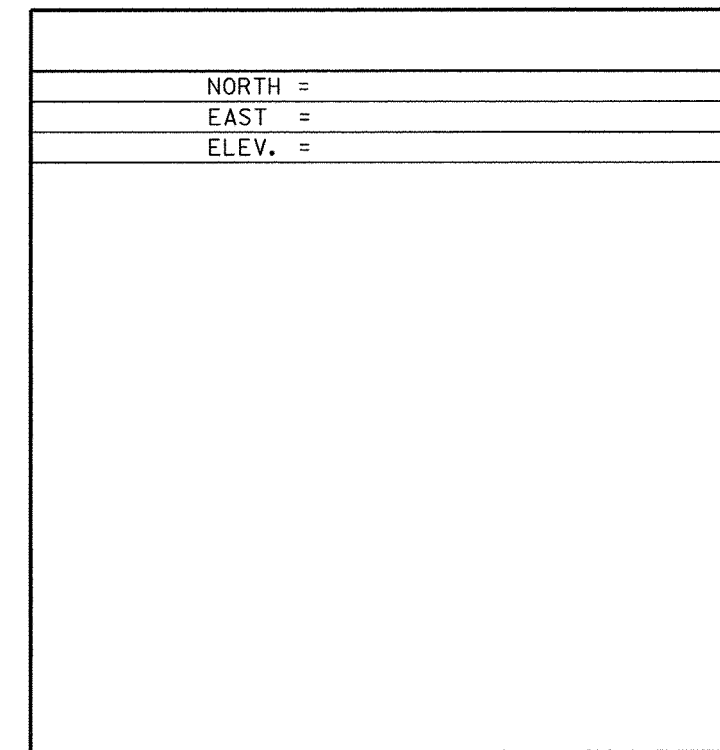
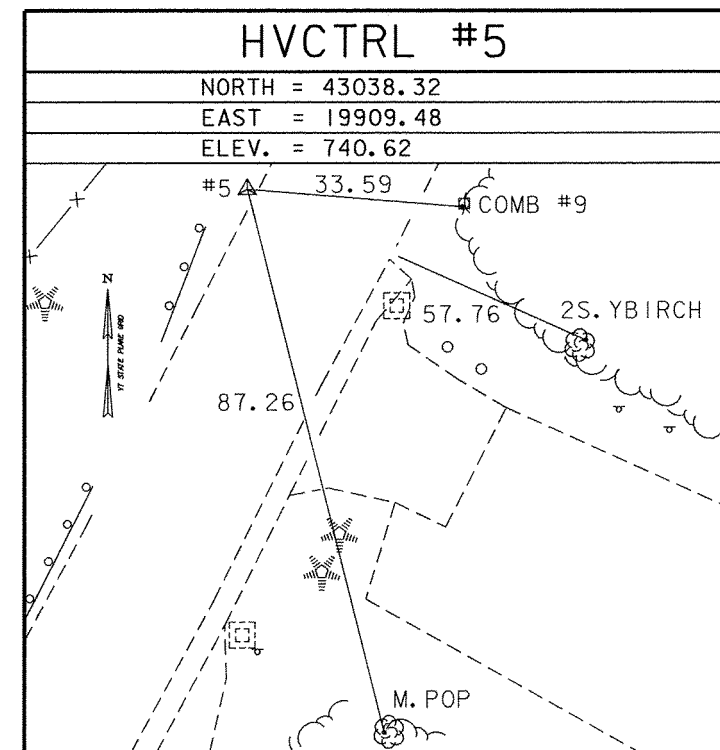
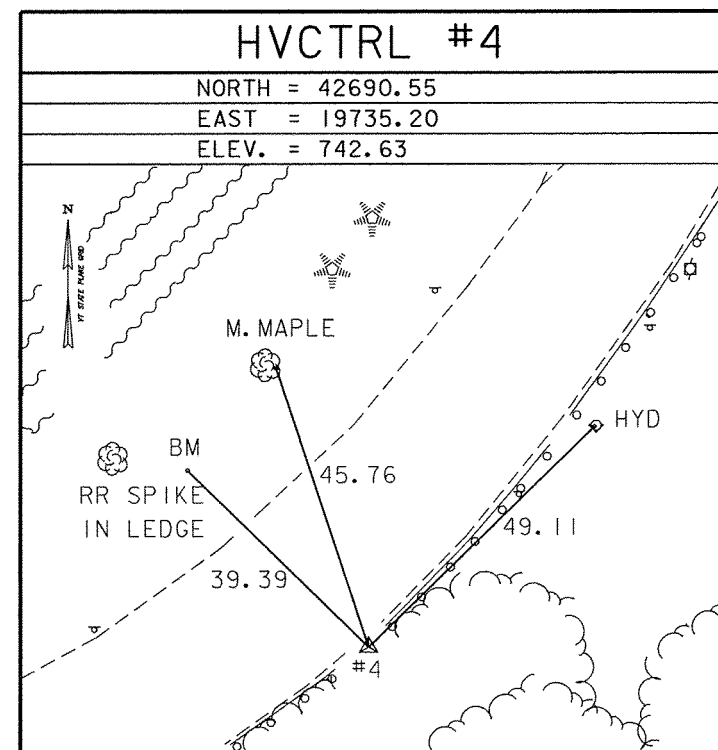
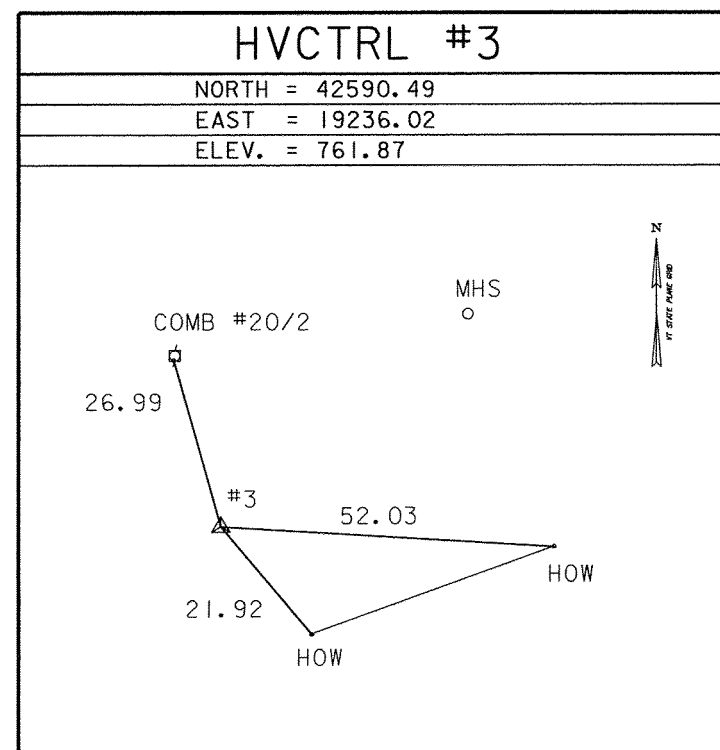
E = 20148.236

ELEV. = 762.57

GENERAL LOCATION, BARTON, VT., IN THE VILLAGE OF ORLEANS. TO REACH FROM THE MOST EASTERLY INTERSECTION OF VT ROUTE 58 AND U.S. ROUTE 5 GO NORTHEAST ALONG VT ROUTE 58 FOR 0.6 MI (1.0 KM) TO THE INTERSECTION OF WILLOUGHBY AVENUE LEFT. TURN LEFT AND GO NORTHEAST ALONG WILLOUGHBY AVENUE FOR 0.25 MI (0.40 KM) TO THE SITE OF THE MARK ON THE LEFT, ABOUT OPPOSITE THE ENTRANCE DRIVE TO THE PLEASANT VIEW CEMETERY. THE MARK IS SET 4 CM BELOW GROUND SURFACE IN THE TOP OF A 30 CM DIAMETER CONCRETE MONUMENT. IT IS 5.6 M (18.4 FT) NORTHWEST OF AND ABOUT 0.1 M (0.3 FT) LOWER THAN THE CENTERLINE OF WILLOUGHBY AVENUE, 24.4 M (80.1 FT) NORTH NORTHWEST OF THE MOST NORTHEASTERLY BRICK MASONRY GATE POST FOR THE CEMETERY, 16.8 M (55.1 FT) WEST OF POLE NO. 12, AND 13.3 M (43.6 FT) SOUTHWEST OF A GUY POLE AND A FIBERGLASS WITNESS POST.

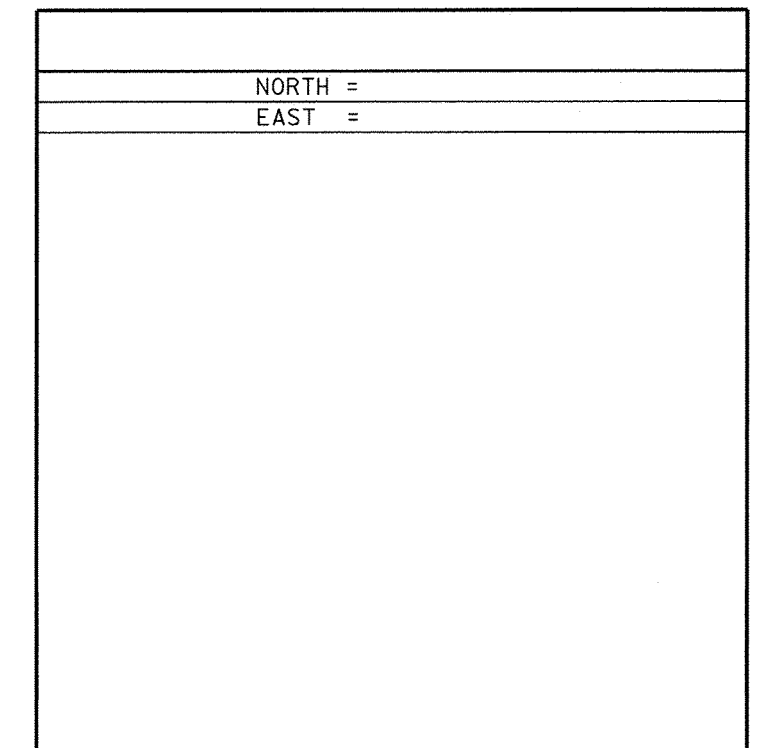
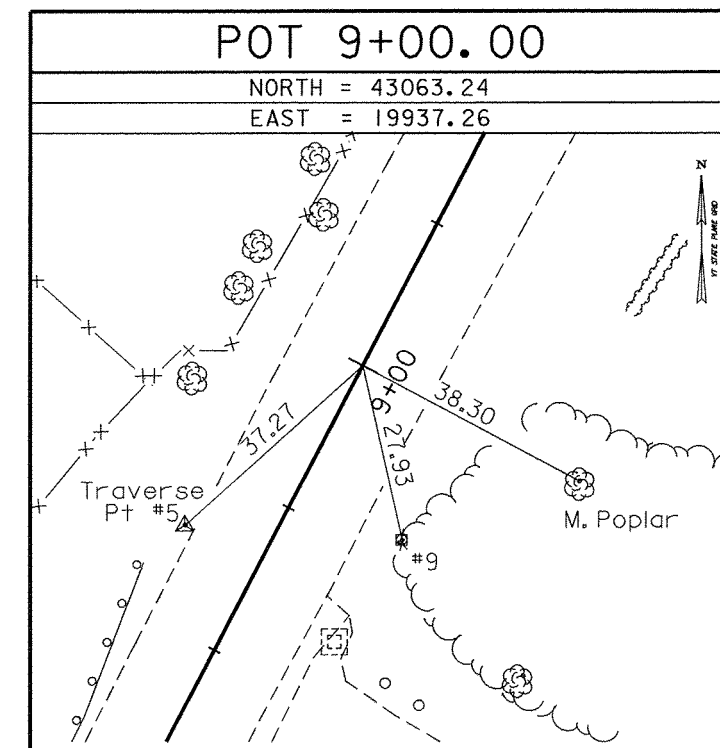
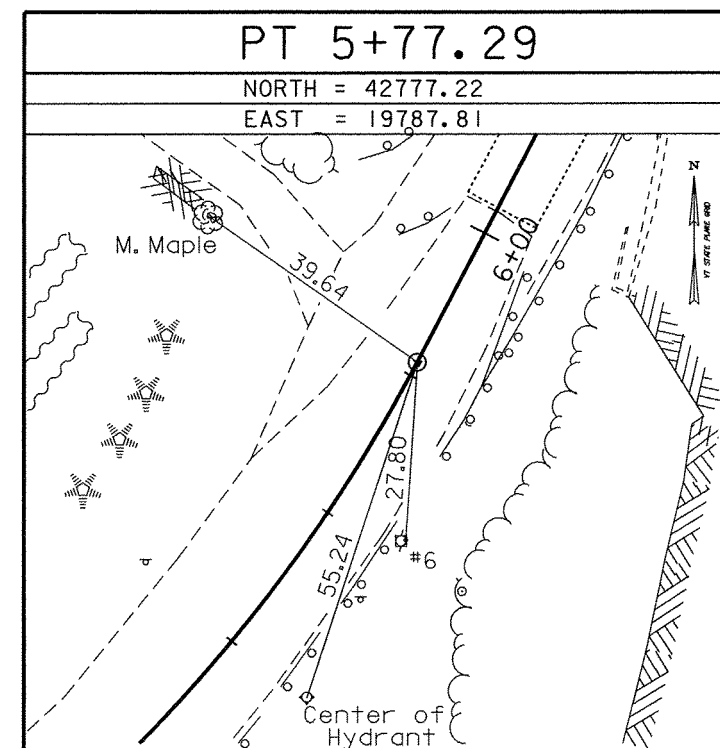
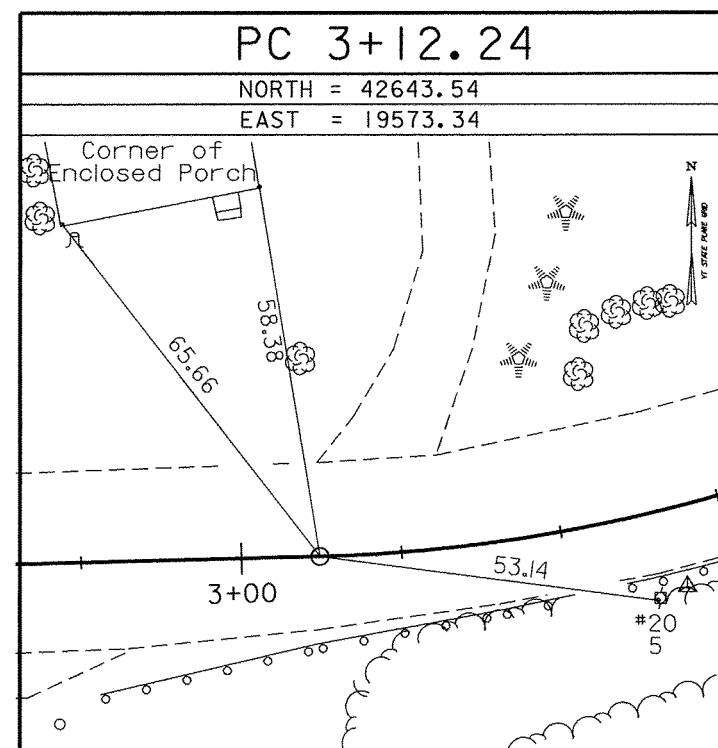
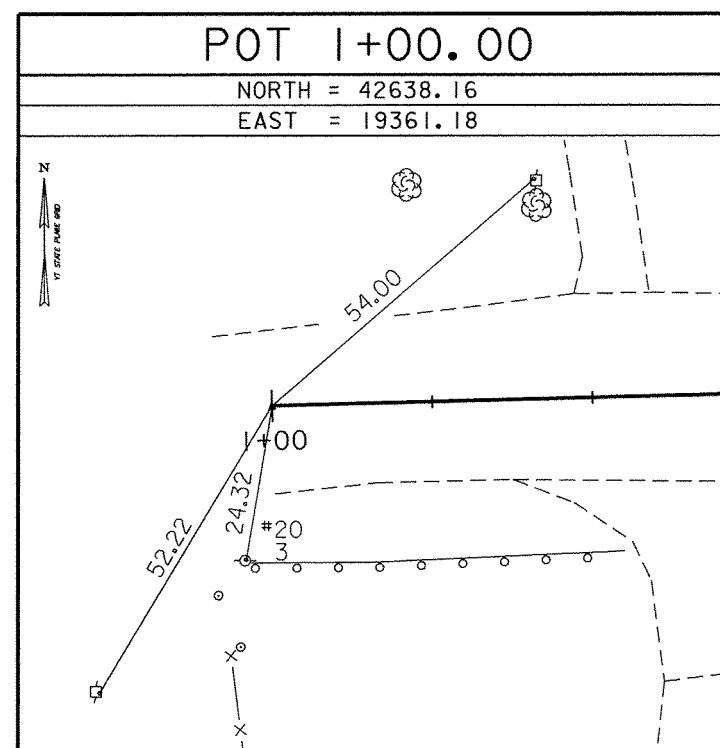
** TO ALLOW THE AGENCY DESIGN PLANE COORDINATES TO FIT THE STATE PLANE COORDINATES, ADD 800000 TO THE NORTING & ADD 1700000 TO THE EASTINGS, TO THE ABOVE AND BELOW VALUES.
 * DESCRIPTION PROVIDED BY VERMONT AGENCY OF TRANSPORTATION GEODETIC SURVEY UNIT

TRAVERSE TIES



* MAIN TRAVERSE COMPLETED : OCTOBER 21, 2001 BY R.GILMAN, P.WINTERS, T.WILSON, & D.BREER

ALIGNMENT TIES



* ALIGNMENT STAKED 05/22/03 by R. Gilman P.C. & P. Winters

DATUM	
VERTICAL	NAVD 88
HORIZONTAL	NAD-83 (96)
ADJUSTMENT	COMPASS

PROJECT NAME:	BARTON	PLOT DATE:	14-FEB-2005
PROJECT NUMBER:	BRO 1449(29)	PROJECT LEADER:	J. H. & R. B.
FILE NAME:	01j168/survey/xj168t1.dgn	DESIGNED BY:	CHECKED BY:
			R. O. W. SHEET II OF 13 SHEETS

Original Drawing - Ink on polymer meeting the requirements of 27 V.S.A. § 1403

STATE OF VERMONT
AGENCY OF TRANSPORTATION

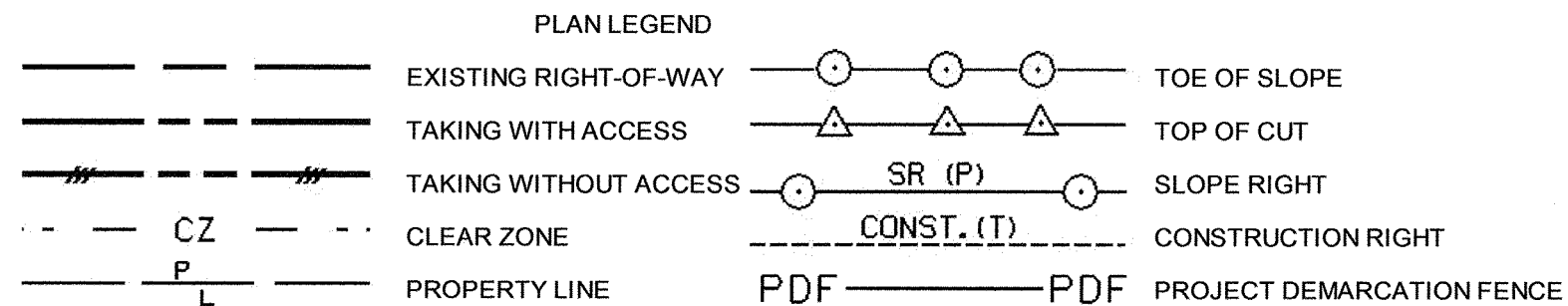
RIGHT - OF - WAY DETAIL SHEET

TABLE OF PROPERTY ACQUISITION

PARCEL NO.	PROPERTY OWNER	SHEET NO.	BEGINNING STATION	ENDING STATION	TAKE AREA±	REMAINDER AREA±	RIGHT			RECORDING DATA					REMARKS
							TYPE	(T)/(P)	AREA ±	TITLE	DATE	TOWN / CITY	BOOK	PAGE	
1	SMITH, DAVID V. & DEBORAH J.	13	5+51.65 LT.	5+74.95 LT.			CONST.	(T)	61 SF			BARTON			INCLUDES PDF
2	STATE OF VERMONT- AGENCY OF NATURAL RESOURCES DEPARTMENT OF FISH & WILDLIFE	13	4+46.1 RT. 5+25.00 RT. 5+48.74 RT. 5+33.71 RT.	6+00.00 RT. 8+82.47 RT.			CONST. UTILITY INSTALL	(T) (P) (P)	731 SF 0.14 A	QCD	04/19/13	BARTON	165	698-700	INCLUDES PDF & EC
			6+84.51 RT. 6+86.26 RT.	7+20.11 RT. 7+29.00 RT.			CONST. CHANNEL	(T) (P)	298 SF 279 SF						GUY WIRE DO NOT DISTURB GRANITE MONUMENT INCLUDES PDF & EC
			6+86.26 RT. 7+12.17 RT. 7+21.74 RT. 7+60.00 RT. 8+00.00 RT.	7+12.17 RT. 7+60.07 RT. 8+08.55 RT.			DRAINAGE CULVERT CONST. DRIVE INSTALL	(P) (P) (T) (T) (P)	354 SF						INCLUDES DROP INLET INCLUDES PDF 11' GRAVEL IN COMMON/TARBOX GUY WIRE
3A	BLODGETT, DAVID & NAULT, MILDRED	13	7+11.20 LT.	8+02.46 LT.	2345 SF							BARTON			TO BE TRANSFERRED TO FISH & WILDLIFE, DO NOT DISTURB - FENCE
3B		13	7+09.14 LT.	7+50.00 LT.	242 SF										
3C		13	7+09.14 CL.	8+02.46 LT.	2262 SF			ALL R.T. & I.							HWY. EASE. TH 3
4A	BLODGETT, DAVID & NAULT, MILDRED & STATE OF VERMONT- AGENCY OF NATURAL RESOURCES DEPARTMENT OF FISH & WILDLIFE	13	6+71.18 LT.	7+18.31 LT.	1071 SF					QCD	04/19/13	BARTON	165	695-697	(DISPUTED PARCEL) TO BE TRANSFER TO FISH & WILDLIFE
4B		13	6+70.56 LT.	7+11.20 LT.	292 SF										
4C		13	6+70.56 CL.	7+09.14 LT.	893 SF			ALL R.T. & I.							HWY. EASE. TH 3
5	VILLAGE OF ORLEANS, INC. & STATE OF VERMONT- AGENCY OF NATURAL RESOURCES DEPARTMENT OF FISH & WILDLIFE	13	6+24.13 LT. 6+24.13 LT. 6+26.14 LT.	6+42.42 LT. 6+42.42 LT. 6+31.41 LT.			CONST. DRAINAGE CHANNEL	(T) (P) (P)	176 SF 4 SF	QCD	04/26/13	BARTON	165	737-739	INCLUDES PDF (DISPUTED PARCEL)
6	VILLAGE OF ORLEANS, INC. (WATER & SEWER & ELECTRIC)														UTILITY
7	VERISON NEW ENGLAND, INC.														UTILITY
8	ADELPHIA TELECOMMUNICATIONS, INC.														UTILITY

TABLE OF REVISIONS

REVISION NO.	SHEET NO.	DESCRIPTION	DATE
1	12	PARCEL NO. 2 STATE OF VERMONT - AGENCY OF NATURAL RESOURCES DEPARTMENT OF FISH & WILDLIFE. CHANGE BEGINNING STA. OF CONST. (T) AT STA. 6+81.51 RT TO STA. 6+84.51 RT. CHANGE ENDING STA. OF CHANNEL (P) FROM STA. 7+39.00 RT. TO STA. 7+29.00 RT. MADE BY: MR PER C.O. 9446 APPROVED BY: RD	11/21/05
2	12	PARCEL NO. 3. BLODGETT. CHANGE AREA OF TAKING FOR PARCEL 3B FROM 150 SF± TO 242 SF±. MADE BY: MR PER C.O. 9447 APPROVED BY: RD	11/21/05



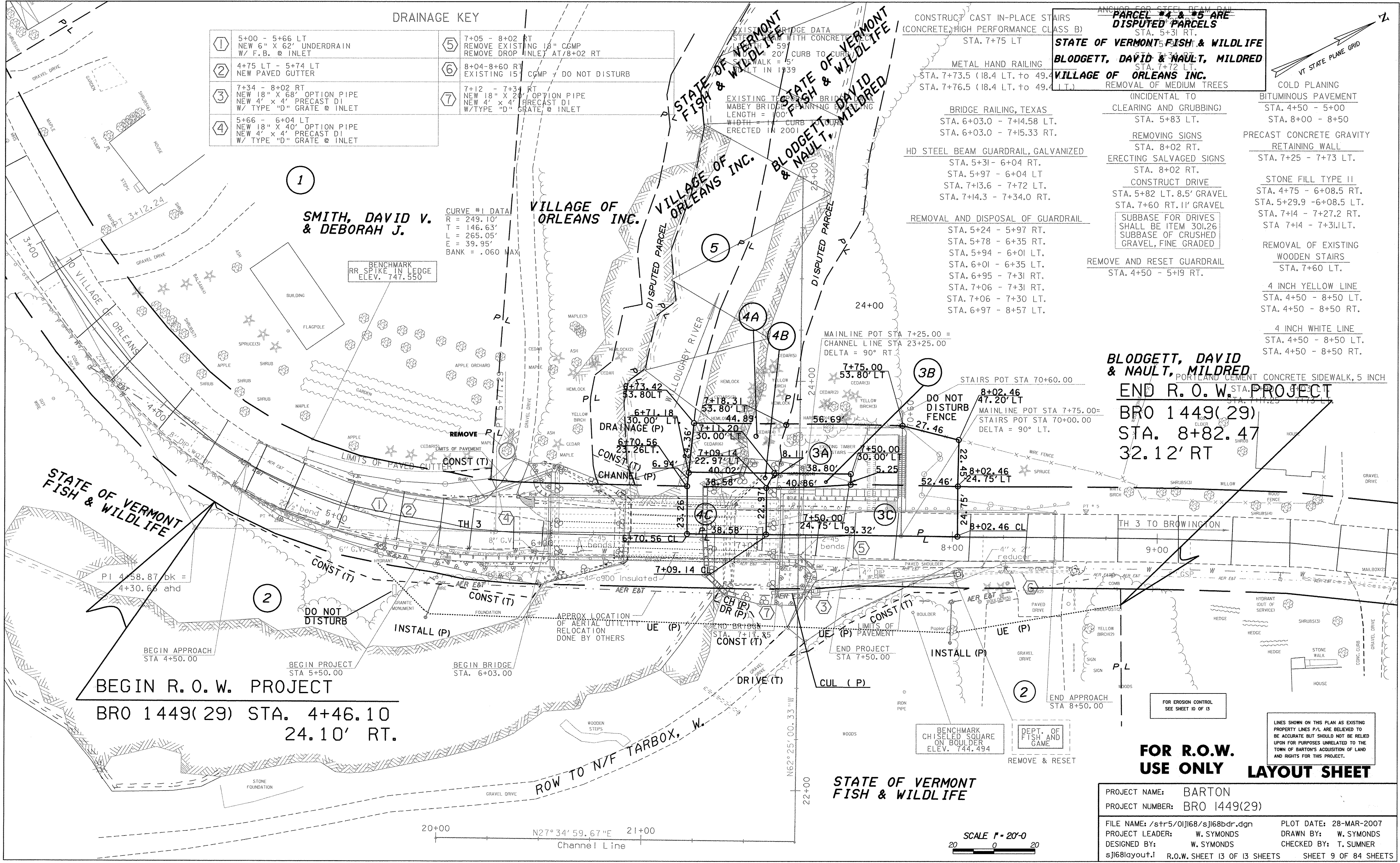
- EC -EROSION CONTROL
- (P) -PERMANENT
- (T) -TEMPORARY
- DR. -DRAINAGE RIGHT
- DIT. -DITCHING RIGHT
- CH. -CHANNEL RIGHT
- DRIVE -DRIVE RIGHT
- CUL. -CULVERT RIGHT
- C&T -CLEARING & TRIMMING RIGHT
- SR -SLOPE RIGHT
- UE -UTILITY EASEMENT

APPROVED: ROGER P. DUMAS DATE: 05-02-05
CHIEF, PLANS & TITLES

PLOT DATE 05/09/13

PROJECT NAME:	BARTON	PLOT DATE:	
PROJECT NUMBER:	BRO 1449(29)	DRAWN BY:	W. B. SYMONDS
FILE NAME:	01j168det.xls	CHECKED BY:	0
DESIGNED BY:	J. Reed	SHEET	8 OF 84
R.O.W. SHEET 12 OF 13			

Original Drawing - Ink on polymer meeting the requirements of 27 V.S.A. § 1403



DRAINAGE KEY

①	5+00 - 5+66 LT NEW 6" X 62' UNDERDRAIN W/ F.B. @ INLET	⑤	7+05 - 8+02 RT REMOVE EXISTING 18" CGMP REMOVE DROP INLET AT 7+02 RT
②	4+75 LT - 5+74 LT NEW PAVED GUTTER	⑥	8+04-8+60 RT EXISTING 15" CGMP - DO NOT DISTURB
③	7+34 - 8+02 RT NEW 18" X 68' OPTION PIPE NEW 4' X 4' PRECAST DI W/ TYPE "D" GRATE @ INLET	⑦	7+12 - 7+31 RT NEW 18" X 24' OPTION PIPE NEW 4' X 4' PRECAST DI W/ TYPE "D" GRATE @ INLET
④	5+66 - 6+04 LT NEW 18" X 40' OPTION PIPE NEW 4' X 4' PRECAST DI W/ TYPE "D" GRATE @ INLET		

CURVE #1 DATA
 R = 249.10'
 T = 146.63'
 L = 265.05'
 E = 39.95'
 BANK = .060 MAX

PARCEL #4 & #5 ARE DISPUTED PARCELS
 STA. 5+31 RT.
STATE OF VERMONT FISH & WILDLIFE
BLODGETT, DAVID & NAULT, MILDRED
 VILLAGE OF ORLEANS INC.
 REMOVAL OF MEDIUM TREES
 (INCIDENTAL TO CLEARING AND GRUBBING)
 STA. 5+83 LT.

CONSTRUCT CAST IN-PLACE STAIRS
 (CONCRETE) HIGH PERFORMANCE CLASS B)
 STA. 7+75 LT
 METAL HAND RAILING
 STA. 7+73.5 (18.4 LT. to 49.4 LT.)
 STA. 7+76.5 (18.4 LT. to 49.4 LT.)

BRIDGE RAILING, TEXAS
 STA. 6+03.0 - 7+14.58 LT.
 STA. 6+03.0 - 7+15.33 RT.
 HD STEEL BEAM GUARDRAIL, GALVANIZED
 STA. 5+31- 6+04 RT.
 STA. 5+97 - 6+04 LT
 STA. 7+13.6 - 7+72 LT.
 STA. 7+14.3 - 7+34.0 RT.

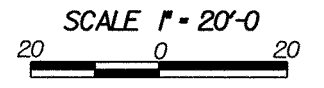
REMOVAL AND DISPOSAL OF GUARDRAIL
 STA. 5+24 - 5+97 RT.
 STA. 5+78 - 6+35 RT.
 STA. 5+94 - 6+01 LT.
 STA. 6+01 - 6+35 LT.
 STA. 6+95 - 7+31 RT.
 STA. 7+06 - 7+31 RT.
 STA. 7+06 - 7+30 LT.
 STA. 6+97 - 8+57 LT.

COLD PLANING
 BITUMINOUS PAVEMENT
 STA. 4+50 - 5+00
 STA. 8+00 - 8+50
 PRECAST CONCRETE GRAVITY
 RETAINING WALL
 STA. 7+25 - 7+73 LT.
 STONE FILL TYPE II
 STA. 4+75 - 6+08.5 RT.
 STA. 5+29.9 - 6+08.5 LT.
 STA. 7+14 - 7+27.2 RT.
 STA. 7+14 - 7+31 LT.
 REMOVAL OF EXISTING
 WOODEN STAIRS
 STA. 7+60 LT.
 4 INCH YELLOW LINE
 STA. 4+50 - 8+50 LT.
 STA. 4+50 - 8+50 RT.
 4 INCH WHITE LINE
 STA. 4+50 - 8+50 LT.
 STA. 4+50 - 8+50 RT.

BLODGETT, DAVID & NAULT, MILDRED
 PORTLAND CEMENT CONCRETE SIDEWALK, 5 INCH
END R. O. W. PROJECT
BR0 1449(29)
STA. 8+82.47
32.12' RT

FOR R.O.W. USE ONLY LAYOUT SHEET

PROJECT NAME:	BARTON	PLOT DATE:	28-MAR-2007
PROJECT NUMBER:	BR0 1449(29)	DESIGNED BY:	W. SYMONDS
FILE NAME:	/str5/01j68/sj168bdr.dgn	CHECKED BY:	T. SUMNER
PROJECT LEADER:	W. SYMONDS	DESIGNED BY:	W. SYMONDS
DESIGNED BY:	W. SYMONDS	CHECKED BY:	T. SUMNER
sj168layout.l	R.O.W. SHEET 13 OF 13 SHEETS		SHEET 9 OF 84 SHEETS



20+00 N27°34'59.67"E 21+00
 Channel Line