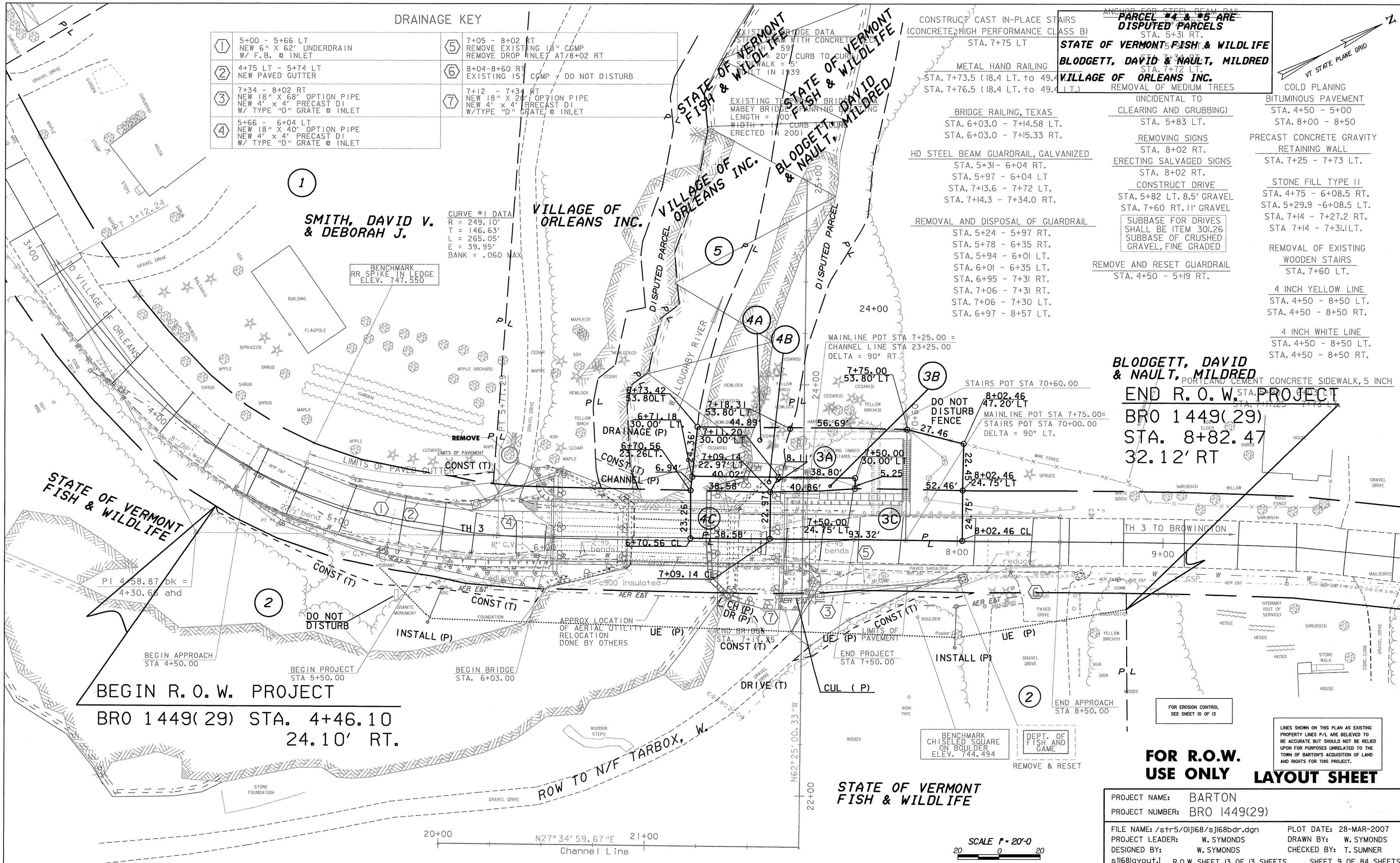


Original Drawing - Ink on polymer meeting the requirements of 27 V.S.A. § 1403



**DRAINAGE KEY**

①	5+00 - 5+66 LT NEW 6" X 62' UNDERDRAIN W/ F.B. @ INLET	⑤	7+05 - 8+02 RT REMOVE EXISTING 18" CGMP REMOVE DROP INLET AT 7+02 RT
②	4+75 LT - 5+74 LT NEW PAVED GUTTER	⑥	8+04-8+60 RT CGMP - DO NOT DISTURB
③	7+34 - 8+02 RT NEW 18" X 68' OPTION PIPE NEW 4' X 4' PRECAST DI W/ TYPE "D" GRATE @ INLET	⑦	7+12 - 7+31 RT NEW 18" X 24' OPTION PIPE NEW 4' X 4' PRECAST DI W/ TYPE "D" GRATE @ INLET
④	5+66 - 6+04 LT NEW 18" X 40' OPTION PIPE NEW 4' X 4' PRECAST DI W/ TYPE "D" GRATE @ INLET		

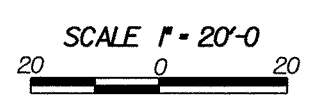
**CURVE #1 DATA**  
 R = 249.10'  
 T = 146.63'  
 L = 265.05'  
 E = 39.95'  
 BANK = .060 MAX

- CONSTRUCT CAST-IN-PLACE STAIRS (CONCRETE) HIGH PERFORMANCE CLASS B)**  
 STA. 7+75 LT
- METAL HAND RAILING**  
 STA. 7+73.5 (18.4 LT. to 49.4 LT.)  
 STA. 7+76.5 (18.4 LT. to 49.4 LT.)
- BRIDGE RAILING, TEXAS**  
 STA. 6+03.0 - 7+14.58 LT.  
 STA. 6+03.0 - 7+15.33 RT.
- HD STEEL BEAM GUARDRAIL, GALVANIZED**  
 STA. 5+31 - 6+04 RT.  
 STA. 5+97 - 6+04 LT  
 STA. 7+13.6 - 7+72 LT.  
 STA. 7+14.3 - 7+34.0 RT.
- REMOVAL AND DISPOSAL OF GUARDRAIL**  
 STA. 5+24 - 5+97 RT.  
 STA. 5+78 - 6+35 RT.  
 STA. 5+94 - 6+01 LT.  
 STA. 6+01 - 6+35 LT.  
 STA. 6+95 - 7+31 RT.  
 STA. 7+06 - 7+31 RT.  
 STA. 7+06 - 7+30 LT.  
 STA. 6+97 - 8+57 LT.
- REMOVE AND RESET GUARDRAIL**  
 STA. 4+50 - 5+19 RT.
- ANCHOR FOR STEEL BEAM RAIL**  
**PARCEL #4 & #5 ARE DISPUTED PARCELS**  
 STA. 5+31 RT.
- STATE OF VERMONT FISH & WILDLIFE BLODGETT, DAVID & NAULT, MILDRED VILLAGE OF ORLEANS INC.**  
 STA. 7+72 LT.  
 REMOVAL OF MEDIUM TREES (INCIDENTAL TO CLEARING AND GRUBBING)  
 STA. 5+83 LT.
- REMOVING SIGNS**  
 STA. 8+02 RT.
- ERECTING SALVAGED SIGNS**  
 STA. 8+02 RT.
- CONSTRUCT DRIVE**  
 STA. 5+82 LT. 8.5' GRAVEL  
 STA. 7+60 RT. 11' GRAVEL
- SUBBASE FOR DRIVES SHALL BE ITEM 30L26 SUBBASE OF CRUSHED GRAVEL, FINE GRADED**
- REMOVE AND RESET GUARDRAIL**  
 STA. 4+50 - 5+19 RT.
- COLD PLANING BITUMINOUS PAVEMENT**  
 STA. 4+50 - 5+00  
 STA. 8+00 - 8+50
- PRECAST CONCRETE GRAVITY RETAINING WALL**  
 STA. 7+25 - 7+73 LT.
- STONE FILL TYPE II**  
 STA. 4+75 - 6+08.5 RT.  
 STA. 5+29.9 - 6+08.5 LT.  
 STA. 7+14 - 7+27.2 RT.  
 STA. 7+14 - 7+31 LT.
- REMOVAL OF EXISTING WOODEN STAIRS**  
 STA. 7+60 LT.
- 4 INCH YELLOW LINE**  
 STA. 4+50 - 8+50 LT.  
 STA. 4+50 - 8+50 RT.
- 4 INCH WHITE LINE**  
 STA. 4+50 - 8+50 LT.  
 STA. 4+50 - 8+50 RT.

**BLODGETT, DAVID & NAULT, MILDRED**  
 PORTLAND CEMENT CONCRETE SIDEWALK, 5 INCH  
**END R. O. W. PROJECT**  
 BRO 1449(29)  
 STA. 8+82.47  
 32.12' RT

**FOR R.O.W. USE ONLY LAYOUT SHEET**

PROJECT NAME:	BARTON	PLOT DATE:	28-MAR-2007
PROJECT NUMBER:	BRO 1449(29)	DESIGNED BY:	W. SYMONDS
FILE NAME:	/str5/01j68/sj168bdr.dgn	CHECKED BY:	T. SUMNER
PROJECT LEADER:	W. SYMONDS	DESIGNED BY:	W. SYMONDS
DESIGNED BY:	W. SYMONDS	CHECKED BY:	T. SUMNER
sj168layout.l	R.O.W. SHEET 13 OF 13 SHEETS		SHEET 9 OF 84 SHEETS



20+00 N27°34'59.67"E 21+00  
 Channel Line