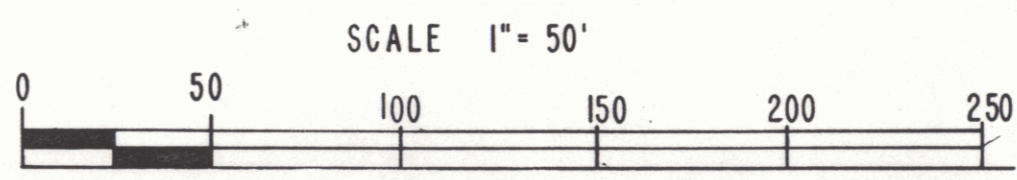
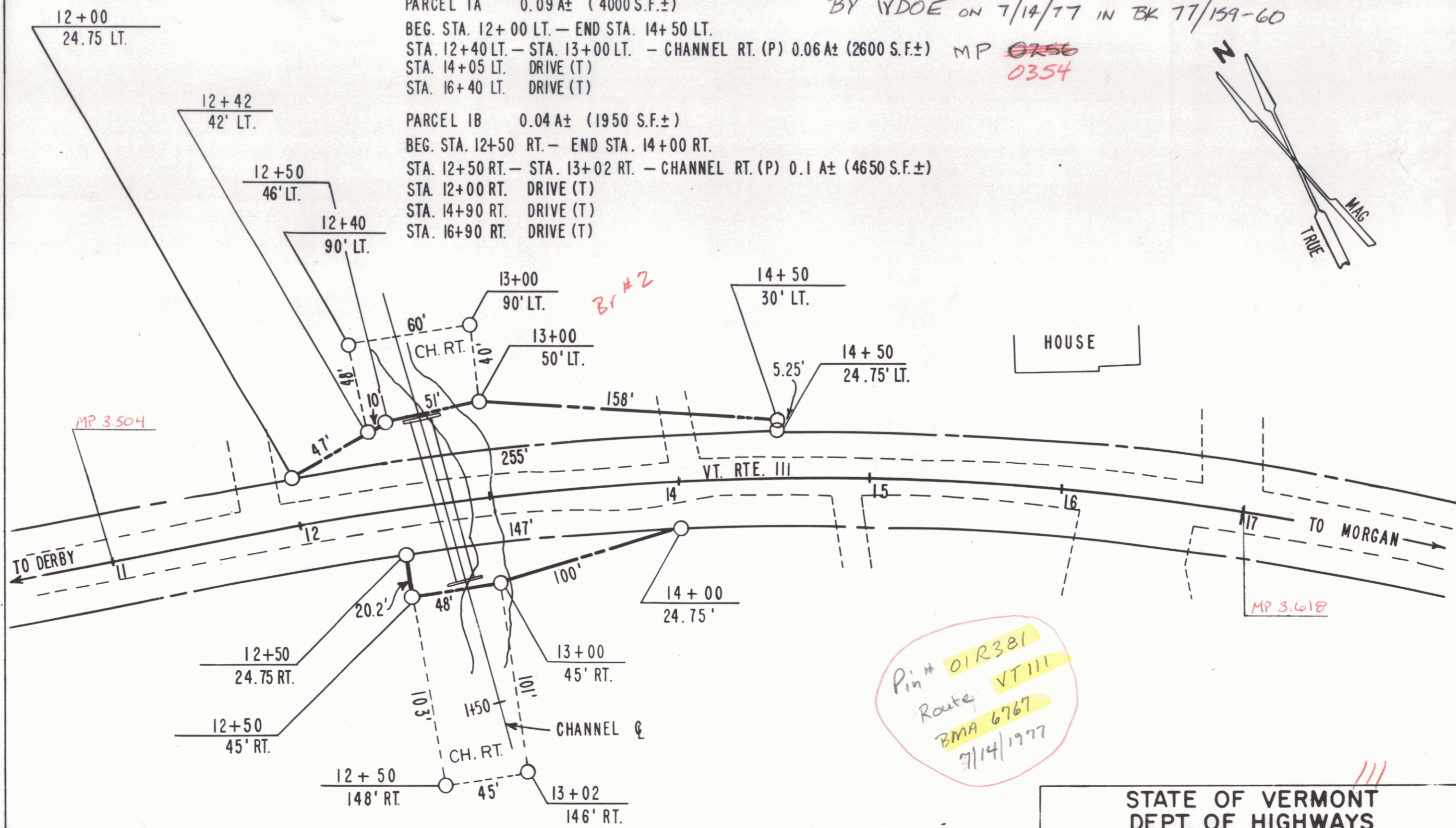
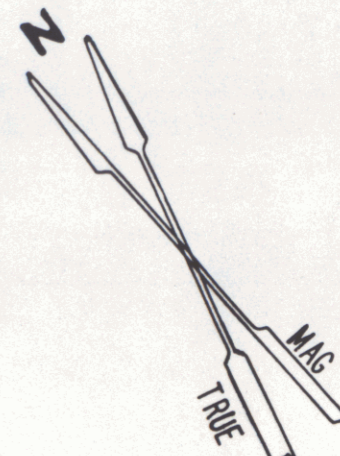


DAGGETT, DAVID F. & CLAIRE M.
 PARCEL IA 0.09 A± (4000 S.F.±)
 BEG. STA. 12+00 LT. — END STA. 14+50 LT.
 STA. 12+40 LT. — STA. 13+00 LT. — CHANNEL RT. (P) 0.06 A± (2600 S.F.±) MP ~~0256~~
 STA. 14+05 LT. DRIVE (T) 0354
 STA. 16+40 LT. DRIVE (T)

PARCEL IB 0.04 A± (1950 S.F.±)
 BEG. STA. 12+50 RT. — END STA. 14+00 RT.
 STA. 12+50 RT. — STA. 13+02 RT. — CHANNEL RT. (P) 0.1 A± (4650 S.F.±)
 STA. 12+00 RT. DRIVE (T)
 STA. 14+90 RT. DRIVE (T)
 STA. 16+90 RT. DRIVE (T)

STATE OF VERMONT ^{from} TO DAVID AND CLAIRE DAGGETT
 BY VDOE ON 7/14/77 IN BK 77/159-60



STATE OF VERMONT DEPT. OF HIGHWAYS		
SHEET 1		
TOWN OF DERBY		
PROJECT	DERBY	BMA 6767
APPROX. SCALE 1" = 50'	DATE 3-17-77	DRAWN BY KDP