

INDEX OF SHEETS

SHEET NO.	TITLE PAGE
2-24	TYPICAL CROSS SECTION OF IMPROVEMENT
3	QUANTITY SHEET (DRAINAGE)
4	QUANTITY SHEET (TERR)
5	EXISTING SHEET
6-12	PLAN AND PROFILE SHEETS
13-17	DETAILS, BRIDGE (UNDERPASS)
18	STANDARD STRUCTURE SHEET S-40 (BARRICADES SIGNS AND LIGHTS) ROADWAY
19	STANDARD STRUCTURE SHEET S-11 (BARRICADES SIGNS AND LIGHTS) BRIDGE
20	CONSTRUCTION DETAILS CD-1 (DITCHES)
21	CONSTRUCTION DETAILS CD-2 (TYPICAL GRADING)
22	CONSTRUCTION DETAILS CD-4 (GRANITE CURB)
23	STANDARD STRUCTURE SHEET S-48-N (TRUSS CABLE GUARD RAIL WITH STEEL POSTS)
24	STANDARD STRUCTURE SHEET S-53-N (PRECAST REINFORCED CONCRETE PIPE CATCH BASINS)
25-26	CROSS SECTIONS

STANDARD STRUCTURE SHEET APPROVED BY THE CHIEF ENGINEER, VERMONT STATE DEPARTMENT OF HIGHWAYS  
S-40 JUNE 16, 1936

STATE OF VERMONT  
STATE HIGHWAY DEPARTMENT

PLAN AND PROFILE OF PROPOSED  
STATE HIGHWAY

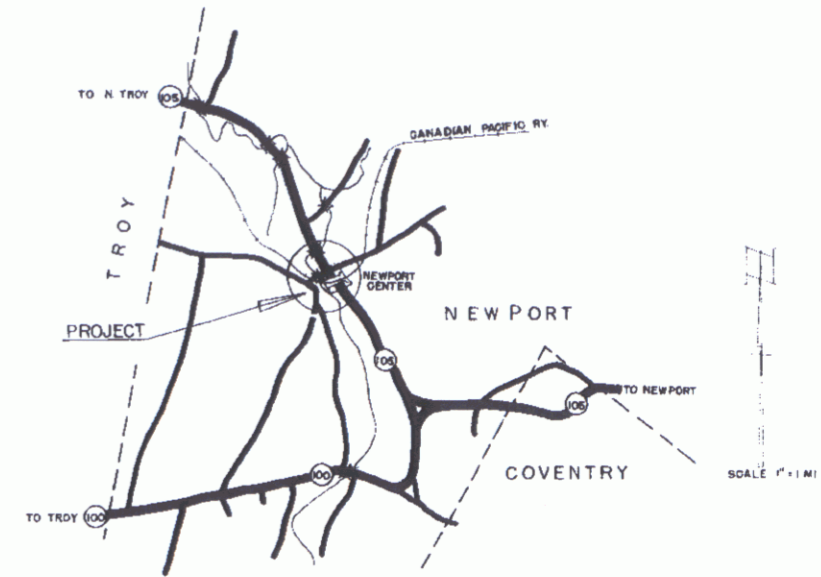
FEDERAL GRADE

TOWN OF NEWPORT  
COUNTY OF ORLEANS  
VERMONT ROUTE 105  
NEWPORT-NORTH TROY ROAD

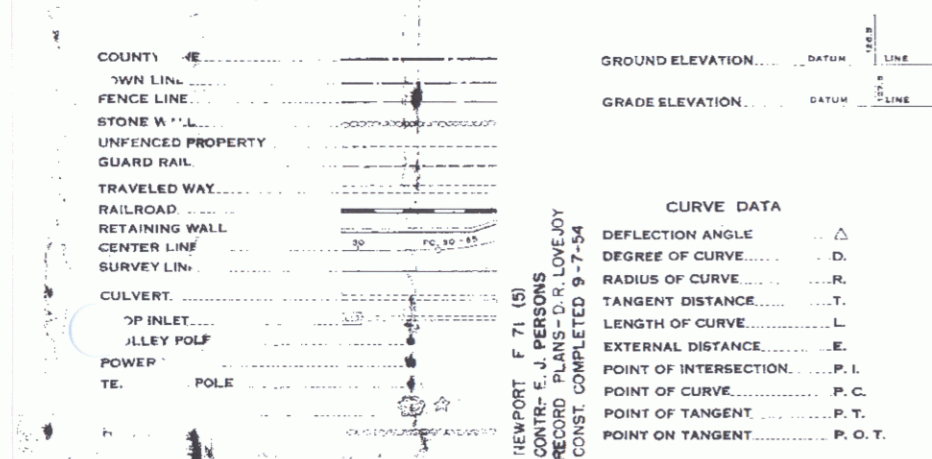
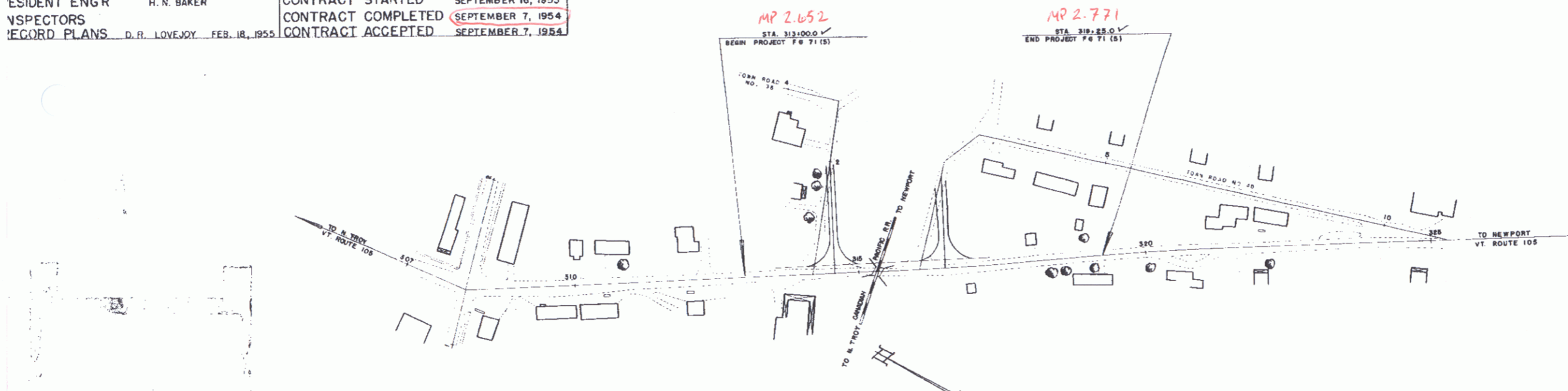
BEGINNING AT A POINT APPROXIMATELY 14,122 FEET SOUTHEAST OF THE TROY-NEWPORT TOWN LINE AND EXTENDING SOUTHEASTERLY 6250 FEET

LENGTH OF PROJECT 6250 FT. • 0.116 MI.

FED. ROAD DIST. NO.	STATE	PROJ. NO.	FISCAL YEAR	AMOUNT	TOTAL
7	VT.	71(5)	1953	1	24



PROJECT NAME & NUMBER	TYPE	PAVEMENT AREA
NEWPORT 71(5)	IMP. SURF. COPE	1760 S.Y.
RECORD PLANS		
MATERIALS		
UB-BASE OF GRAVEL } MILL-KER PIT, LEAFORT	STRUCT. STEEL } BETHLEHEM STEEL CO. BETHLEHEM, PENN.	
UB-BASE OF SAND	RF INF. STEEL	
R. GRAVEL } NADEAU SAND & GR. CO. JOHNSON	ACCGMP NEW ENG. MET. CULV. CO., BOSTON, MASS.	
PIP AGGREGATES	RCP VT. CONC. PIPE CORP., WINDSOR	
ONC. AGGREGATES	CUTBACK ASPHALT ESSO CO., EVERETT, MASS.	
EMER. E. LONE STAR PORT. CEM. CO. HUDSON, N. Y.		
CONTRACTOR E. J. PERSONS, NEWPORT	CONTRACT DATED SEPTEMBER 2, 1953	
RESIDENT ENGR. H. N. BAKER	CONTRACT STARTED SEPTEMBER 16, 1953	
SUPERVISOR	CONTRACT COMPLETED SEPTEMBER 7, 1954	
RECORD PLANS D. R. LOVEJOY, FEB. 18, 1955	CONTRACT ACCEPTED SEPTEMBER 7, 1954	



CURVE DATA

DEFLECTION ANGLE	...
DEGREE OF CURVE	...
RADIUS OF CURVE	...
TANGENT DISTANCE	...
LENGTH OF CURVE	...
EXTERNAL DISTANCE	...
POINT OF INTERSECTION	...
POINT OF CURVE	...
POINT OF TANGENT	...
POINT ON TANGENT	...

SCALES

TITLE	1" = 100'
TYPICAL	1" = 20'
PLAN	1" = 20'
PROFILE HORIZONTAL	1" = 20'
PROFILE VERTICAL	1" = 10'
CROSS SECTIONS	1" = 5'

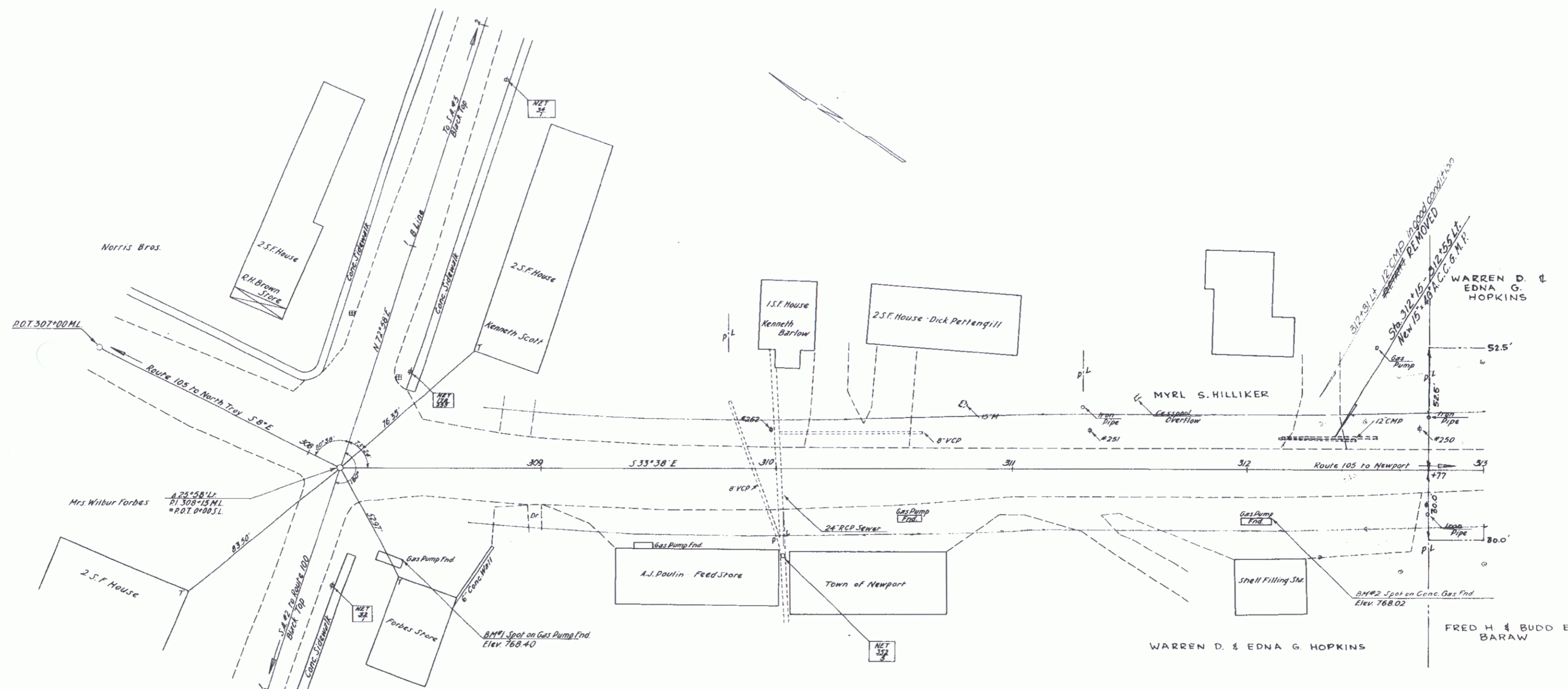
APPROVED: JULY 7 1953  
*H.E. Sargent*  
CHIEF ENGINEER  
SUBMITTED BY ORDER OF THE STATE HIGHWAY BOARD

Pin # 01R346

THESE PLANS ARE SUBJECT TO SUCH REVISIONS AS MAY BE REQUIRED BY THE BUREAU OF PUBLIC ROADS OR THE COMMISSIONER OF HIGHWAYS.  
CONSTRUCTION IS TO BE CARRIED ON IN ACCORDANCE WITH THE PLANS AND THE STANDARD ROAD AND BRIDGE SPECIFICATIONS OF 1948, AS APPROVED JULY 25 1949 BY THE BUREAU OF PUBLIC ROADS INCLUDING ALL SUBSEQUENT APPROVED REVISIONS AND SUCH REVISED SPECIFICATIONS AND SPECIAL PROVISIONS AS ARE SUBMITTED WITH THE PLANS.

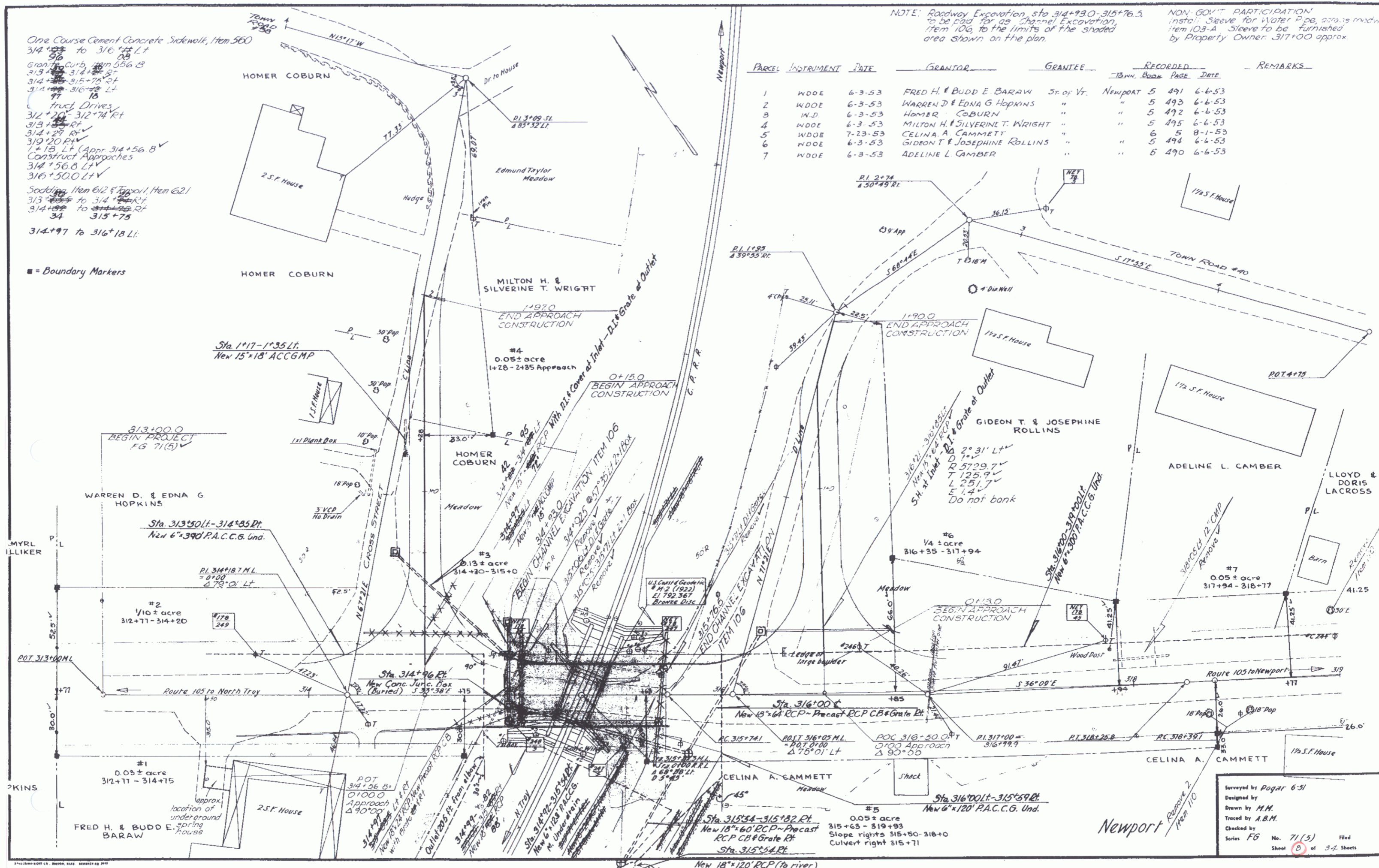
DEPARTMENT OF COMMERCE  
BUREAU OF PUBLIC ROADS  
APPROVED: \_\_\_\_\_  
DISTRICT ENGINEER

APPROVED: _____ CONSTRUCTION ENGINEER	APPROVED: _____ BRIDGE ENGINEER	APPROVED: JULY 7 1953 <i>H. N. Baker</i> HIGHWAY ENGINEER	APPROVED: _____ DISTRICT ENGINEER	PROJECT: FG No. 71 (5) FILED SHEET 1 OF 24
--	------------------------------------	---	--------------------------------------	---



Newport Ctr

Surveyed by	Pogor 6-51
Designed by	
Drawn by	M.M.
Traced by	A.B.M.
Checked by	
Series	FG
No.	71(3)
Filed	
Sheet	2 of 56 Sheets



One Course Cement Concrete Sidewalk, Item 560  
 314+99.0 to 316+99.0 Lt  
 516  
 Granite Curb, Item 556 B  
 313+99.0 to 314+99.0 Rt  
 314+99.0 to 315+76.5 Lt  
 314+99.0 to 316+99.0 Lt  
 77.70  
 10  
 Truss Drives  
 312+20.0 to 312+74.0 Rt  
 313+99.0 Rt  
 314+99.0 Rt  
 319+20.0 Rt  
 1+15 Lt (Appro. 314+56.8)  
 Construct Approaches  
 314+56.8 Lt  
 316+50.0 Lt  
 Sodding, Item 612 & Topsoil, Item 621  
 313+99.0 to 314+99.0 Rt  
 314+99.0 to 315+76.5 Lt  
 34  
 314+99.0 to 316+18.0 Lt

■ = Boundary Markers

NOTE: Roadway Excavation, Sta. 314+99.0-315+76.5 to be paid for as Channel Excavation, Item 106, to the limits of the shaded area shown on the plan.

NON-GOV'T PARTICIPATION  
 Install Sleeve for Water Pipe, 200.00 max. from 103-A. Sleeve to be furnished by Property Owner. 317+00 approx.

PARCEL	INSTRUMENT	DATE	GRANTOR	GRANTEE	RECORDED	REMARKS
					—Town Book Page Date—	
1	WDOE	6-3-53	FRED H. & BUDD E. BARAW	Sr. of Yr.	Newport 5 491	6-6-53
2	WDOE	6-3-53	WARREN D. & EDNA G. HOPKINS	"	" 5 493	6-6-53
3	W.D.	6-3-53	HOMER COBURN	"	" 5 492	6-6-53
4	WDOE	6-3-53	MILTON H. & SILVERINE T. WRIGHT	"	" 5 495	6-6-53
5	WDOE	7-23-53	CELINA A. CAMMETT	"	6 5	8-1-53
6	WDOE	6-3-53	GIDEON T. & JOSEPHINE ROLLINS	"	" 5 494	6-6-53
7	WDOE	6-3-53	ADELINE L. CAMBER	"	" 5 490	6-6-53

Surveyed by Pogor 6-51  
 Designed by  
 Drawn by M.H.  
 Traced by A.B.H.  
 Checked by  
 Series FG No. 71(5) Filed  
 Sheet 8 of 3-2 Sheets

