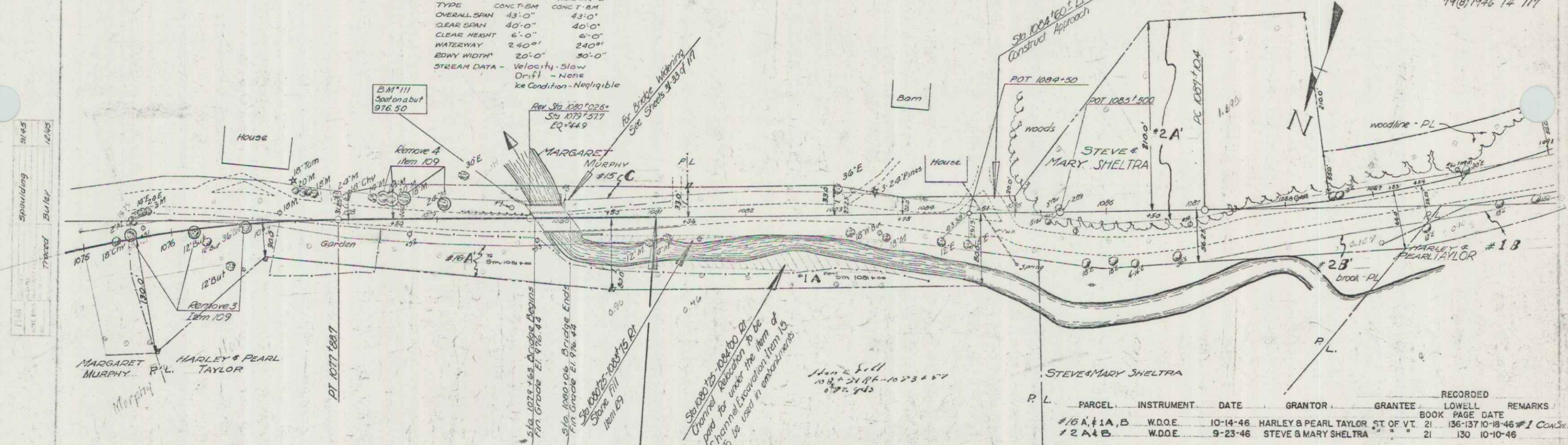


BRIDGE CONTRACTED  
 BY MARGARET MURPHY  
 1077 1078 1079

BRIDGE DATA NEW CONSTRUCTION  
 OLD WIDENING OF

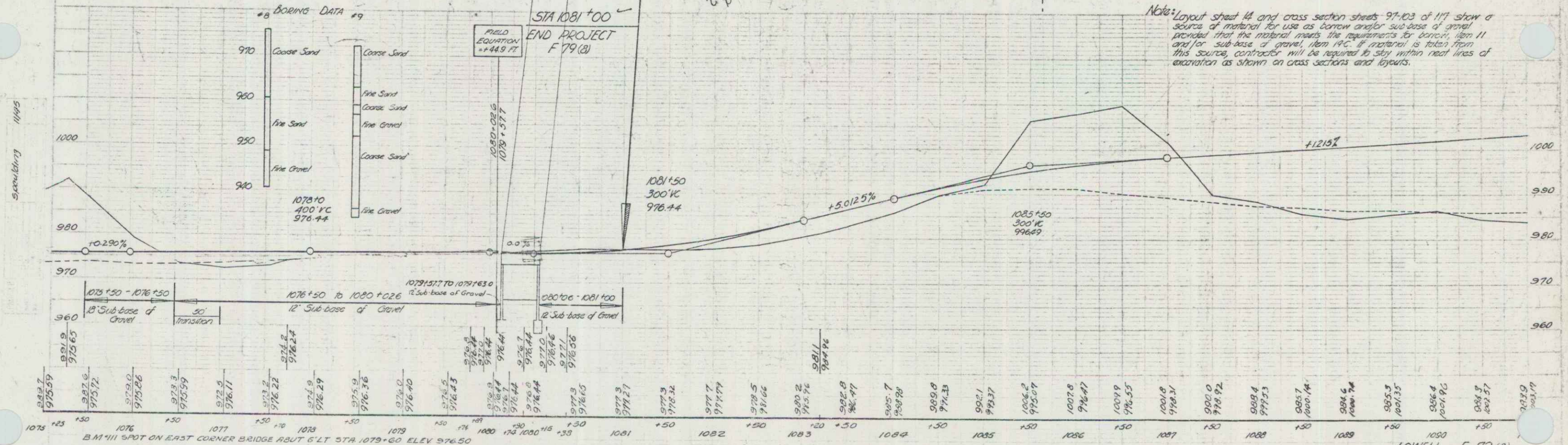
TYPE	CONC.T-BM	CONC.T-BM
OVERALL SPAN	43'-0"	43'-0"
CLEAR SPAN	40'-0"	40'-0"
CLEAR HEIGHT	6'-0"	6'-0"
WATERWAY	24'-0"	24'-0"
BODY WIDTH	20'-0"	50'-0"
STREAM DATA	Velocity - Slow	
	Drift - None	
	Ice Condition - Negligible	

79(8)1946 14 117



P. L.	PARCEL	INSTRUMENT	DATE	GRANTOR	GRANTEE	RECORDED	LOWELL	REMARKS
	#16 A, #1A, B	W.D.O.E.	10-14-46	HARLEY & PEARL TAYLOR	ST. OF VT.	21	136-137	10-18-46 #1 Con. S. 17
	#2 A, B	W.D.O.E.	9-23-46	STEVE & MARY SHELTRA		21	130	10-10-46

Note: Layout sheet 14 and cross section sheets 97-103 of 117 show a source of material for use as borrow and/or sub-base of gravel provided that the material meets the requirements for borrow, item 11 and for sub-base of gravel, item 14C. If material is taken from this source, contractor will be required to stay within neat lines of excavation as shown on cross sections and layouts.



B.M. #111 SPOT ON EAST CORNER BRIDGE ABUT 5' LT STA. 1079+60 ELEV. 976.50

LOWELL F 79 (8)  
 Sheet 14 of 117 Sheets