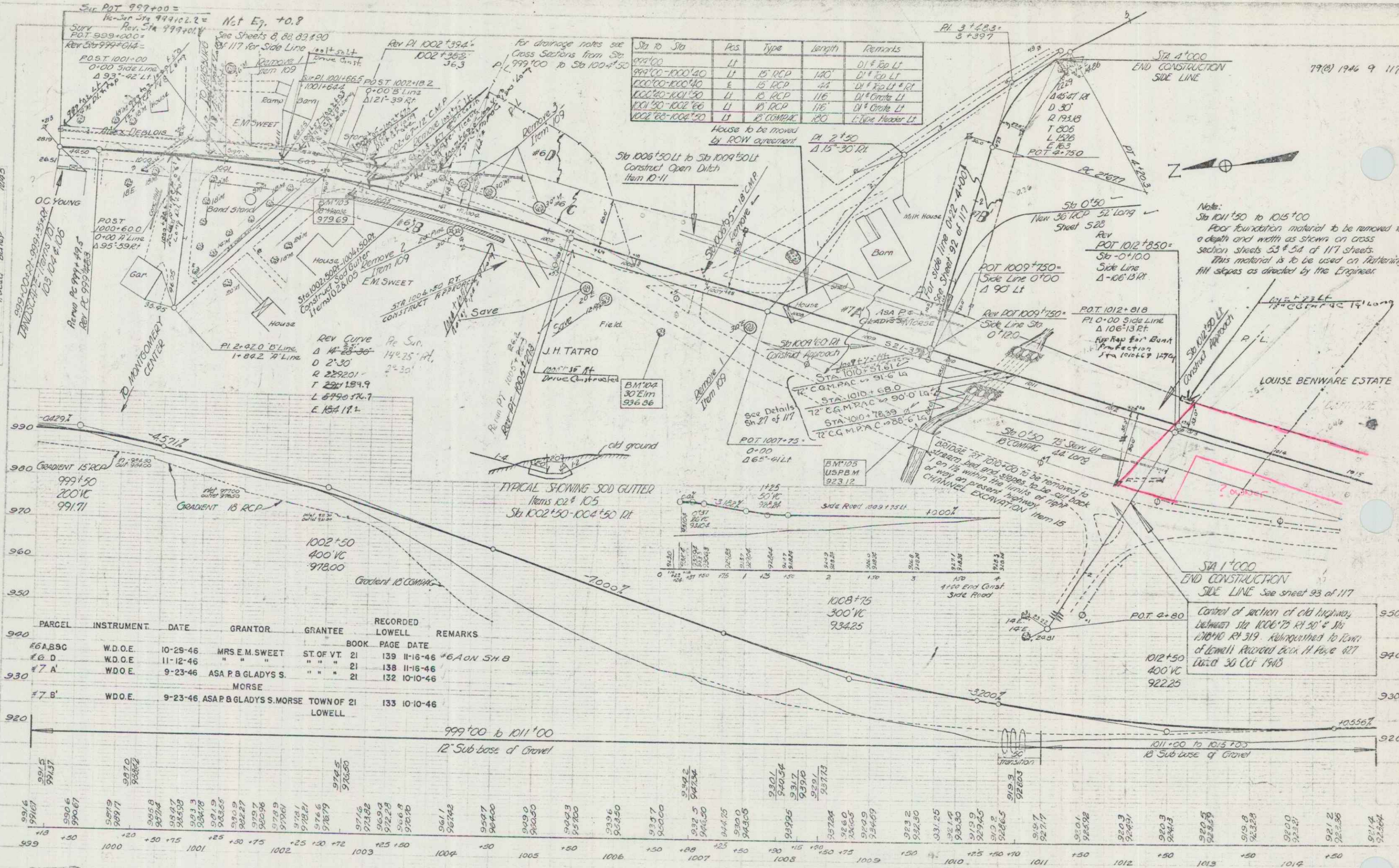
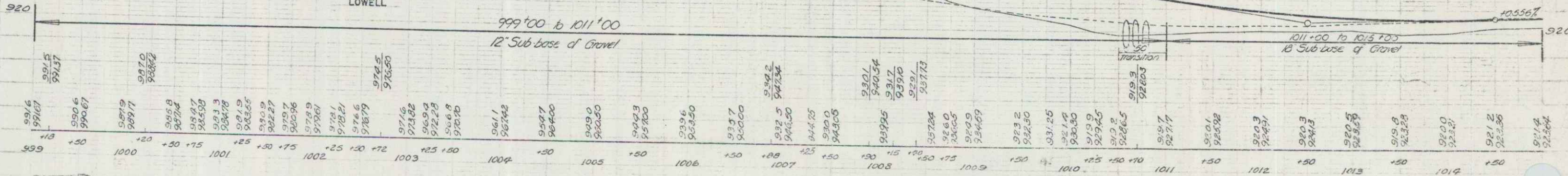


79(2) 1946 9 117

Sta to Sta	Pos	Type	Length	Remarks
999+00	LI	15' RCP	140'	D1 4' 60' LT
999+00-1000+40	LI	15' RCP	40'	D1 4' 60' LT
1000+00-1000+40	E	15' RCP	40'	D1 4' 60' LT
1000+40-1001+50	LI	15' RCP	110'	D1 4' 60' LT
1001+50-1002+00	LI	15' RCP	50'	D1 4' 60' LT
1002+00-1004+50	LI	15' COMPACT	250'	L-Type Header LT



PARCEL	INSTRUMENT	DATE	GRANTOR	GRANTEE	RECORDED LOWELL	REMARKS
#6 A.B.C.	W.D.O.E.	10-29-46	MRS E.M. SWEET	ST. OF VT	21 139 11-16-46	#6 A ON SH B
#6 D	W.D.O.E.	11-12-46	"	"	21 138 11-16-46	"
#7 A	W.D.O.E.	9-23-46	ASA P.B. GLADYS S.	"	21 132 10-10-46	"
#7 B	W.D.O.E.	9-23-46	ASA P.B. GLADYS S. MORSE	TOWN OF 21	133 10-10-46	LOWELL



Note:
Sta 1011+50 to 1015+00
Floor foundation material to be removed to a depth and width as shown on cross section sheets 53 & 54 of 117 sheets.
This material is to be used on hatching fill slopes as directed by the Engineer.

Control of section of old highway between Sta 1006+75 R/L 30' & Sta 1010+40 R/L 319' Relinquished to Town of Lowell Received Dec 11th Page 117 Dated 30 Oct 1946

LOWELL F 75
Sheet 9 of 117 Sheets