

FED. ROAD DIST. NO.	STATE	F. PROJ. NO.	FISCAL YEAR	SHEET NO.	TOT. SHEETS
9	Vt.	116 (7)		1	16

INDEX OF SHEETS

SHEET NO. 1	TITLE PAGE
" 2	TYPICAL CROSS-SECTION OF IMPROVEMENT - LUMINOUS CONCRETE PAVEMENT ITEM 361-B
" 3	BANKING AND WIDENING TABLES
" 4	PLAN AND PROFILE
" 5	EARTHWORK AND DETAILED QUANTITIES
" 6	DETAILS OF SUPERSTRUCTURE
" 7	DETAILS OF ABUTMENT NO. 1
" 8	" 2
" 9	STANDARD STRUCTURE SHEET SB-5 CABLE GUARD RAIL (REV. OCT. 31, 1930)
" 10	" SB-11 BARRICADES, SIGNS AND LIGHTS (BRIDGE)
" 11	" SB-20 STANDARD DETAILS
" 12	" S-40 BARRICADES, SIGNS AND LIGHTS (ROADWAY)
" 13	" S-46-45 BOUNDARY MARKERS
" 14	" S-48-46 THREE CABLE GUARD RAIL
" 15-16	CROSS SECTIONS

STANDARD STRUCTURE SHEETS APPROVED BY THE CHIEF ENGINEER, VERMONT STATE DEPARTMENT OF HIGHWAYS.

S-40 MAY 13, 1946
S-48-46 DEC. 18, 1945

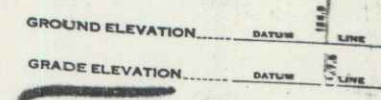
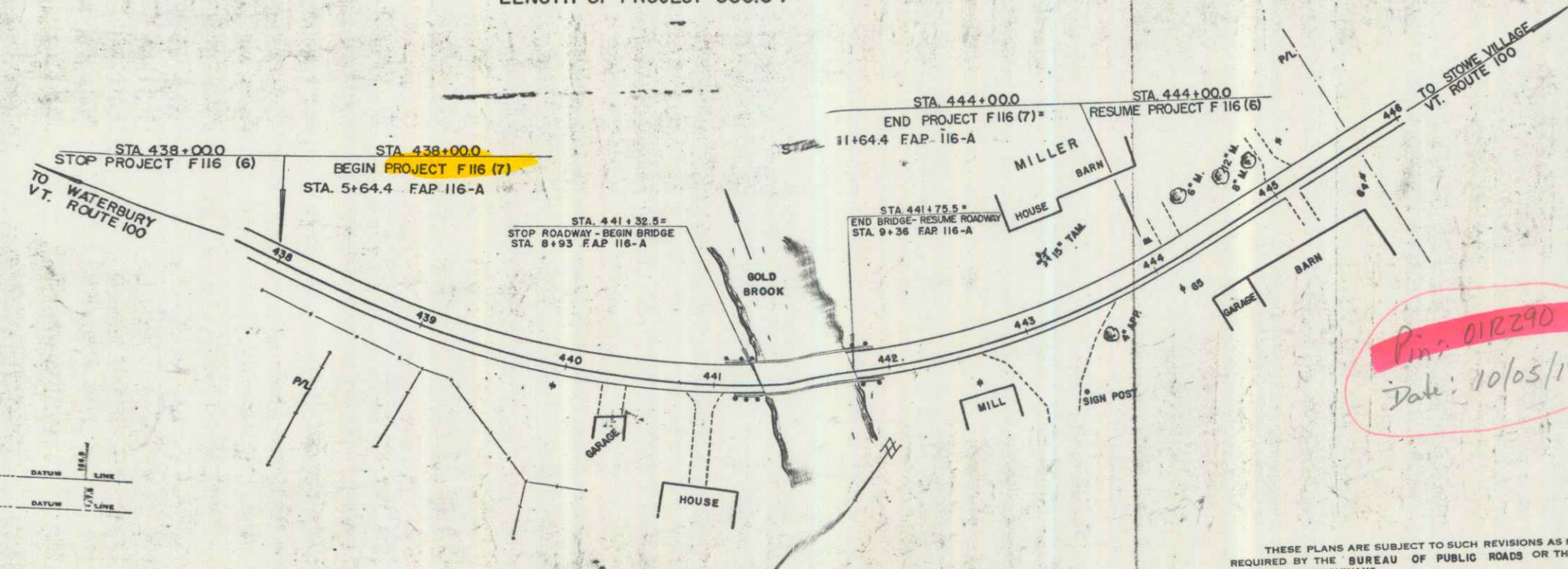
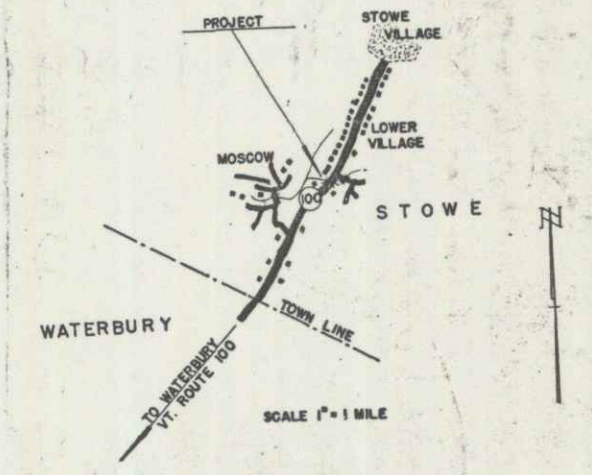
STATE OF VERMONT
STATE HIGHWAY DEPARTMENT

PLAN AND PROFILE OF PROPOSED
STATE HIGHWAY

FEDERAL PROJECT
TOWN OF STOWE
GOLD BROOK BRIDGE
VERMONT ROUTE 100

BRIDGE OVER GOLD BROOK, 7,707.6 FEET NORTHERLY OF THE WATERBURY-STOWE TOWN LINE.

LENGTH OF BRIDGE - 43.0 FT = 0.008 MILE
LENGTH OF ROADWAY - 557.0 FT = 0.106 MILE
LENGTH OF PROJECT - 600.0 FT = 0.114 MILE



CURVE DATA

DEFLECTION ANGLE	Δ
DEGREE OF CURVE	D
RADIUS OF CURVE	R
TANGENT DISTANCE	T
LENGTH OF CURVE	L
EXTERNAL DISTANCE	E
POINT OF INTERSECTION	P. I.
POINT OF CURVE	P. C.
POINT OF TANGENT	P. T.
POINT ON TANGENT	P. O. T.

SCALES

TITLE	1" = 50'
TYPICAL	1" = 2'
PLAN	1" = 50'
PROFILE HORIZONTAL	1" = 50'
PROFILE VERTICAL	1" = 10'
CROSS SECTIONS	1" = 5'

PROJECT: Stowe - Gold Brook Br.
SHEET: F-116(7)
DRAWN BY: C. T. Egan
CHECKED BY: Oscar L. Olson
LOCATION: R# 100

APPROVED: Oct. 5, 1949
H. E. Lang
CHIEF EN.
SUBMITTED BY ORDER OF THE STATE H.

Pin: 012290
Date: 10/05/1949

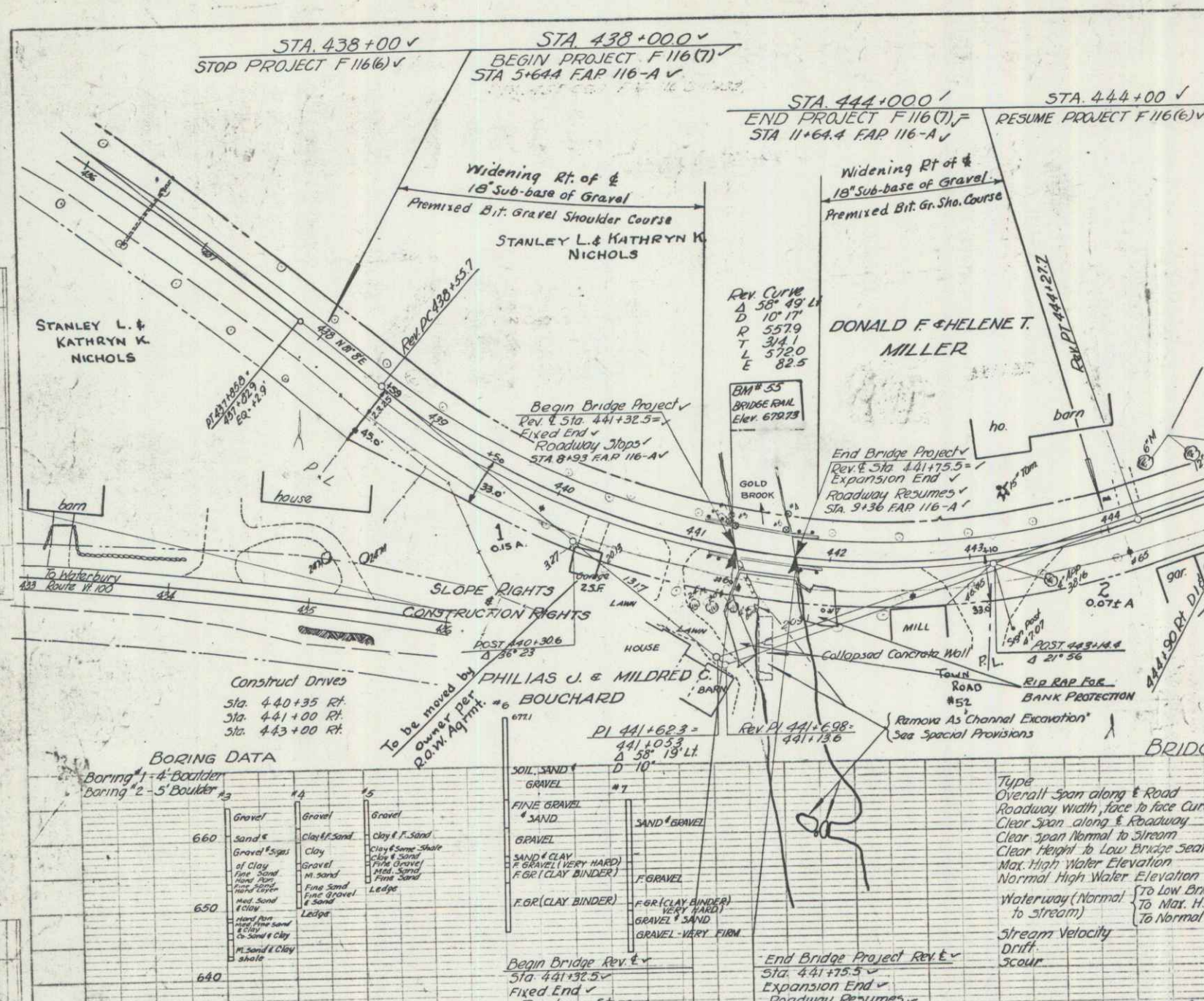
APPROVED: Oct. 5, 1949
A. O. S. [Signature]
BRIDGE ENGINEER

APPROVED: Oct. 5, 1949
[Signature]
HIGHWAY ENGINEER

APPROVED: Oct. 5, 1949
[Signature]
DISTRICT HIGHWAY COMMISSIONER

SERIES F No. 116 (7)
SHEET 1 OF 16

Stowe 199



PROJECT NAME AND NUMBER		TYPE	
STOWE-GOLD BROOK-F-116(7)		WIDENING T-BEAM BRIDGE-GRADING-DRAINAGE & GUARD RAIL	
RECORD PLANS			
MATERIALS			
FINE & COARSE AGGREGATE - NABEND SAND & GRAVEL CO. - JOHNSON, VT.		WHITE GUARD RAIL PAINT - REYNOLDS & SON, GAREE, VT.	
BITUMINOUS CONC. PAVEMENT-BRIDGE - STATE PLANT-MIDDLESEX.		BLACK GUARD RAIL PAINT - CENTRAL-STATE-GRASS, BERLIN, VT.	
WIRE CABLE GUARD RAIL - BETHLEHEM STEEL CO.-SHARON, MD.		AGGREGATE FOR PRE-MIX. BIT. OR SHOULDER COURSE-STATE PLANT, MIDDLESEX, VT.	
CEMENT-AIR ENT. TYPE 2-A - LEHIGH PORTLAND CEMENT CO.		REFINED TIE BLEND - BARRETT CO., WORCESTER, MASS.	
GRAVEL FOR SUB-BASE - ROCKY RIVER FARM - STOWE, VT. (RISE GRAVEL)		REINFORCING STEEL - VERMONT STRUCT. STEEL CO., BURLINGTON, VT.	
CONTRACTOR - OSCAR L. OLSON		CONTRACT DATED AUG. 22-1950	
RES. ENGR. - FRED W. BADGER		STARTED SEPT. 11-1950	
- S.Y. CLIFFORD		COMPLETED JUNE 26-1951	
RECORD PLANS - BY - D.W.R. 9-1951		ACCEPTED JUNE 26-1951	

REV. CURVE D 50' 49" LT P 10' 17" T 34.1 L 32.0 E 82.5	REV. CURVE D 23' 42" RT P 17.8 T 17.8 L 33.6 E 17.8
GRANTOR PHILIAS J. & MILDRED C. BOUCHARD	GRANTOR DONALD F. & HELENE T. MILLER
GRANTEE ST. OF VT.	GRANTEE ST. OF VT.
RECORDED BOOK 43 PAGE 6-2-50	RECORDED BOOK 48 PAGE 7-13-50

BORING DATA

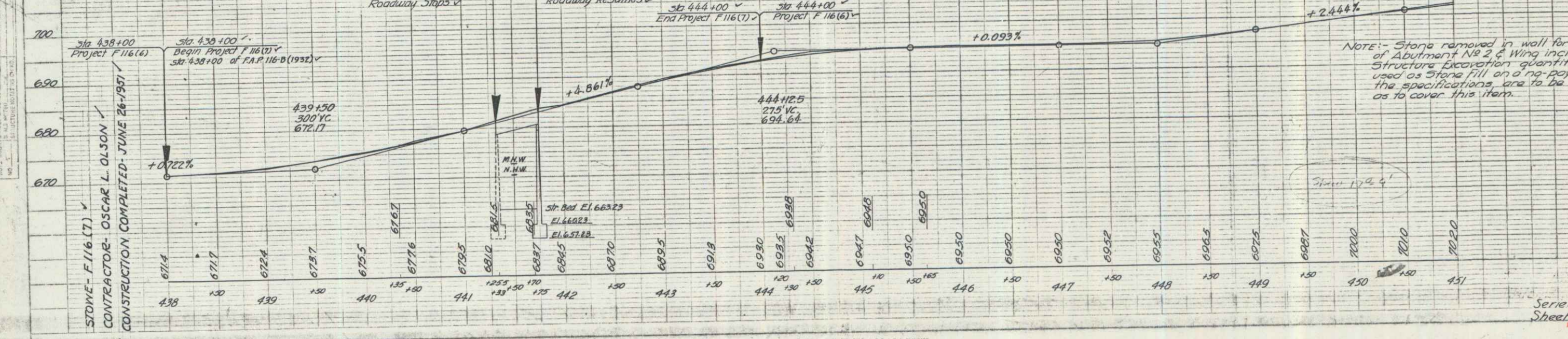
Boring #	1	2	3
660	Sand & Gravel	Clay & Sand	Clay & Sand
650	Sand & Gravel	Clay & Sand	Clay & Sand
640	Sand & Gravel	Clay & Sand	Clay & Sand

BRIDGE DATA

Type	Present	Proposed
Overall Span along E Road	43'-0"	43'-0"
Roadway Width face to face Curb	22'-0"	30'-0"
Clear Span along E Roadway	39'-10 1/2"	39'-10 1/2"
Clear Span Normal to Stream	38'-1 1/2"	38'-1 1/2"
Clear Height to Low Bridge Seat	14'-1 3/8"	14'-1 3/8"
Max. High Water Elevation	672.83	672.83
Normal High Water Elevation	670.43	670.43
Waterway (Normal to Stream)	3.58'	3.50'
Stream Velocity	Swift	Swift
Scour	Very little	Very little

SUMMARY OF QUANTITIES (Bridge Only)

101-B	Solid Rock Excavation	40	C.Y.
100	Channel Excavation	370	C.Y.
107	Structure Excavation	346	C.Y.
109	Maint. of Traffic for Bridge Projects	1	1.5
381	Bitum. Conc. Pavement for Bridge Floors	24	sq. ft.
401-B	Concrete Class B	26.24	cu. yd.
401-C	Concrete Class C	136	cu. yd.
402	Reinforcing Steel	13,719	lb.
542	Two Cable Guard Rail	86	ft.
542-B	Removal and Disposal of Present Guard Rail	86	ft.
524	Preparing Superstructure for Widening	1	1.5
524	Rip Rap for Bank Protection (Supplemental Agreement)	100	cu. yd.



NOTE: Stone removed in wall for extension of Abutment No 2 & Wing included in the Structure Excavation quantities is to be used as Stone fill on a no-pay basis and the specifications are to be so altered as to cover this item.