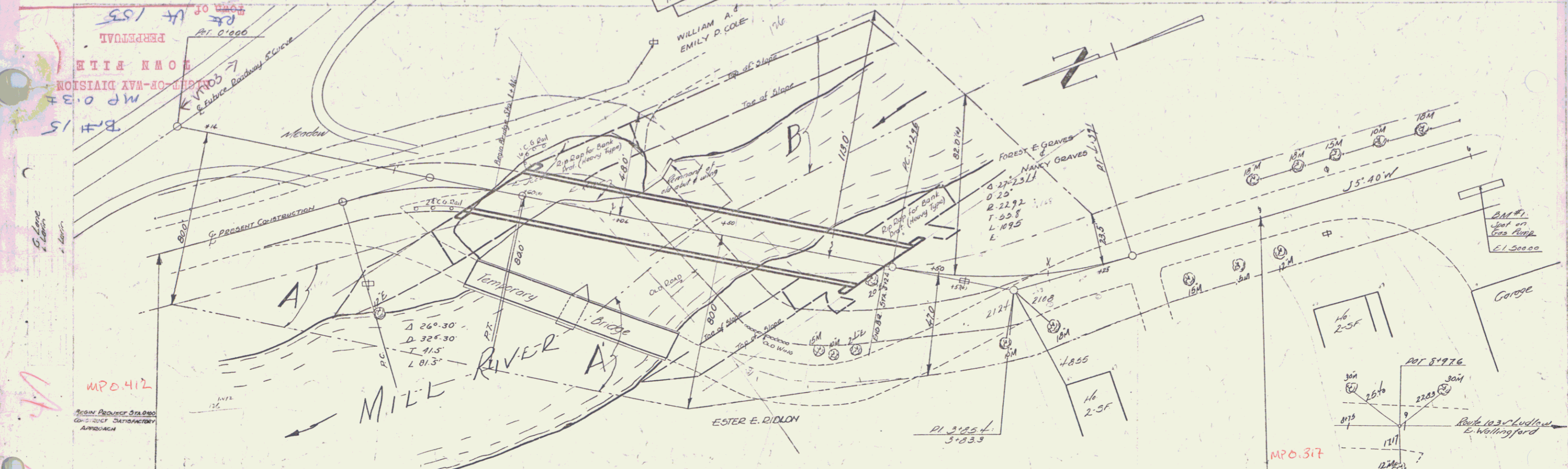


(To be Returned to R.O.W. Division)

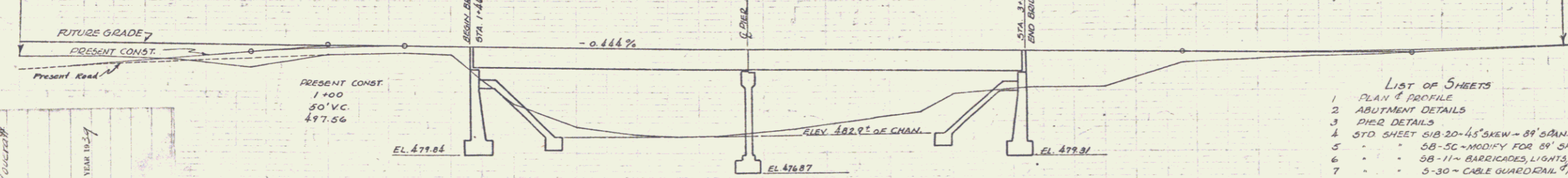


MP 0.412
 FROM PROPOSED STA 0+00
 TO EXISTING TEMPORARY
 APPROACH

MP 0.317
 END PROJECT STA 5+00
 CONSTRUCT SATISFACTORY APPROACH

BRIDGE DATA

TYPE	OLD	PROPOSED
OVERALL SPAN	170'-0"	216'-0" (3 SPANS)
CLEAR SPAN	162'-0"	162'-0"
CLEAR HEIGHT	11'-0"	11'-0"
ROADWAY	20'-0"	20'-0"
WATERWAY	1130"	1130"



THE PRESENT TEMPORARY BRIDGE SHALL BE REMOVED IN ACCORDANCE WITH ITEM 57 PAR. 572 BUT SHALL BE INCLUDED IN THE LUMP SUM BID FOR TEMPORARY BRIDGE (MAINT. & REMOVAL). ALL TIMBERS SHALL BE MATCH-MARKED FOR REASSEMBLY UNDER THE SUPERVISION OF THE ENGINEER.

APPROVED: *Nov 7 1939*
 CARL W. KILPATRICK
 DISTRICT HIGHWAY COMMISSIONER
 CORRECT
 A. D. SHELTON
 BRIDGE ENGINEER
 APPROVED: 1939
 COMMISSIONER OF HIGHWAYS

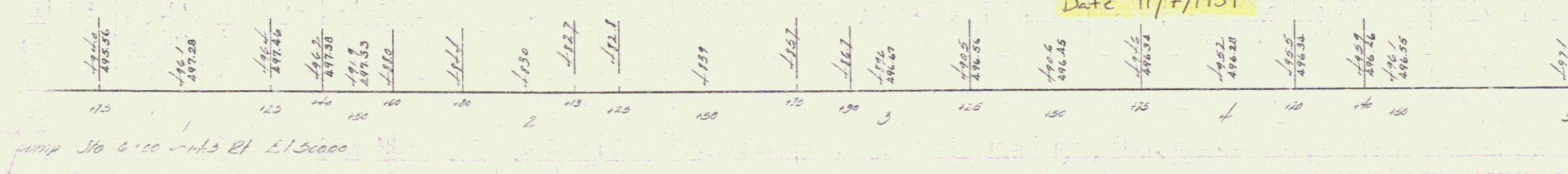
SUMMARY OF ESTIMATED BRIDGE QUANTITIES

NO.	ITEM	AMOUNT
10-11	Common Excav. incl. Bottom	15 C.Y.
15	Channel Excav.	1200 C.Y.
16	Structure Excav.	200 C.Y.
18	Maintenance of Traffic	1 L.S.
22	Ground Surface Course	240 C.Y.
41-A	Concrete Class "A"	122 C.Y.
41-B	" " " " " " " "	60 C.Y.
42	Reinforcing Steel	88500 Lbs.
43-B	Steel Superstructure (213,340)	1 L.S.
54	Temporary Bridge (Maint. & Removal)	1 L.S.
6B	RD. GAP FOR BANK PROTECTION (H.T.)	350 L.F.
80-A	Cable Guard Rail	500 L.F.
80-B	ANCHORS FOR C.G.R.	4 EA.

- LIST OF SHEETS**
- PLAN & PROFILE
 - ABUTMENT DETAILS
 - PIER DETAILS
 - STD. SHEET 618 20'-45' SKEW - 89' SPAN
 - 58-50 - MODIFY FOR 89' SPAN
 - 58-11 - BARRICADES, LIGHTS & SIGNS
 - 5-30 - CABLE GUARD RAIL & ANCHORS

TOWN OF WALLINGFORD
 Project FL 3-H
 Pin # 01288
 Route VT 155
 Date 11/7/1939

GRANTOR	GRANTEE	RECORDED	REMARKS
		WALLINGFORD	
23-33	W.A. & E.P. COLE	25 539	11-7-39
27-39	ESTHER E. RIDLON	25 537	11-7-39
29-40	FOREST & NANCY GRAVES	25 581	9-1-40



CABLE GUARD RAIL
 STA. 1150 TO 3+90 LT - 240 L.F.
 STA. 1110 TO 3+70 RT - 260 L.F.
 TOTAL 500

WALLINGFORD
 STATE FLOOD 3-H
 Sheet 7 of 12

DIST. # 3 Plans