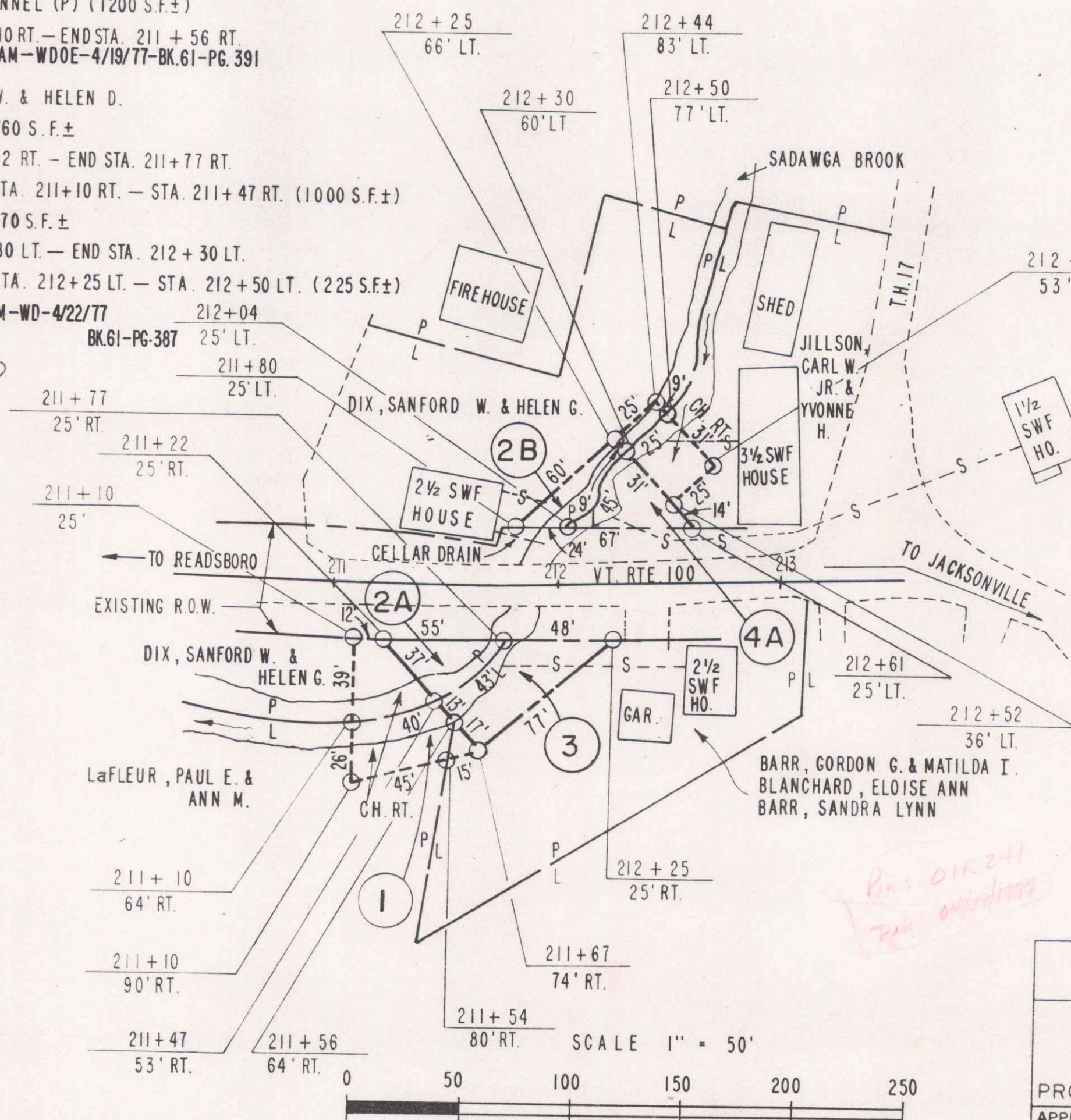


LaFLEUR, PAUL E. & ANN M.  
**PARCEL 1** CHANNEL (P) (1200 S.F.±)  
 BEG. STA. 211+10 RT. — END STA. 211+56 RT.  
 TOWN OF WHITINGHAM — WDOE-4/19/77-BK.61-PG.391

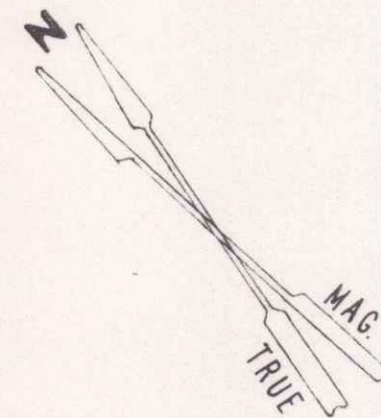
DIX, SANFORD W. & HELEN D.  
**PARCEL 2A** 760 S.F.±  
 BEG. STA. 211+22 RT. — END STA. 211+77 RT.  
 CHANNEL (P) STA. 211+10 RT. — STA. 211+47 RT. (1000 S.F.±)

**PARCEL 2B** 770 S.F.±  
 BEG. STA. 211+80 LT. — END STA. 212+30 LT.  
 CHANNEL (P) STA. 212+25 LT. — STA. 212+50 LT. (225 S.F.±)  
 TOWN OF WHITINGHAM — WD-4/22/77

M.P. 0400



Be#30

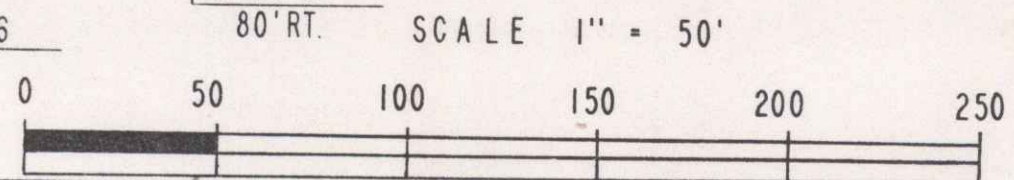


BARR, GORDON G. & MATILDA I.,  
 BLANCHARD, ELOISE ANN &  
 BARR, SANDRA LYNN  
**PARCEL 3** 1830 S.F.±  
 BEG. STA. 211+47 RT. — END STA. 212+25 RT.  
 CHANNEL (P) STA. 211+54 RT. — STA. 211+67 RT. (110 S.F.)  
 TOWN OF WHITINGHAM — WDOE-4/9/77 — BK.61 — PG.354

JILLSON, CARL W., JR. & YVONNE H.  
**PARCEL 4A** 970 S.F.±  
 BEG. STA. 212+04 LT. — END STA. 212+61 LT.  
 CHANNEL (P) STA. 212+30 LT. — STA. 212+70 LT.  
 (775 S.F.±)

**PARCEL 4B** DELETED  
 TOWN OF WHITINGHAM — WDOE-4/5/77 — BK.61 — PG.352

*Pin's 01R241  
 7/24/77*



STATE OF VERMONT  
 DEPT. OF HIGHWAYS (2)  
 TOWN OF WHITINGHAM  
 PROJECT WHITINGHAM BMA 6315  
 APPROX. SCALE 1"=50' DATE 8-10-76 DRAWN BY KDP

REV. 9-22-76