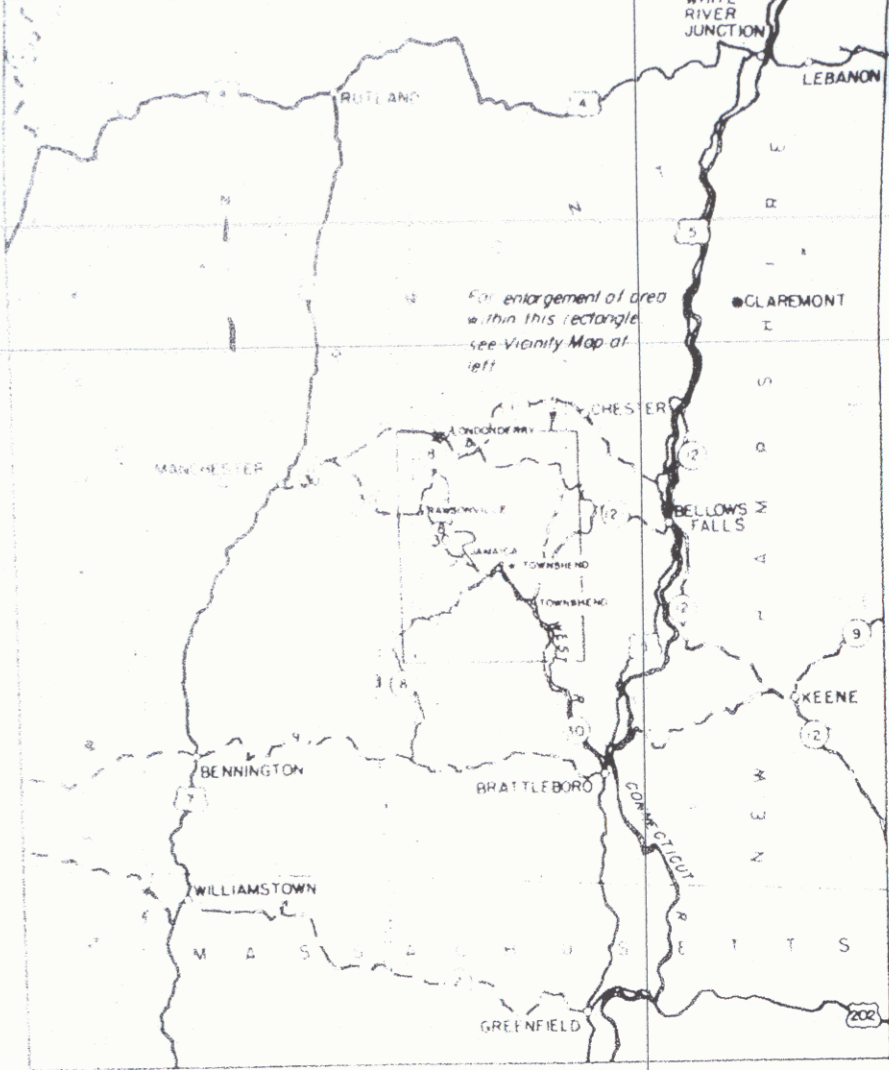


INDEX TO DRAWINGS

REVISION SHEET NO.	TITLE	FILE NO.
1	PROJECT LOCATION AND INDEX	
2	KEY PLAN	
3	KEY PROFILES	
4	TYPICAL SECTION SHEET	
5	ITEM DETAIL 1 - BRIDGE	
6	STANDARD STRUCTURES	
7	STANDARD STRUCTURES	
8	CONSTRUCTION DETAILS AND STANDARD STRUCTURES	
9	BARRICADES, SIGNS AND LIGHTS	
10	PLAN, GRADING AND DRAINAGE ROUTE 30 STA. 10+00 TO STA. 20+00	
11	PROFILES - ROUTE 30 STA. 10+00 TO STA. 20+00 - ROUTE 8 STA. 0+40.5 TO STA. 7+42.60	
12	PLAN, PROFILE, GRADING AND DRAINAGE ROUTE 30 STA. 20+00 TO STA. 35+00	
13	PLAN, PROFILE, GRADING AND DRAINAGE ROUTE 30 STA. 35+00 TO STA. 50+00	
14	PLAN, PROFILE, GRADING AND DRAINAGE ROUTE 30 STA. 50+00 TO STA. 62+00	
15	PLAN, PROFILE, GRADING AND DRAINAGE ROUTE 30 STA. 62+00 TO STA. 74+00	
16	PLAN, PROFILE, GRADING AND DRAINAGE ROUTE 30 STA. 74+00 TO STA. 86+00	
17	PLAN, PROFILE, GRADING AND DRAINAGE ROUTE 30 STA. 107+00 TO STA. 119+00	
18	PLAN, PROFILE, GRADING AND DRAINAGE ROUTE 30 STA. 119+00 TO STA. 133+00	
19	PLAN, PROFILE, GRADING AND DRAINAGE ROUTE 30 STA. 133+00 TO STA. 148+00	
20	PLAN, PROFILE, GRADING AND DRAINAGE ROUTE 30 STA. 148+00 TO STA. 162+00	
21	PLAN, PROFILE, GRADING AND DRAINAGE ROUTE 30 STA. 162+00 TO STA. 176+00	
22	PLAN, PROFILE, GRADING AND DRAINAGE ROUTE 30 STA. 176+00 TO STA. 190+00	
23	PLAN, PROFILE, GRADING AND DRAINAGE ROUTE 30 STA. 190+00 TO STA. 204+00	
24	PLAN, PROFILE, GRADING AND DRAINAGE ROUTE 30 STA. 219+00 TO STA. 234+00	
25	PROFILES - ROUTE 30 STA. 219+00 TO STA. 234+00 - ACCESS ROAD STA. 11+73.00 TO STA. 15+50	
26	PLAN, PROFILE, GRADING AND DRAINAGE ROUTE 30 STA. 234+00 TO STA. 247+00	
27	PLAN, DETAILS AND DRAINAGE - CONCRETE BRIDGE - STA. 11+73.00	
28	PLANS, ELEVATION AND SECTION - HANDED CURVE - STA. 11+73.00	
29	SECTION AND ELEVATION - HANDED CURVE - STA. 11+73.00	
30	STREET SCHEDULE	
31	MATERIAL SPECIFICATIONS	

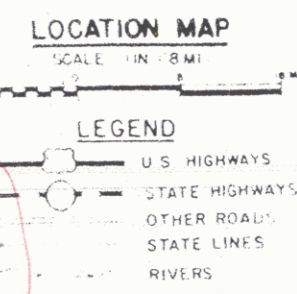


CROSS SECTIONS

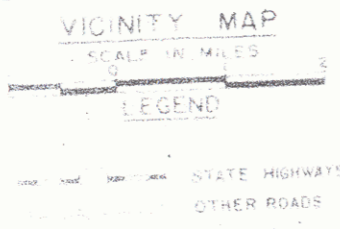
ROUTE 30 RELOCATION STA. 10+00 TO STA. 86+00
ROUTE 9 RELOCATION STA. 7+40.5 TO STA. 7+30
ROUTE 30 RELOCATION STA. 107+00 TO STA. 247+00
JDE LINE STA. 1+00 - STA. 112+00
SIDE LINE STA. 0+00 - STA. 127+00
HANBY BROOK CHANNEL LINE STA. 2+00 - STA. 127+00

Townshend MP 6.71 - 7.36
 Jamaica MP 0.00 - 0.79

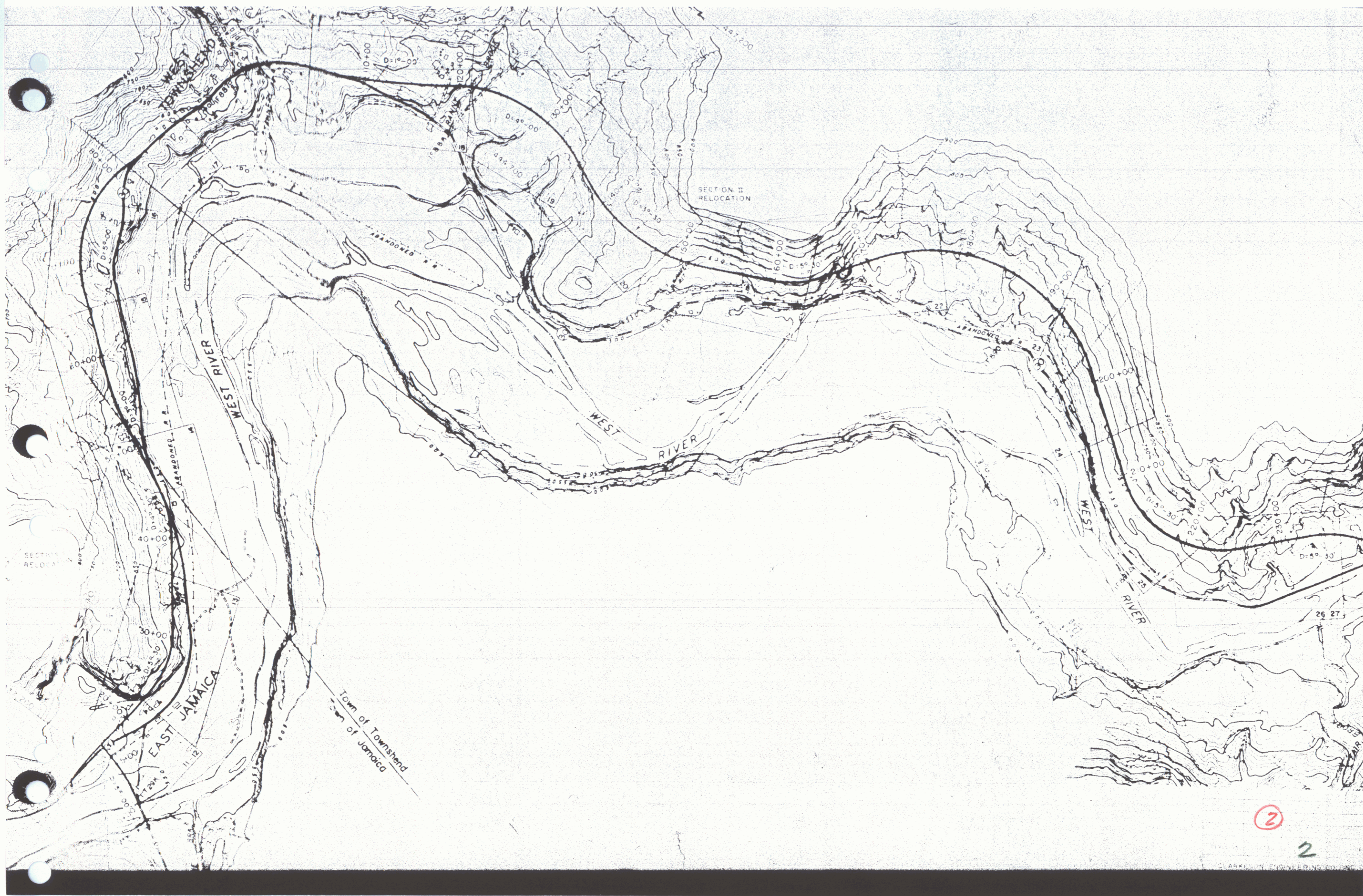
Towns of
 Townshend - Jamaica
 VT 30
 Army Corps Project
 Flood Control
 Proj: Army Engr
 Proj # 01R192
 01/01/1958



EARNS R. JERKINS
 173

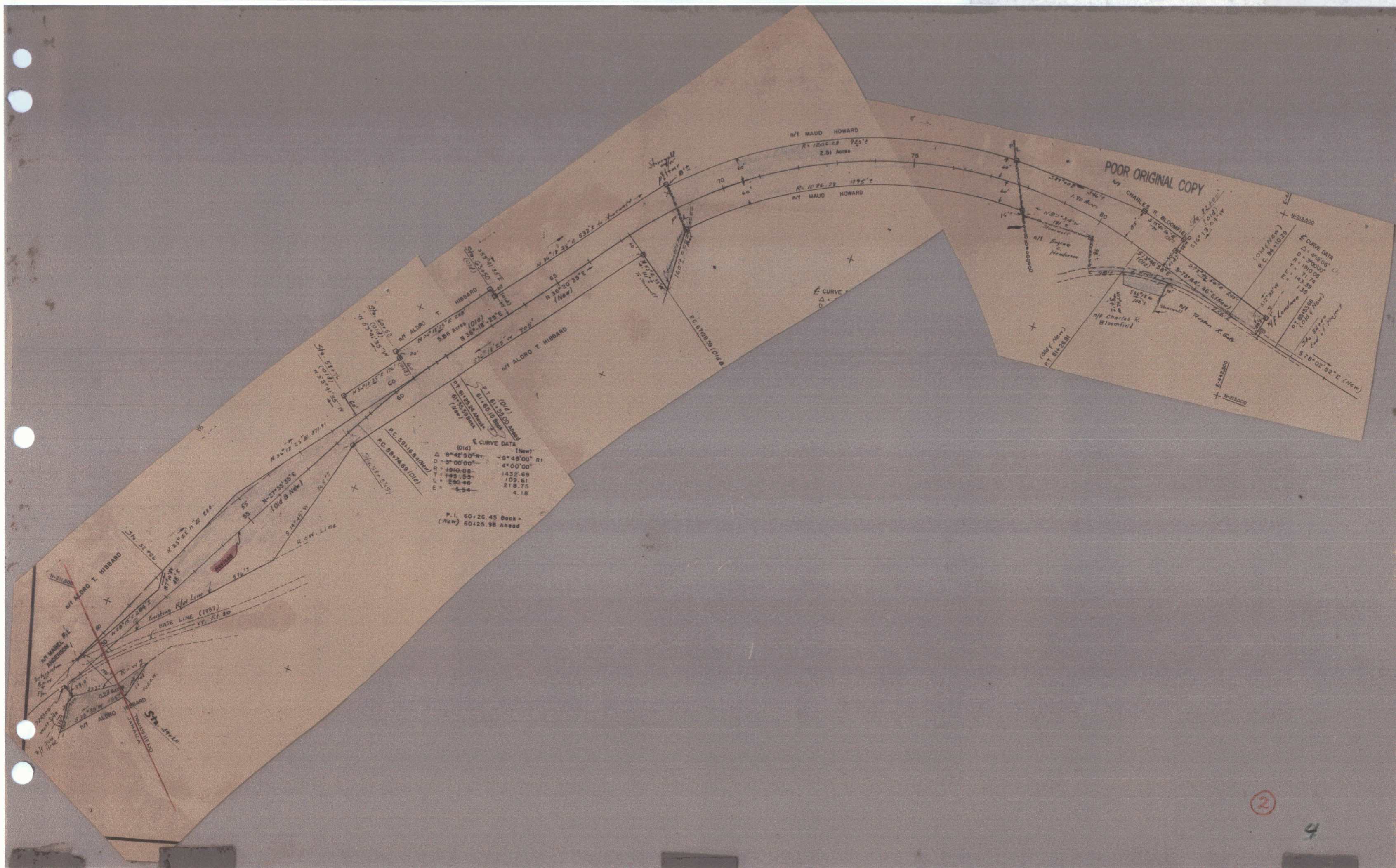


CONNECTICUT RIVER FLOOD CONTROL
 TOWNSHEND DAM
 ROAD RELOCATIONS



2

2



POOR ORIGINAL COPY

P.C. 84110.00
 P.T. 84110.00
 P.L. 84110.00
 P.C. 84110.00
 P.T. 84110.00
 P.L. 84110.00

CURVE DATA	
(Old)	(New)
Δ = 9° 45' 00" Rt.	Δ = 8° 45' 00" Rt.
D = 3° 00' 00"	D = 4° 00' 00"
R = 1010.00	R = 1432.69
T = 189.59	T = 109.61
L = 190.46	L = 218.75
E = 5.54	E = 4.18

P.L. 60+26.45 Back
 (New) 60+25.98 Ahead

2

4



D = 4700.00
 R = 955.37
 T = 327.66
 L = 671.00
 E = 54.63
 Bank 1/2" Per Ft. Lt.

CURVE DATA
 L = 327.66
 Q = 57.00
 E = 149.78
 T = 179.00
 C = 344.00
 E = 11.03
 Run = 744.96 Lt.

STA. 10+00
 BEGIN PROJECT (SECTION 1)
 Construct Satisfactory Approach

POOR ORIGINAL COPY

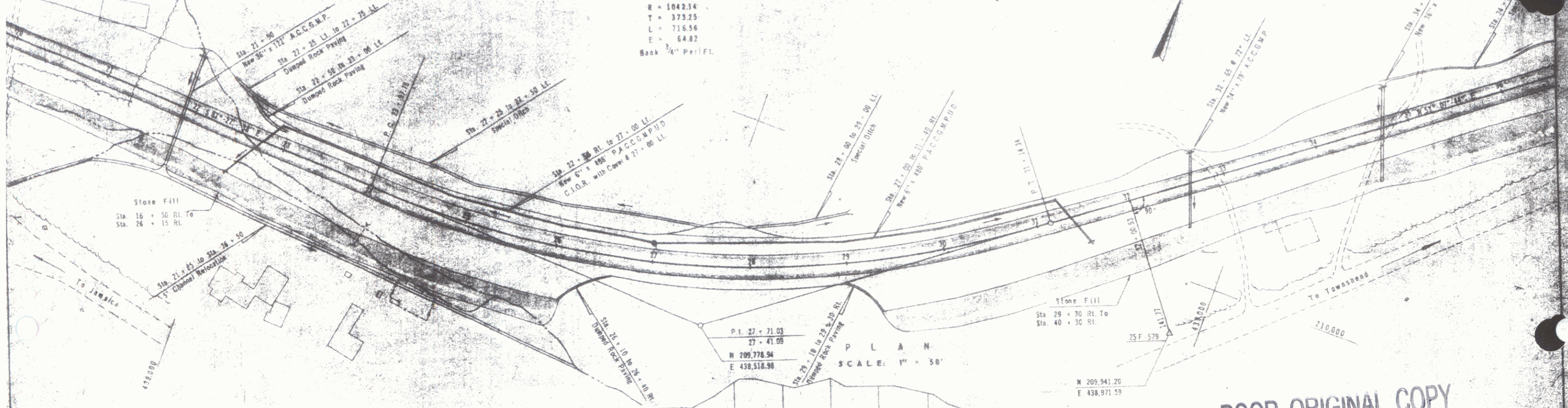
REVISION	DATE	DESCRIPTION	BY
CLARKESON ENGINEERING CO., INC. BOSTON, MASS.		CORPS OF ENGINEERS U.S. ARMY OFFICE OF THE DIVISION ENGINEER NEW ANDLAND DIVISION BOSTON, MASS.	
DRAWN BY	R.C.A.	CONNECTICUT RIVER FLOOD CONTROL ROAD RELOCATIONS	
TRACED BY		TOWNSHEND DAN	
CHECKED BY	R.C.A.	ROUTE 8 AND ROUTE 30 RELOCATIONS PLAN, GRADING AND DRAINAGE	
SUBMITTED		STA. 10+00 TO 20+00	
APPROVED		WEST RIVER	VERMONT
DATE		FEB 1967	
SCALE AS SHOWN		DATE	NOV 19 1967
DRAWING NUMBER	CT-1-4225		
SHEET	OF 4		

5

Standard 6" Underdrain Pipes
Sta. 23 + 00
Sta. 24 + 50
(Approximate Stations and the Actual Locations
will be Determined in the Field.)

Demolition and Removal of Building
Sta. 21 + 00 Lt.

CURVE DATA
Δ = 75° - 24' - 50" Lt.
D = 54' - 30"
R = 1042.14
T = 373.25
L = 716.56
E = 64.82
Back 3/4" Per Ft.



POOR ORIGINAL COPY



REVISION	DATE	DESCRIPTION
2		

CLARKSON ENGINEERING CO., INC.
BOSTON, MASS.

CORPS OF ENGINEERS U.S. ARMY
OFFICE OF THE DIVISION ENGINEER
NEW ENGLAND DIVISION
BOSTON, MASS.

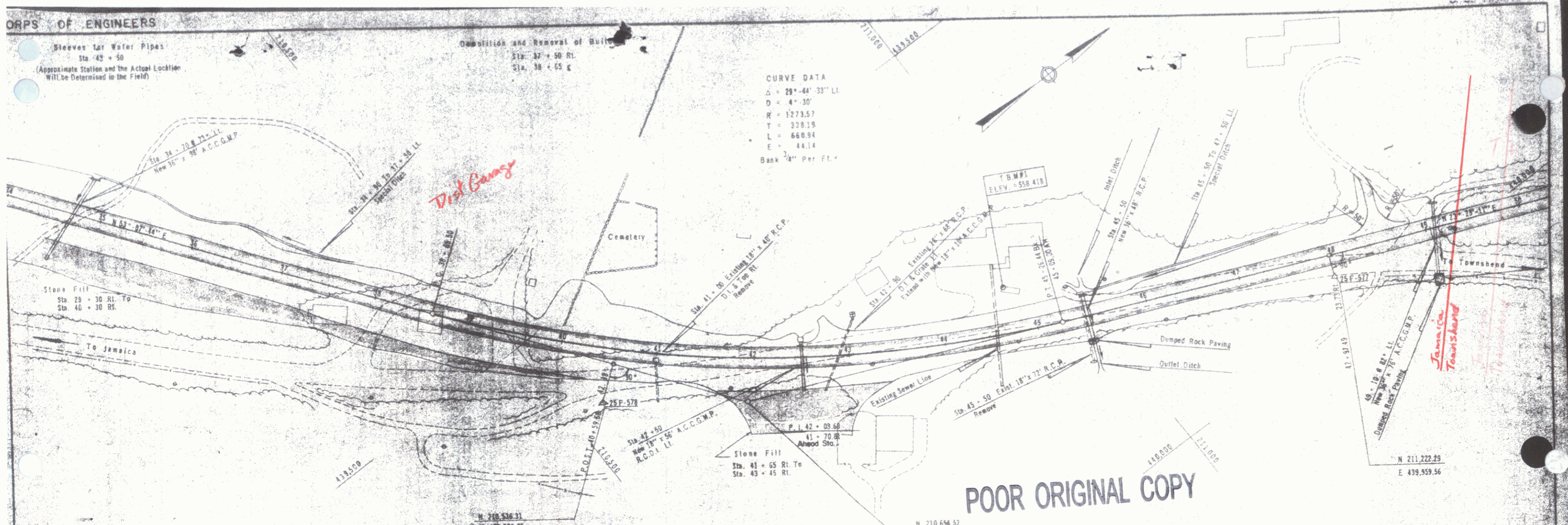
CONNECTICUT RIVER FLOOD CONTROL
TOWNSHEND DAM
ROUTE 30 RELOCATION
PLAN PROFILE GRADING AND DRAINAGE

ORPS OF ENGINEERS

Sleeves for Water Pipes
Sta. 43 + 50
(Approximate Station and the Actual Location
Will be Determined in the Field)

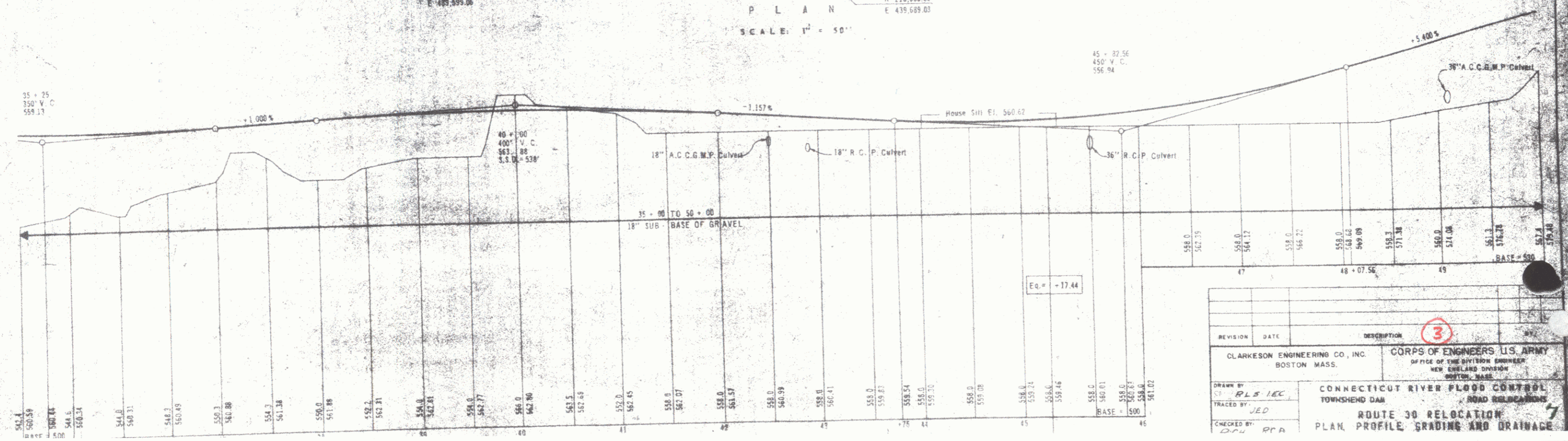
Demolition and Removal of Building
Sta. 37 + 50 RL
Sta. 38 + 65 g

CURVE DATA
 $\Delta = 29^{\circ}44'33''$ Lt.
 $D = 4^{\circ}30'$
 $R = 1273.57$
 $T = 328.19$
 $L = 660.94$
 $E = 44.14$
Bank $\frac{3}{4}''$ Per Ft.



POOR ORIGINAL COPY

P L A N
SCALE: 1" = 50'



REVISION	DATE	DESCRIPTION

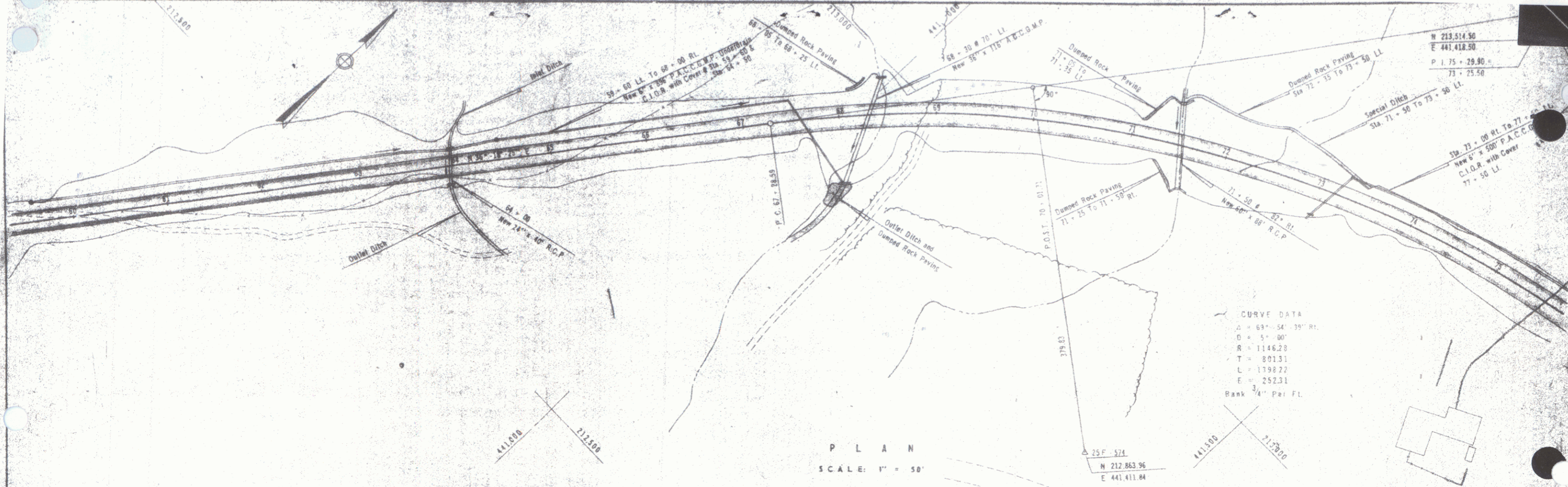
DRAWN BY: RLS/IEC
 TRACED BY: JED
 CHECKED BY: DCH/PCA

CLARKESON ENGINEERING CO., INC.
 BOSTON, MASS.

CORPS OF ENGINEERS U.S. ARMY
 OFFICE OF THE DIVISION ENGINEER
 NEW ENGLAND DISTRICT
 BOSTON, MASS.

CONNECTICUT RIVER FLOOD CONTROL
 TOWNSHEND DAM
 ROAD RELOCATIONS
 ROUTE 30 RELOCATION
 PLAN, PROFILE, GRADING AND DRAINAGE

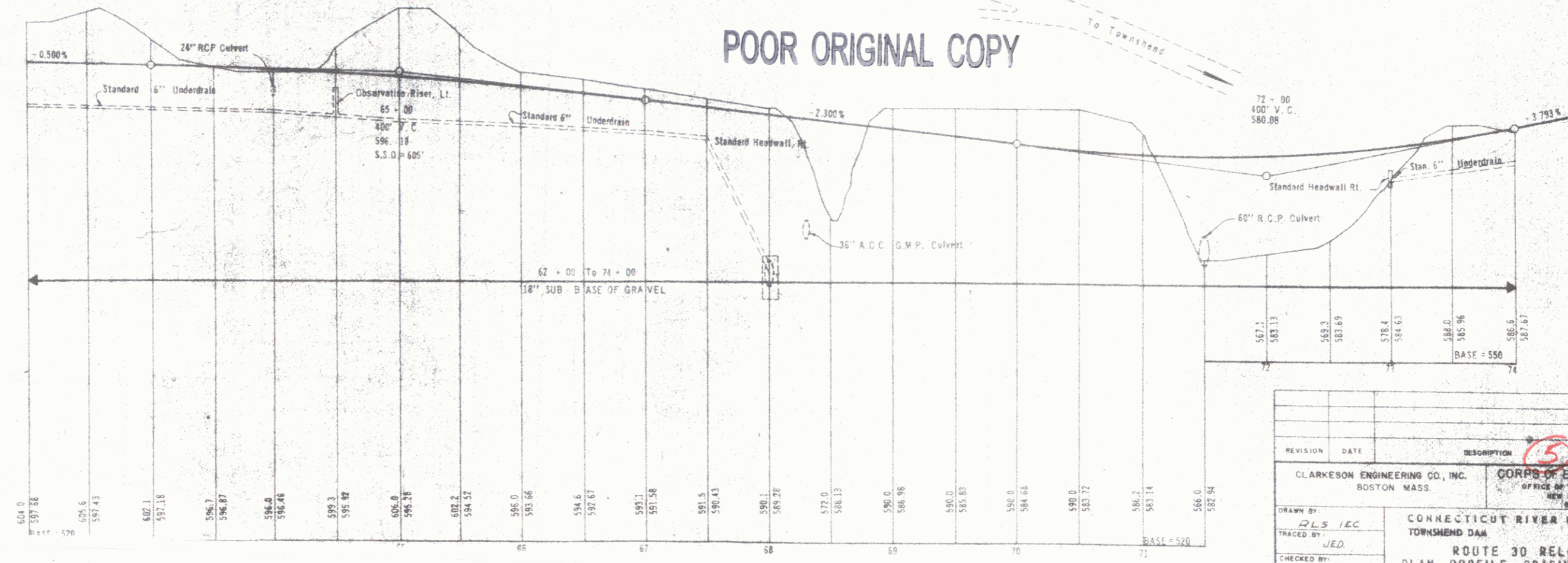
CORPS OF ENGINEERS



PLAN
SCALE: 1" = 50'

CURVE DATA
 Δ = 69° - 54' - 39" Rt.
 D = 51' - 00"
 R = 1146.28
 T = 801.31
 L = 1798.22
 E = 252.31
 Bank 3/4" Per Ft.

POOR ORIGINAL COPY



REVISION	DATE	DESCRIPTION

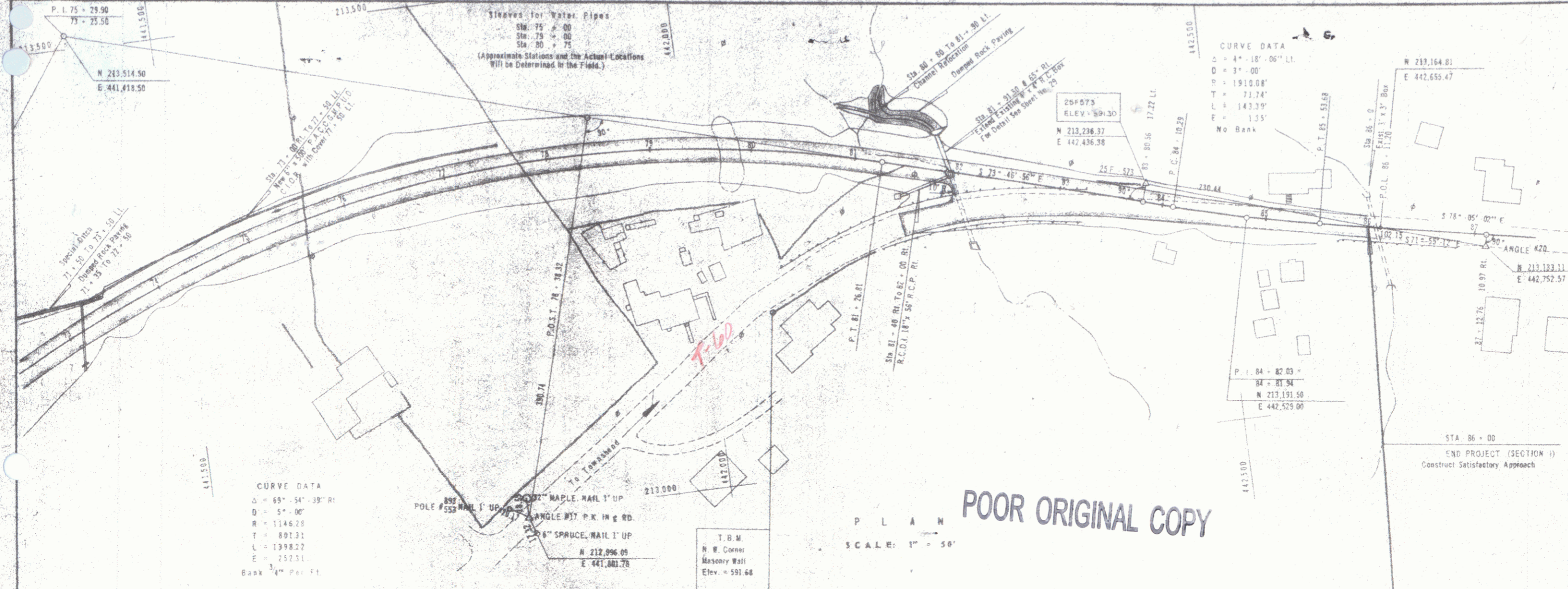
CLARKESON ENGINEERING CO., INC.
 BOSTON, MASS.

CORPS OF ENGINEERS U.S. ARMY
 OFFICE OF THE DIVISION ENGINEER
 NEW BRIDGE DIVISION
 BOSTON, MASS.

DRAWN BY: DLS/IEC
 TRACED BY: JED
 CHECKED BY: RCH/RCA

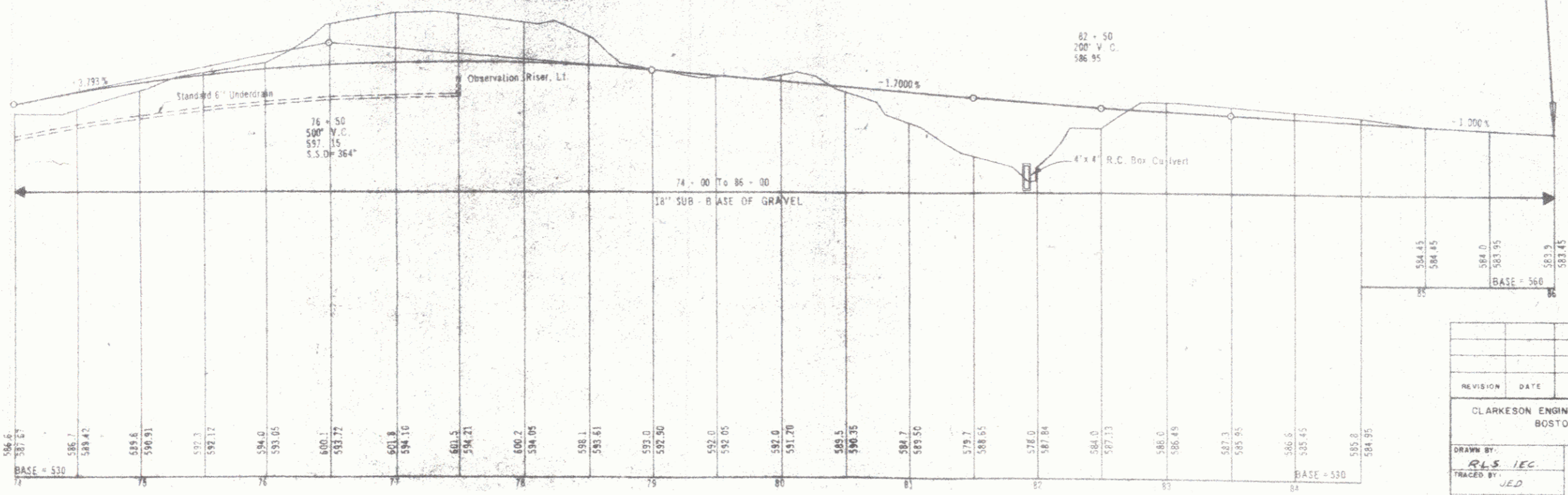
CONNECTICUT RIVER FLOOD CONTROL
 TOWNSEND DAM
 ROAD RELOCATION
 ROUTE 30 RELOCATION
 PLAN, PROFILE, GRADING AND DRAINAGE
 STA. 59+00 TO STA. 74+00

CORPS OF ENGINEERS



POOR ORIGINAL COPY

SCALE: 1" = 50'



REVISION	DATE	DESCRIPTION	BY

CLARKSON ENGINEERING CO., INC. BOSTON MASS. CORPS OF ENGINEERS U.S. ARMY OFFICE OF THE DIVISION ENGINEER NEW ENGLAND DIVISION BOSTON, MASS.

CONNECTICUT RIVER FLOOD CONTROL TOWNSHEND DAM ROAD RELOCATIONS ROUTE 30 RELOCATION 10