

STATE OF VERMONT
DEPARTMENT OF HIGHWAYS



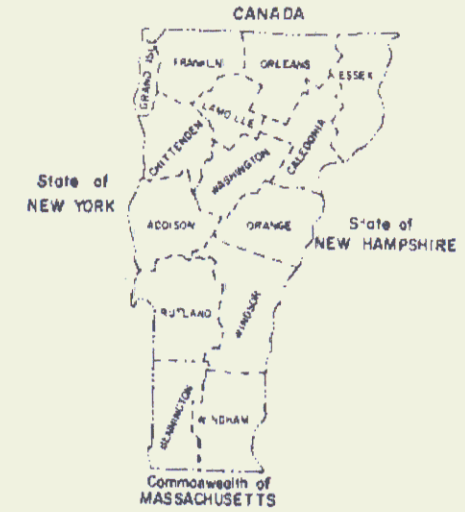
PROPOSED IMPROVEMENT
BRIDGE PROJECT

TOWN OF CORINTH
COUNTY OF ORANGE

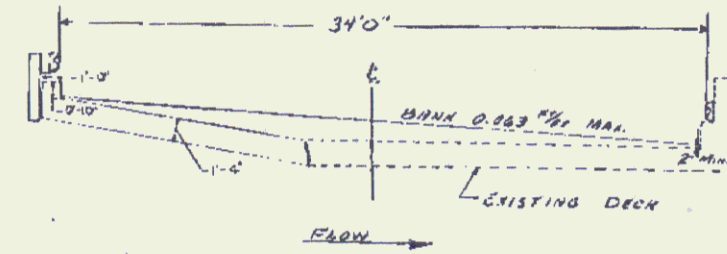
ROUTE NO: VT 25 BRIDGE NO: B11

PROJECT LOCATION: BEGINNING AT A POINT 450.8 FEET WESTWESTLY OF THE INTERSECTION OF VT 25 AND STATE RD # 1, SAID SA# 1 LEADING TO EAST CORINTH AND EAST TOPSHAM, AND CONTINUING ON VT 25 NORTHWESTLY FOR A DISTANCE OF 950.3 FEET.
PROJECT DESCRIPTION: WIDENING BRIDGE # 11, ON THE WESTERN SIDE, TO 34 FEET FACE TO FACE OF GUARDRAILS AND PERFORMING THE REQUIRED APPROACH WORK.

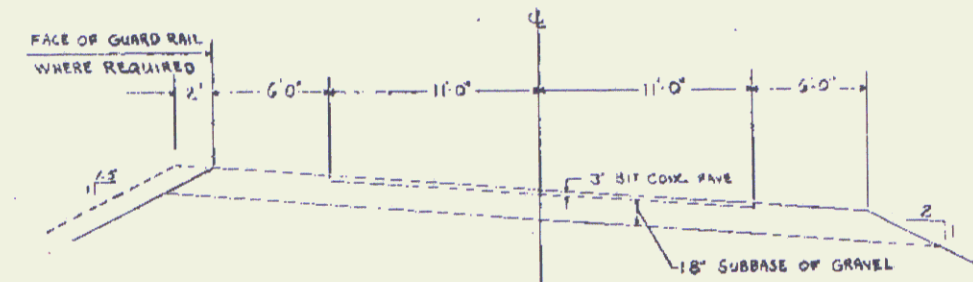
LENGTH OF STRUCTURE: 18 FEET
LENGTH OF PARTICIPATION ROADWAY: 932 FEET
LENGTH OF NON-PARTICIPATION ROADWAY: 0 FEET
LENGTH OF PROJECT: 950 FEET



LOCATION MAP
(TRACED FROM COUNTY MAP)



TYPICAL BRIDGE SECTION
SCALE 1" = 5'



TYPICAL ROADWAY SECTION
SCALE 1" = 5'

GENERAL NOTES:

CONVENTIONAL SIGNS

COUNTY LINE	---
TOWN LINE	- - - - -
LIMITS OF ACCESS	- - - - - X
POINT OF ACCESS	X
FENCE LINE	-----
STONE WALL	-----
TRAVELED WAY	-----
GUARD RAIL	-----
RAILROAD	-----
SURVEY LINE	-----
CULVERT	-----
POWER POLE	○
TELEPHONE POLE	○
TREES	○
FA CONST IDENTIFICATION SIGNS	▲
PROPERTY LINE	-----
ROW TAKING LINE	-----
SLOPE RIGHTS	○ SR ○
TOP OF CUT	△
TOE OF SLOPE	○

MP 2.163-2.362

Pin # 01R176

Date 8/9/1977

SUBMITTED BY ORDER OF THE STATE HIGHWAY BOARD

APPROVED: _____ DATE _____
CHIEF ENGINEER

CORINTH
VT 25 OVER PIKE HILL BROOK

PROJECT: VT DMA 6756

SHEET 1 OF 3 SHEETS

STATE OF VERMONT
DEPARTMENT OF HIGHWAYS
RIGHT-OF-WAY PLANS
DETAIL SHEET

TABLE OF PROJECT PROPERTY ACQUISITION

PARCEL NO.	GRANTOR	SHEET NO.	BEGINNING STATION	ENDING STATION	TAKING	REM.	RIGHTS	TITLE TAKEN	DATE	TOWN OR CITY RECORDED	BLK.	PG.	REMARKS
1 A	MARTIN, WILLARD B.	3	REV.16+20LT.	REV.19+65LT.	0.13A ±			W.D.O.E.	8-18-77	CORINTH	38	X-15	
			REV. 16+70LT.					DRIVE (T)					
B			REV. 21+60LT.	REV.22+63LT.	0.05A ±								(2300 SF)
			REV. 21+80LT.	REV.21+98LT.				CHANNEL (P)					
2	BRULEIGH, MERVIL H. & JOSEPHINE A.	3	REV.19+63LT.	REV.21+64LT.	0.1A ±			W.D.O.E.	8-8-77	CORINTH	38	447	(800 S.F.)
			REV. 21+35LT.	REV.21+64LT.				CHANNEL (P)					
3	DOWNING, LAWRENCE E. & HANNAH	3	REV.21+45 RT.	REV. 21+84RT.				W.D.O.E.	8-25-77	CORINTH	38	22-3	(1050 S.F.)
4	JOHN BYRNE INC.	3	REV.21+83RT.	REV.22+05RT.				W.D.O.E.	8-18-77	CORINTH	38	9-11	(750 S.F.)
5	PIERSON, GENE L. & DEANNA	3	REV. 22+63LT.	REV.24+77LT.	0.07A ±			W.D.O.E.	8-18-77	CORINTH	38	4-5	(5250 S.F.)
6	WASHINGTON ELECTRIC COOP												UTILITY
7	TOPSHAM TELEPHONE COMPANY												UTILITY

TABLE OF REVISIONS

REVISION NO.	SHEET NO.	DESCRIPTION OF REVISION	DATE	MADE BY	APPROVED BY

MADE BY: A.G.S. DATE 4/21/77
CHECKED BY: W.E.B. DATE 3/21/77

DR RE - DRAINAGE RIGHT
DIF RT - DITCHING RIGHT
CH RC - CHANNEL RIGHT
DRVE RT - DRIVE RIGHT
CUL RT - CULVERT RIGHT
(D) - DEMOLITION OR REMOVAL
(W) - WATER SOURCES

----- PRESENT R.O.W.
-H- -H- TAKING WITHOUT ACCESS
-H- P -H- TAKING WITHOUT ACCESS ALONG PROPERTY LINES
----- TAKING WITH ACCESS
(P) PERMANENT EASEMENT
(T) TEMPORARY EASEMENT

LEGEND
-SR- -SR- SLOPE RIGHTS
-P- -P- PROPERTY LINE
-Δ- -Δ- TOP OF CUT
-(O) -(O) TOP OF SLOPE

APPROVED Thomas P. Mayo DATE 4-21-77
CHIEF OF HIGHWAY TITLES

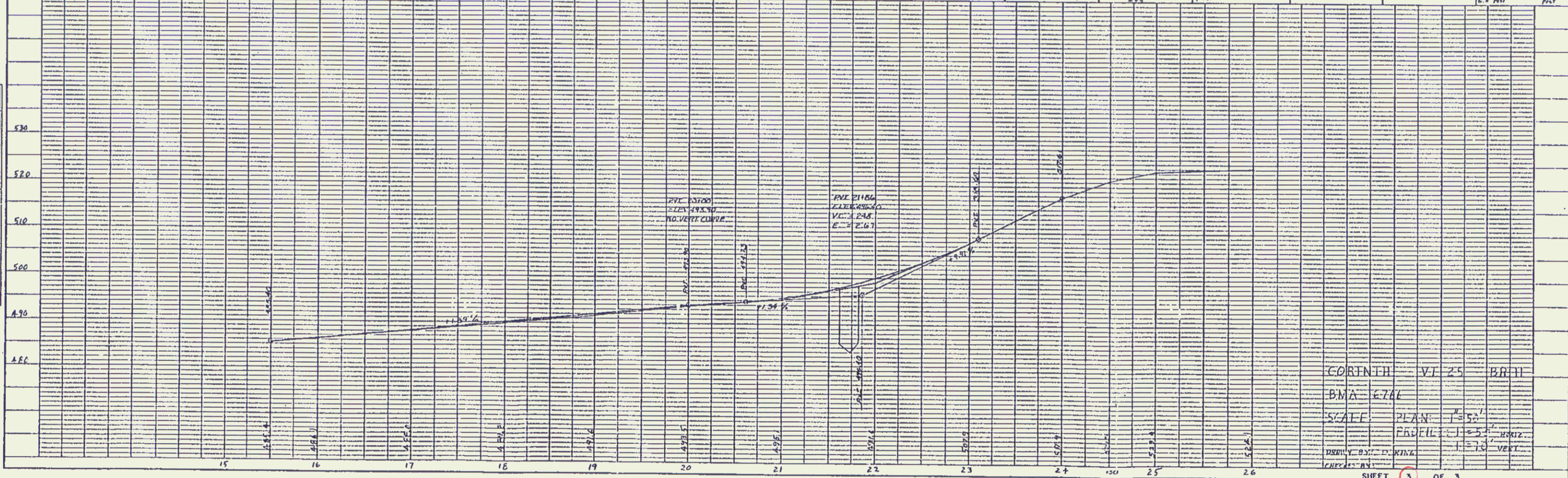
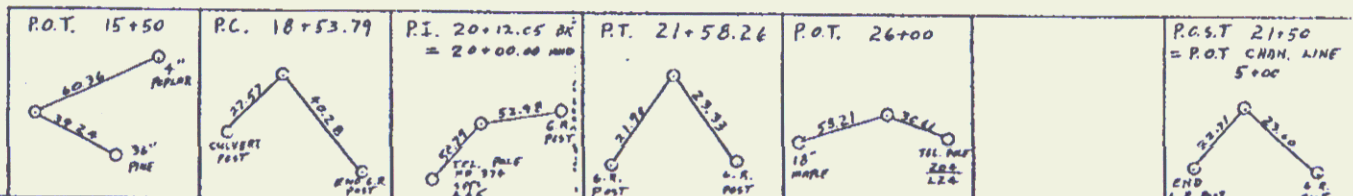
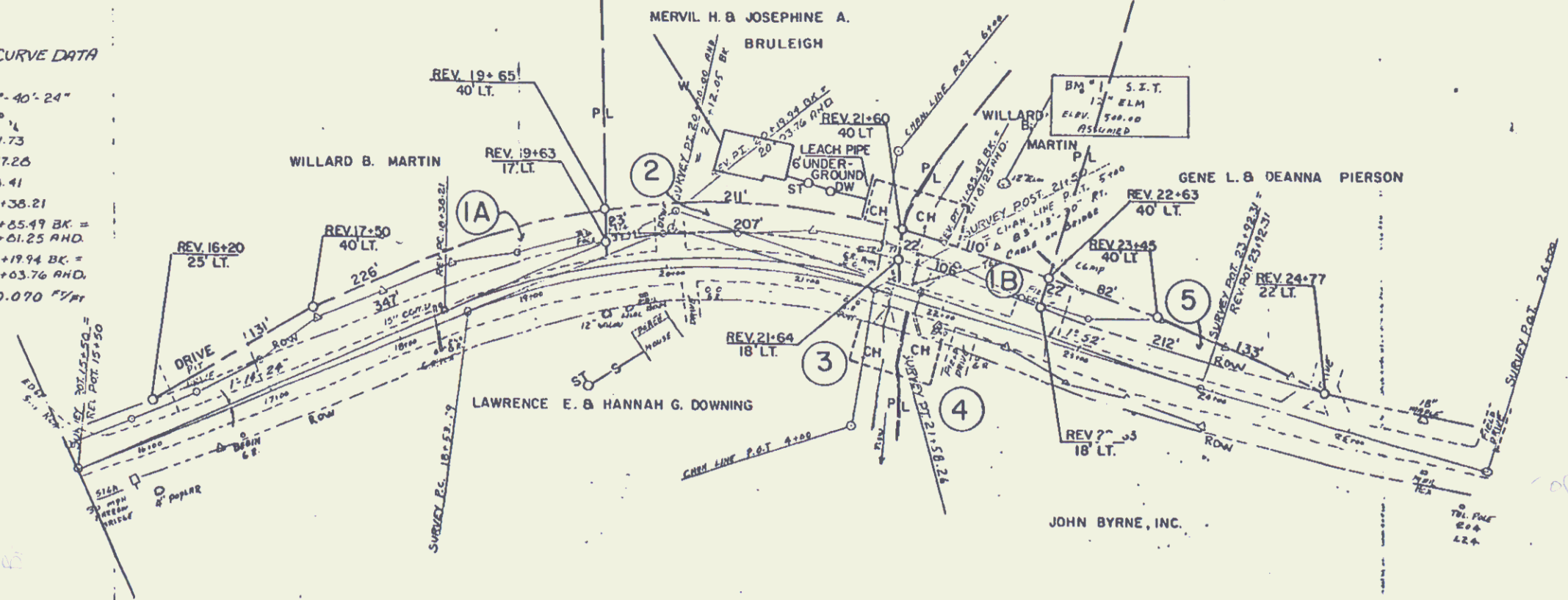
PROJECT CORINTH
NO. BMA 6766
SHEET 2 OF 3

SURVEY CURVE DATA
 CURVE #1
 Δ 38° 31'
 D 12° 40'
 T 158.26
 L 304.47
 E 26.89
 PC. 18+53.79
 PT. 21+58.26
 PI. 20+12.05 BK.
 = 20+00.00 AND.

REVISED CURVE DATA
 Δ 41° 40' 24"
 D 12° 4'
 T 181.73
 L 347.28
 E 33.41
 PC. 18+38.21
 PT. 21+65.99 BK =
 21+01.25 AND
 PI. 20+19.94 BK =
 20+03.76 AND.
 BANK 0.070 %/ft

PLAN
 DRAWN BY: []
 CHECKED BY: []
 DATE: []

PROFILE
 DRAWN BY: []
 CHECKED BY: []
 DATE: []



CORINTH VI 25 BR II
 BMA 6761
 SCALE PLAN 1"=50'
 PROFILE 1"=5' VERT
 SHEET 3 OF 3

PLATE 1, PLAN-PROFILE
 KE
 48 7064 HERCULENE®

ADD 04 1077