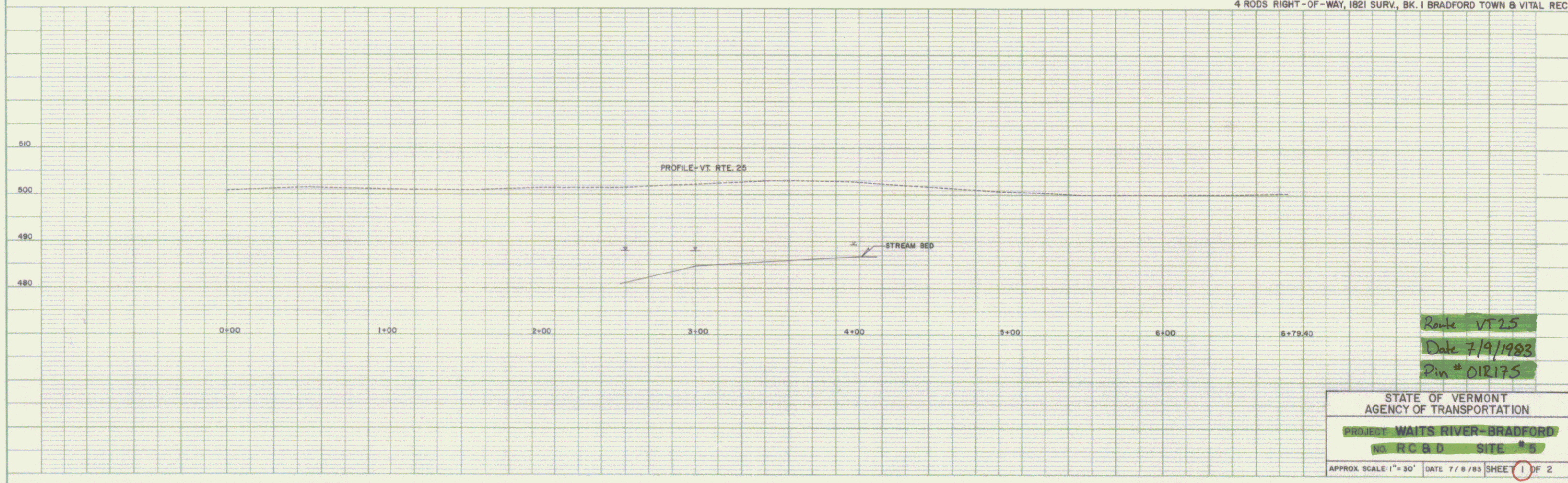
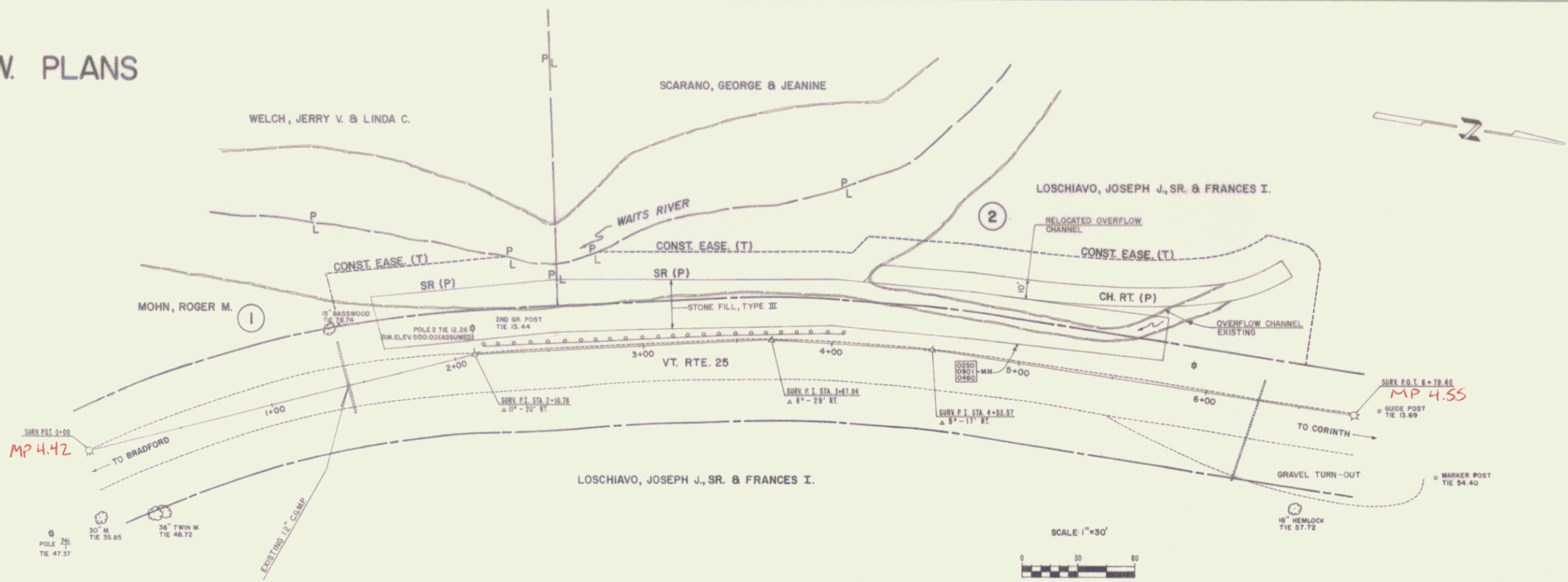


R.O.W. PLANS



Route VT 25
 Date 7/9/1983
 Pin # 01R175

STATE OF VERMONT AGENCY OF TRANSPORTATION	
PROJECT: WAITS RIVER - BRADFORD	
NO. RC & D SITE # 5	
APPROX. SCALE: 1" = 30'	DATE 7/8/83 SHEET 1 OF 2

STATE OF VERMONT
AGENCY OF TRANSPORTATION
RIGHT-OF-WAY PLANS
DETAIL SHEET

TABLE OF PROJECT PROPERTY ACQUISITION

PARCEL NO.	GRANTOR	SHEET NO.	BEGINNING STATION	ENDING STATION	TAKING	REM.	RIGHTS	TITLE TAKEN	DATE	TOWN OR CITY RECORDED	BK.	PG.	REMARKS
1	HORN, ROGER M.	1	1+65 LT. 1+45 LT.	2+56 LT. 2+56 LT.			SLOPE (P) (0.03 Ac.) CONST. EASE. (T) (0.04 Ac.)	W.D.O.E.	10-26-83	BRADFORD	57	201-43	(1244 S.Ez.) (1925 S.Ez.)
2	LOSCHIARO, JOSEPH J., SR. & FRANCES I.	1	2+56 LT. 2+56 LT. 4+15 LT.	4+70 LT. 6+50 LT. 6+35 LT.			SLOPE (P) (0.05 Ac.) CONST. EASE. (T) (0.20 Ac.) CHANNEL (P) (0.05 Ac.)	W.D.O.E.	11-9-83	BRADFORD	57	243-45	(2220 S.Ez.) (2250 S.Ez.)
3	CENTRAL VERMONT PUBLIC SERVICE CORP.												UTILITY
4	TOPSHAM TELEPHONE CO.												UTILITY

TABLE OF REVISIONS

REVISION NO.	SHEET NO.	DESCRIPTION OF REVISION	DATE	MADE BY	APPROVED BY
1	1, 2	Parcel 1 MOKN, Revised Sta. Slope From 1+15 Lb. To 1+65 Lb. Changed Area 0.09 Ac. 1525' To 0.03 Ac. 1244' Ac. Revised Const. Eas. From 1+65 Lb. 0.05 Ac. 2340' To 1+45 Lb. 0.04 Ac. 1925' Per C.A. # 0997	9-8-83	B.A.M.	[Signature]

MADE BY: B.A.M. DATE 7-8-83
 CHECKED BY: B.L.S. DATE 7-8-83

DR. RT - DRAINAGE RIGHT
 DIT. RT - DITCHING RIGHT
 CH. RT - CHANNEL RIGHT
 DRIVE RT - DRIVE RIGHT
 CUL. RT - CULVERT RIGHT
 (D) - DEMOLITION OR REMOVAL
 (W) - WATER SOURCES

PRESENT R.O.W.
 // - // - // TAKING WITHOUT ACCESS
 // P - // TAKING WITHOUT ACCESS ALONG PROPERTY LINES
 // - // TAKING WITH ACCESS
 (P) - PERMANENT EASEMENT
 (T) - TEMPORARY EASEMENT

LEGEND
 - - - - - CONST. EASE. - - - - - CONST. EASEMENT
 SR - SR - SLOPE RIGHTS
 P - P - PROPERTY LINE
 - Δ - Δ - TOP OF CUT
 - O - O - TOP OF SLOPE

APPROVED: [Signature] DATE 7/8/83
 CHIEF OF PLANS & TITLES

PROJECT WAITS RIVER-BRADFORD
 NO. RC&D SITE # 5
 SHEET 2 OF 2