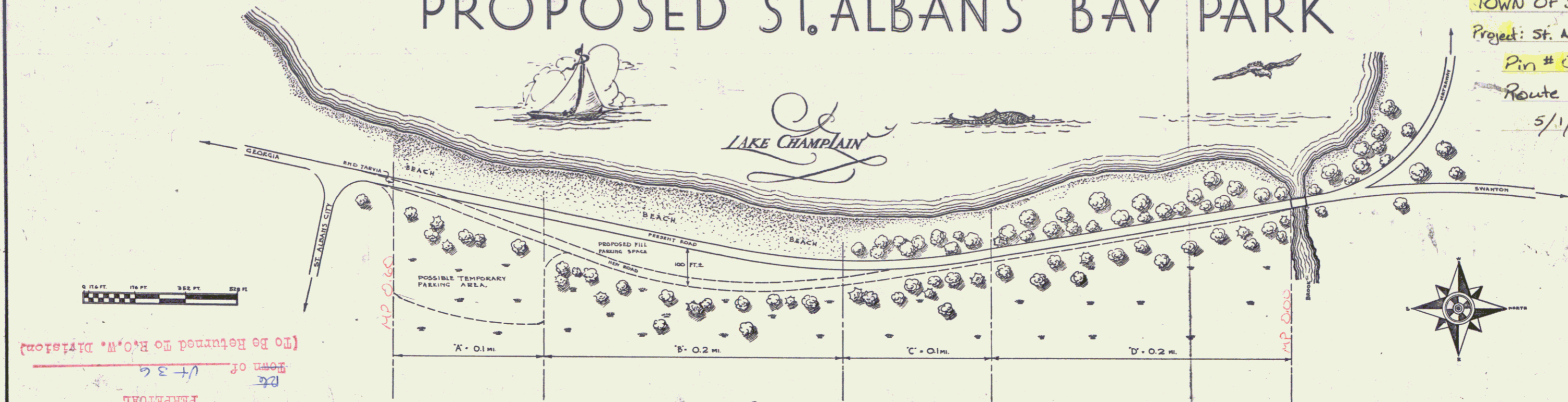
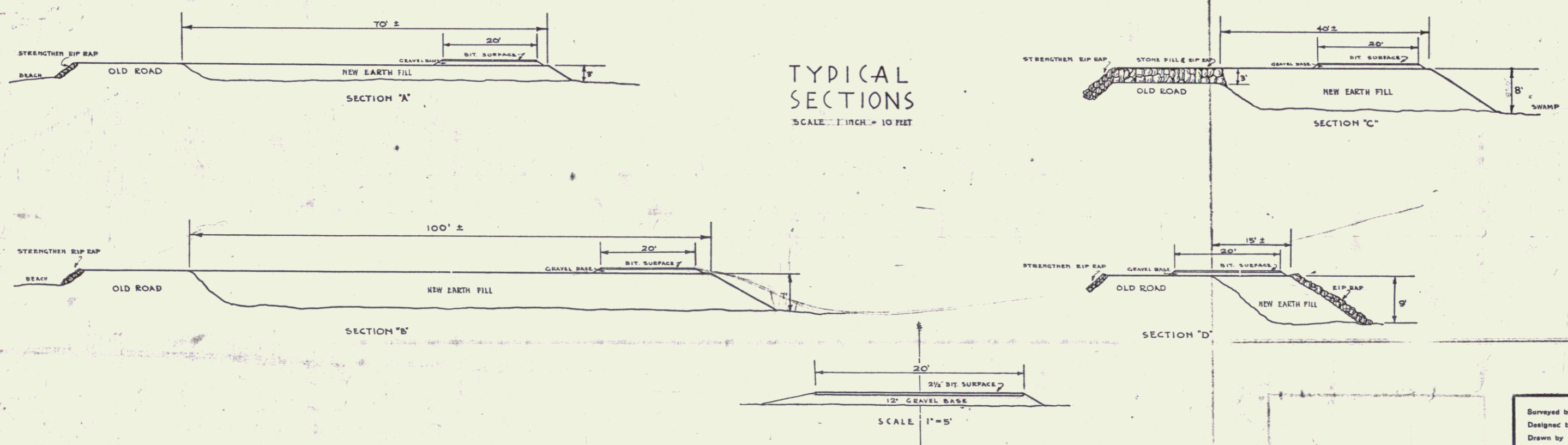


PROPOSED ST. ALBANS BAY PARK

TOWN OF ST. ALBANS
 Project: St. Albans Bay Park
 Pin # 01R142
 Route VT36
 5/1/1934



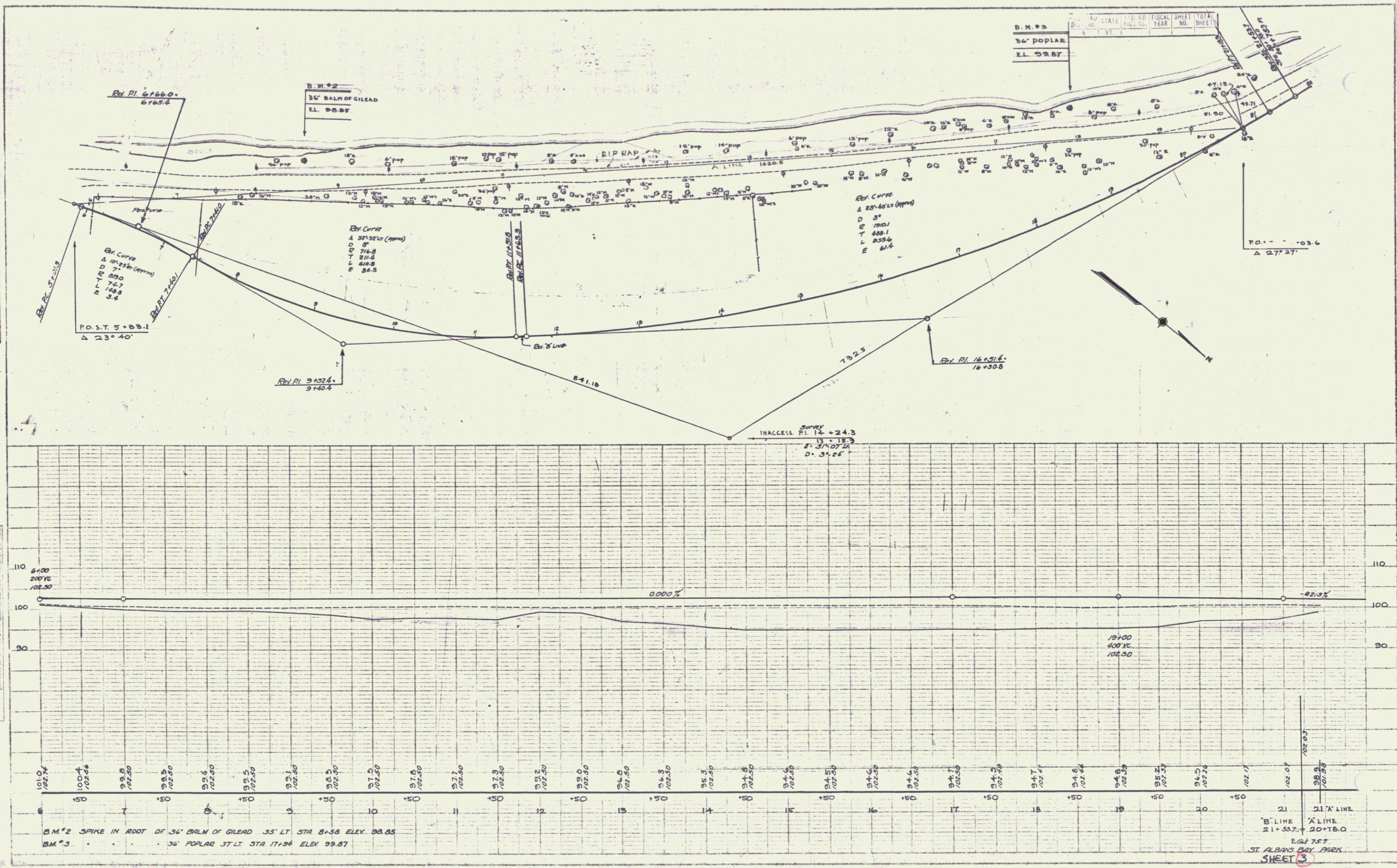
(To Be Returned to R.O.W. Division)
 Town of VT 36
 TOWN OF ST. ALBANS
 RIGHT-OF-WAY DIVISION



Surveyed by
 Designed by
 Drawn by D. MACCHI MAY 1934
 Traced by D. MACCHI MAY 1934
 Checked by
 Series No. 1 of 1 Filed Sheets

EMBERTON
 EMBERTON
 TRACED D. MACCHI 10/34

EMBERTON
 D. MACCHI 5/54



B' LINE 21+33.7
 A' LINE 20+18.0
 ELEV. 75.7
 ST. ALBANS DAY AREA
 SHEET 3

PLAN
 DATE: 5/64
 DRAWN BY: D. MACCHI
 CHECKED BY:

PLAN
 DATE: 5/64
 DRAWN BY: D. MACCHI
 CHECKED BY:

