

WOOD GUARD RAIL		
CULVERT STA.	LEFT	RIGHT
290+55	24	-
295+93	-	24

CABLE GUARD RAIL				
STA TO STA	LEN. R.	CONSTANT	PAY LENO.	
295+75-297+83	LT	208	40	248
298+35-299+71	LT	136	40	176

REINFORCED CONCRETE PIPE CULVERTS					
STATION	SIZE	LEN. R.	CONC. A	CR. R.	REIN. SIZE
294+95	18"	48'	1404	114	11#
295+93	18"	48'	1404	114	11#
297+69	18"	40'	1184	104	11#
304+65	18"	36'	1080	96	11#
290+55	15"	36'	1080	96	11#
299+79	10"	40'	1404	114	13#

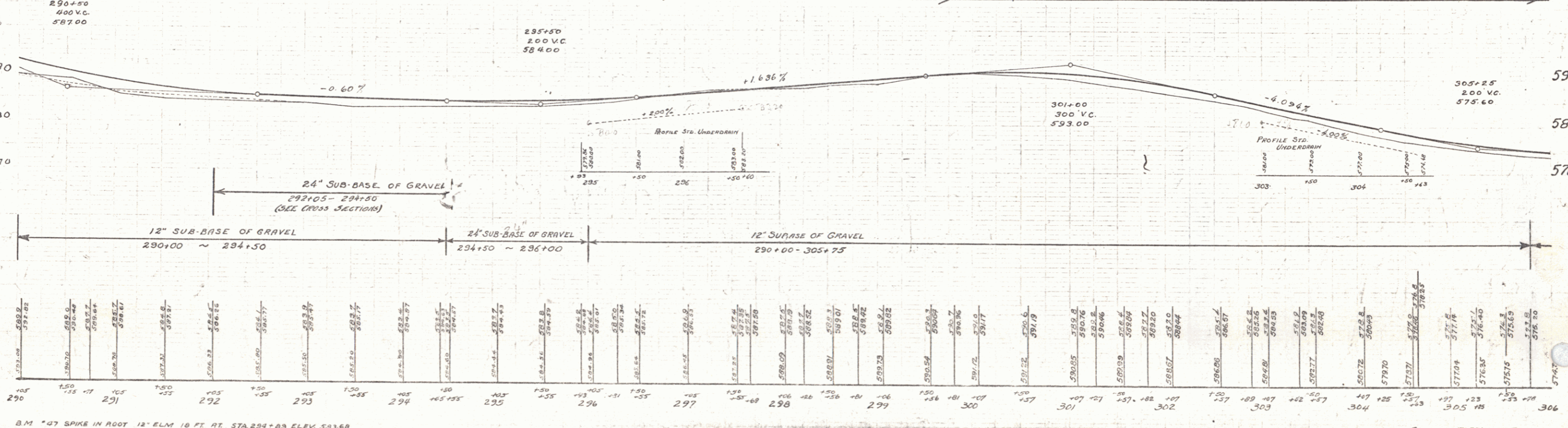
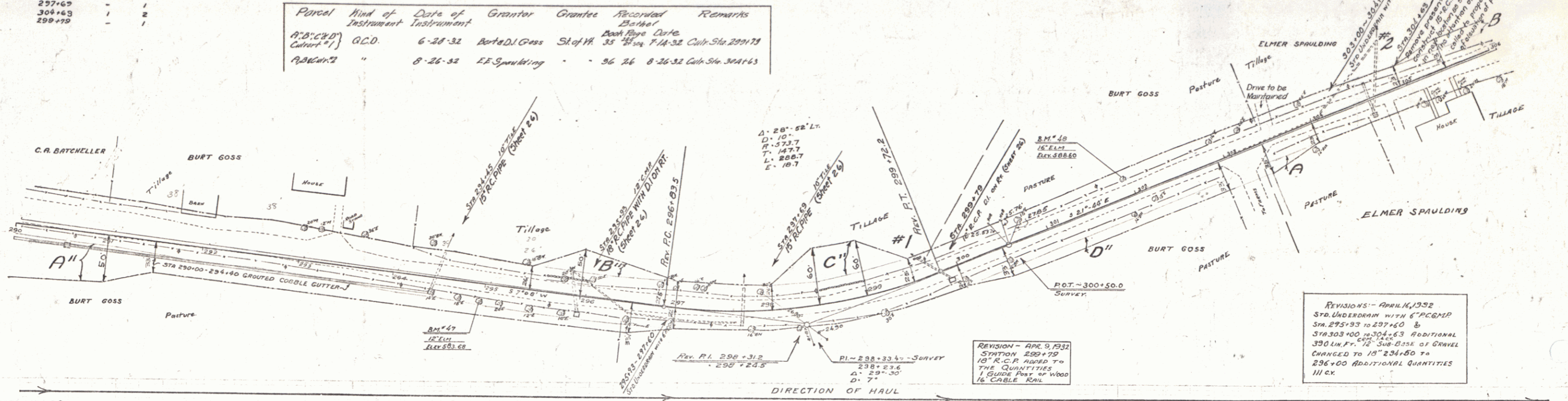
RELAYING PIPE CULVERTS					
STATION	LEN. R.	TYPE	SIZE	LEN. R.	CR. R.
303+03	RT	CONC	12"	54'	234'

GROUTED CORAL GUTTER				
STA TO STA	LEN. R.	LEN.	WIDTH	AREA
290+10-294+40	RT	440	3'	147.5'

GUIDE POSTS OF WOOD		
CULVERT STA.	LEFT	RIGHT
290+55	-	-
294+45	1	1
297+69	1	1
304+65	1	2
299+79	-	-

Parcel	Kind of Instrument	Date of Instrument	Grantor	Grantee	Recorded	Remarks
A. J. CHRY	G.C.D.	6-28-32	Burt D. Goss	St of W	35 4/104	7-14-32 Cul. Sta. 290+79
A. B. GARD	"	8-26-32	E. E. Spaulding	"	36 3/4	8-26-32 Cul. Sta. 304+65

STD. UNDERDRAIN WITH 6" P.C.M.P.				
STA TO STA	LEN. R.	LEN.	CR. R.	
295+93-297+40	RT	180	14.5	
303+00-304+65	RT	210	~	



B.M. #47 SPIKE IN ROOT 12" ELM 18 FT. RT. STA. 294+83 ELEV. 593.60
 B.M. #48 SPIKE IN ROOT 16" ELM 17.5 FT. LT. STA. 294+83 ELEV. 598.60