

QUICK POINTS OF WOOD  
CULVERT SPA LEFT RIGHT  
263+00 1 1

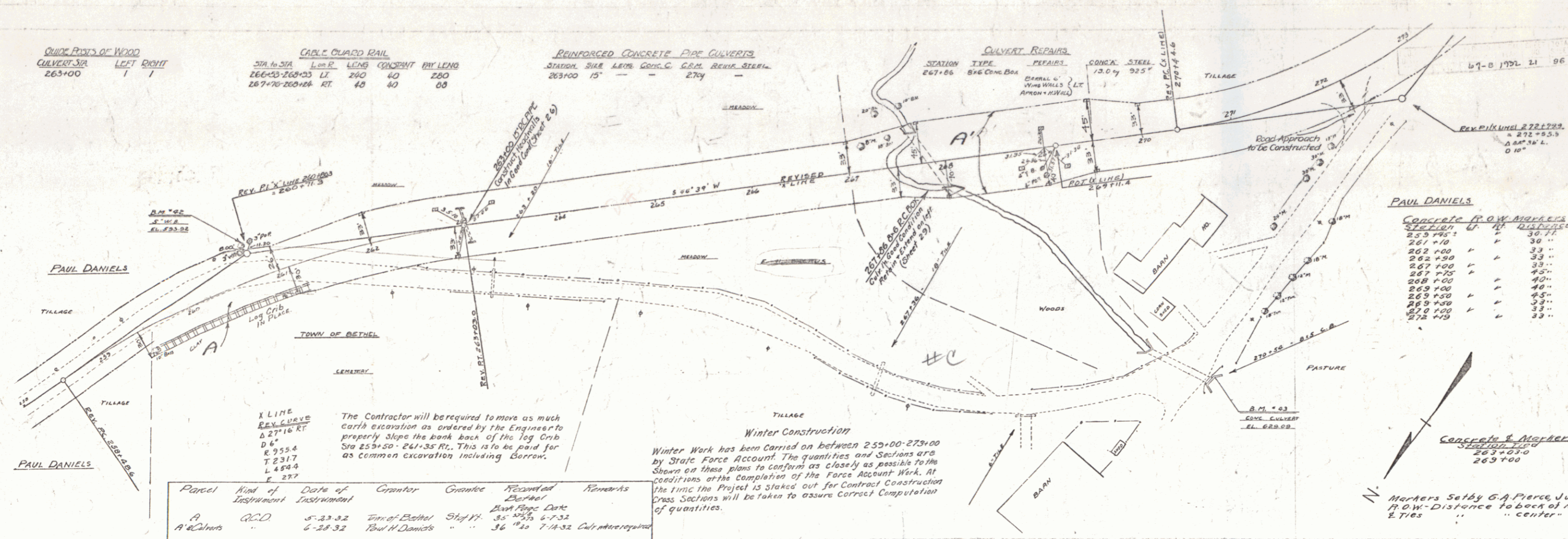
CABLE GUARD RAIL  
STA. TO STA. L. OF P. LENG. CONC. RT. LENG.  
266+53-269+33 LI 260 40 220  
267+70-269+26 RT. 40 40 00

REINFORCED CONCRETE PIPE CULVERTS  
STATION SPA LENG. CONC. C.C.M. REIN. STEEL  
263+00 15' - - 270' - -

CULVERT REPAIRS  
STATION TYPE REPAIRS  
267+85 8x6 CONC. BOX

CONC. STEEL  
13.0% 925'

67-8 1972 21 96

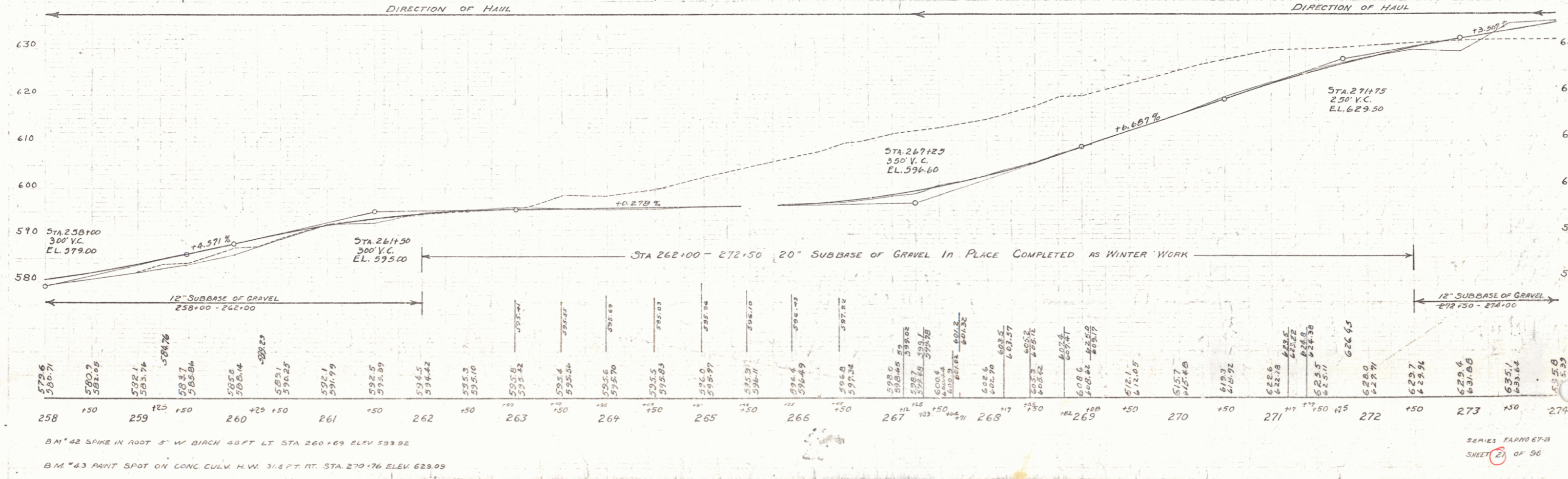


**X LINE REV. CURVE**  
 $\Delta 27^{\circ}16' RT$   
 $D 6'$   
 $R 255.4$   
 $T 231.7$   
 $L 459.4$   
 $E 27.7$

The Contractor will be required to move as much earth excavation as ordered by the Engineer to properly slope the bank back of the log curb Sta 255+50 - 261+35 Rt. This is to be paid for as common excavation including borrow.

Parcel	Kind of Instrument	Date of Instrument	Grantor	Grantee	Recorded	Remarks
A	A.C.D.	5-23-32	Town of Bethel	State	35	6-7-32
A & C	Deeds	6-28-32	Paul H. Daniels	"	36	7-14-32

**Winter Construction**  
 Winter Work has been carried on between 255+00-273+00 by State Force Account. The quantities and sections are shown on these plans to conform as closely as possible to the conditions at the completion of the Force Account Work. At the time the Project is staked out for Contract Construction Draw Sections will be taken to assure correct computation of quantities.



SERIES TAPNO 67-B  
SHEET 21 OF 96