

WOOD GUARD RAIL

CULVERT SIZE	LEFT ABUT	RIGHT ABUT
221+28	24	24
214+75	24	-

CABLE GUARD RAIL

STATION	LENG	CONSTANT	CHALLENGE
213+28-214+24	AT	296'	40
216+78-218+14	AT	136'	40
			176'

CORR GALV METAL PIPE CULVERTS

STATION	SIZE	LENG	CONC. A	MIN. STEEL	DIGRATED CMR
213+60	12"	108'	14.4'	106"	1.04'

REINFORCED CONCRETE PIPE CULVERTS

STATION	SIZE	LENG	CONC. A	MIN. STEEL	DIGRATED CMR
214+75	15"	120'	28.0'	222"	1

REINFORCED CONCRETE BOX CULVERT

STATION	LENG	CONC. A	MIN. STEEL	DIGRATED CMR
221+28	41.3'	20.74'	14.73'	

GALV WROUGHT IRON PIPE CULVERTS

STATION	SIZE	LENG
213+55	3"	108'

TO BE PAID FOR AS PRICE ACCT. ITEM

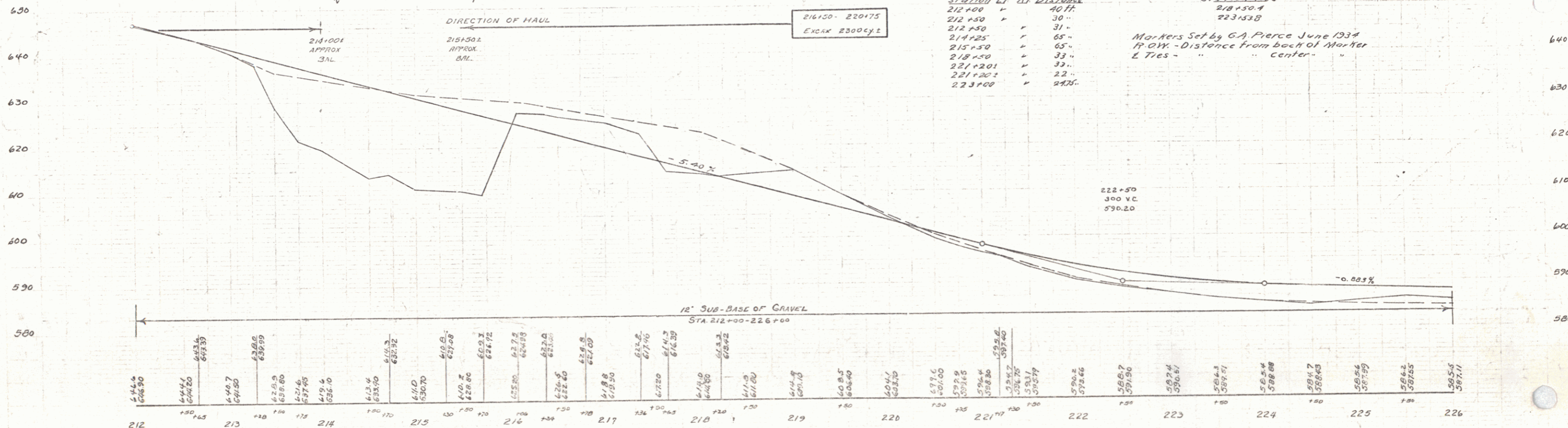
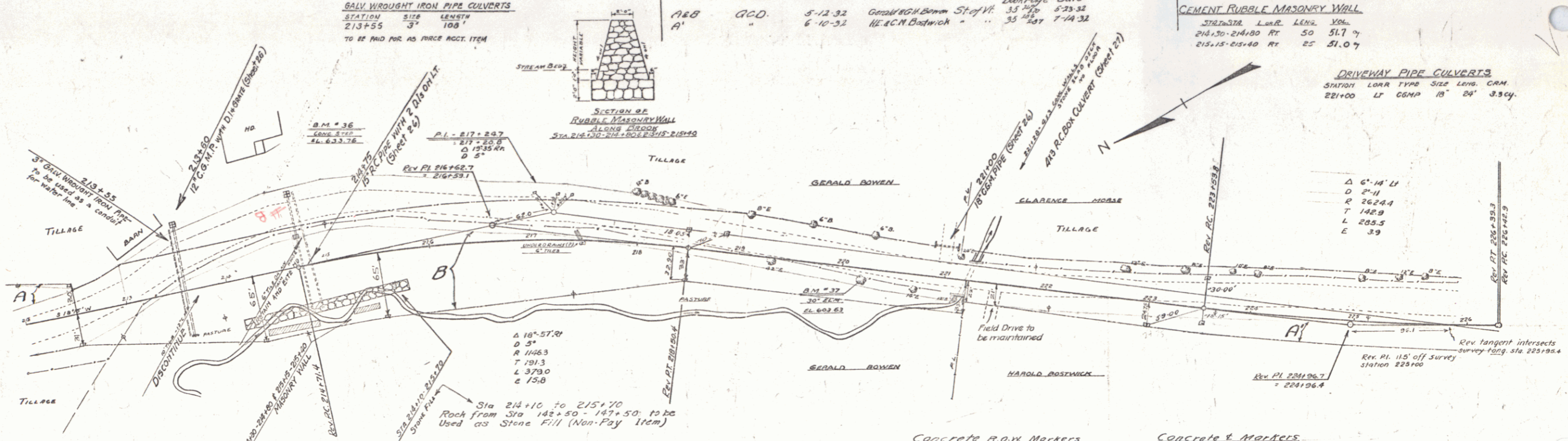
Parcel	Kind of Instrument	Date of Instrument	Grantor	Grantee	Recorded Book Page	Date	Remarks
A&B	G.C.D.	5-12-32	Genl Wm Bann	St of W	35	523.32	
A'		6-10-32	HEACN Bostwick		35	527	1-14-32

CEMENT RUBBLE MASONRY WALL

STATION	LENG	CONC. A	MIN. STEEL	DIGRATED CMR
214+20-214+80	AT	50'	51.7'	
215+15-215+40	AT	25'	51.07'	

DRIVEWAY PIPE CULVERTS

STATION	LENG	CONC. A	MIN. STEEL	DIGRATED CMR
221+00	LT COMP	13'	24'	3.34'



B.M. #36 PRINT SPOT ON CONC STEP 1/8 FT LT STA 214+64 ELEV 633.76
 B.M. #37 SPIKE IN ROOT 30" ELM .9 FT RT STA 220+21 ELEV 603.63

SERIES 2470-A-47-B
 SHEET 10 OF 96