

WOOD GRADE RAIL
 CULVERT STA. LEFT RIGHT
 209+50 - 24'

CABLE GRADE RAIL
 STA. TO STA. L. & R. LENG. CONST. DIST. LENG.
 209+10-210+46 LT 180' 80' 160'

REINFORCED CONCRETE PIPE CULVERTS
 STATION SIZE LENG. GRADE. CR. BR. STEEL
 205+02 (2) 15" 104' 3.5' 5" 5"
 210+27 18" 40' 1.5' 1.8' 15.7"

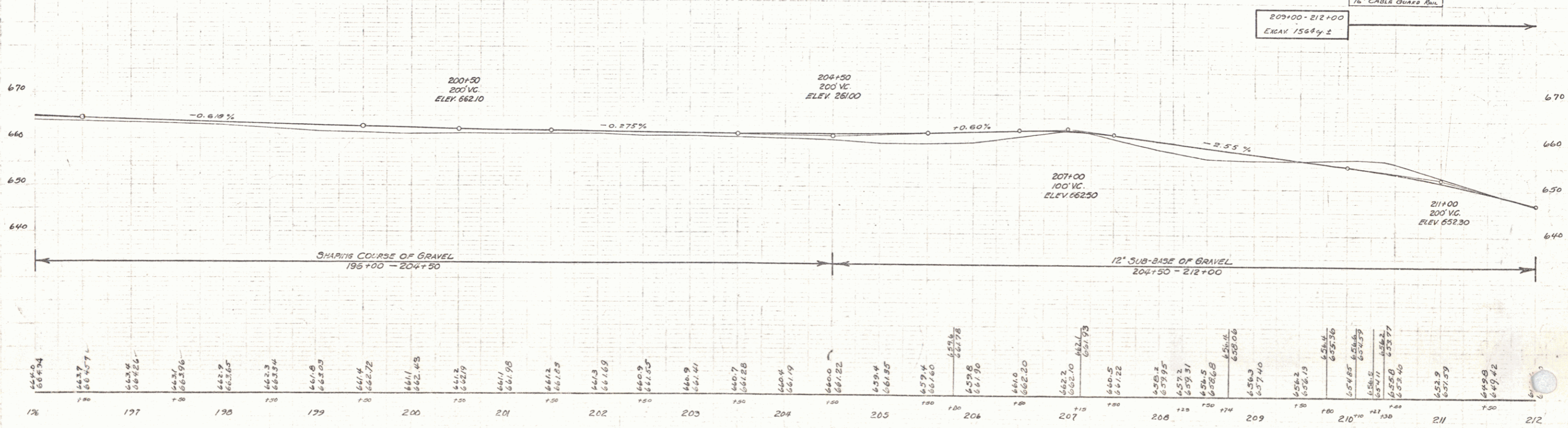
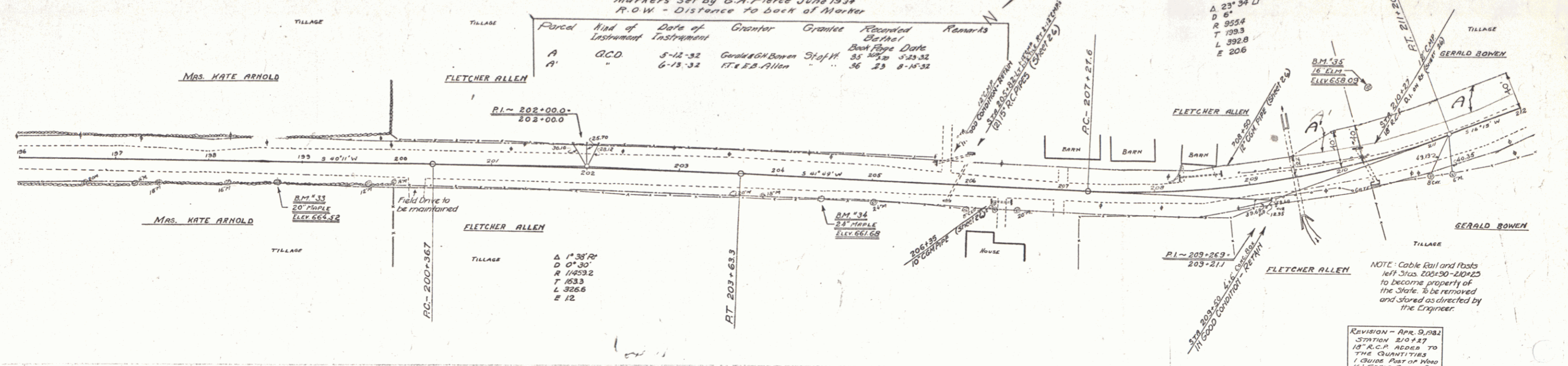
RELAYING PIPE CULVERTS
 STATION L. & R. DIST. LENG. CR. BR. STEEL
 206+35 RT COMP 10' 24' 23' 5"
 208+50 LT " 12' 44' 23'

GUIDE POSTS OF WOOD
 CULVERT STA. LEFT RIGHT
 205+02 L 1
 210+27 - 1

CONCRETE P. O. W. MARKERS
 STATION L. & R. DIST. LENG.
 209+50 L 23 FT
 210+08 L 40 "

Markers Set by G.A. Pierce June 1934
 R.O.W. - Distance to back of Marker

Parcel	Kind of Instrument	Date of Grant	Grantor	Grantee	Recorded Book Page	Remarks
A	G.C.D.	5-12-32	Gerald Bowen	Stef. H.	35 24, 25	5-23-32
A'	"	6-15-32	Mr. E.B. Allen	"	36 23	8-15-32



BM#33 SPIKE IN ROOT 20' MAPLE 20 FT RT STA. 198+71 ELEV. 664.52
 BM#34 SPIKE IN ROOT 24' MAPLE 135 FT RT STA. 204+44 ELEV. 661.69
 BM#35 SPIKE IN ROOT 16' LLM 70 FT LT STA. 210+51 ELEV. 658.03

15