

**WOOD GUARD RAIL**

CULVERT STA	LEET	RIGHT
146+54	-	24

**GUIDE POSTS OF WOOD**

CULVERT STA	LEET	RIGHT
136+14	-	1
140+20	-	1

**CABLE GUARD RAIL**

START STA	LEET	RIGHT	CONSTANT	PAYMENTS	
135+40	136+36	LT	36	40	136
140+50	142+56	LT	216	40	256
147+70	148+18	LT	48	40	88

**CONCRETE R.O.W. MARKERS**

STATION	LT	RT	DISTANCE
135+00	-	-	32 FT
136+00	-	-	40 "

**REINFORCED CONCRETE PIPE CULVERTS**

STATION	SIZE	CONC. A	CSN	REINF. STEEL
136+14	15"	32"	-	270#
141+00	12"	64"	1.5 cy	73#

**REINFORCED CONCRETE BOX CULVERTS**

STATION	SIZE	CONC. A	STEEL
140+54	3'x3'	26.3"	1653#

**DRIVEWAY PIPE CULVERTS**

STATION	LEET	RIGHT	SIZE	LEET	CON.
139+90	LT	66MP	12"	-	23cy

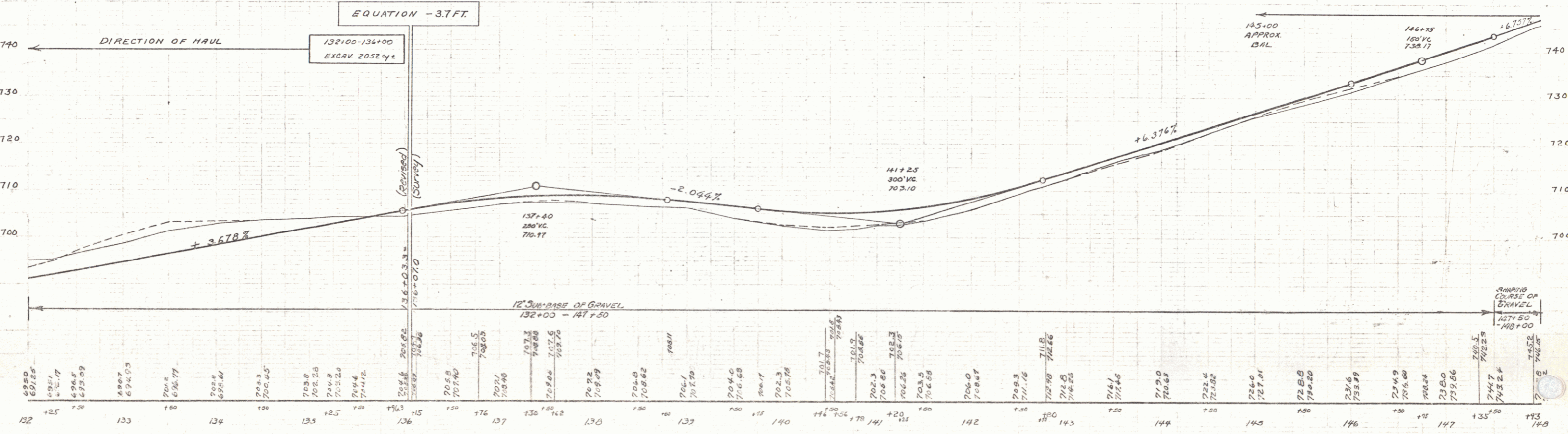
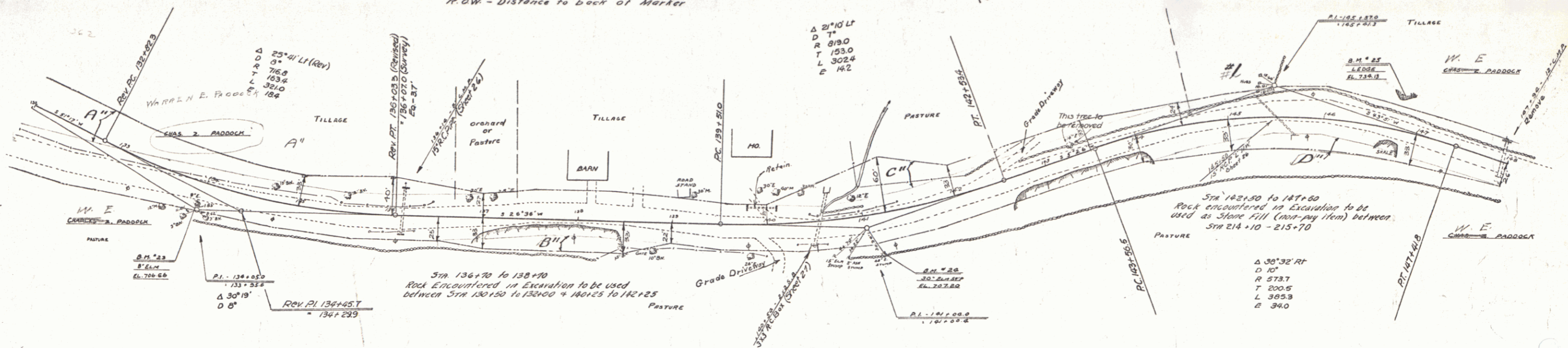
67-8 1922 13 90

Parcel	Kind of Instrument	Date of Instrument	Grantor	Grantee	Recorder	Remarks
A 8'x40' Culvert #1	OCD	7-14-32	W.E. Paddock	Stef #4	J.S. 379	7-14-32 Culvert Sta. 145+50

Markers Set by G.A. Pierce June 1934  
R.O.W. - Distance to back of Marker

Sta 140+25 to 142+25  
Rock from Sta 136+70 to 138+70  
to be used as Stone Fill (non-pay item)

Sta 142+50 to 147+50  
Rock encountered in Excavation to be used as Stone Fill (non-pay item) between Sta 214+10 - 215+70



BM #23 - Spike in Trunk of Elm - 24.3' Rt. Sta 133+97 - EL. 706.66  
BM #24 - " " 30' Elm Stump - 43' " " 141+14 - " 707.20  
B.M. #23 - Paint Spot on Levee - 32' Lt. " 146+18 - " 734.0

SERIES F.A.R. NO 678  
SHEET 13 OF 96

11