

WOOD GUARD RAIL

CONVERT STA	LEFT	RIGHT
102+96		24

COBLE GUARD RAIL

STA TO STA	LEN	CONSTANT	PIV. LENG.
102+60-100+12	18	63°	
103+26-111+00	176	40°	216'
111+80-113+00	120	40°	160'
111+10-112+10	100	40°	200'
113+60-117+12	352	40°	392'
118+10-117+82	232	40°	272'

REINFORCED CONCRETE PIPE CULVERTS

STATION	SIZE	LEN	CONC. GEM	BRIDGE STEEL
102+96	18"	40'	3.50	
112+56	15"	96'	2.7	

REINFORCED CONCRETE BOX CULVERTS

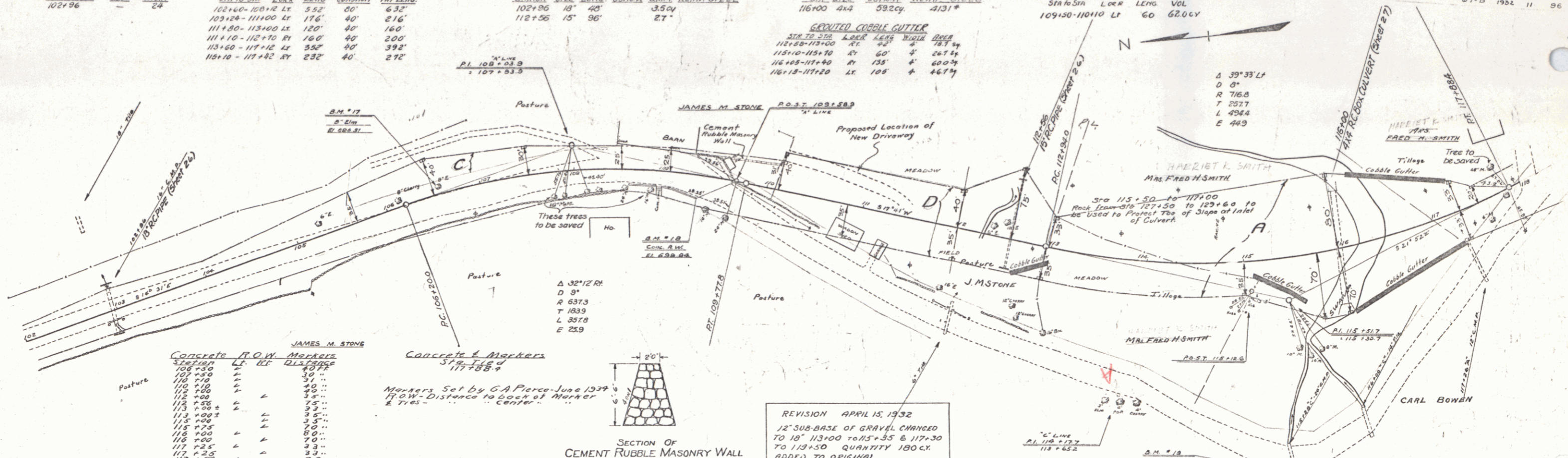
STA	SIZE	LEN	CONC.	BRIDGE STEEL
116+00	4x4	532.00	4131'	

CEMENT RUBBLE MASONRY WALL

STA	LEN	CONC.	BRIDGE STEEL
109+30-110+10	80'	62.00	

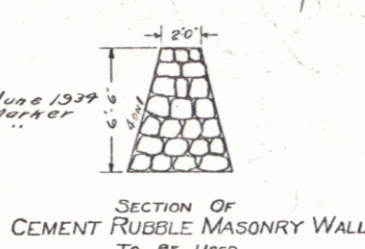
GRAVEL COBLE CUTTER

STA TO STA	LEN	CONSTANT	PIV. LENG.
112+80-113+00	20'	40°	18.7'
115+10-115+70	60'	40°	26.7'
116+10-117+40	30'	40°	13.7'
118+10-117+20	10'	40°	4.7'



CONCRETE T.O.W. MARKERS

STA	LEN	CONSTANT	PIV. LENG.
108+30	10'	40°	10.0'
109+30	10'	40°	10.0'
110+30	10'	40°	10.0'
111+30	10'	40°	10.0'
112+30	10'	40°	10.0'
113+30	10'	40°	10.0'
114+30	10'	40°	10.0'
115+30	10'	40°	10.0'
116+30	10'	40°	10.0'
117+30	10'	40°	10.0'
118+30	10'	40°	10.0'



REVISION APRIL 15, 1932
 12" SUB-BASE OF GRAVEL CHANGED TO 18" 113+00 TO 115+35 & 117+30 TO 119+50 QUANTITY 180 CY. ADDED TO ORIGINAL.

