

WOOD GUARD RAIL

CULVERT STA	LEFT RIGHT
89+25	26'
92+25	26'
93+10	26'

CABLE GUARD RAIL

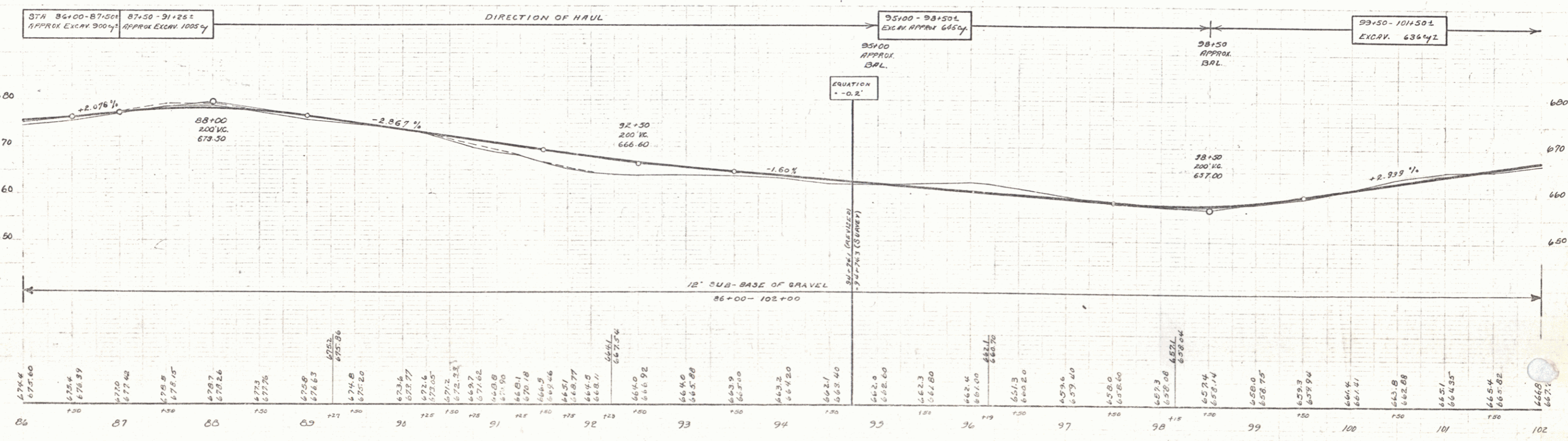
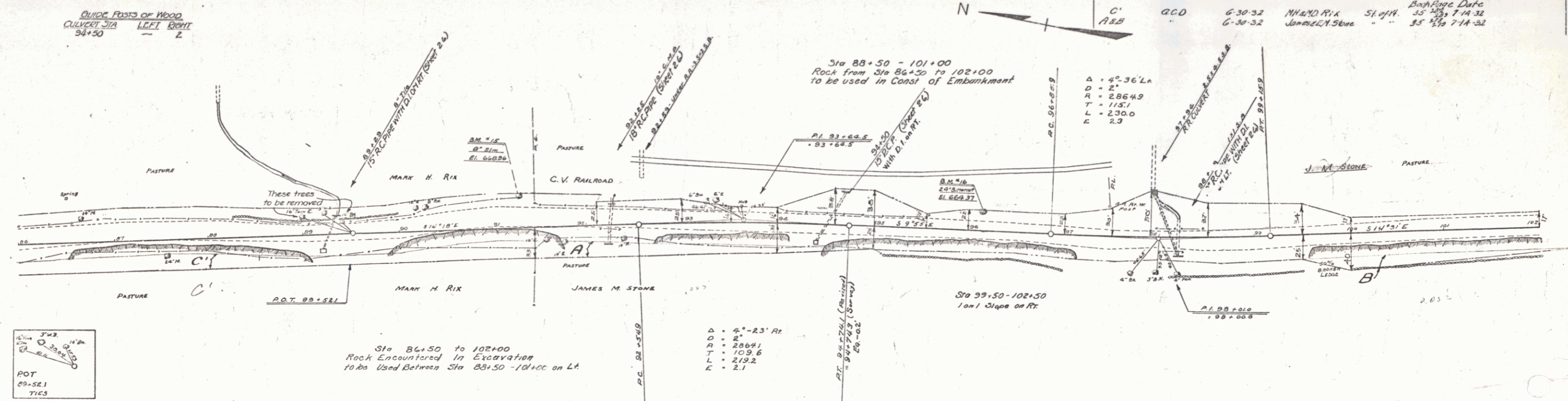
STA TO STA	LEN	CONSTANT	AT LENS
86+00-87+16	116'	20'	150'
88+10-89+50	120'	40'	160'
97+00-99+00	120'	40'	120'
97+12-100+00	128'	40'	120'

REINFORCED CONCRETE PIPE CULVERTS

STATION	SIZE	LEN	CONC.	CRM	ROD	STEEL
89+25	18"	36'	24cy			111#
92+25	18"	48'	28cy			111#
93+10	18"	72'	15'			151#
94+50	15"	60'	14cy			111#

NO.	DATE	STATE	PROJ. NO.	SHEET NO.	TOTAL SHEETS
1	6-7-32	VT	1982	70	96

Parcel	Kind of Instrument	Date of Instrument	Grantor	Grantee	Recorded From
C	CCD	6-30-32	MARK H. RIX	St. of H.	Book Page Date
A&B		6-30-32	James M. Stone		35 28 7-14-32
					35 30 7-14-32



B.M. #15 - SPIKE IN TRUNK 8" ELM - 24' LT - STA 91+27 - EL. 668.96
 B.M. #16 - " " " 24" BUTTERNUT - 17' LT - STA 96+14 - EL. 658.06

8