

CULVERT STA	LEFT	RIGHT
57+18	1	2
61+20	-	1
65+50	-	1
69+25	-	1
63+50	-	1

STA TO STA	LEN	CON	PAVLEN
60+80-61+76	LT	36'	136'
65+00-67+00	LT	200'	240'

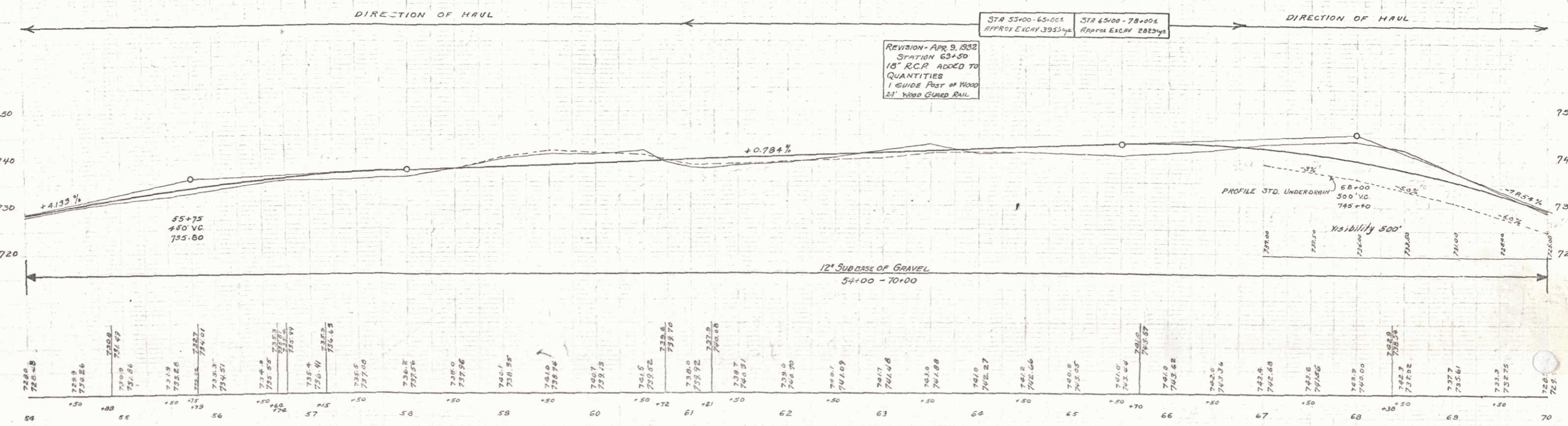
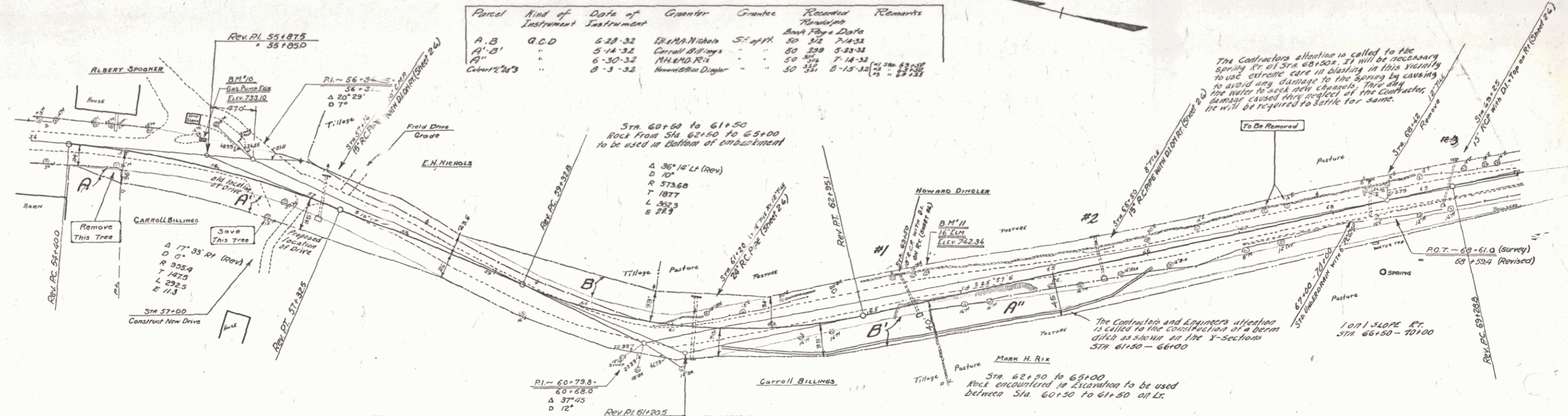
CULV. STA	LEN	RT
63+50	24'	-

STATION	SIZE	LEN	CONC	6" R.C.M.	REIN. STEEL
57+18	15"	44'	144'	144'	157'
61+20	21"	64'	-	-	59'
65+50	15"	36'	14'	14'	11'
69+25	15"	48'	14'	14'	157'
63+50	18"	48'	1.5'	1.8'	157'

STA TO STA	LEN	CON
67+00-70+00	Rt	300'

NO. 1017
SHEET 3 OF 3
SERIES FAP/10 67-B
CHEN OF 96

Parcel	Kind of Instrument	Date of Instrument	Grantor	Grantee	Recorded	Remarks
A.B.	G.C.D.	6-28-32	E.H. Nichols	St. A.H.	Book Page & Date	
A'-B'	"	5-14-32	Carroll Billings	"	50 312 5-23-32	
A''	"	6-30-32	M.H.M. Rix	"	50 314 7-18-32	
Carroll Billings	"	8-3-32	Howard Dimpler	"	50 314 8-15-32	



B.M. #10 - POINT SPOT ON CONC GAS PUMP FOUNDATION - 26' LT. - STA. 55+75 - EL. 733.10
B.M. #11 - SPIKE IN ROOT - 14' ELM. - 14' LT. - STA. 63+67 - EL. 742.34

SERIES FAP/10 67-B
CHEN OF 96