

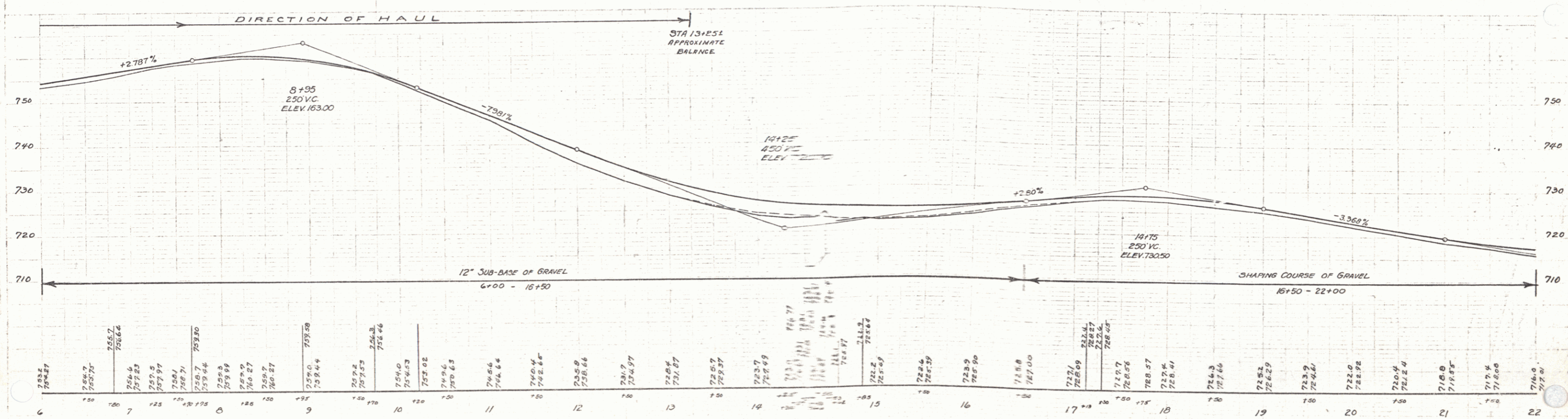
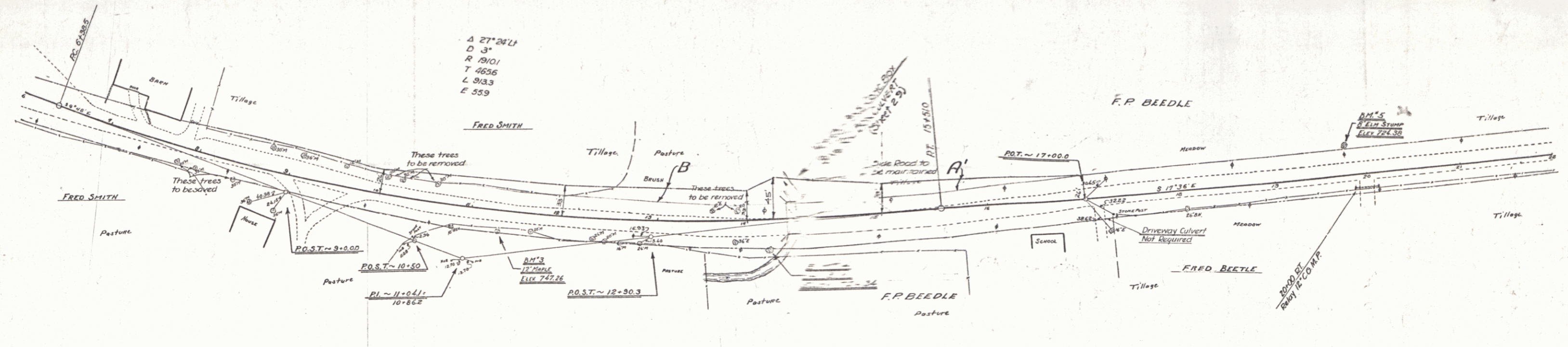
STA No.	LT	RT	CONSTANT	ARC LENGTH
13+00-14+70	LT	120'	40'	160'
13+00-14+08	RT	104'	40'	144'
13+13-14+15	LT	104'	40'	144'

**REINFORCED CONCRETE BOX CULVERTS**  
 STATION SIZE LOGICAL RADIUS STATION SIZE  
 14+25 8x6 52' 11" 4450' 50'

**DELAYING DRIVEWAY PIPE CULVERTS**  
 STA LxR TYPE SIZE LENGTH C.E.M.  
 20+00 RT CORR 12" 24" 2.5cy

67-B 1992 5 96

Force	Kind of Instrument	Date of Instrument	Grantor	Grantee	Remarks
B	O.C.D.	6-8-32	Fred and Smith	Sta 14	30' 11" 7'
A'	"	6-13-32	Fred and Smith	Sta 14	30' 11" 7'



BM #3 SPIKE IN TRUNK - 15' MAPLE - 21' RT - STA 11+29 -- EL. 747.26  
 BM #4 " " " - 18" BUTTERNUT - 32.5' RT - STA 14+17 -- " 724.34  
 BM #5 " " " - 18" ELM STUMP - 30' LT - STA 17+70 -- " 714.35

SERIES MAP NO. 67-B  
 SHEET 3 OF 96