

Sheet No.	Description
1	Title Sheet
2	Plan (20 Scale)
3	Profile & Typical Cross Section of Improvement
4	Plan & Elevation
5	Boring Log & General Notes
6	Earthwork Sheet
7	Quantity Sheet (Items & Drainage)
8	Bridge Quantities
9	Typical Superstructure Sections
10	Framing Plan
11	Superstructure Reinforcing Details
12	Retaining Wall # 5b 24+00
13	Details of Abutment #1
14	Details of Pier #1
15	Details of Abutment #2
16	Retaining Wall # 5a 27+00
17	Approach Slabs #1 & #2
18	Expansion Dam
19	Railing Details
20	Reinforcing Schedule
21	Cross Section Sheets
22	Channel Section Sheets
23	Standard Sheet SCB-D6-62
24	Standard Sheet SCB-D7-62
25	Standard Sheet SCB-D8-62
26	Standard Sheet SB-55-58 (sheets 1 & 2)
27	Standard Sheet B-5 (Slope Grading)
28	Standard Sheet C-1 (Curbs)
29	Standard Sheet C-2b (Cement Concrete Sidewalk)
30	Standard Sheet D-2 (Underdrain)
31	Standard Sheet D-4 (Special ACCGMP Elbow)
32	Standard Sheet D-8 (Reinforced Concrete Drop Inlet)
33	Standard Sheet D-9 (R.C.C.I w/ Granite Curb)
34	Standard Sheet E-2 (Barricades, Signs & Lights)
35	Standard Sheet G-3 (Three Cable Guard Rail)
36	Standard Sheet G-3a (Dead End Anchorage)
37	Standard Sheet J-1 (Project & Boundary Markers)

Extra Sheets Included in Record Plans.

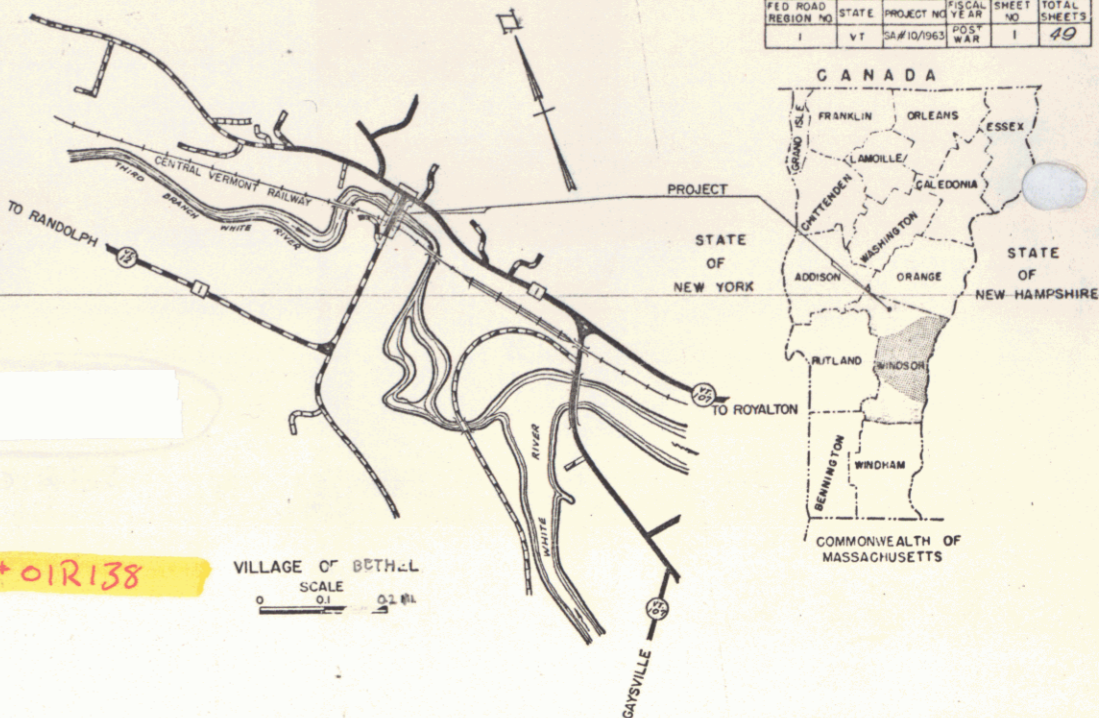
- 6A Final Earthwork
- 2 Sheets Borrow
- 4 Sheets Drainage
- 10 sheets Steel Plans
- 9 sheets Steel Prints
- 10 Misc. Sheets
- 14 Misc. Prints

STATE OF VERMONT
DEPARTMENT OF HIGHWAYS
PROPOSED IMPROVEMENT

TOWN OF BETHEL
COUNTY OF WINDSOR
BETHEL - RANDOLPH ROAD
VERMONT ROUTE 12

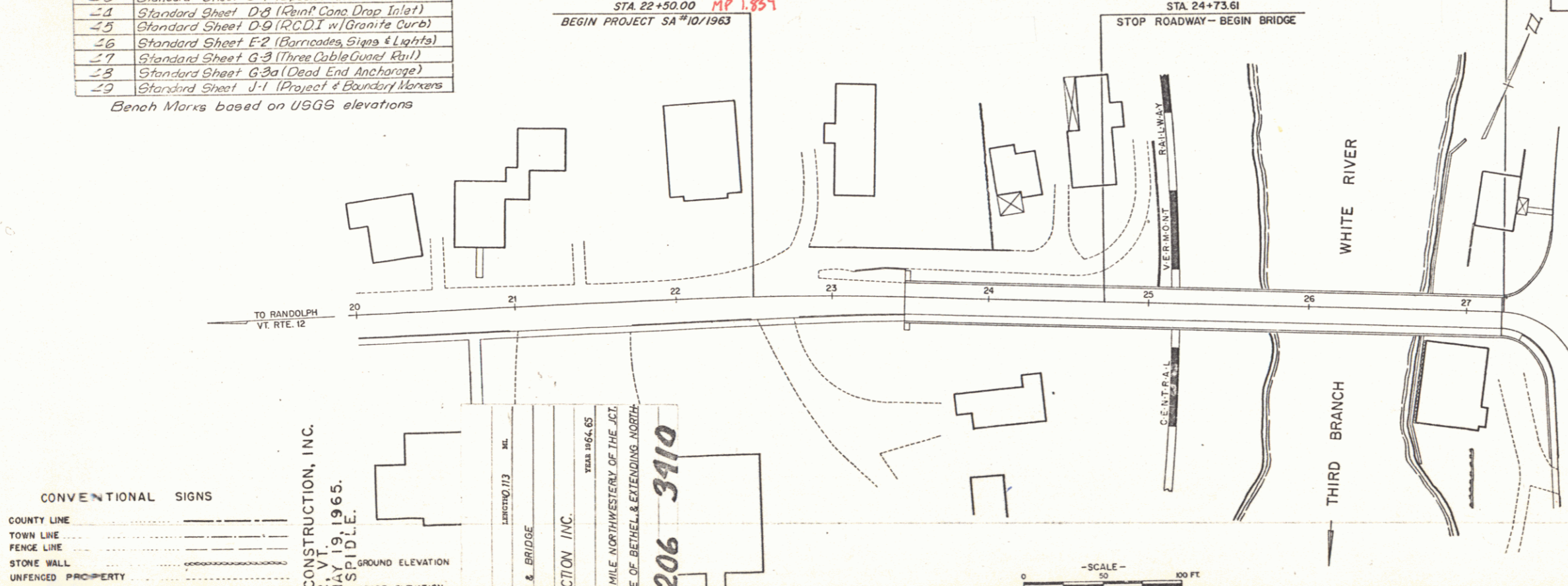
Beginning at a point approximately 0.42 of a mile northwesterly of the junction of Vermont Route 12 and Vermont Route 107, in the village of Bethel, and extending northeasterly 0.113 of a mile.

LENGTH OF ROADWAY - 350.49 FEET + 0.066 MILE
LENGTH OF BRIDGE - 249.51 FEET + 0.047 MILE
LENGTH OF PROJECT - 600.00 FEET + 0.113 MILE



PROJECT NAME & NUMBER	BETHEL SA 10/1963
TYPE PAVEMENT AREA	BIT. CONC. & BRIDGE 200 S.Y.
RECORD PLANS	

MATERIALS	
SUBBASE OF GRAVEL - WASHBURN PIT - BETHEL, VT.	
CONCRETE CLASS AA 8" R - D & D CONCRETE CO. - RANDOLPH, VT.	
BITUMINOUS CONCRETE & ASPH. ASPHALT COATING - L.M. PIKE & SON, INC. - WEST LEBANON, N.H.	
RUBBER JOINT MATERIAL - THITOCK, TOCH BROS. - NEW YORK, N.Y.	
REINFORCING STEEL - BETHLEHEM STEEL CO. - CAMBRIDGE, MASS.	
STEEL SUPERSTRUCTURE - VERMONT STRUCTURAL STEEL CO. - BURLINGTON, VT.	
REINFORCED CONCRETE PIPE - HUME PIPE CO. OF NEW ENGLAND - WINDSOR, VT.	
A.C.C.G. METAL PIPE - NEW ENGLAND METAL CULVERT CO. - WINDSOR, VT.	
STEEL GRATES - IRVING SUBWAY GRATING CO. - LONG ISLAND CITY, N.Y.	
GUARD RAIL CABLE - BETHLEHEM STEEL CO. - SPARROWS POINT, MD.	
BRIDGE RAILING - WARD WELLS - NEEDHAM HEIGHTS, MASS.	
BRIDGE PAINT - MASTER BRONZE POWDER CO. - CHICAGO HEIGHTS, ILL.	
CONTRACTOR - MILLER CONSTRUCTION, INC. - WINDSOR, VT.	
RESIDENT ENGINEER - DONALD MAYO.	
RECORD PLANS - A.G. SPIDLE.	
CONTRACT DATED - JUNE 12, 1964.	
STARTED - JUNE 22, 1964.	
COMPLETED - MAY 19, 1965.	
ACCEPTED - MAY 19, 1965.	



CONVENTIONAL SIGNS

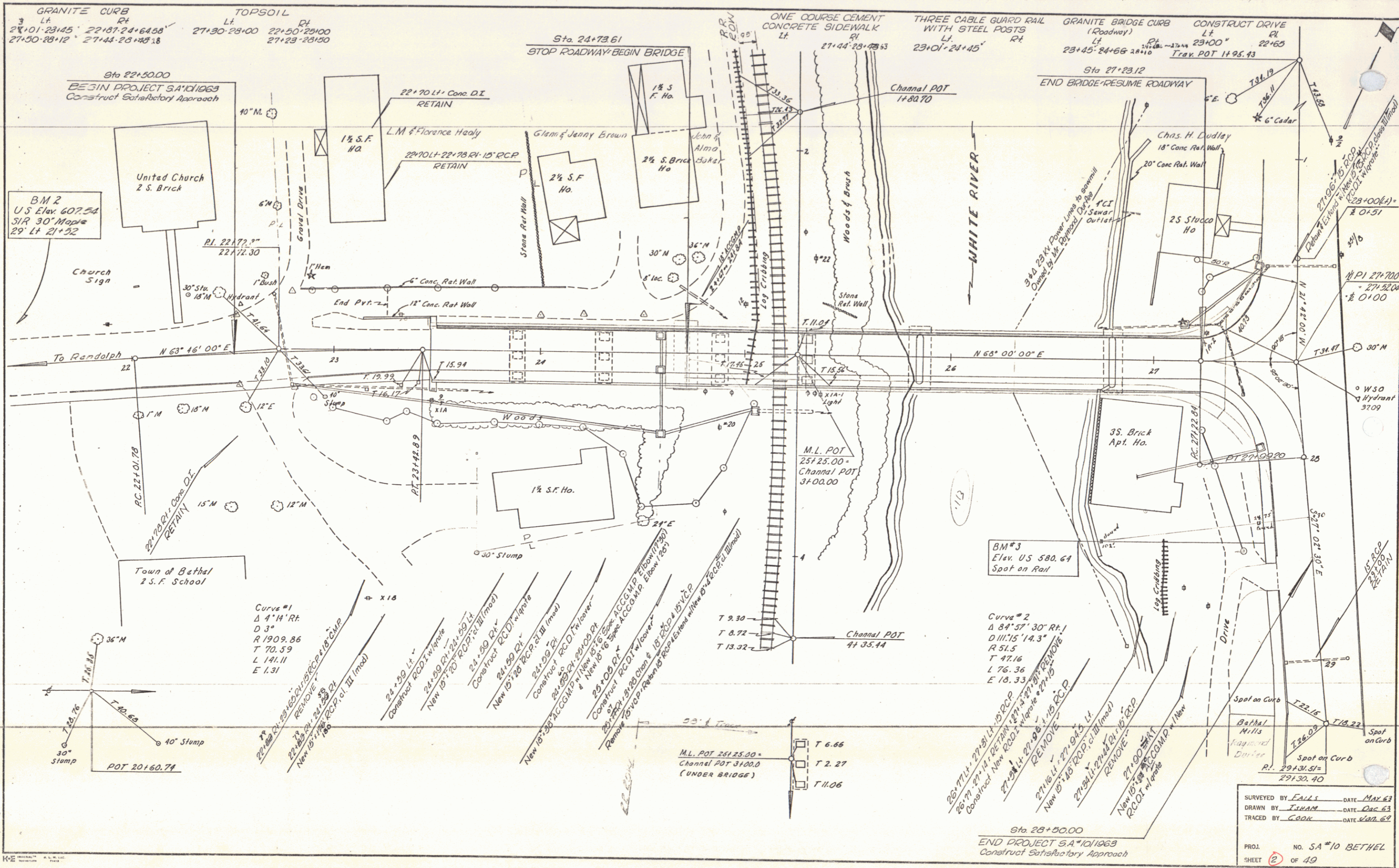
COUNTY LINE	---
TOWN LINE	---
FENCE LINE	---
STONE WALL	---
UNFENCED PROPERTY	---
GUARD RAIL	---
TRAVELED WAY	---
RAILROAD	---
RETAINING WALL	---
CENTER LINE	---
SURVEY LINE	---
CULVERT	---
DROP INLET	---
TROLLEY POLE	---
POWER POLE	---
TELEPHONE POLE	---
TREES	---
HEDGE	---

BETHEL SA 10/1963
CONTRACTOR - MILLER CONSTRUCTION, INC.
WINDSOR, VT.
TYPE BITUMINOUS CONCRETE PAVT. & BRIDGE
MILLER CONSTRUCTION INC.
WINDSOR, VT.
LOCATION BEGINNING AT A POINT 0.42 MILE NORTHWESTERLY OF THE JCT. OF VT. RTS. 12 & 107 IN THE VILLAGE OF BETHEL, & EXTENDING NORTHEASTERLY 0.113 MILE.
Bix 206 3910

THESE PLANS ARE SUBJECT TO SUCH REVISIONS AS MAY BE REQUIRED BY THE BUREAU OF PUBLIC ROADS OR THE COMMISSIONER OF HIGHWAYS.
CONSTRUCTION IS TO BE CARRIED ON IN ACCORDANCE WITH THE PLANS AND THE STANDARD SPECIFICATIONS FOR HIGHWAY AND BRIDGE CONSTRUCTION OF JANUARY 1956 SUBMITTED TO THE BUREAU OF PUBLIC ROADS AS APPROVED JULY 5, 1956, INCLUDING ALL SUBSEQUENT APPROVED REVISIONS AND SUCH REVISED SPECIFICATIONS AND SPECIAL PROVISIONS AS ARE SUBMITTED WITH THE PLANS.

APPROVED <i>[Signature]</i> DISTRICT ENGINEER DATE May 1, 1964	APPROVED <i>[Signature]</i> STONE WALKER DATE May 7, 1964	APPROVED <i>[Signature]</i> DISTRICT ENGINEER DATE May 7, 1964	APPROVED <i>[Signature]</i> HIGHWAY ENGINEER DATE May 7, 1964	APPROVED <i>[Signature]</i> CHIEF ENGINEER DATE May 7, 1964
--	---	--	---	---

RIGHT-OF-WAY DIVISION
TOWN FILE
PERPETUAL
Town of U-12
DEPARTMENT OF COMMERCE
BUREAU OF PUBLIC ROADS
APPROVED _____ DATE _____
PROJECT SA NO 10/1963
SHEET 1 OF 40 SHEETS



GRANITE CURB
 3 Lt. Rt.
 22+01-23+45 22+87-24+64.58 27+30-28+00 22+50-28+00
 27+50-28+12 27+44-28+48.18 27+23-28+50

Sta. 24+73.61
 STOP ROADWAY-BEGIN BRIDGE

ONE COURSE CEMENT CONCRETE SIDEWALK Lt. Rt. 27+44-28+73.63
 THREE CABLE GUARD RAIL WITH STEEL POSTS Lt. Rt. 23+01-24+45
 GRANITE BRIDGE CURB (Roadway) Lt. Rt. 23+45-24+66 28+10
 CONSTRUCT DRIVE Lt. Rt. 23+00 22+65
 Trax. POT 1495.43

Sta 27+23.12
 END BRIDGE-RESUME ROADWAY

BM#3
 Elev. US 580.64
 Spot on Rail

Curve #2
 Δ 84° 57' 30" Rt.
 D III.15' 14.3"
 R 51.5
 T 47.16
 L 76.36
 E 18.33

Sta 28+50.00
 END PROJECT S.A.#101063
 Construct Satisfactory Approach

SURVEYED BY FALLS DATE MAY 63
 DRAWN BY TSHAM DATE DEC 63
 TRACED BY COOK DATE JAN 64

PROJ. NO. SA #10 BETHEL
 SHEET 2 OF 19