

INDEX OF SHEETS

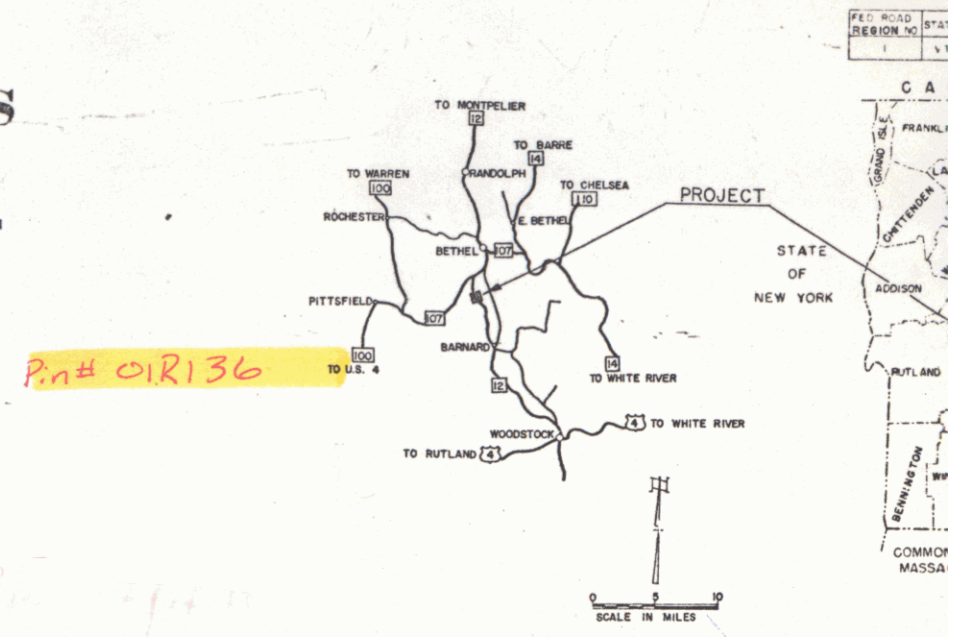
SHEET NO.	1	TITLE PAGE
	2	TYPICAL CROSS-SECTION OF IMPROVEMENT
	3	QUANTITY (ITEMS AND DRAINAGE)
	4	EARTHWORKS
	5	PLAN AND PROFILE
	6	PRELIMINARY INFORMATION (BRIDGE)
	7	SUPERSTRUCTURE DETAILS
	8	SUBSTRUCTURE DETAILS
	9	BRIDGE STANDARD SB 20-56
	10	BRIDGE STANDARD SB 50-1
	11	REINFORCING STEEL SCHEDULE
	12	ROADWAY STANDARD RS 56-1 (BANKING)
	13	ROADWAY STANDARD RS 56-2 (DROP INLETS)
	14	ROADWAY STANDARD RS 56-3 (MARKERS)
	15	ROADWAY STANDARD RS 56-4 (HEADWALLS)
	16	ROADWAY STANDARD RS 56-6 (SLOPING)
	17	ROADWAY STANDARD RS 56-11 (THREE CURB GUARD RAILS WITH STEEL POSTS)
	18	ROADWAY STANDARD RS 56-12 (BARRICADES, SIGNS & LIGHTS)
	19	ROADWAY STANDARD A-61 (DRILLING AND BENCHING)
	20	ROADWAY STANDARD G-4 (STEEL MARKERS)
	21-34	CROSS SECTIONS

STATE OF VERMONT
DEPARTMENT OF HIGHWAYS

PROPOSED IMPROVEMENT

FEDERAL PROJECT

TOWN OF BARNARD
COUNTY OF WINDSOR
VERMONT ROUTE 12
WOODSTOCK-BETHEL ROAD



PROJECT NAME & NUMBER TYPE PAVEMENT AREA
BARNARD DF 035-1(2) DOUBLE TACK COAT OF BITUMINOUS MATERIAL WITH PEA STONE & STONE 2454 SY
GRITS SEAL, PRIME COAT OF REFINED TAR & DOUBLE SEAL COAT OF CUTBACK ASPHALT

RECORD PLANS MATERIALS

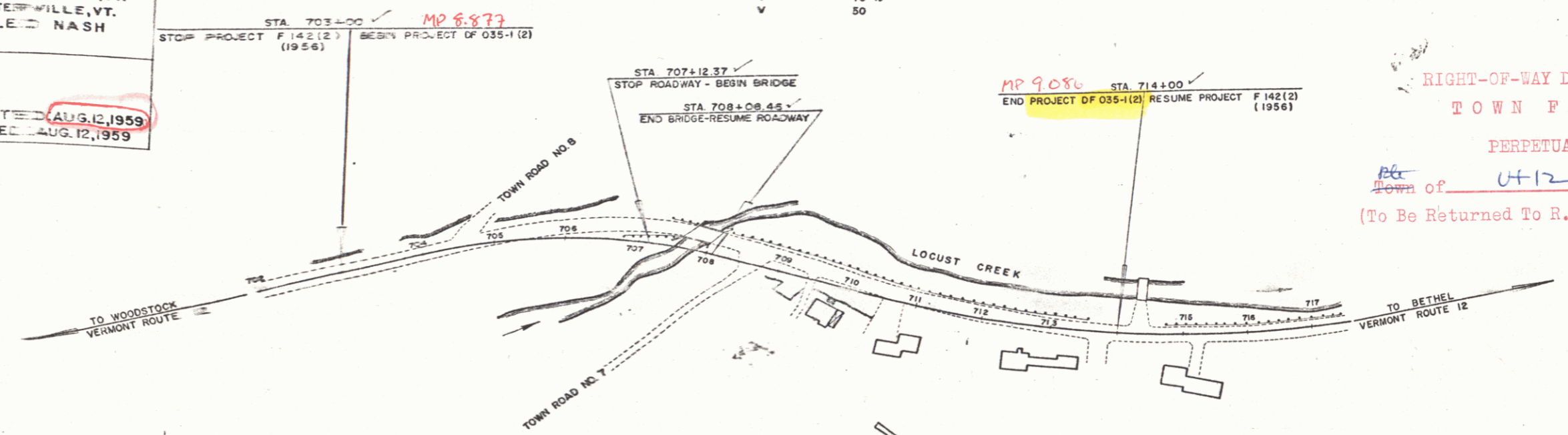
SUBBASE OF GRAVEL: LA COUNT RIVER BAR, BETHEL, VT.
ACCOMP: NEW ENGLAND METAL PIPE CO., WHITE RIVER JCT., VT.
BIT. MATERIAL: MOBIL OIL CO., E. PROVIDENCE, R.I. & KOPPERS PROD. CO., EVERETT, MASS.
CONCRETE: MILLER TRANSIT MIX, WEST LEBANON, N.H.
GUARD RAIL & CABLE: S.T. GRISWOLD CO., ESSEX JCT., VT.
REINFORCING STEEL: VERMONT STRUCTURAL STEEL CORP., BURLINGTON, VT.
BIT. CONC. PAVEMENT: WELLS-LANSON QUARRY CO. INC., WESTERLY, VT.
STRUCTURAL STEEL & SPIRAL REINFORCEMENT: A. LEON NASH STEEL CORP., PITTSFIELD, MASS.

CONTRACTOR: OLSON CONSTR., MONTPELIER, VT.
RESIDENT ENGR.: A.C. DAVIS, F.E. ALDRICH, R.M. ARONSON
RECORD PLANS: WASHBURN
CONTRACT DATED: JULY 29, 1958 CONTRACT COMPLETED: **AUG. 12, 1959**
CONTRACT STARTED: SEPT. 26, 1958 CONTRACT ACCEPTED: **AUG. 12, 1959**

BEGINNING AT A POINT 3,819.0 FEET SOUTHERLY OF THE BARNARD-BETHEL TOWN LINE AND EXTENDING NORTHERLY 1,100.0 FEET.

LENGTH OF ROADWAY 1,003.91 FEET = 0.190 MILE ✓
LENGTH OF BRIDGE 96.09 FEET = 0.018 MILE ✓
LENGTH OF PROJECT 1,100.0 FEET = 0.208 MILE ✓

1955 ADT	300
1950 ADT (EST)	510
D.V.	100
D	80%
T	10%
V	50



RIGHT-OF-WAY DIVISION
TOWN FILE
PERPETUAL
Town of U-12
(To Be Returned To R.O.W. Division)

ROW COUNTY TOWN LINE FENCE LINE STONE UNFENCED GUARD RAILROADS RETAINMENT CENTER SURVEY CULVERT DROP IN TROLLEY POWER TELEPHONE TREES HEDGE

PROJECT BARNARD
TOWN DF 035-1(2)
TYPICAL DOUBLE TACK COAT OF BITUMINOUS MATERIAL WITH PEA STONE & STONE GRITS SEAL, PRIME COAT OF REFINED TAR AND DOUBLE SEAL COAT OF CUTBACK ASPHALT
CONTRACTOR: OLSON CONSTR., MONTPELIER, VT.

LOCATION: BEGINNING AT A POINT 3,819.0 FEET SOUTHERLY OF THE BARNARD-BETHEL TOWN LINE AND EXTENDING NORTHERLY 1,100.0 FEET

BARNARD DF 035-1(2)
CONTRACTOR: OLSON CONSTR.
RECORD PLANS: WASHBURN
COMPLETION DATE: **AUG. 12, 1959**

GROUND ELEVATION	DATUM	FT.
GRADE ELEVATION	DATUM	FT.
CURVE DATA		
DEFLECTION ANGLE	A	
DEGREE OF CURVE	D	
RADIUS OF CURVE	R	
TANGENT DISTANCE	T	
LENGTH OF CURVE	L	
EXTERNAL DISTANCE	E	
POINT OF CURVATURE	PC	
POINT OF TANGENCY	PT	
POINT ON TANGENT	PT	
POINT ON SUB-TANGENT	POT	
POST		

SCALES

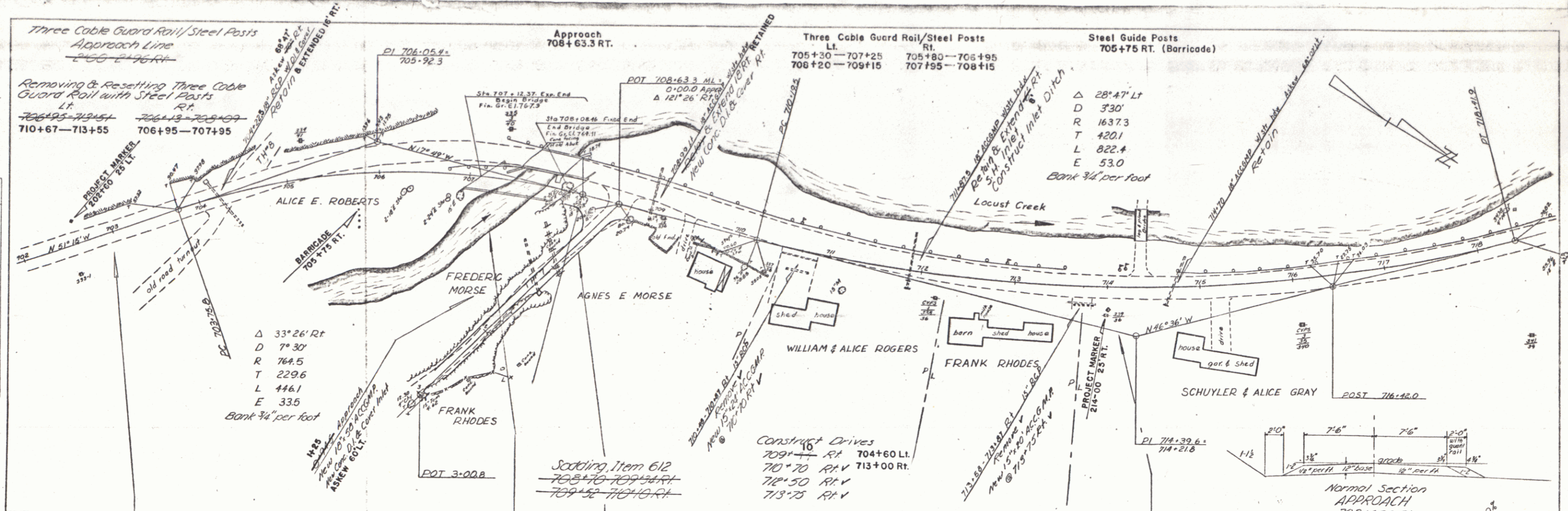
TITLE	1" = 100'
TYPICAL	1" = 2'
PLAN	1" = 50'
PROFILE HORIZONTAL	1" = 50'
PROFILE VERTICAL	1" = 10'
CROSS-SECTIONS	1" = 5'

APPROVED SECONDARY ENGINEER	APPROVED SUPERVISOR ENGINEER	APPROVED SURVEY ENGINEER	APPROVED DISTRICT ENGINEER	APPROVED HIGHWAY ENGINEER	APPROVED CHIEF ENGINEER	DEPARTMENT BUREAU OF HIGHWAYS
DATE July 2, 1958	DATE July 1, 1958	DATE July 1, 1958	DATE July 1, 1958	DATE 7/1/58	DATE July 2, 1958	PROJECT D.F. NO.
SUBMITTED BY ORDER OF THE STATE HIGHWAY BOARD						SHEET 1 OF 2

NOTE: ANY FURTHER FINAL QUANTITIES ARE RELATIVE TO THIS SET EITHER THE FIELD OR

THESE PLANS ARE SUBJECT TO SUCH REVISIONS AS MAY BE REQUIRED BY THE BUREAU OF PUBLIC ROADS OR THE COMMISSIONER OF HIGHWAYS.

CONSTRUCTION IS TO BE CARRIED ON IN ACCORDANCE WITH THE PLANS AND THE STANDARD SPECIFICATIONS FOR HIGHWAY AND BRIDGE CONSTRUCTION OF JANUARY 1958 SUBMITTED TO THE BUREAU OF PUBLIC ROADS AS APPROVED JULY 5, 1956 INCLUDING ALL SUBSEQUENT APPROVED REVISIONS AND SUCH REVISED SPECIFICATIONS AND SPECIAL PROVISIONS AS ARE SUBMITTED WITH THE PLANS.



PLAN

DATE: 10/15/09

BY: [Signature]

SCALE: 1" = 40'

NOTE: BOOK & MAPS CHECKED.

NO.:

PROFILE

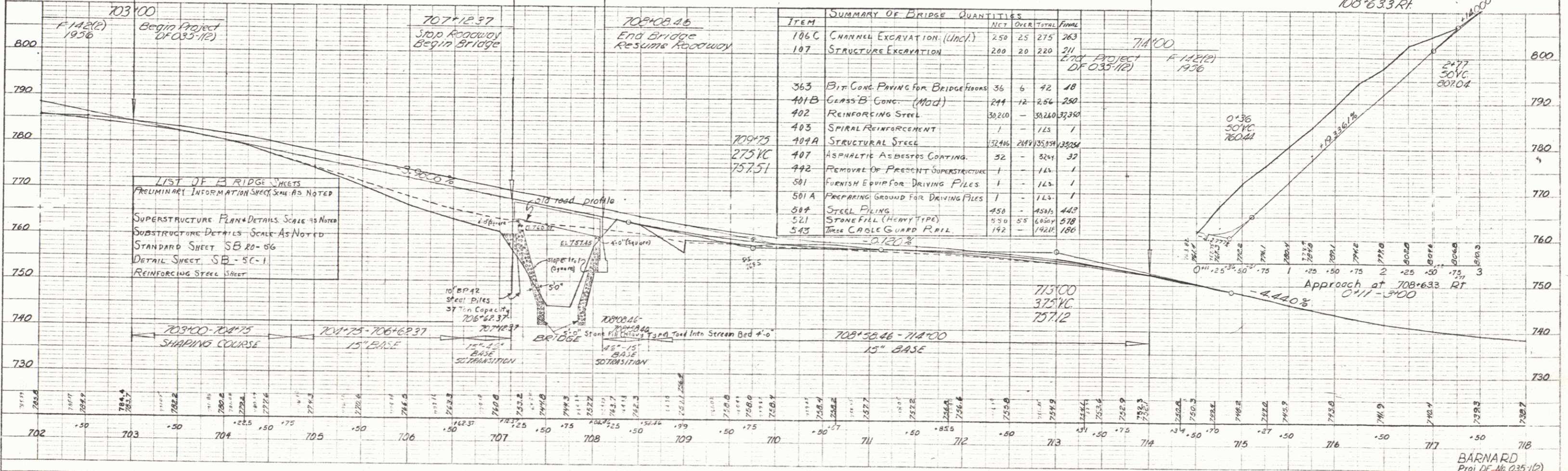
DATE: 10/15/09

BY: [Signature]

SCALE: 1" = 40'

NOTE: BOOK & MAPS CHECKED.

NO.:



BARNARD
Proj. No. 035-1(2)
Sheet 5 of 34