

INDEX OF SHEETS

SHEET NO. 1 TITLE PAGE

2 TYPICAL CROSS-SECTION OF IMPROVEMENT } *ORIGINAL MADE-IN-PLACE*
 3 SIGNAGE AND PLYING TABLES } *STANDARD*

4-10 PLAN AND PROFILE SHEETS

11 STANDARD STRUCTURE SHEET 5-28 *PIPE CULVERTS*

12 " " " " 5-29 *BOX CULVERTS*

13 " " " " 5-30 *GRADE RAISE*

14 *BARICADES SIGNS AND LIGHTS 58-11*

15-36 *CROSS SECTIONS*

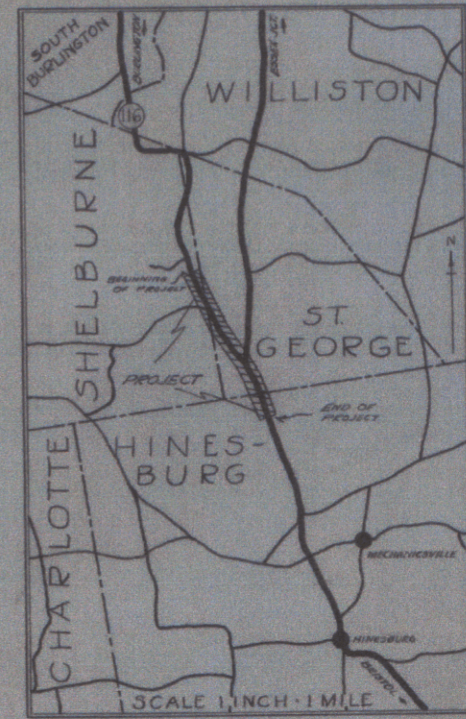
STANDARD SHEETS 3-28 AND 3-29 APPROVED BY THE CHIEF ENGINEER ON JULY 15, 1934.
 STANDARD SHEET 3-30 APPROVED BY THE CHIEF ENGINEER ON AUG. 13, 1934.

FED. ROAD DIST. NO.	STATE	U.S.G. PROJ. NO.	YEAR	SHEET NO.	TOTAL SHEETS
8	VT.	140-B	1934	1	36

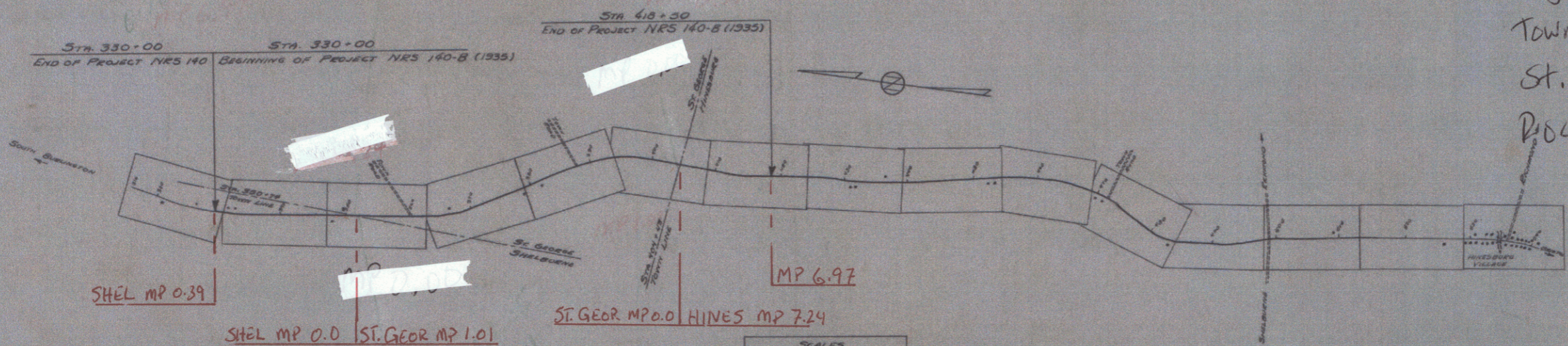
**STATE OF VERMONT
 STATE HIGHWAY DEPARTMENT**

**PLAN AND PROFILE OF PROPOSED
 STATE HIGHWAY**
 U. S. PUBLIC WORKS SECONDARY HIGHWAY PROJECT

TOWNS OF SHELBURNE, ST. GEORGE, HINESBURG
 BURLINGTON-BRISTOL ROAD
 FROM OPPOSITE THE RESIDENCE OF FRANK MAXWELL
 SOUTHERLY 1.676 MILES TO 1407 FEET SOUTH OF
 THE ST. GEORGE-HINESBURG TOWN LINE
 LENGTH OF PROJECT = 8850.0 FT.
 = 1.676 MILES



PIN #: **DIR 126**
 Proj. #: **NRS 140B**
 Towns: Shelburne,
 St. George and Hinesburg
 Route: **VT 116**



APPROVED: *Aug. 13, 1934*
H. E. Sargent
 COMMISSIONER OF HIGHWAYS
 SUBMITTED BY ORDER OF THE STATE HIGHWAY BOARD

CONVENTIONAL SIGNS

COUNTY LINE	GROUND ELEVATION
TOWN LINE	FENCE LINE
STONE WALL	UNFENCED PROPERTY
GUARD RAIL	TRAVELED WAY
RAILROAD	RETAINING WALL
CENTER LINE	SURVEY LINE
CULVERT	DROP INLET
TROLLEY POLE	POWER POLE
TELEPHONE POLE	TREES
HEDGE	

CURVE DATA

DEFLECTION ANGLE	Δ
DEGREE OF CURVE	D
RADIUS OF CURVE	R
TANGENT DISTANCE	T
LENGTH OF CURVE	L
EXTERNAL DISTANCE	E
POINT OF INTERSECTION	P. I.
POINT OF CURVE	P. C.
POINT OF TANGENT	P. T.
POINT ON TANGENT	P. O. T.

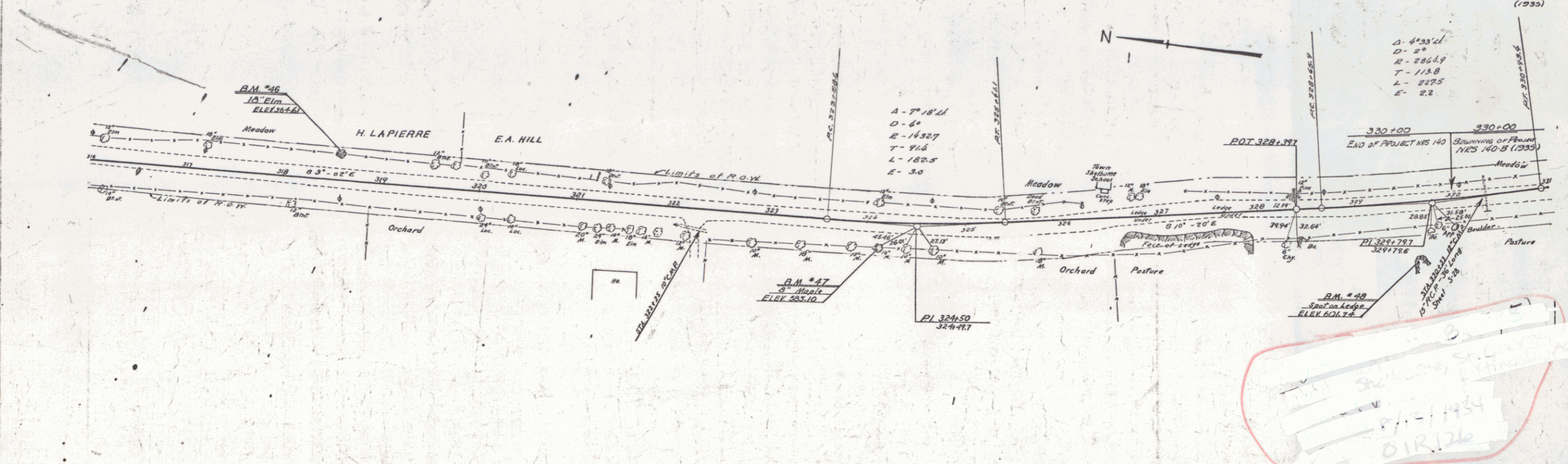
SCALES

TITLE	1" = 1000'
PLAN	1" = 50'
PROFILE	1" = 10'
CROSS SECTIONS	1" = 5'

Note--
 These plans are subject to such revisions as may be required by the Bureau of Public Roads or the Commissioner of Highways.
 Construction is to be carried on in accordance with the standard road and bridge specifications of 1934 with all subsequent approved revisions and such specifications and special provisions as are submitted with the plans.
 Attention of Contractors is called to the fact that the State Highway Board reserves the right to extend this project southerly at the same contract prices. Said cost of extension not to exceed 25% of the amount of contract.

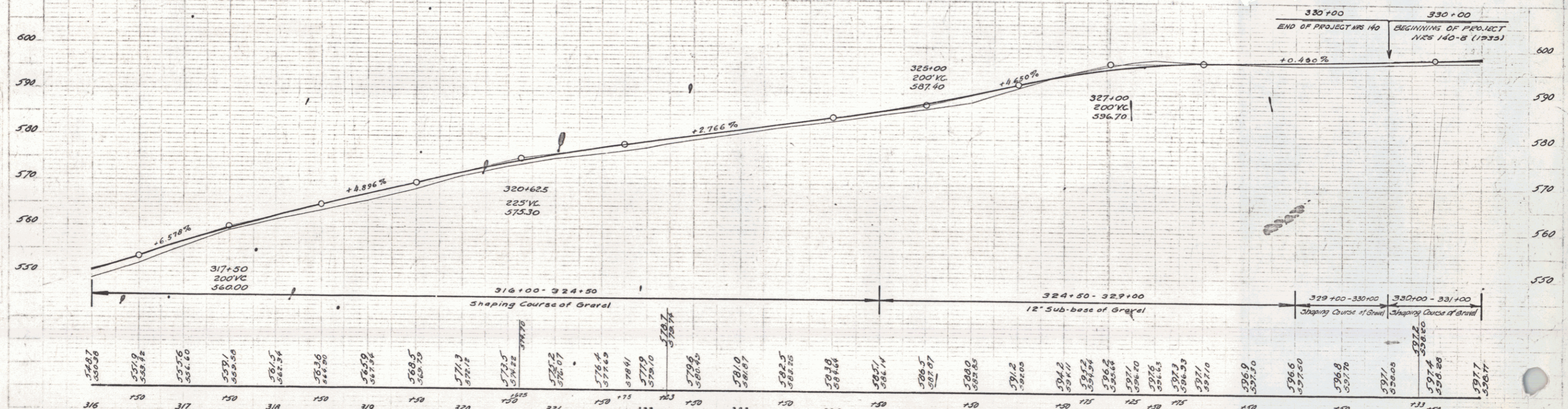
RECOMMENDED _____
 DISTRICT ENGINEER BUREAU OF PUBLIC ROADS
 RECOMMENDED FOR APPROVAL _____
 CHIEF ENGINEER BUREAU OF PUBLIC ROADS
 APPROVED _____
 DIRECTOR - BUREAU OF PUBLIC ROADS

CORRECTED: *Aug 22 1934*
H. E. Sargent
 SERIES NRS NO. 140-B FILED
 SHEET 1 OF 36



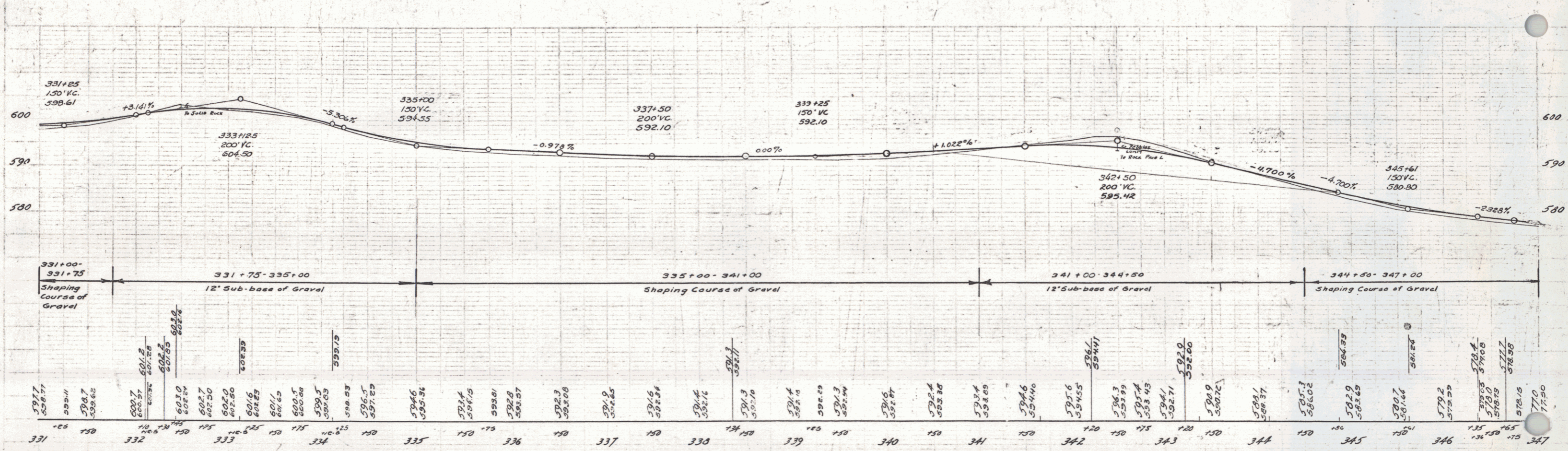
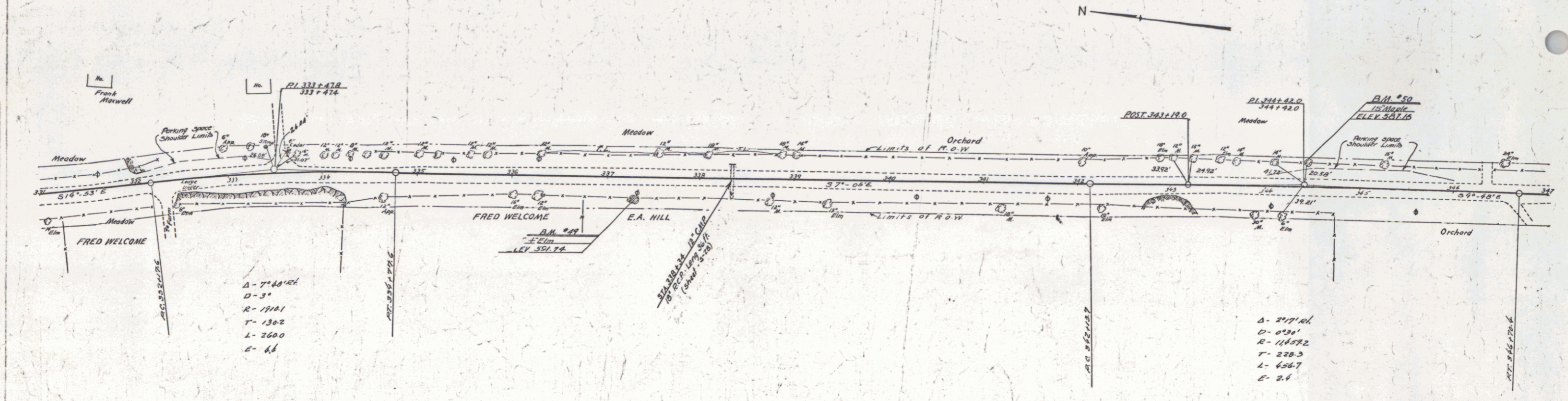
Handwritten notes:
 1-7-18'11
 0-60
 E-14327
 T-916
 L-182.5
 E-3.0

Stamp:
 SHEET 4 OF 36
 01R126

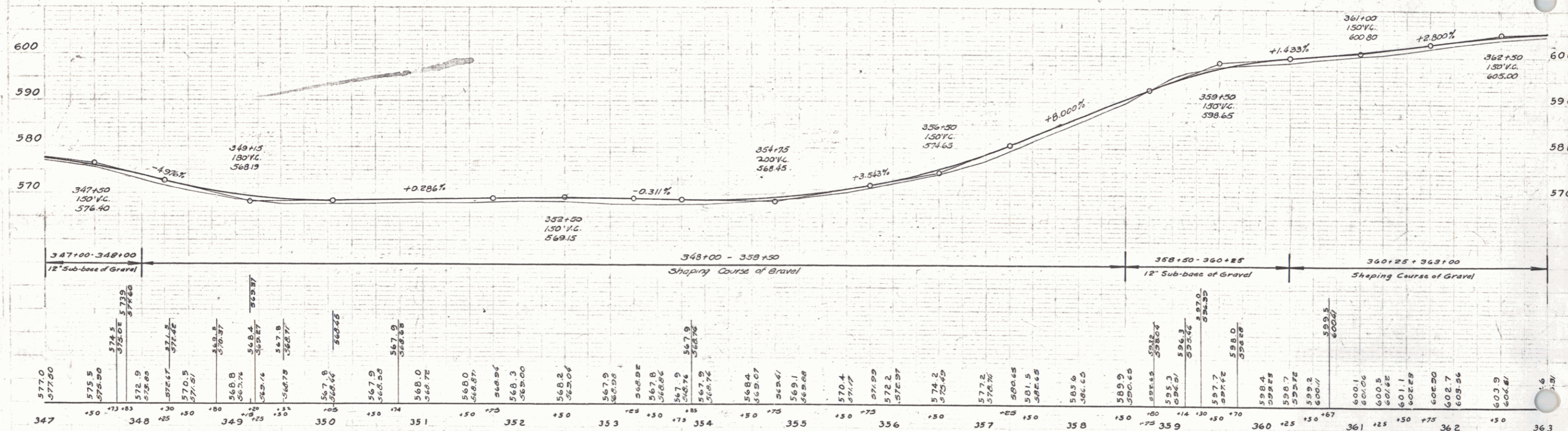
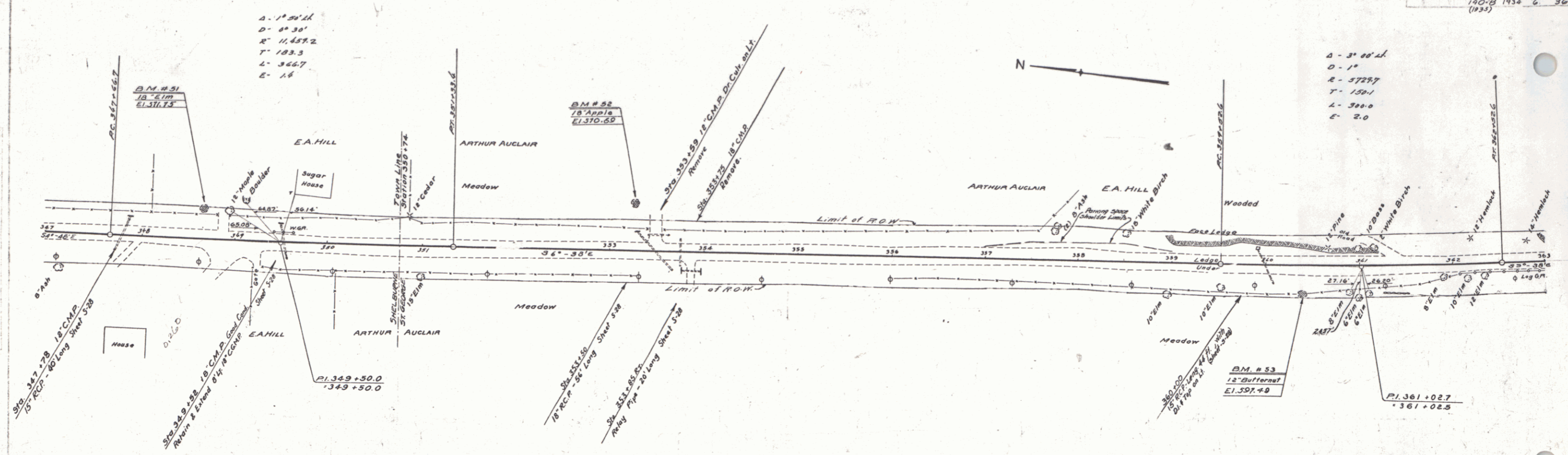


316 150 317 150 318 150 319 150 320 150 321 150 322 150 323 150 324 150 325 150 326 150 327 150 328 150 329 150 330 150 331

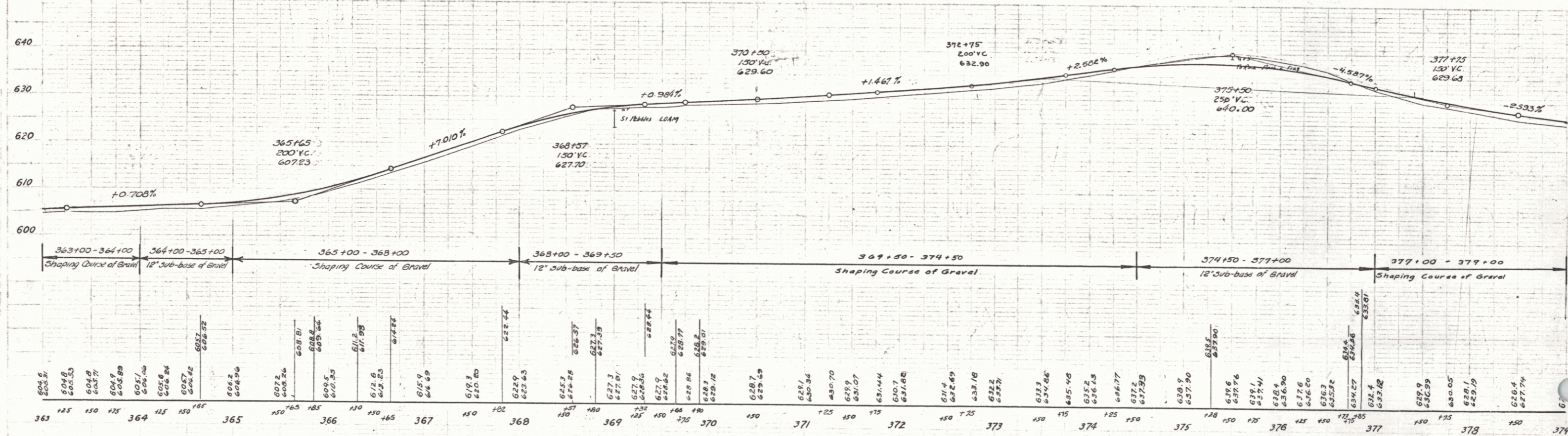
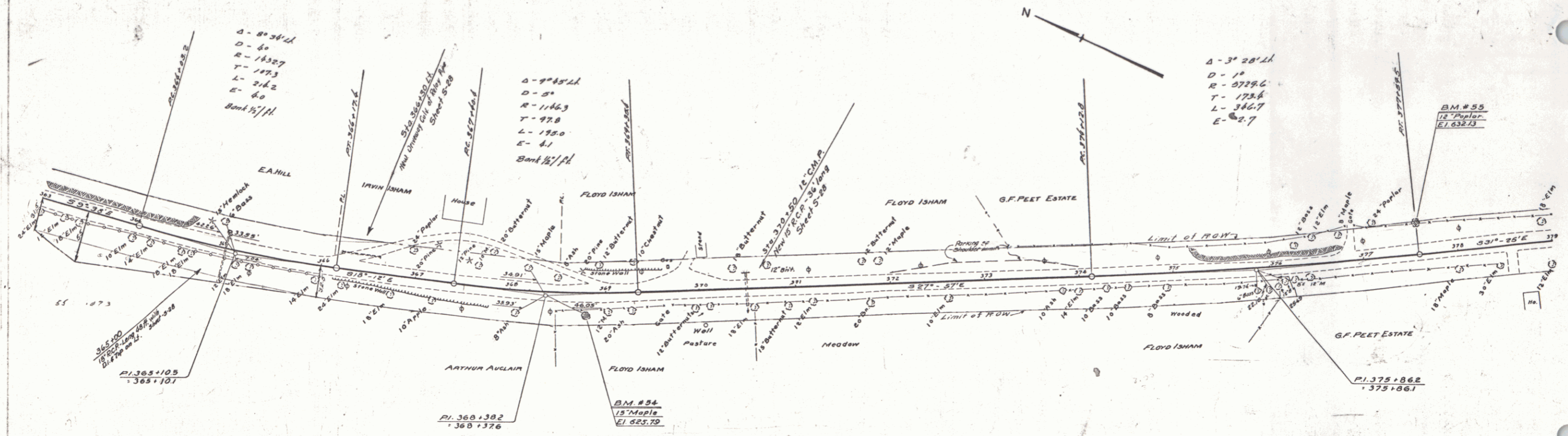
B.M. # 46 spike in root of 18' elm 275ft. N. of sta. 319+59 Elev. 564.61
 B.M. # 47 spike in root of 8' maple 25 ft. N. of sta. 324+10 Elev. 583.10
 B.M. # 48 point spot on ledge 33ft. N. of sta. 329+15 Elev. 601.74



BM. # 40 spike in root of 24' elm 21 Ft. Rt. of Sta. 337-31 Elev. 581.74
 BM. # 50 spike in root of 15' maple 23 Ft. Lt. of Sta. 344-48 Elev. 587.16

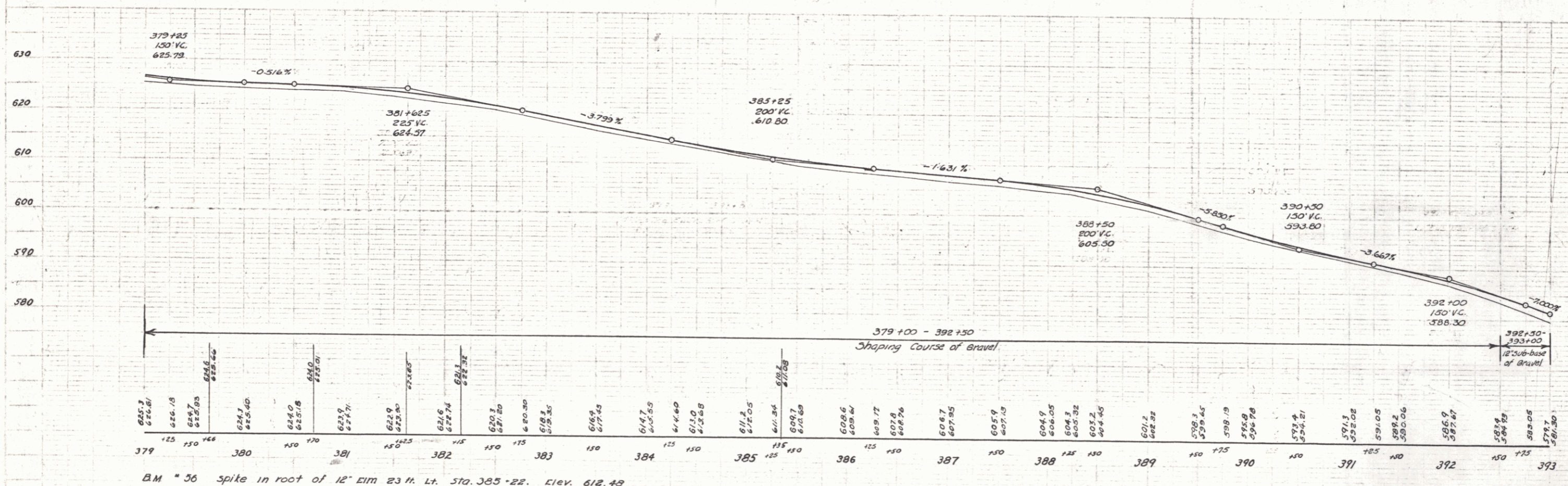
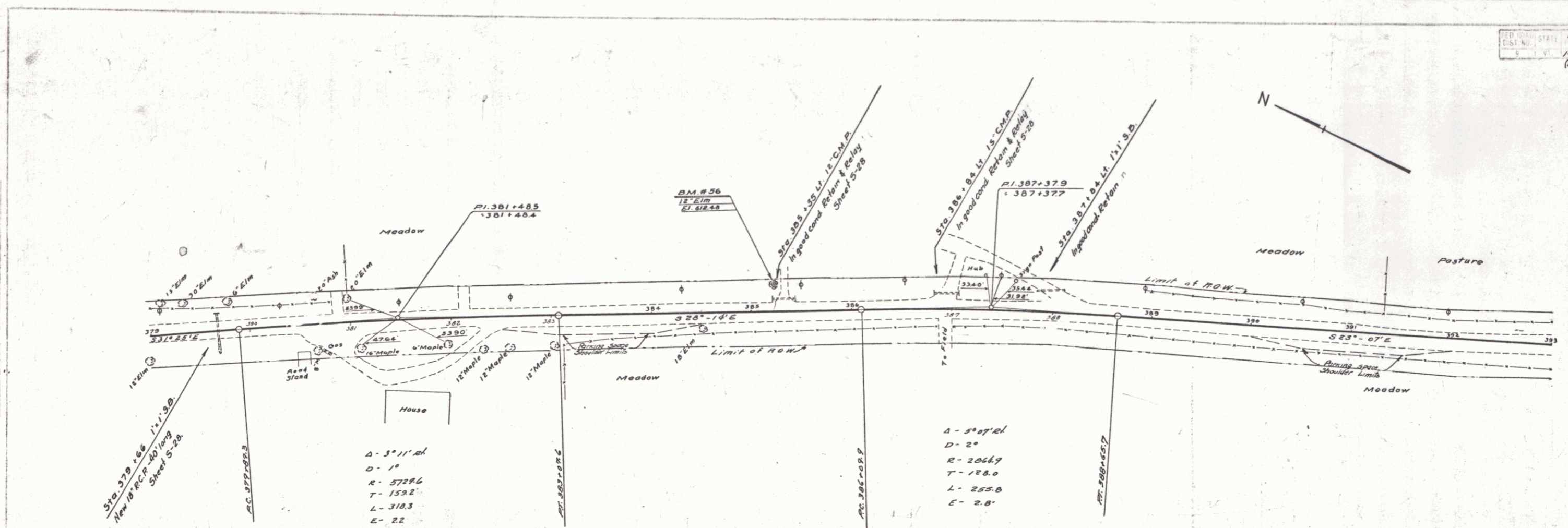


BM. # 51 spike in root of 18" elm 28.5 Ft. Lt. of Sta 348+64 Elev. 511.75
 BM. # 52 spike in root of 18" apple 48 Ft. Lt. of Sta. 353+24 Elev. 510.68
 BM. # 53 spike in trunk of 12" B.N. 21 Ft. Rt. of Sta. 360+38 Elev. 597.49



BM # 54 spike in the root of 15' maple 15 Ft. Rt. of Sta 368+02. Elev. 625.79
 BM # 55 spike in the root of 12' poplar 30 ft. Lt. of Sta 377+55. Elev. 632.13

5

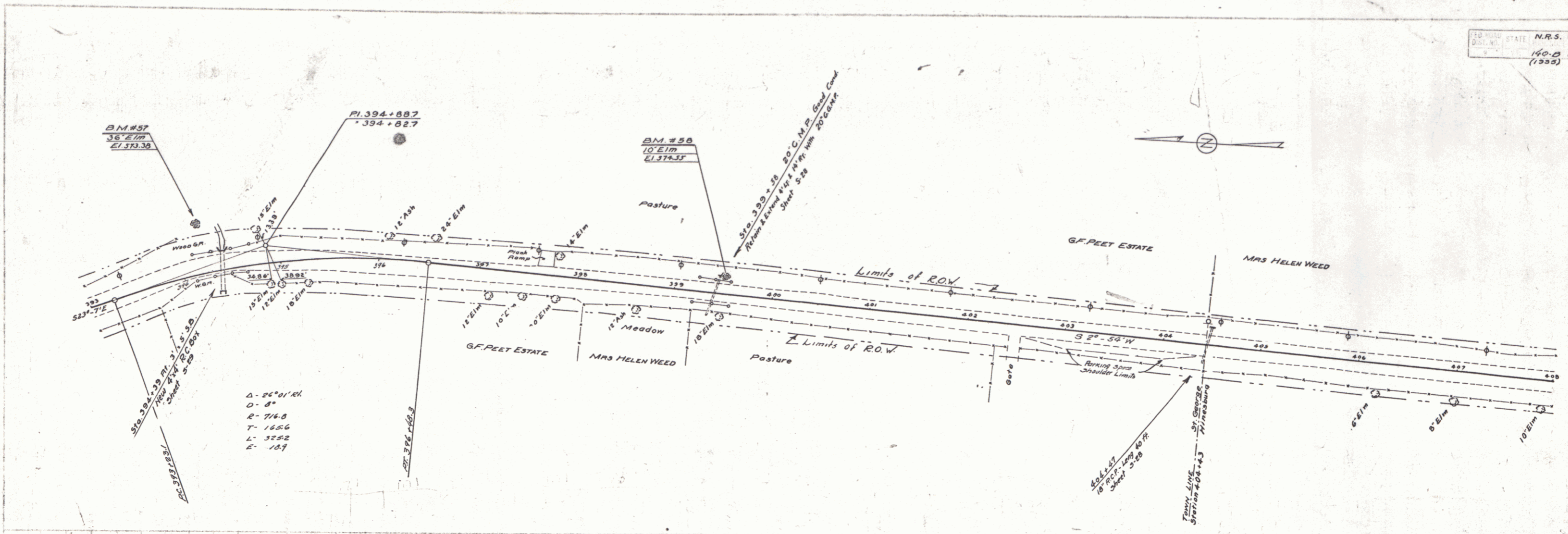


Vertical Curve
Data
Sheet 5-28

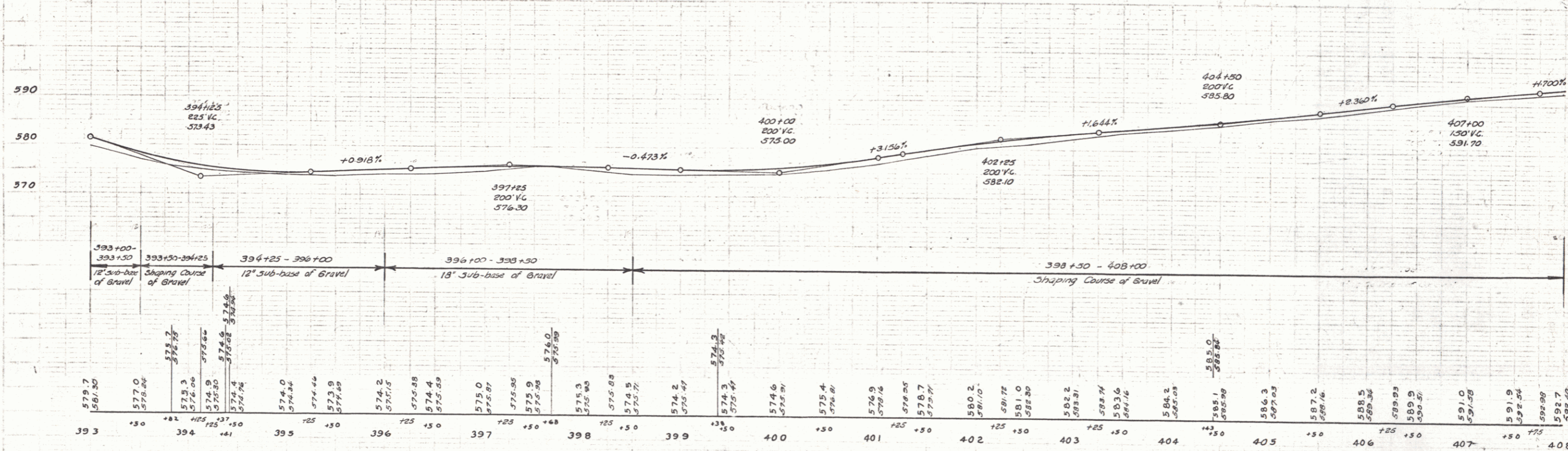
7/1/35

BM # 36 spike in root of 12' Elm 23 ft. Lt. Sta. 385+22. Elev. 612.49

A.D. WOOD
CIVIL ENGINEER
No. 9123

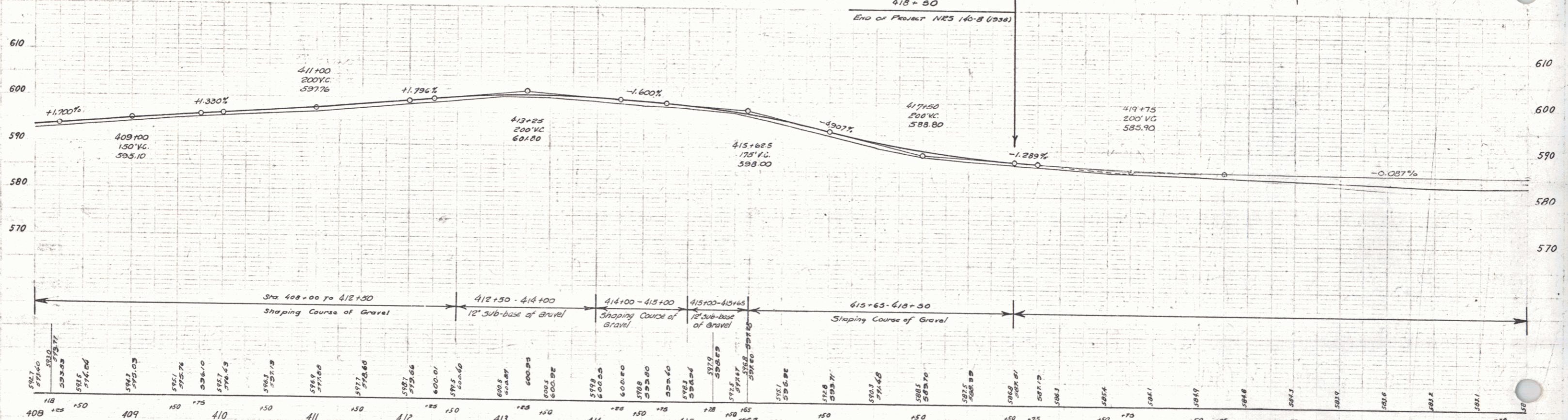
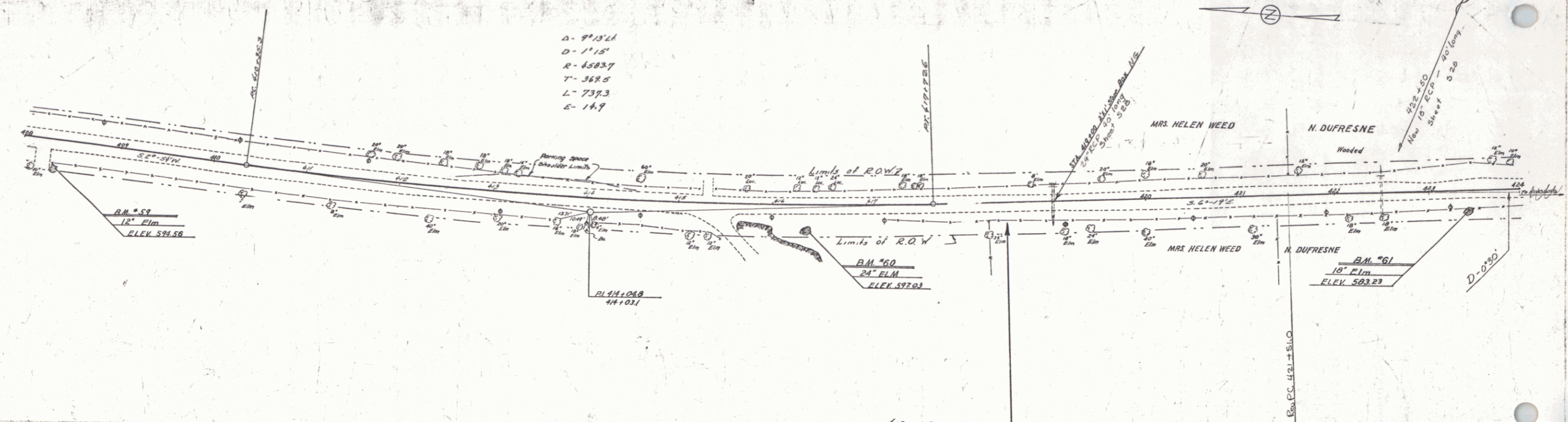


$\Delta = 26^{\circ}01'41''$
 $D = 81'$
 $R = 744.8$
 $T = 162.6$
 $L = 325.2$
 $E = 18.9$



BM. " 57 Spike in the root of 36" elm 49 H. II. of Sta. 394+81 Elev. 573.38
 BM. " 58 Spike in the root of 10" elm 13 H. II. of Sta. 399+46 Elev. 574.55

WOOD
 F. MAYNARD
 2182 LOW
 7/19/38



BM 59 SPIKE IN ROOT OF 12" ELM 25' RT OF STA. 408+28 ELEV. 594.56
 BM 60 SPIKE IN ROOT OF 24" ELM 22' RT OF STA. 416+36 ELEV. 597.03
 BM 61 SPIKE IN ROOT OF 18" ELM 18' RT OF STA. 423+43 ELEV. 583.23