

INDEX OF SHEETS

SHEET NO. 1	TITLE PAGE
2	TYPICAL CROSS-SECTION OF IMPROVEMENT
3	DETAILS OF CONSTRUCTION (Drinking Tables)
3A	TYPICAL CROSS-SECTION OF IMPROVEMENT
3B	DETAILS OF CONSTRUCTION (Drinking Tables)
4-35	PLAN AND PROFILE SHEETS
35	STANDARD STRUCTURE SHEET
40	" " " " "
41	" " " " "
42	" " " " "
43	" " " " "
44	CROSS-SECTIONS

**STATE OF VERMONT
STATE HIGHWAY DEPARTMENT**

**PLAN AND PROFILE OF PROPOSED
STATE HIGHWAY**

FEDERAL AID PROJECT

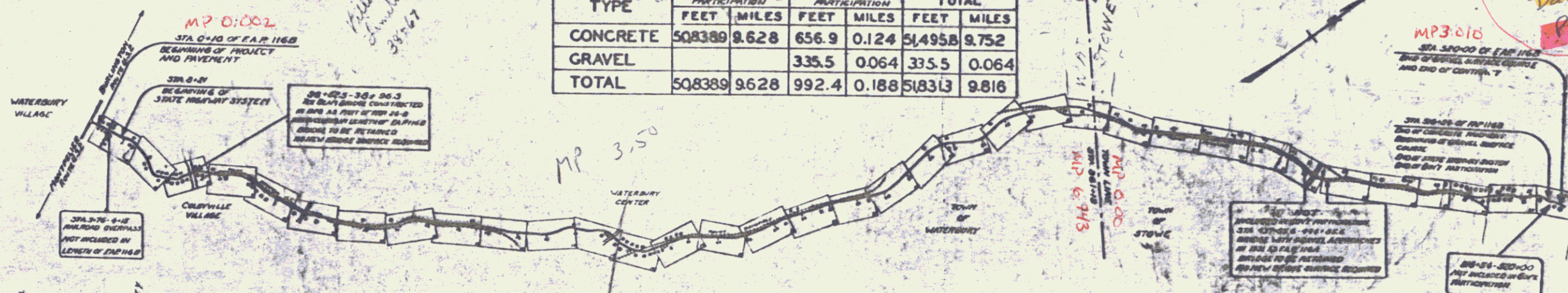
TOWNS OF WATERBURY - STOWE
WATERBURY - MORRISVILLE ROAD.
 FROM 366 FEET SOUTH OF RAILROAD OVER
 PASS IN WATERBURY NORTH 9.816 MILES TO A
 POINT 346 FEET NORTH OF THE END OF THE
 STATE HIGHWAY SYSTEM IN STOWE VILLAGE.

FEET	INCHES	FEET	INCHES	FEET	INCHES
1	0	1	0	1	0



LENGTH OF CONTRACT

TYPE	GOVERNMENT PARTICIPATION		LOCAL GOVERNMENT PARTICIPATION		TOTAL	
	FEET	MILES	FEET	MILES	FEET	MILES
CONCRETE	508389	9.628	656.9	0.124	514958	9.752
GRAVEL			335.5	0.064	335.5	0.064
TOTAL	508389	9.628	992.4	0.188	518313	9.816



- COUNTY LINE
- TOWN LINE
- FENCE LINE
- STONE WALL
- UNFENCED
- GUARD RAIL
- TRAVELED
- RAILROAD
- RETAINING
- CENTER LINE
- SURVEY LINE
- CULVERT
- DROP INLET
- TROLLEY RAIL
- POWER POLE
- TELEPHONE
- TREE
- HEDGE

- CURVE DATA**
- DEFLECTION ANGLE Δ
 - DEGREE OF CURVE D
 - RADIUS OF CURVE R
 - TANGENT DISTANCE T
 - LENGTH OF CURVE L
 - EXTERNAL DISTANCE E
 - POINT OF INTERSECTION P. I.
 - POINT OF CURVE P. C.
 - POINT OF TANGENT P. T.
 - POINT ON TANGENT P.O.T.

SCALES
 TITLE PAGE 1" = 2000'
 LAYOUT Plan 1" = 50'
 Profile 1" = 10'
 SECTIONS 1" = 50'

RIGHT-OF-WAY DIVISION
 TOWN FILE
 PERPETUAL
 Town of _____
 (To Be Returned To R.O.W. Division)

CORRECT APRIL 16, 1932
 ENGINEER
 SERIES F. NO. 1558 FILED
 SHEET 1 OF 122 10

Route: VT 100
 Date: 4/15/1932
 Pin: 01R125

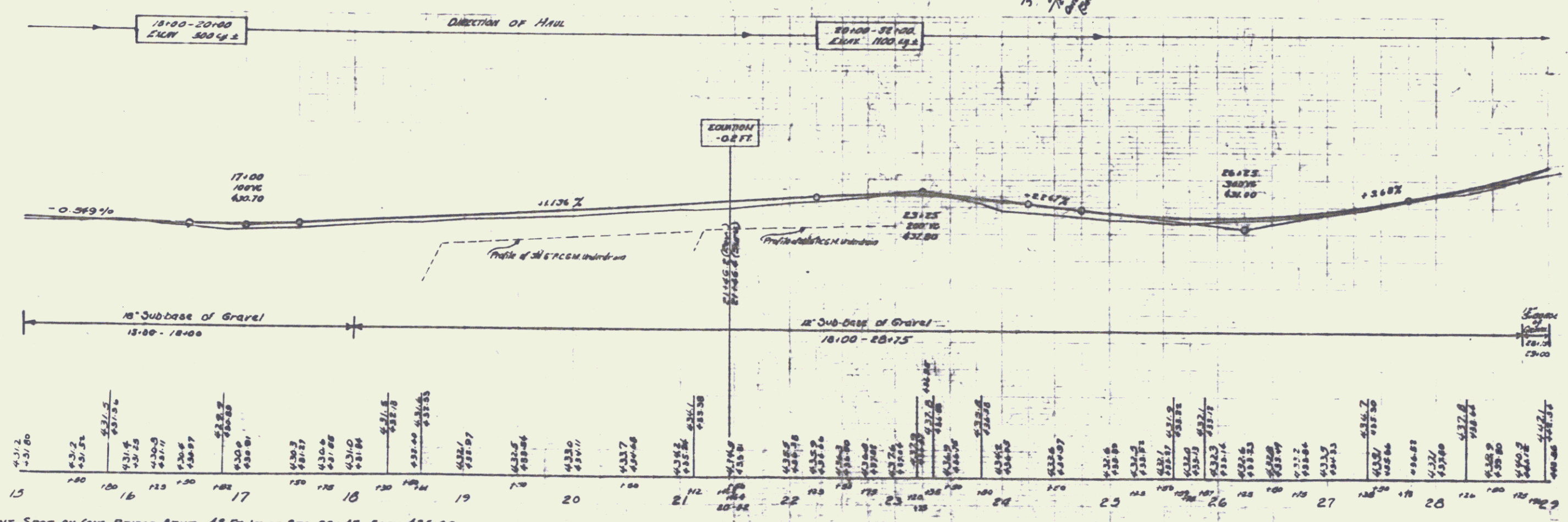
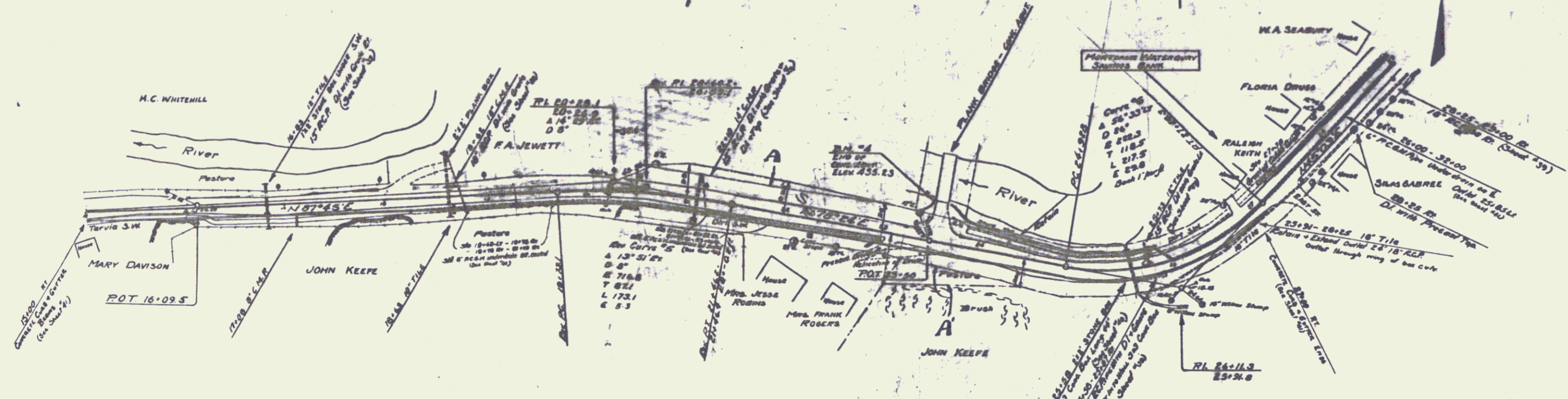
These plans are subject to such
 conditions as may be required by the
 Commissioner of Highway or the
 County of Public Use

Waterbury

POOR ORIGINAL COPY

Parcel	Kind of Data of Instrument	Date of	Grantee	Recorder	Remarks
A	G.C.D.	4-19-22	E. A. Jewett	J. H. ...	
A	G.C.D.	2-17-26	John H. Keeffe	J. H. ...	

FED. ROAD STATE FED. AID FISCAL SHEET NO. DATE
 DIST. NO. PROJ. NO. YEAR NO. SHEET

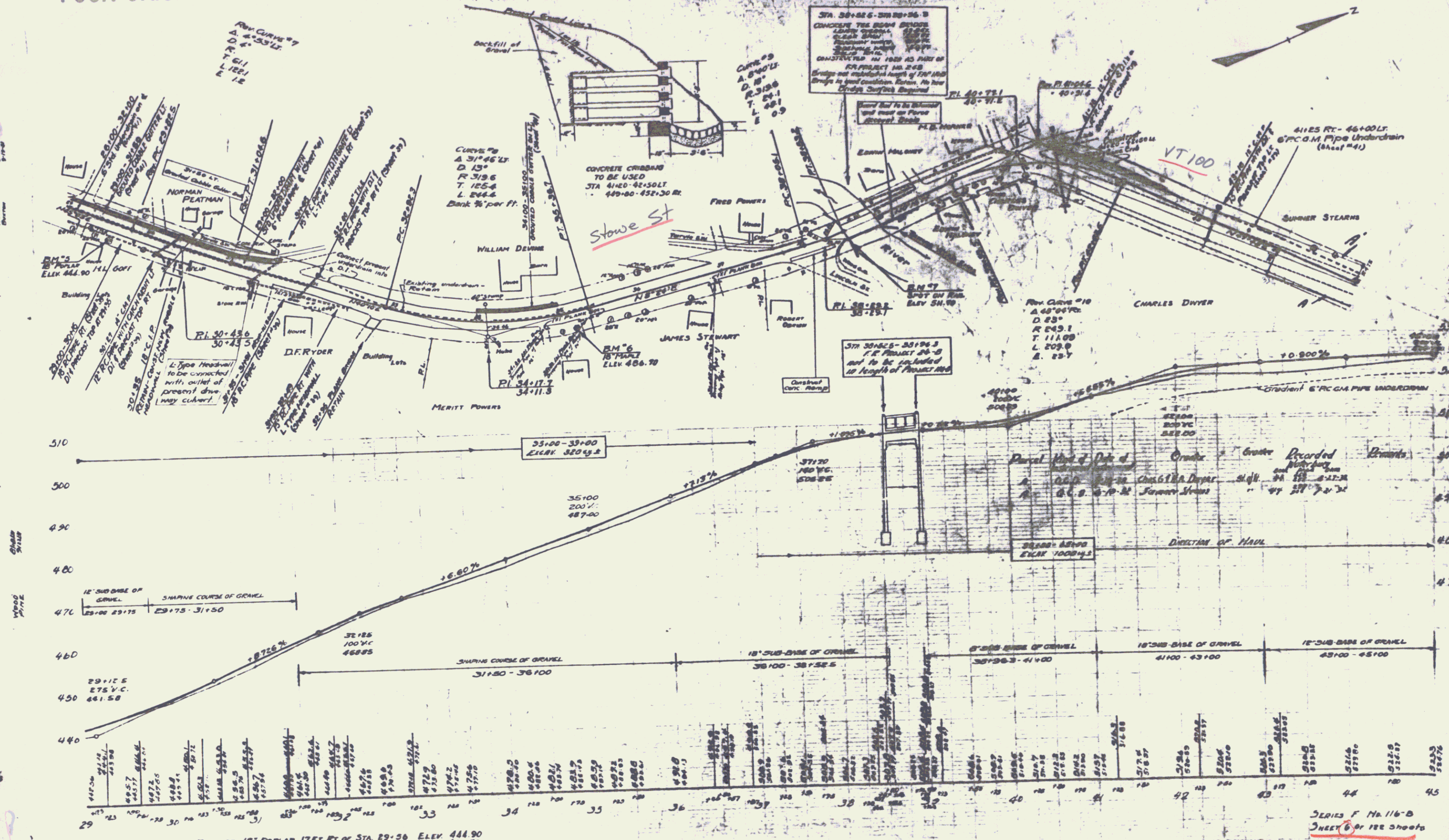


B.M. No. 4 PAINT SPOT ON CONC. BRIDGE ABUT. 43 FT. LT. OF STA. 23+47 ELEV. 435.23

SERIES F No. 16-B
 SHEET 3 OF 12 SHEETS

POOR ORIGINAL COPY

FED. ROAD STATE PROJ. DIST. NO. 116-B SHEET 6 OF 122 SHEETS

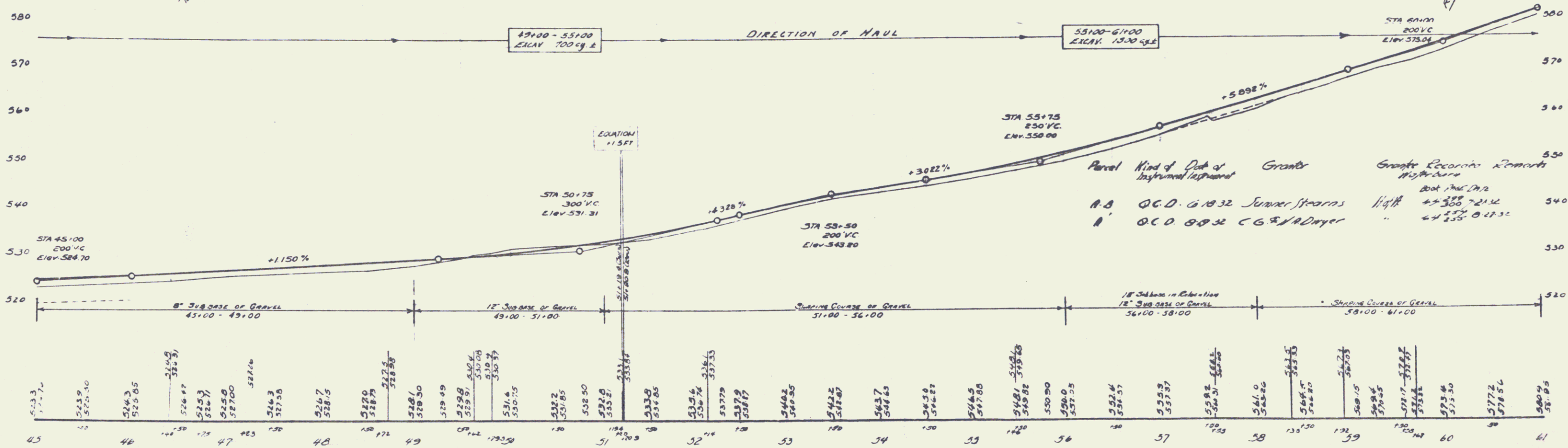
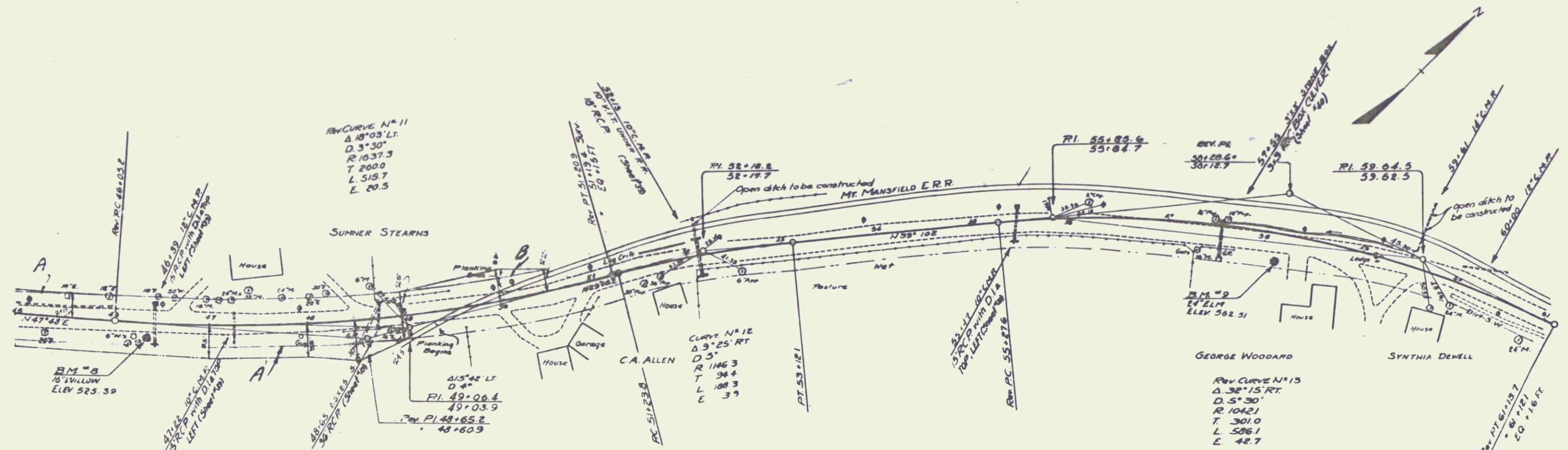


BM No 5 SPIKE IN ROOT OF 18" POPLAR 17 FT. RT. OF STA. 29+36 ELEV. 444.90
 BM No 6 SPIKE IN ROOT OF 18" MAPLE 17 FT. RT. OF STA. 35+18 ELEV. 486.70
 BM No 7 PRINT SPOT ON CONC BRIDGE RAIL 9.7 FT. RT. OF STA. 38+55 ELEV. 511.70

SERIES F No. 116-B SHEET 6 OF 122 SHEETS

POOR ORIGINAL COPY

FILE NO. 116-B 1932 7 122



B.M. No. 8 SPIKE IN ROOT OF 16" WILLOW 14' RT. OF STA. 46+30 ELEV. 525.39
 B.M. No. 9 SPIKE IN ROOT OF 24" ELM 15' RT. OF STA. 38+12 ELEV. 562.51

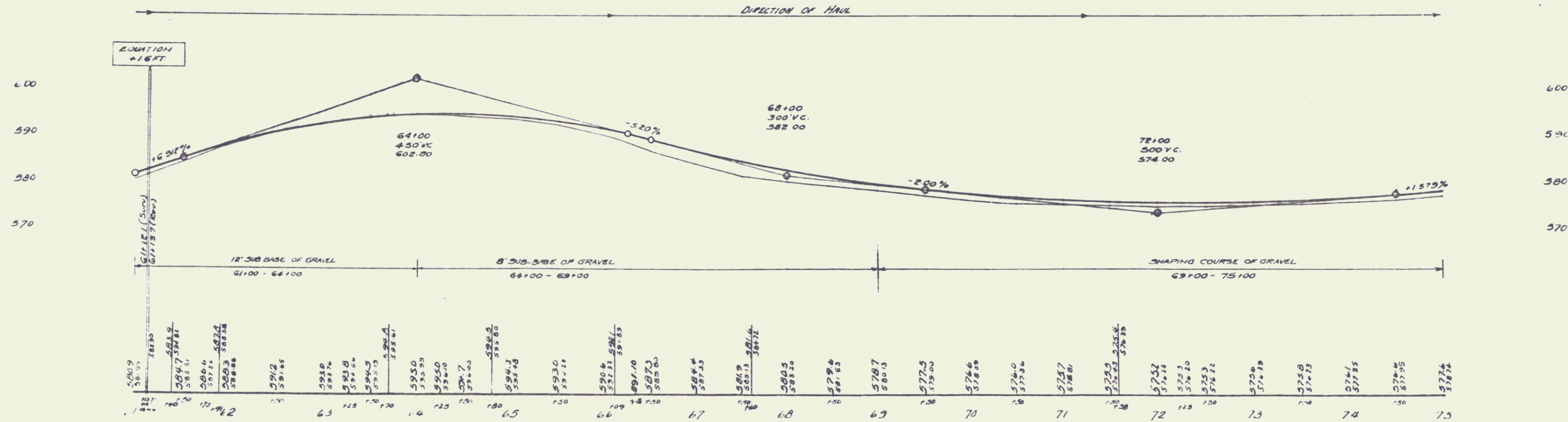
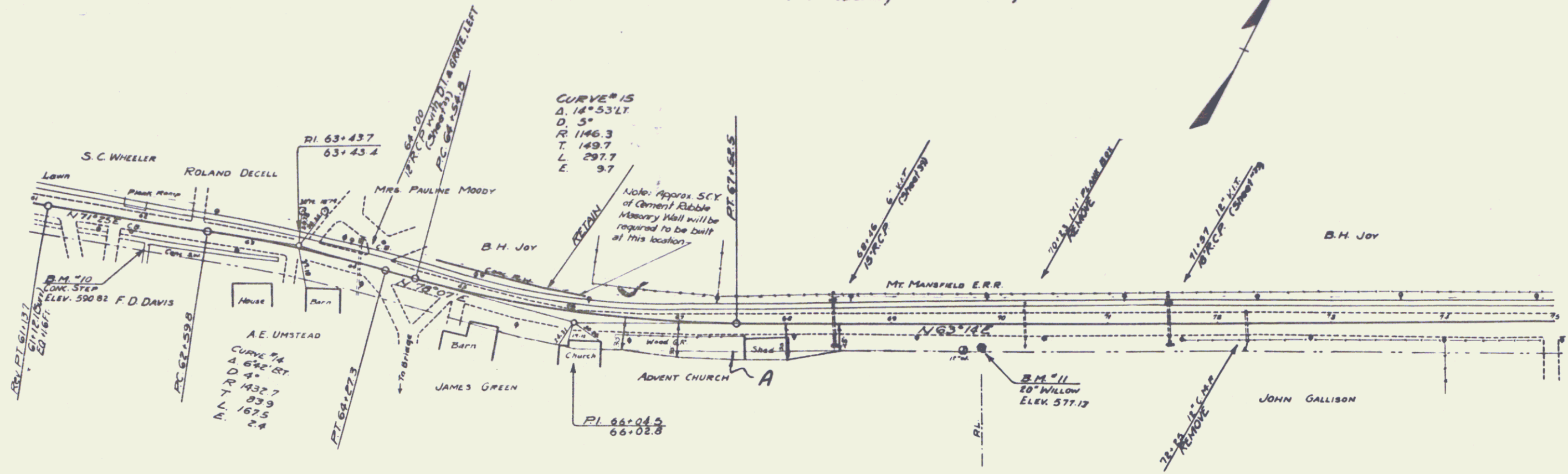
Parcel Map of Data of Grantor
 A-B O.C.D. 6/10/32 Sumner Stearns
 A' O.C.D. 8/8/32 C.G.S./R. Dwyer

SERIES F No. 116-B
 SHEET 7 OF 122 SHEETS

POOR ORIGINAL COPY

1148122-0 122

Percent Kind of Date of Greater Grade Recorded Remarks
 Instrument Instruction
 A Q.C.D. 72732 34. Blodgett
 18. Green 18. Powers & Frasier of Advent Church 8. of 11 44 325
 18. 326 0+32

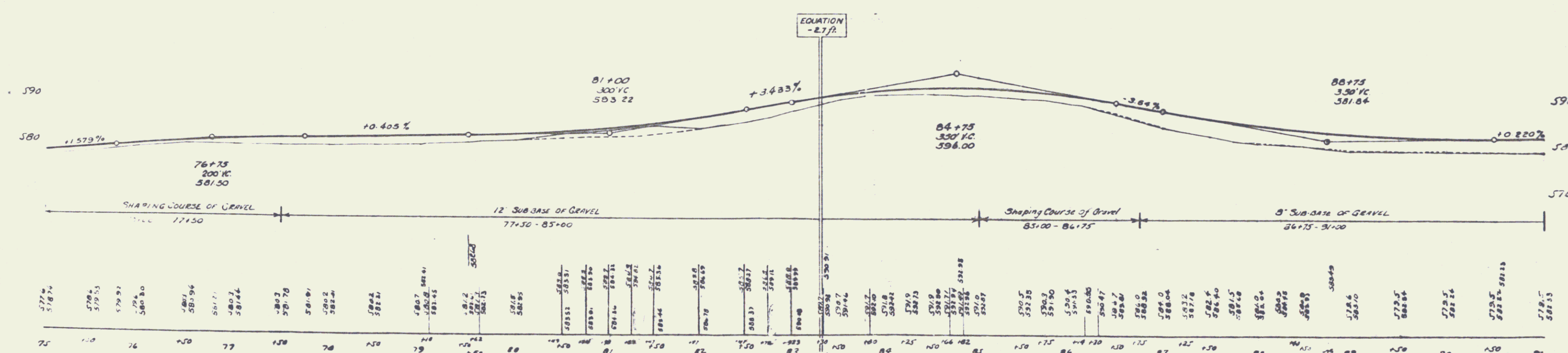
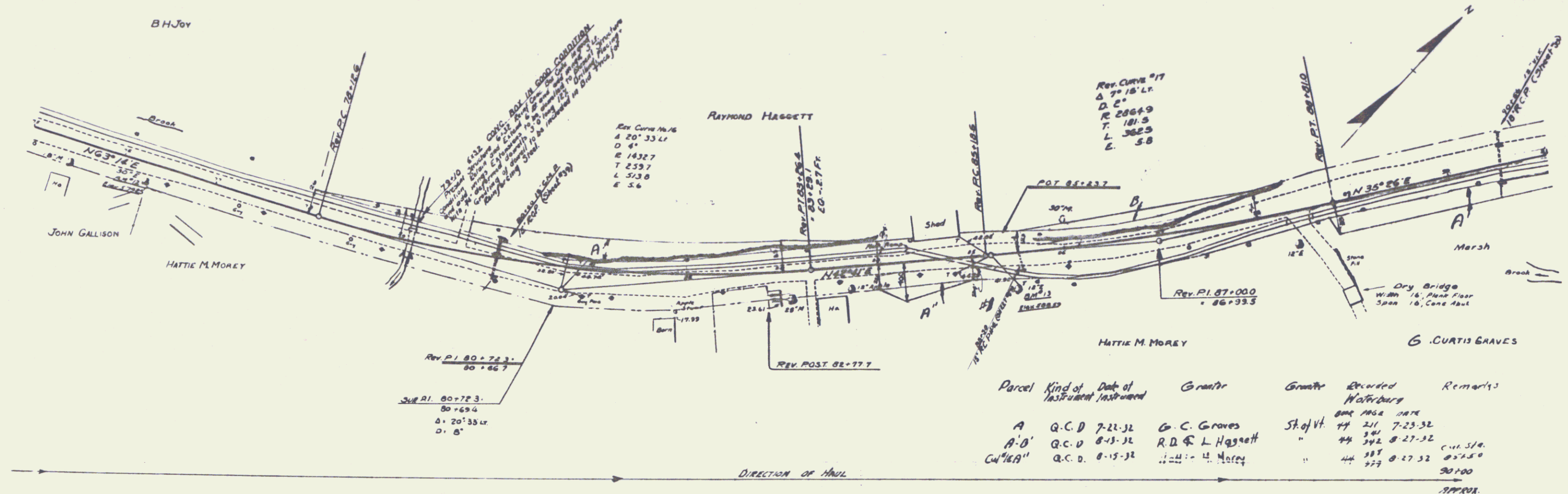


B.M. No. 10 PAINT SPOT ON CONC. STEP 18' RT. OF STA. 62+10 ELEV. 590.82
 B.M. No. 11 SPIKE IN ROOT OF 20" WILLOW 18' RT. OF STA. 69+81 ELEV. 577.17

SERIES F No. 116-B
 SHEET 9 OF 122 SHEETS

POOR ORIGINAL COPY

116-B 192 2 123

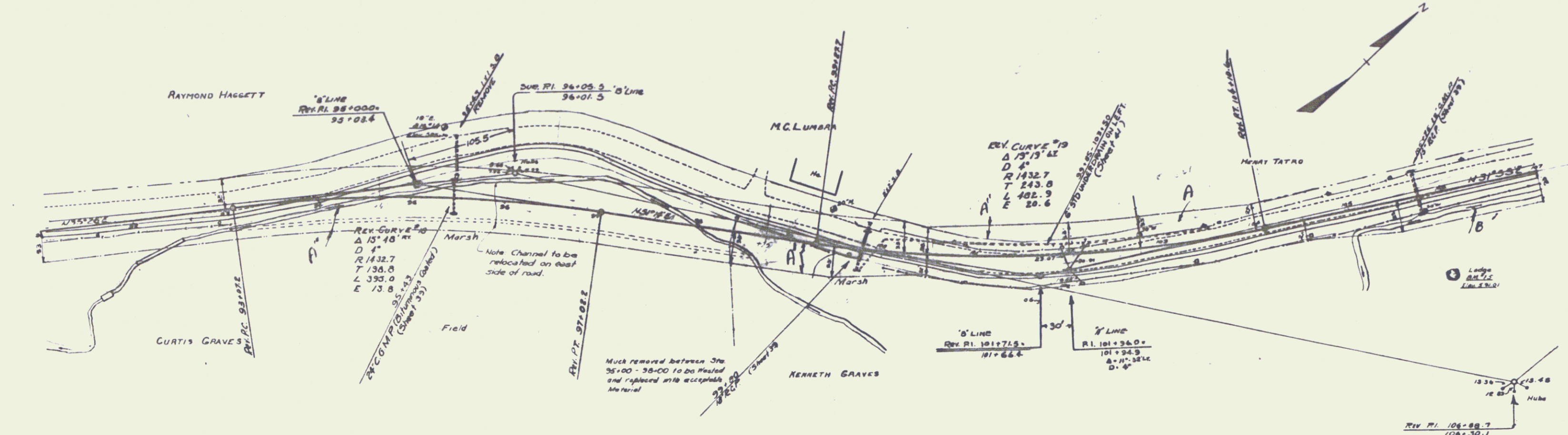


B.M. No. 12 SPIKE IN FOOT OF 30" ELM 15.5' RT. OF STA. 76+28 ELEK 579.28
 B.M. No. 13 SPIKE IN FOOT OF 12" ELM 33' RT. OF STA. 85+80 ELEK 588.59

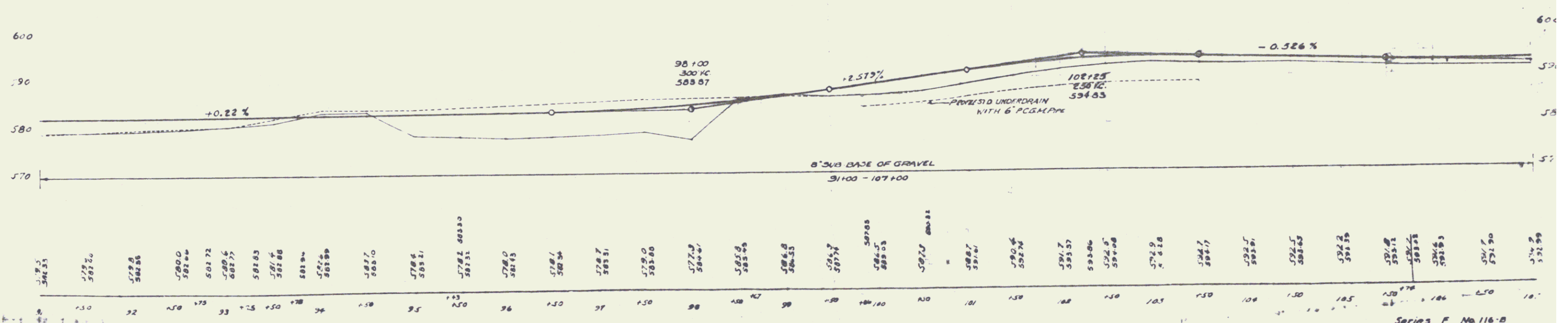
Series F No. 116-B
 Sheet 9 of 22 sheets

POOR ORIGINAL COPY

1/2-B 722 10 122



Parcel	Kind of	Date of	Grant	Grantee	Recorded
	of	Instrument			Book Page
A, B, C, D, E	Q.C.D.	8-19-32	Henry & O. Tatro	Stajff	44 250 8-17-32
A, B	Q.C.D.	7-23-32	K.W. & P. Graves	"	47 214 7-23-32
A, B	Q.C.D.	7-7-32	J. Stearns & A.C. Lumbra	"	44 347 7-21-32
A, B	Q.C.D.	7-7-32	G. C. Graves	"	44 251 7-23-32



54+30 ELEV. 585.36
 55+30 ELEV. 591.01
 PAINT SPOT ON LINE

Series F No 116-B
 Sheet 10 of 12 sheets

PLAN
 DATE: 11/1/51
 DRAWN BY: J. W. MOORE
 CHECKED BY: J. W. MOORE
 TITLE: ROADWAY IMPROVEMENT
 SHEET NO. 122 OF 122

PROFILE
 DATE: 11/1/51
 DRAWN BY: J. W. MOORE
 CHECKED BY: J. W. MOORE
 TITLE: ROADWAY IMPROVEMENT
 SHEET NO. 122 OF 122

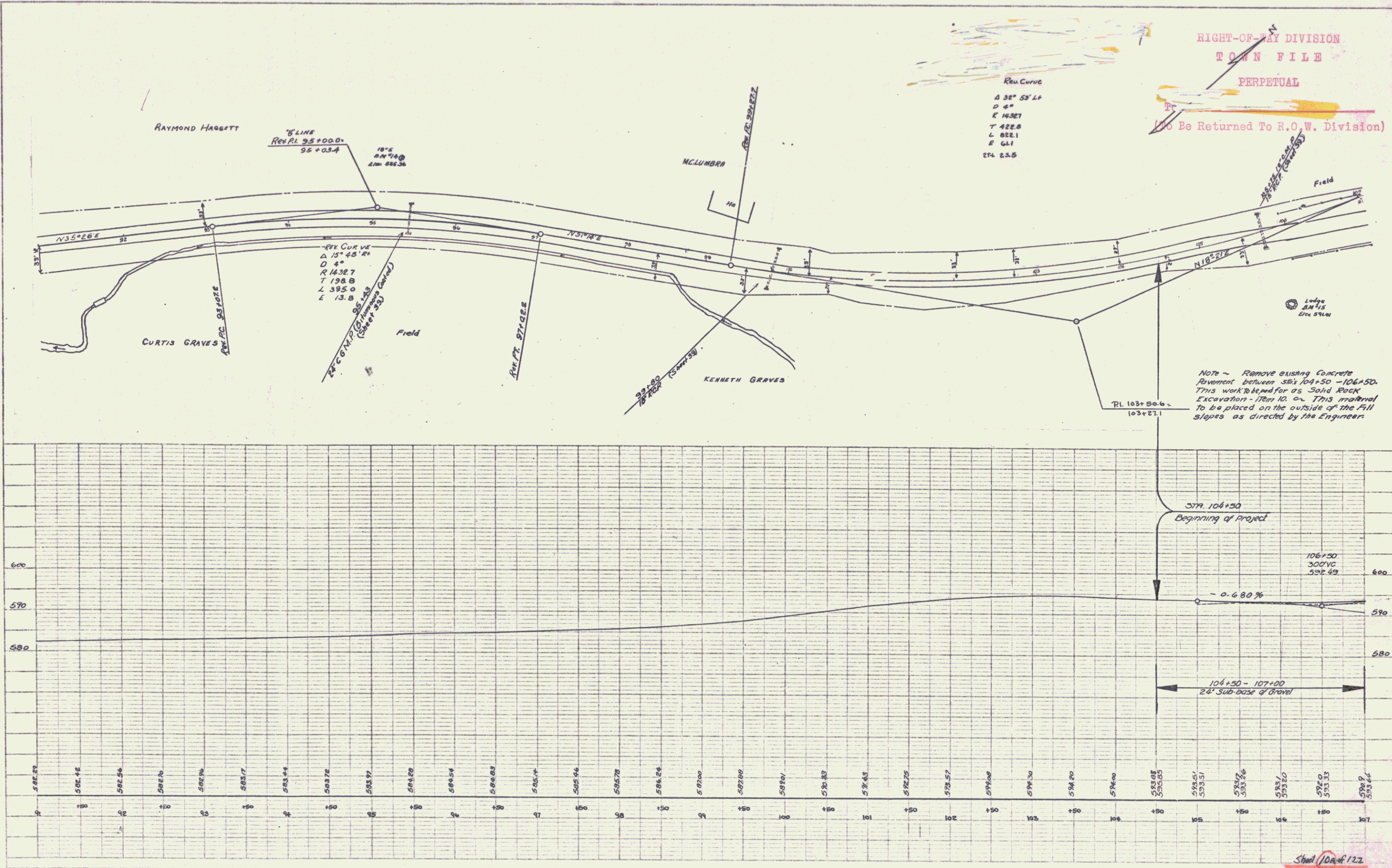
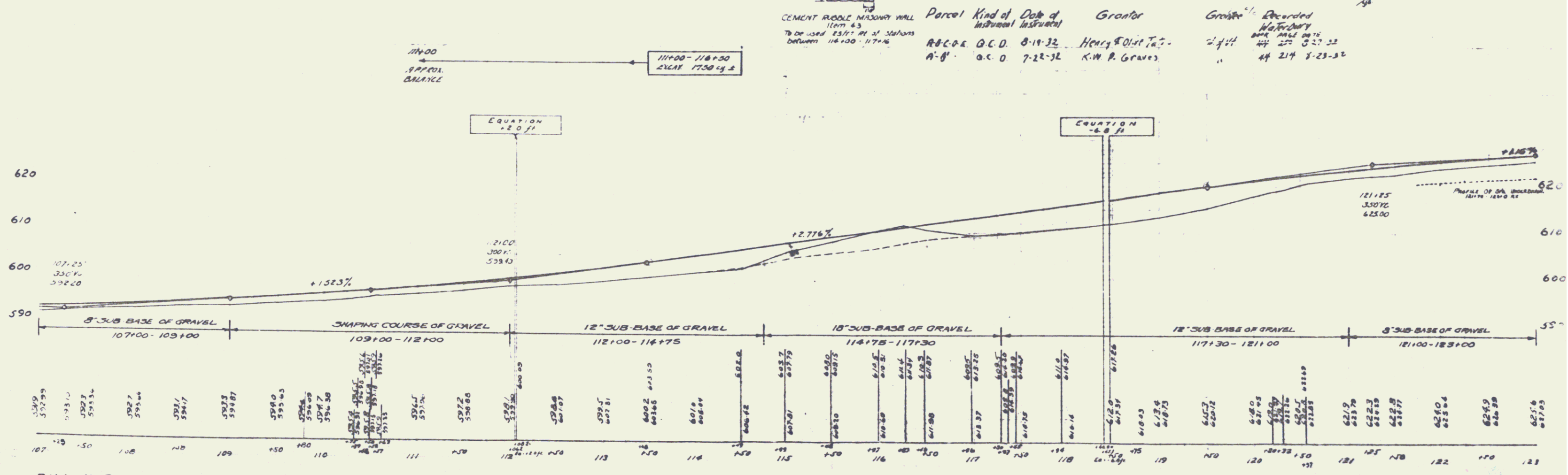
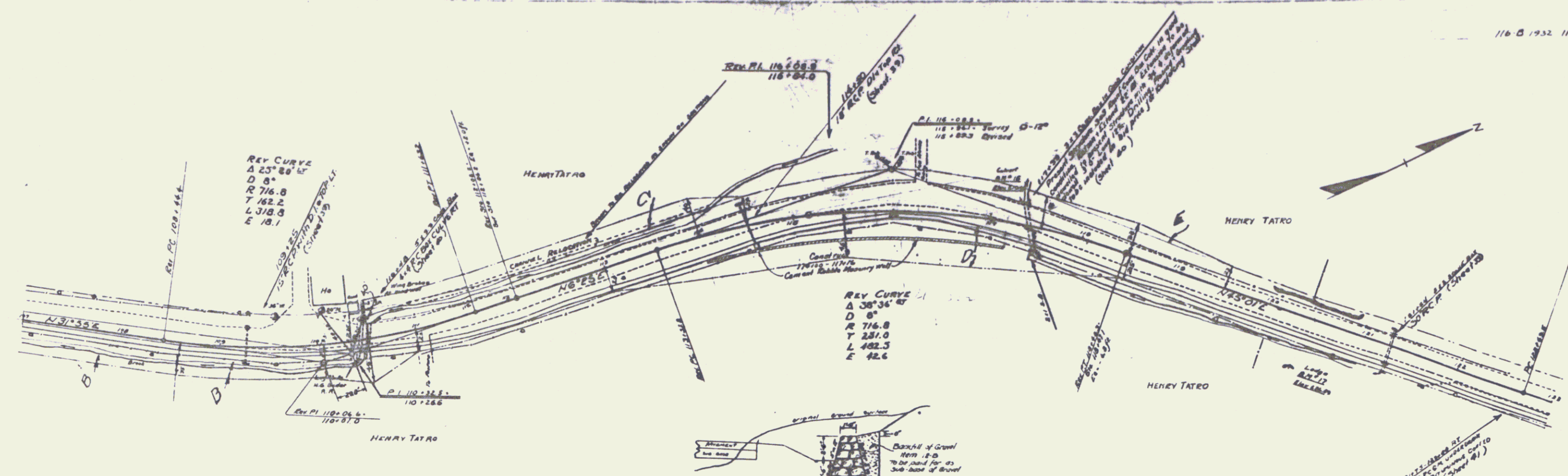


PLATE 1 - PLAN AND PROFILE
 SHEET NO. 122 OF 122

Sheet 102 of 122



B.M. No. 16 PAINT SPOT ON CONC. CURB HEADWALL 10' LT. OF STA. 117+30 ELEV. 610.44
 B.M. No. 17 PAINT SPOT ON LEDGE 54' RT. OF STA. 121+30 ELEV. 626.69

PLAN	DESIGNED	DATE
	PLOTTED	
	CHECKED	
	BY	
	DATE	
	BY	
	DATE	

PROFILE	DESIGNED	DATE
	PLOTTED	
	CHECKED	
	BY	
	DATE	
	BY	
	DATE	

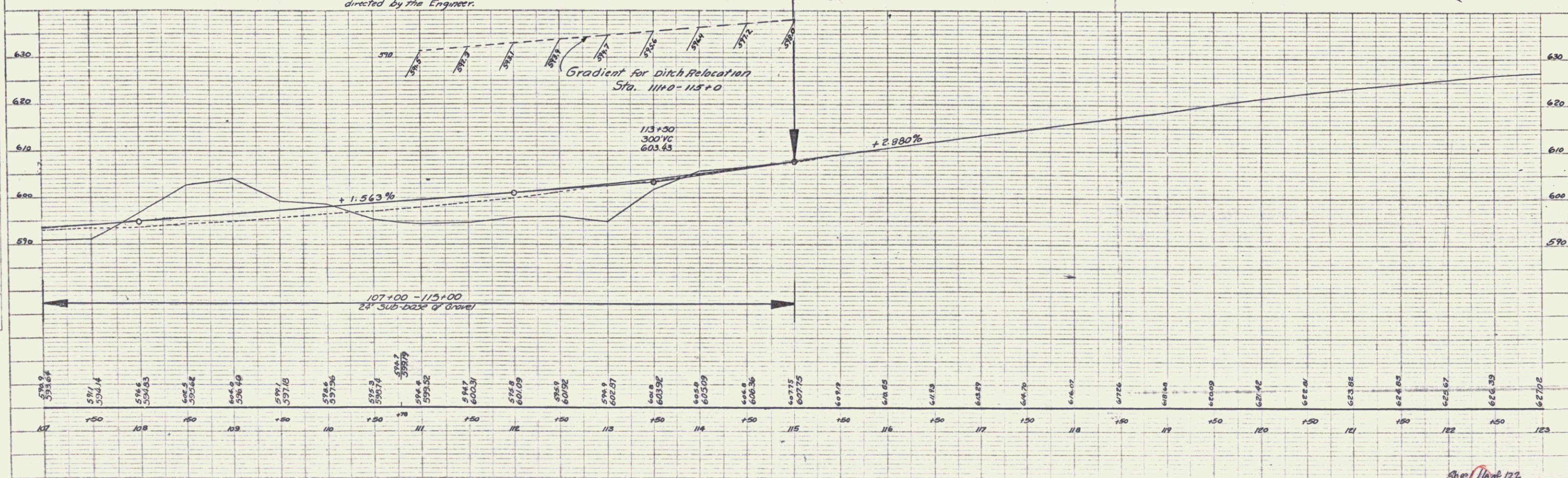
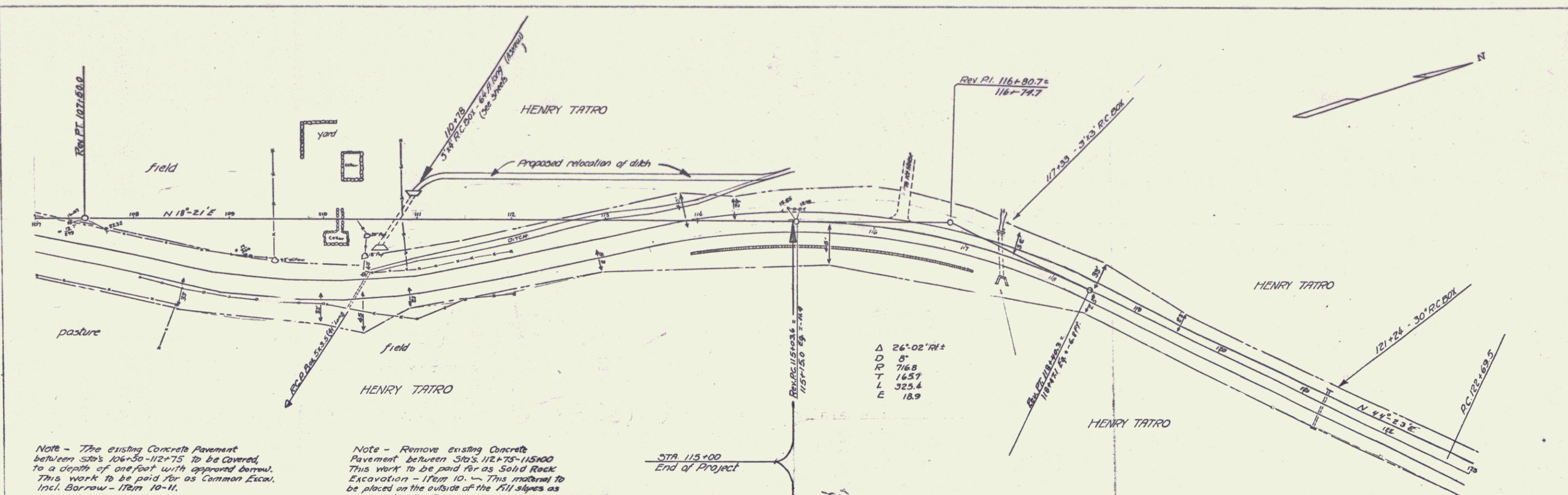
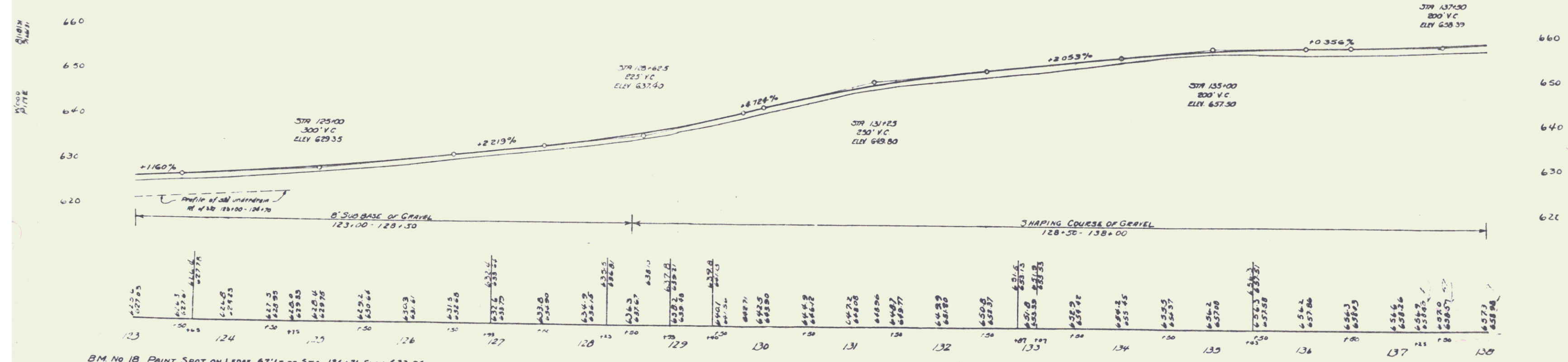
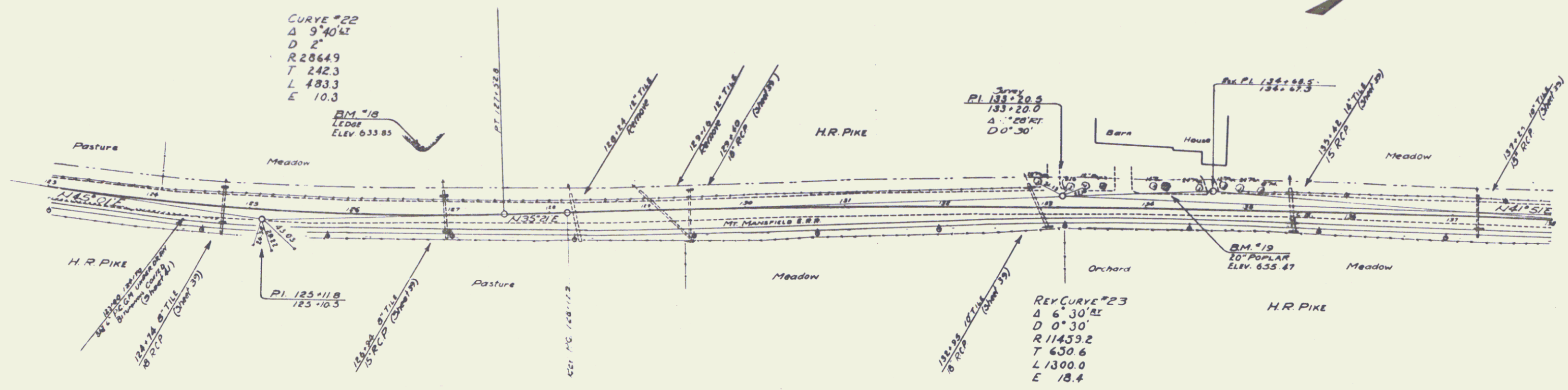


PLATE 1 - ROAD PROFILE OF H.A. & E. TRIMBARD
 OFFICE - 400 W. 4TH ST. NEW YORK
 S.E. 101-248-1

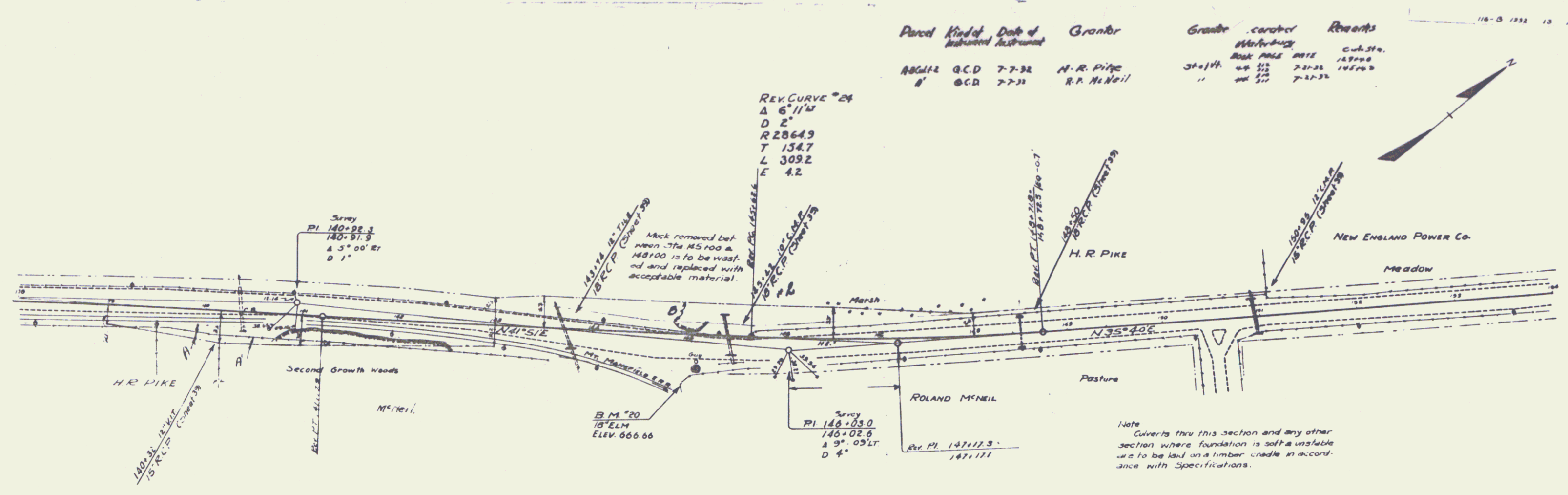
Sheet 11 of 122
 DATE: 1/16/12



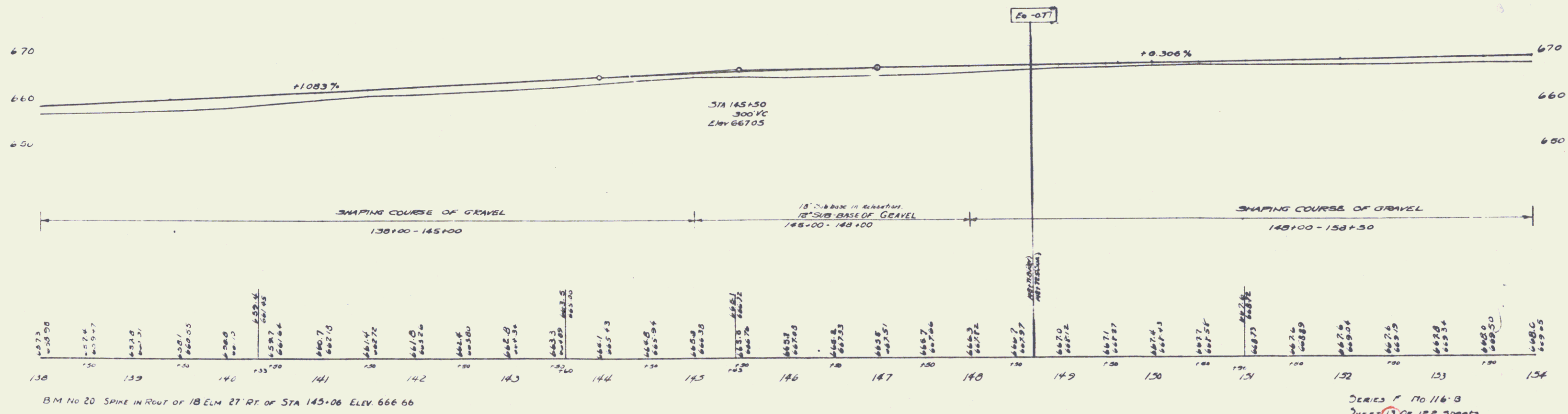
BM No 18 PAINT SPOT ON LEDGE 67' LT. OF STA. 126+71 ELEV. 633.85
 BM No 19 SPIKE IN ROOT OF 80' POPLAR 15' LT. OF STA. 134+20 ELEV. 655.47

Parcel	Kind of Instrument	Date of	Grantor	Grantor	Contract	Remarks
18042	Q.C.D.	7-7-32	H. R. Pike		18042	
18043	Q.C.D.	7-7-32	R. P. McNeil		18043	

REV. CURVE #24
 Δ 6° 11' 14"
 D 2'
 R 2864.9
 T 134.7
 L 309.2
 E 4.2



Note
 Culverts thru this section and any other section where foundation is soft or unstable are to be laid on a timber cradle in accordance with Specifications.



BM NO 20 SPIKE IN ROUT OF 18 ELM 27 FT. OF STA 145+06 ELEV 666.66

SERIES F No 116-B
 SHEET 13 OF 122 SHEETS

Parcel Kind of Date of Greater
Instrument Instrumented

A-B G.C.D. 6-17-32 C.C. Moody
A' G.C.D. 7-22-32 E.C. Dow

Grade Recorded
Waterbury

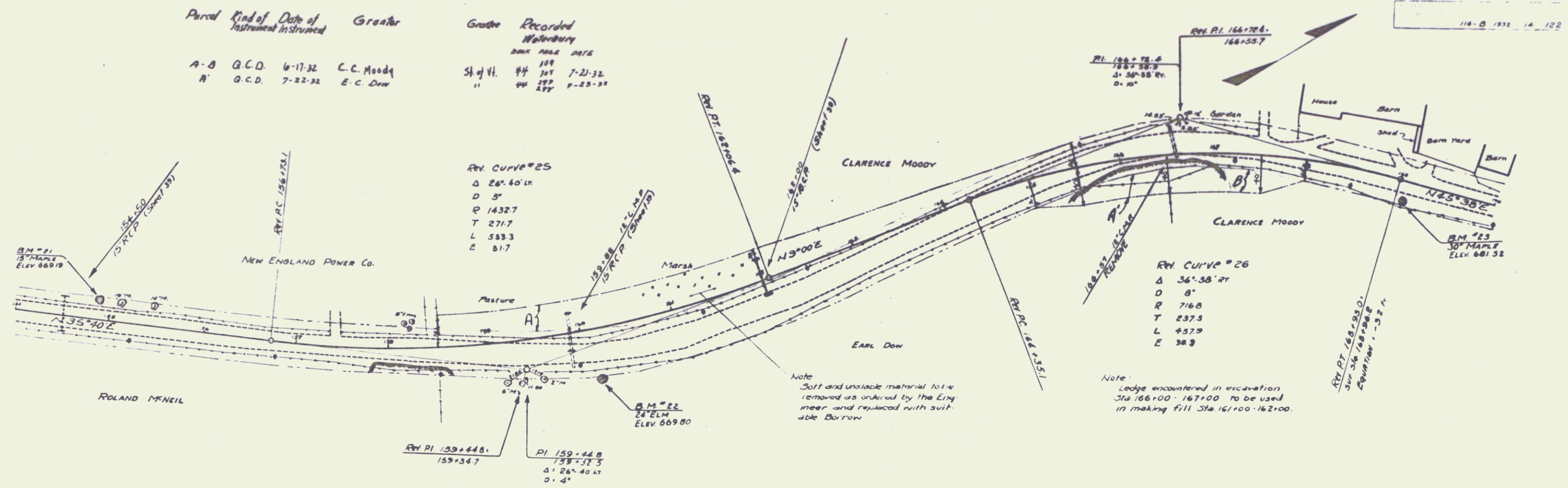
Sta of H. 44 109 7-21-32
" 44 297 9-23-31

REV. CURVE #25

Δ 26°.40' LN
D 5'
R 1432.7
T 271.7
L 583.3
E 81.7

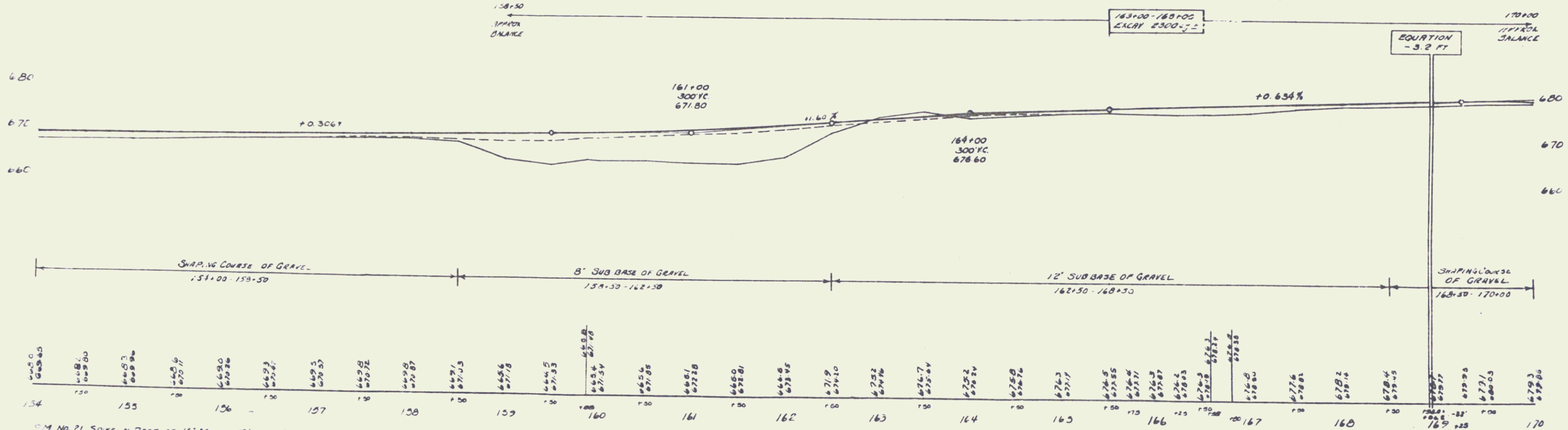
REV. CURVE #26

Δ 36°.38' RT
D 8'
R 716.8
T 237.3
L 437.9
E 38.9



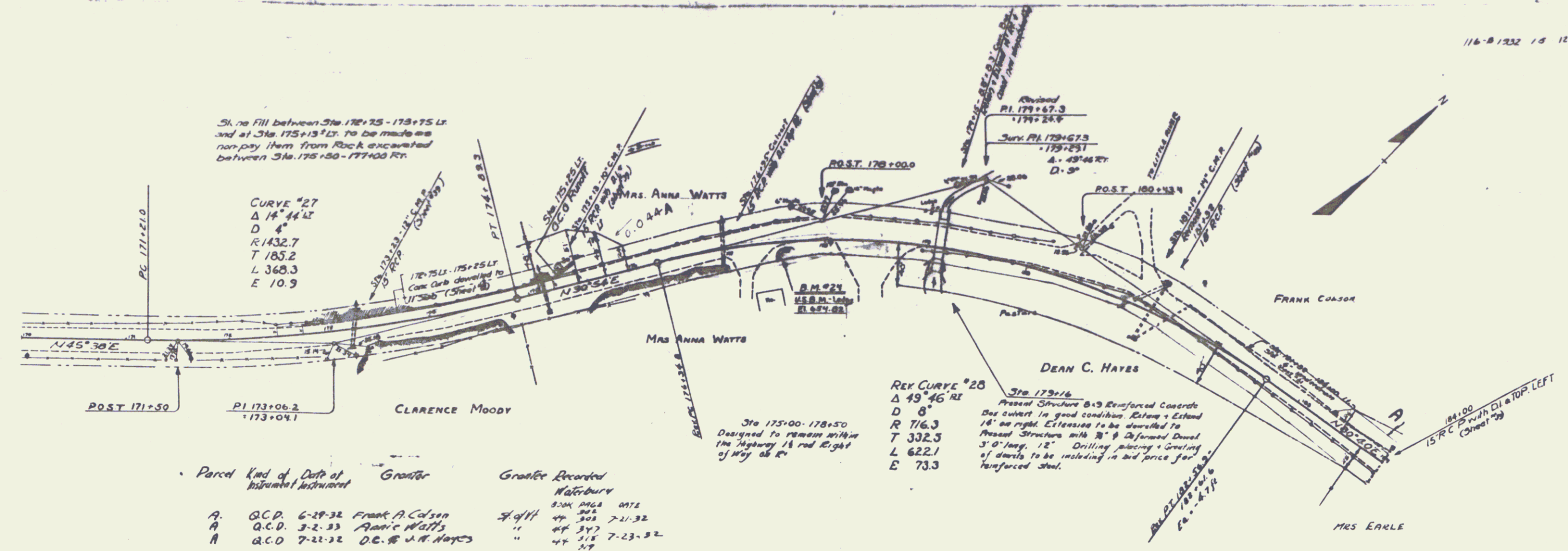
Note
Soft and unstable material to be removed as ordered by the City engineer and replaced with suitable borrow

Note
Ledge encountered in excavation Sta. 166+00-167+00 to be used in making fill Sta. 161+00-162+00.



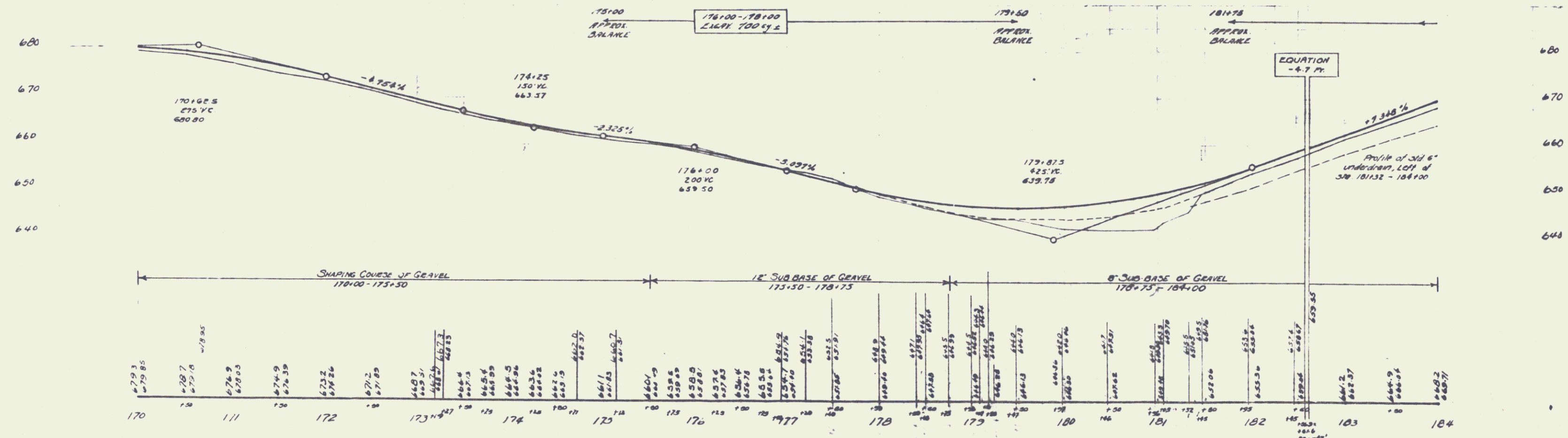
BM NO 21 SPIKE IN ROOT OF 15' MAPLE 19' LT OF STA. 154+88 ELEV. 669.19
BM NO 22 SPIKE IN ROOT OF 24' ELM 30' RT OF STA. 160+14 ELEV. 669.80
BM NO 23 SPIKE IN ROOT OF 30' MAPLE 19' RT OF STA. 169+04 ELEV. 681.52

SERIES F No 116 B
SHEET 14 OF 122 SHEETS 14



Parcel Kind of Date of Instrument

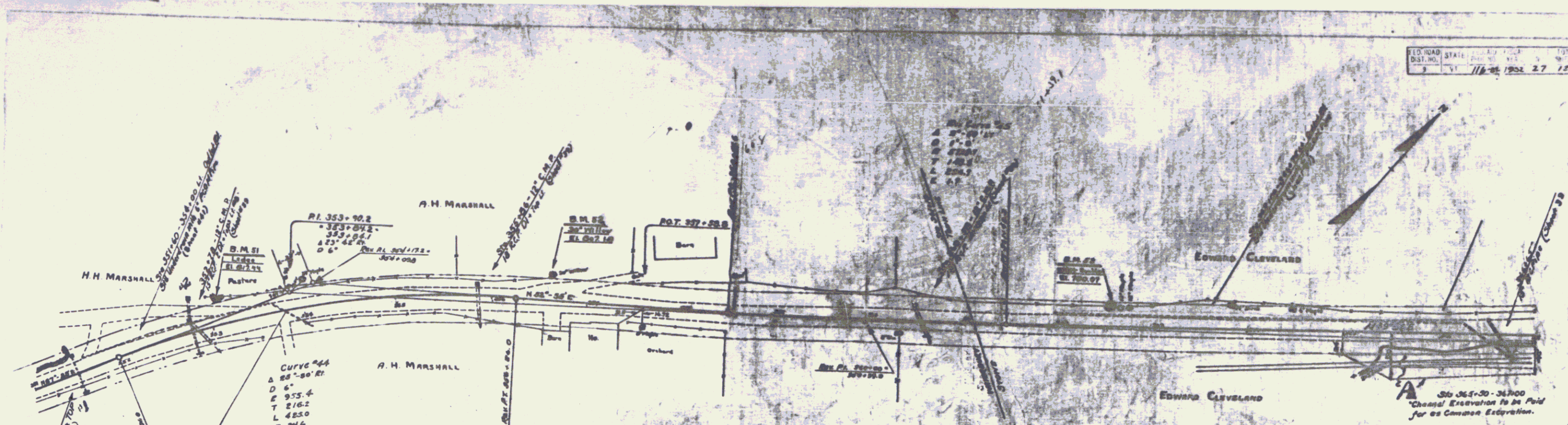
Parcel	Kind of Instrument	Date	Grantor	Grantee	Recorded	Notary
A	Q.C.D.	6-29-32	Frank A. Colson	Clarence Moody	4911	504
A	Q.C.D.	3-2-33	Anna Watts	Mrs. Anna Watts	4911	7-21-32
A	Q.C.D.	7-22-32	D.C. & W.A. Hayes	Dean C. Hayes	4911	7-23-32



Station	Elevation	Notes
170	679.85	
170	679.7	
170	679.0	
171	676.9	
171	676.5	
172	674.9	
172	674.3	
172	673.2	
172	672.6	
173	671.2	
173	670.5	
173	668.7	
173	668.5	
173	668.4	
173	668.3	
173	668.2	
173	668.1	
173	668.0	
173	667.9	
173	667.8	
173	667.7	
173	667.6	
173	667.5	
173	667.4	
173	667.3	
173	667.2	
173	667.1	
173	667.0	
173	666.9	
173	666.8	
173	666.7	
173	666.6	
173	666.5	
173	666.4	
173	666.3	
173	666.2	
173	666.1	
173	666.0	
173	665.9	
173	665.8	
173	665.7	
173	665.6	
173	665.5	
173	665.4	
173	665.3	
173	665.2	
173	665.1	
173	665.0	
173	664.9	
173	664.8	
173	664.7	
173	664.6	
173	664.5	
173	664.4	
173	664.3	
173	664.2	
173	664.1	
173	664.0	
173	663.9	
173	663.8	
173	663.7	
173	663.6	
173	663.5	
173	663.4	
173	663.3	
173	663.2	
173	663.1	
173	663.0	
173	662.9	
173	662.8	
173	662.7	
173	662.6	
173	662.5	
173	662.4	
173	662.3	
173	662.2	
173	662.1	
173	662.0	
173	661.9	
173	661.8	
173	661.7	
173	661.6	
173	661.5	
173	661.4	
173	661.3	
173	661.2	
173	661.1	
173	661.0	
173	660.9	
173	660.8	
173	660.7	
173	660.6	
173	660.5	
173	660.4	
173	660.3	
173	660.2	
173	660.1	
173	660.0	
173	659.9	
173	659.8	
173	659.7	
173	659.6	
173	659.5	
173	659.4	
173	659.3	
173	659.2	
173	659.1	
173	659.0	
173	658.9	
173	658.8	
173	658.7	
173	658.6	
173	658.5	
173	658.4	
173	658.3	
173	658.2	
173	658.1	
173	658.0	
173	657.9	
173	657.8	
173	657.7	
173	657.6	
173	657.5	
173	657.4	
173	657.3	
173	657.2	
173	657.1	
173	657.0	
173	656.9	
173	656.8	
173	656.7	
173	656.6	
173	656.5	
173	656.4	
173	656.3	
173	656.2	
173	656.1	
173	656.0	
173	655.9	
173	655.8	
173	655.7	
173	655.6	
173	655.5	
173	655.4	
173	655.3	
173	655.2	
173	655.1	
173	655.0	
173	654.9	
173	654.8	
173	654.7	
173	654.6	
173	654.5	
173	654.4	
173	654.3	
173	654.2	
173	654.1	
173	654.0	
173	653.9	
173	653.8	
173	653.7	
173	653.6	
173	653.5	
173	653.4	
173	653.3	
173	653.2	
173	653.1	
173	653.0	
173	652.9	
173	652.8	
173	652.7	
173	652.6	
173	652.5	
173	652.4	
173	652.3	
173	652.2	
173	652.1	
173	652.0	
173	651.9	
173	651.8	
173	651.7	
173	651.6	
173	651.5	
173	651.4	
173	651.3	
173	651.2	
173	651.1	
173	651.0	
173	650.9	
173	650.8	
173	650.7	
173	650.6	
173	650.5	
173	650.4	
173	650.3	
173	650.2	
173	650.1	
173	650.0	
173	649.9	
173	649.8	
173	649.7	
173	649.6	
173	649.5	
173	649.4	
173	649.3	
173	649.2	
173	649.1	
173	649.0	
173	648.9	
173	648.8	
173	648.7	
173	648.6	
173	648.5	
173	648.4	
173	648.3	
173	648.2	
173	648.1	
173	648.0	
173	647.9	
173	647.8	
173	647.7	
173	647.6	
173	647.5	
173	647.4	
173	647.3	
173	647.2	
173	647.1	
173	647.0	
173	646.9	
173	646.8	
173	646.7	
173	646.6	
173	646.5	
173	646.4	
173	646.3	
173	646.2	
173	646.1	
173	646.0	
173	645.9	
173	645.8	
173	645.7	
173	645.6	
173	645.5	
173	645.4	
173	645.3	
173	645.2	
173	645.1	
173	645.0	
173	644.9	
173	644.8	
173	644.7	
173	644.6	
173	644.5	
173	644.4	
173	644.3	
173	644.2	
173	644.1	
173	644.0	
173	643.9	
173	643.8	
173	643.7	
173	643.6	
173	643.5	
173	643.4	
173	643.3	
173	643.2	
173	643.1	
173	643.0	
173	642.9	
173	642.8	
173	642.7	
173	642.6	
173	642.5	
173	642.4	
173	642.3	
173	642.2	
173	642.1	
173	642.0	
173	641.9	
173	641.8	
173	641.7	
173	641.6	
173	641.5	
173	641.4	
173	641.3	
173	641.2	
173	641.1	
173	641.0	
173	640.9	
173	640.8	
173	640.7	
173	640.6	
173	640.5	
173	640.4	
173	640.3	
173	640.2	
173	640.1	
173	640.0	

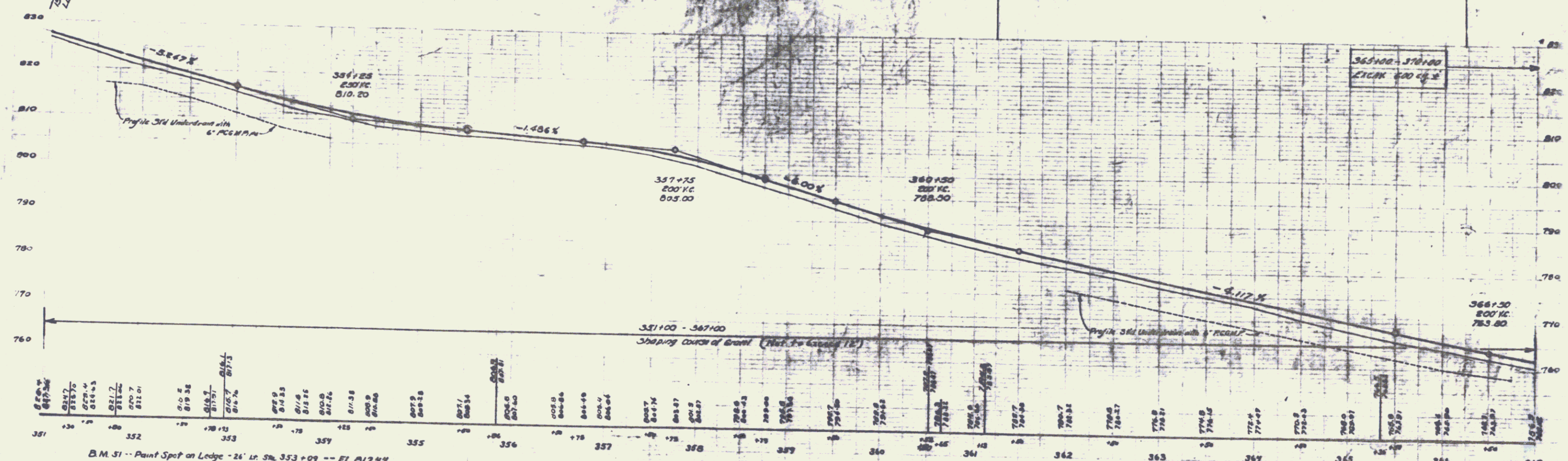
BM 24 -- U.S.G.S. B.M. - Lease - 20' Rr Sta 177+51 - El. 654.82

SERIES F 116-16-D
SHEET 13 OF 122 SHEETS
15

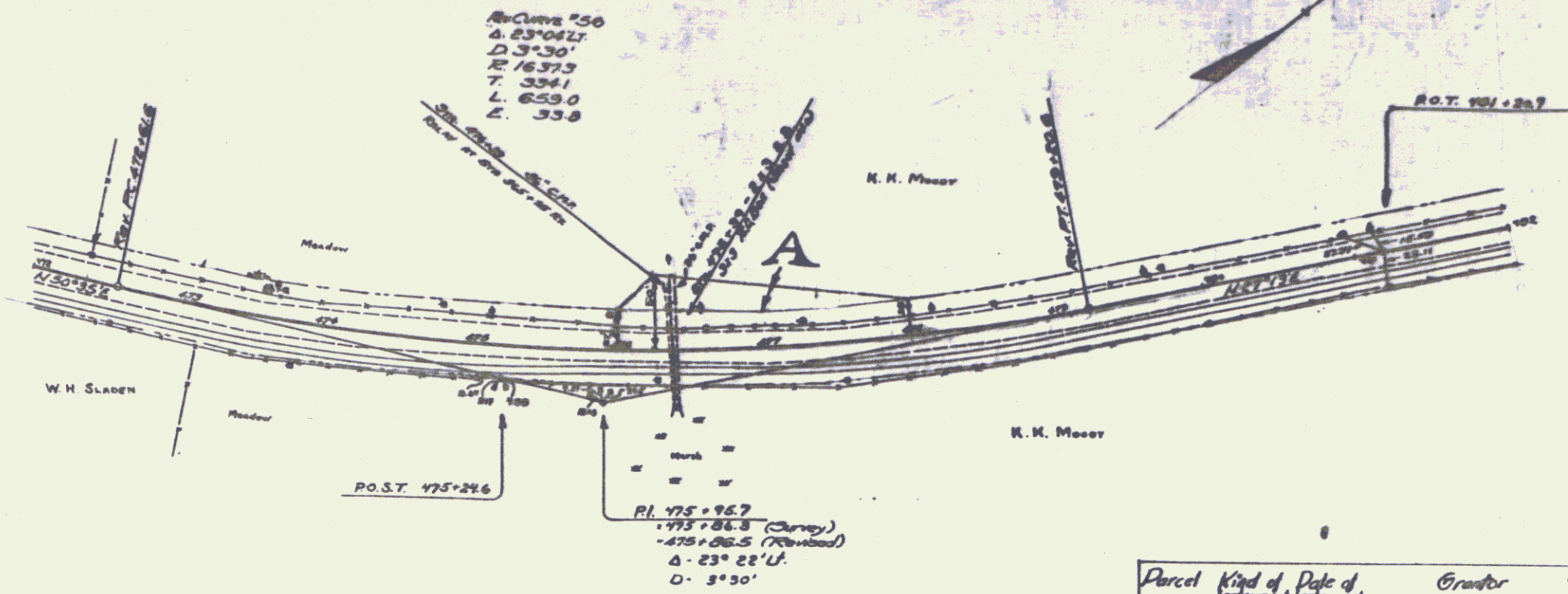


POOR ORIGINAL COPY

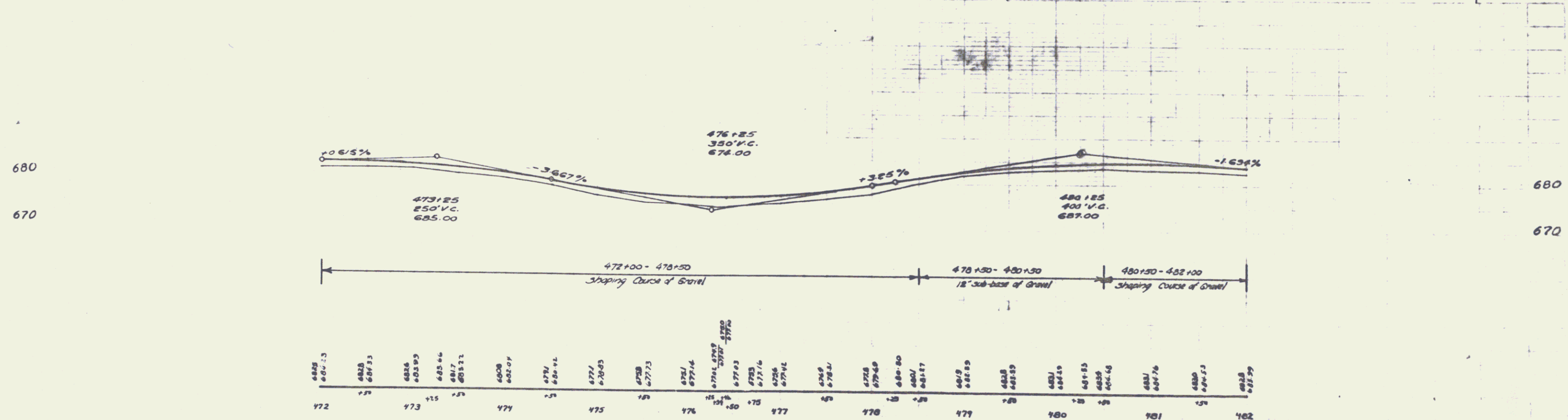
Parcel	Kind of Parcel	Grantee	Acres	Recorded	Remarks
A	Q.C.D. 82-32	E.P. Cleveland	37.00	9-9-32	Cut 3/4
Cut #2	Q.C.D. 750-32	A.H. Marshall	44.32	9-9-32	22 1/2
			32.7	9-9-32	32 1/2



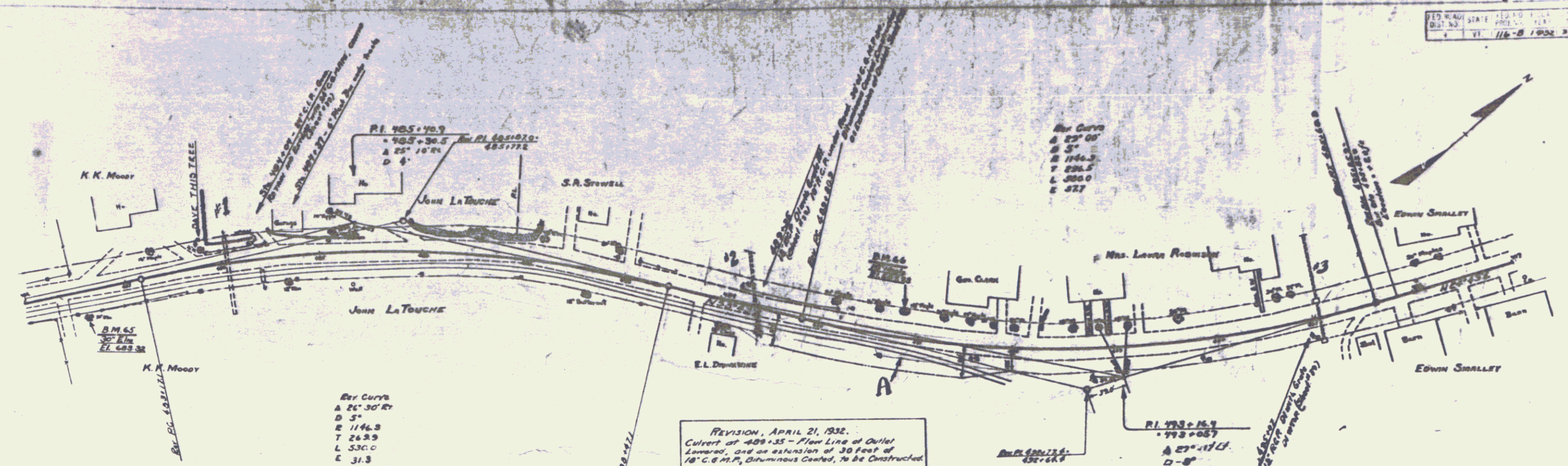
B.M. 51 -- Paint Spot on Ledge - 24' Lt. Sta. 353+09 -- EL 817.49
 B.M. 52 -- Spike in road 36" Wilcox - 27' Lt. Sta. 356+61 -- EL 807.10
 B.M. 53 -- USGS BM - Bronze tablet on Boulder - 26' Lt. Sta. 362+67 -- EL 780.07



Parcel	Kind of	Date of	Grantee	Grantee	Recorded	Remarks
	Instrument	Instrument			Stone	
Lot A	Q.C.D.	8-8-32	K.K. & Grace Moody	St. 11. 32	07	8-9-32 Sta. 474+100

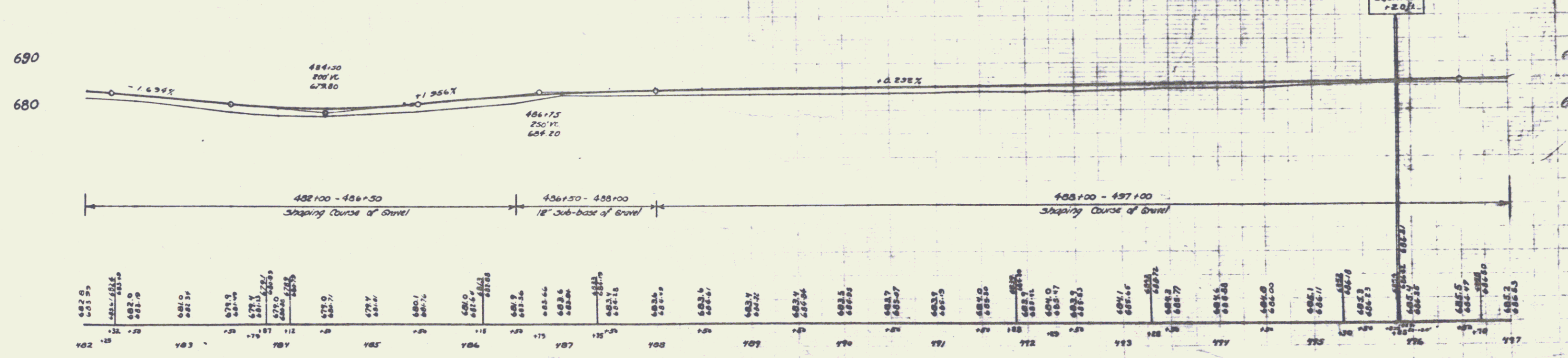


4825	682.13	4820	681.83	4815	681.53	4810	681.23	4805	680.93	4800	680.63	4795	680.33	4790	680.03	4785	679.73	4780	679.43	4775	679.13	4770	678.83	4765	678.53	4760	678.23	4755	677.93	4750	677.63	4745	677.33	4740	677.03	4735	676.73	4730	676.43	4725	676.13	4720	675.83	4715	675.53	4710	675.23	4705	674.93	4700	674.63	4695	674.33	4690	674.03	4685	673.73	4680	673.43	4675	673.13	4670	672.83	4665	672.53	4660	672.23	4655	671.93	4650	671.63	4645	671.33	4640	671.03	4635	670.73	4630	670.43	4625	670.13	4620	669.83	4615	669.53	4610	669.23	4605	668.93	4600	668.63	4595	668.33	4590	668.03	4585	667.73	4580	667.43	4575	667.13	4570	666.83	4565	666.53	4560	666.23	4555	665.93	4550	665.63	4545	665.33	4540	665.03	4535	664.73	4530	664.43	4525	664.13	4520	663.83	4515	663.53	4510	663.23	4505	662.93	4500	662.63	4495	662.33	4490	662.03	4485	661.73	4480	661.43	4475	661.13	4470	660.83	4465	660.53	4460	660.23	4455	659.93	4450	659.63	4445	659.33	4440	659.03	4435	658.73	4430	658.43	4425	658.13	4420	657.83	4415	657.53	4410	657.23	4405	656.93	4400	656.63	4395	656.33	4390	656.03	4385	655.73	4380	655.43	4375	655.13	4370	654.83	4365	654.53	4360	654.23	4355	653.93	4350	653.63	4345	653.33	4340	653.03	4335	652.73	4330	652.43	4325	652.13	4320	651.83	4315	651.53	4310	651.23	4305	650.93	4300	650.63	4295	650.33	4290	650.03	4285	649.73	4280	649.43	4275	649.13	4270	648.83	4265	648.53	4260	648.23	4255	647.93	4250	647.63	4245	647.33	4240	647.03	4235	646.73	4230	646.43	4225	646.13	4220	645.83	4215	645.53	4210	645.23	4205	644.93	4200	644.63	4195	644.33	4190	644.03	4185	643.73	4180	643.43	4175	643.13	4170	642.83	4165	642.53	4160	642.23	4155	641.93	4150	641.63	4145	641.33	4140	641.03	4135	640.73	4130	640.43	4125	640.13	4120	639.83	4115	639.53	4110	639.23	4105	638.93	4100	638.63	4095	638.33	4090	638.03	4085	637.73	4080	637.43	4075	637.13	4070	636.83	4065	636.53	4060	636.23	4055	635.93	4050	635.63	4045	635.33	4040	635.03	4035	634.73	4030	634.43	4025	634.13	4020	633.83	4015	633.53	4010	633.23	4005	632.93	4000	632.63	3995	632.33	3990	632.03	3985	631.73	3980	631.43	3975	631.13	3970	630.83	3965	630.53	3960	630.23	3955	629.93	3950	629.63	3945	629.33	3940	629.03	3935	628.73	3930	628.43	3925	628.13	3920	627.83	3915	627.53	3910	627.23	3905	626.93	3900	626.63	3895	626.33	3890	626.03	3885	625.73	3880	625.43	3875	625.13	3870	624.83	3865	624.53	3860	624.23	3855	623.93	3850	623.63	3845	623.33	3840	623.03	3835	622.73	3830	622.43	3825	622.13	3820	621.83	3815	621.53	3810	621.23	3805	620.93	3800	620.63	3795	620.33	3790	620.03	3785	619.73	3780	619.43	3775	619.13	3770	618.83	3765	618.53	3760	618.23	3755	617.93	3750	617.63	3745	617.33	3740	617.03	3735	616.73	3730	616.43	3725	616.13	3720	615.83	3715	615.53	3710	615.23	3705	614.93	3700	614.63	3695	614.33	3690	614.03	3685	613.73	3680	613.43	3675	613.13	3670	612.83	3665	612.53	3660	612.23	3655	611.93	3650	611.63	3645	611.33	3640	611.03	3635	610.73	3630	610.43	3625	610.13	3620	609.83	3615	609.53	3610	609.23	3605	608.93	3600	608.63	3595	608.33	3590	608.03	3585	607.73	3580	607.43	3575	607.13	3570	606.83	3565	606.53	3560	606.23	3555	605.93	3550	605.63	3545	605.33	3540	605.03	3535	604.73	3530	604.43	3525	604.13	3520	603.83	3515	603.53	3510	603.23	3505	602.93	3500	602.63	3495	602.33	3490	602.03	3485	601.73	3480	601.43	3475	601.13	3470	600.83	3465	600.53	3460	600.23	3455	599.93	3450	599.63	3445	599.33	3440	599.03	3435	598.73	3430	598.43	3425	598.13	3420	597.83	3415	597.53	3410	597.23	3405	596.93	3400	596.63	3395	596.33	3390	596.03	3385	595.73	3380	595.43	3375	595.13	3370	594.83	3365	594.53	3360	594.23	3355	593.93	3350	593.63	3345	593.33	3340	593.03	3335	592.73	3330	592.43	3325	592.13	3320	591.83	3315	591.53	3310	591.23	3305	590.93	3300	590.63	3295	590.33	3290	590.03	3285	589.73	3280	589.43	3275	589.13	3270	588.83	3265	588.53	3260	588.23	3255	587.93	3250	587.63	3245	587.33	3240	587.03	3235	586.73	3230	586.43	3225	586.13	3220	585.83	3215	585.53	3210	585.23	3205	584.93	3200	584.63	3195	584.33	3190	584.03	3185	583.73	3180	583.43	3175	583.13	3170	582.83	3165	582.53	3160	582.23	3155	581.93	3150	581.63	3145	581.33	3140	581.03	3135	580.73	3130	580.43	3125	580.13	3120	579.83	3115	579.53	3110	579.23	3105	578.93	3100	578.63	3095	578.33	3090	578.03	3085	577.73	3080	577.43	3075	577.13	3070	576.83	3065	576.53	3060	576.23	3055	575.93	3050	575.63	3045	575.33	3040	575.03	3035	574.73	3030	574.43	3025	574.13	3020	573.83	3015	573.53	3010	573.23	3005	572.93	3000	572.63	2995	572.33	2990	572.03	2985	571.73	2980	571.43	2975	571.13	2970	570.83	2965	570.53	2960	570.23	2955	569.93	2950	569.63	2945	569.33	2940	569.03	2935	568.73	2930	568.43	2925	568.13	2920	567.83	2915	567.53	2910	567.23	2905	566.93	2900	566.63	2895	566.33	2890	566.03	2885	565.73	2880	565.43	2875	565.13	2870	564.83	2865	564.53	2860	564.23	2855	563.93	2850	563.63	2845	563.33	2840	563.03	2835	562.73	2830	562.43	2825	562.13	2820	561.83	2815	561.53	2810	561.23	2805	560.93	2800	560.63	2795	560.33	2790	560.03	2785	559.73	2780	559.43	2775	559.13	2770	558.83	2765	558.53	2760	558.23	2755	557.93	2750	557.63	2745	557.33	2740	557.03	2735	556.73	2730	556.43	2725	556.13	2720	555.83	2715	555.53	2710	555.23	2705	554.93	2700	554.63	2695	554.33	2690	554.03	2685	553.73	2680	553.43	2675	553.13	2670	552.83	2665	552.53	2660	552.23	2655	551.93	2650	551.63	2645	551.33	2640	551.03	2635	550.73	2630	550.43	2625	550.13	2620	549.83	2615	549.53	2610	549.23	2605	548.93	2600	548.63	2595	548.33	2590	548.03	2585	547.73	2580	547.43	2575	547.13	2570	546.83	2565	546.53	2560	546.23	2555	545.93	2550	545.63	2545	545.33	2540	545.03	2535	544.73	2530	544.43	2525	544.13	2520	543.83	2515	543.53	2510	543.23	2505	542.93	2500	542.63	2495	542.33	2490	542.03	2485	541.73	2480	541.43	2475	541.13	2470	540.83	2465	540.53	2460	540.23	2455	539.93	2450	539.63	2445	539.33	2440	539.03	2435	538.73	2430	538.43	2425	538.13	2420	537.83	2415	537.53	2410	537.23	2405	536.93	2400	536.63	2395	536.33	2390	536.03	2385	535.73	2380	535.43	2375	535.13	2370	534.83	2365	534.53	2360	534.23	2355	533.93	2350	533.63	2345	533.33	2340	533.03	2335	532.73	2330	532.43	2325	532.13	2320	531.83	2315	531.53	2310	531.23	2305	530.93	2300	530.63	2295	530.33	2290	530.03	2285	529.73	2280	529.43	2275	529.13	2270	528.83	2265	528.53	2260	528.23	2255	527.93	2250	527.63	2245	527.33	2240	527.03	2235	526.73	2230	526.43	2225
------	--------	------	--------	------	--------	------	--------	------	--------	------	--------	------	--------	------	--------	------	--------	------	--------	------	--------	------	--------	------	--------	------	--------	------	--------	------	--------	------	--------	------	--------	------	--------	------	--------	------	--------	------	--------	------	--------	------	--------	------	--------	------	--------	------	--------	------	--------	------	--------	------	--------	------	--------	------	--------	------	--------	------	--------	------	--------	------	--------	------	--------	------	--------	------	--------	------	--------	------	--------	------	--------	------	--------	------	--------	------	--------	------	--------	------	--------	------	--------	------	--------	------	--------	------	--------	------	--------	------	--------	------	--------	------	--------	------	--------	------	--------	------	--------	------	--------	------	--------	------	--------	------	--------	------	--------	------	--------	------	--------	------	--------	------	--------	------	--------	------	--------	------	--------	------	--------	------	--------	------	--------	------	--------	------	--------	------	--------	------	--------	------	--------	------	--------	------	--------	------	--------	------	--------	------	--------	------	--------	------	--------	------	--------	------	--------	------	--------	------	--------	------	--------	------	--------	------	--------	------	--------	------	--------	------	--------	------	--------	------	--------	------	--------	------	--------	------	--------	------	--------	------	--------	------	--------	------	--------	------	--------	------	--------	------	--------	------	--------	------	--------	------	--------	------	--------	------	--------	------	--------	------	--------	------	--------	------	--------	------	--------	------	--------	------	--------	------	--------	------	--------	------	--------	------	--------	------	--------	------	--------	------	--------	------	--------	------	--------	------	--------	------	--------	------	--------	------	--------	------	--------	------	--------	------	--------	------	--------	------	--------	------	--------	------	--------	------	--------	------	--------	------	--------	------	--------	------	--------	------	--------	------	--------	------	--------	------	--------	------	--------	------	--------	------	--------	------	--------	------	--------	------	--------	------	--------	------	--------	------	--------	------	--------	------	--------	------	--------	------	--------	------	--------	------	--------	------	--------	------	--------	------	--------	------	--------	------	--------	------	--------	------	--------	------	--------	------	--------	------	--------	------	--------	------	--------	------	--------	------	--------	------	--------	------	--------	------	--------	------	--------	------	--------	------	--------	------	--------	------	--------	------	--------	------	--------	------	--------	------	--------	------	--------	------	--------	------	--------	------	--------	------	--------	------	--------	------	--------	------	--------	------	--------	------	--------	------	--------	------	--------	------	--------	------	--------	------	--------	------	--------	------	--------	------	--------	------	--------	------	--------	------	--------	------	--------	------	--------	------	--------	------	--------	------	--------	------	--------	------	--------	------	--------	------	--------	------	--------	------	--------	------	--------	------	--------	------	--------	------	--------	------	--------	------	--------	------	--------	------	--------	------	--------	------	--------	------	--------	------	--------	------	--------	------	--------	------	--------	------	--------	------	--------	------	--------	------	--------	------	--------	------	--------	------	--------	------	--------	------	--------	------	--------	------	--------	------	--------	------	--------	------	--------	------	--------	------	--------	------	--------	------	--------	------	--------	------	--------	------	--------	------	--------	------	--------	------	--------	------	--------	------	--------	------	--------	------	--------	------	--------	------	--------	------	--------	------	--------	------	--------	------	--------	------	--------	------	--------	------	--------	------	--------	------	--------	------	--------	------	--------	------	--------	------	--------	------	--------	------	--------	------	--------	------	--------	------	--------	------	--------	------	--------	------	--------	------	--------	------	--------	------	--------	------	--------	------	--------	------	--------	------	--------	------	--------	------	--------	------	--------	------	--------	------	--------	------	--------	------	--------	------	--------	------	--------	------	--------	------	--------	------	--------	------	--------	------	--------	------	--------	------	--------	------	--------	------	--------	------	--------	------	--------	------	--------	------	--------	------	--------	------	--------	------	--------	------	--------	------	--------	------	--------	------	--------	------	--------	------	--------	------	--------	------	--------	------	--------	------	--------	------	--------	------	--------	------	--------	------	--------	------	--------	------	--------	------	--------	------	--------	------	--------	------	--------	------	--------	------	--------	------	--------	------	--------	------	--------	------	--------	------	--------	------	--------	------	--------	------	--------	------	--------	------	--------	------	--------	------	--------	------	--------	------	--------	------	--------	------	--------	------	--------	------	--------	------	--------	------	--------	------	--------	------	--------	------	--------	------	--------	------	--------	------	--------	------	--------	------	--------	------	--------	------	--------	------	--------	------	--------	------	--------	------	--------	------	--------	------	--------	------	--------	------	--------	------	--------	------	--------	------	--------	------	--------	------	--------	------	--------	------	--------	------	--------	------	--------	------	--------	------	--------	------	--------	------	--------	------	--------	------	--------	------	--------	------	--------	------	--------	------	--------	------	--------	------	--------	------	--------	------	--------	------	--------	------	--------	------	--------	------	--------	------	--------	------	--------	------	--------	------	--------	------	--------	------	--------	------	--------	------	--------	------	--------	------	--------	------	--------	------	--------	------	--------	------	--------	------	--------	------	--------	------	--------	------	--------	------	--------	------	--------	------	--------	------	--------	------	--------	------	--------	------	--------	------	--------	------	--------	------	--------	------	--------	------	--------	------	--------	------	--------	------	--------	------	--------	------	--------	------	--------	------	--------	------	--------	------	--------	------	--------	------	--------	------	--------	------	--------	------	--------	------	--------	------	--------	------	--------	------	--------	------	--------	------	--------	------	--------	------	--------	------	--------	------	--------	------	--------	------	--------	------	--------	------	--------	------	--------	------	--------	------	--------	------	--------	------	--------	------	--------	------	--------	------	--------	------	--------	------	--------	------	--------	------	--------	------	--------	------	--------	------	--------	------	--------	------	--------	------	--------	------	--------	------	--------	------	--------	------	--------	------	--------	------	--------	------	--------	------	--------	------	--------	------	--------	------	--------	------	--------	------	--------	------	--------	------	--------	------	--------	------	--------	------	--------	------	--------	------	--------	------	--------	------	--------	------	--------	------	--------	------	--------	------	--------	------	--------	------	--------	------	--------	------	--------	------	--------	------	--------	------	--------	------	--------	------	--------	------	--------	------	--------	------	--------	------

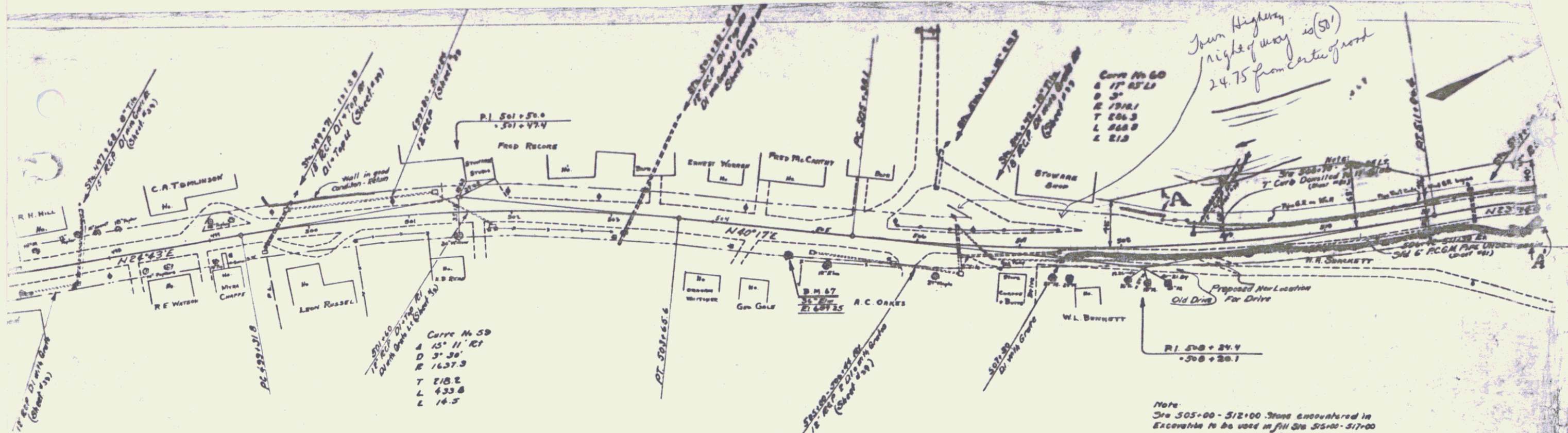


REVISION, APRIL 21, 1932.
 Culvert at 405+35 - Flow Line of Outlet Lowered, and an extension of 30 feet of 18" C.C.P., dituminous Coated, to be Constructed.

Parcel	Kind of Title	Date of Instrument	Grantor	Grantee	Recorded	Remarks
A	Q.C.D.	9-27-32	C.A. Tomlinson	5140	35-77	9-21-32
400'	Q.C.D.	9-2-32	John LaTouche	5140	35-77	9-12-32
400'	Q.C.D.	9-2-32	K.K. Grant Moody	5140	35-77	9-9-32
400'	Q.C.D.	9-2-32	S.A. Stowell	5140	35-77	9-12-32
400'	Q.C.D.	9-2-32	Mrs. L. Robinson	5140	35-77	9-12-32



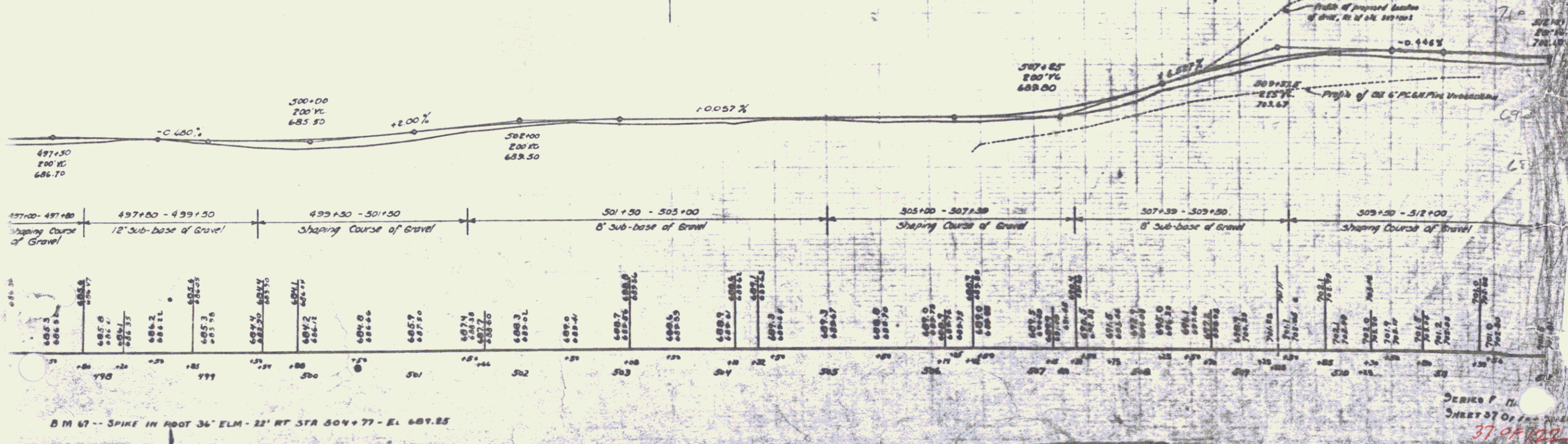
B.M. 65 -- SPIKE IN ROOT 30' ELM - 26' RT. STA. 402+55 -- EL. 603.32
 16" B.M. 66 -- 10' RT. STA. 404+85 -- EL. 604.23



Note
 Sta 505+00 - 512+00 Road encountered in
 Excavation to be used in fill Sta 550+57+00

POOR ORIGINAL COPY

Parcel	Kind of Instrument	Date of Instrument	Creator	Order	Recorded State	Remarks
A	G.C.D.	12-30-32	Stewart Inc.	1st	30 78	12-30-32
A'	G.C.D.	12-30-32	M.H. & A. Shacker	"	30 78	12-30-32



B.M. 67 - SPIKE IN FOOT 36' ELM - 22' RT STA 504+77 - EL. 689.25

DERIKO P. H.
 SURVEYOR
 37-9-1932