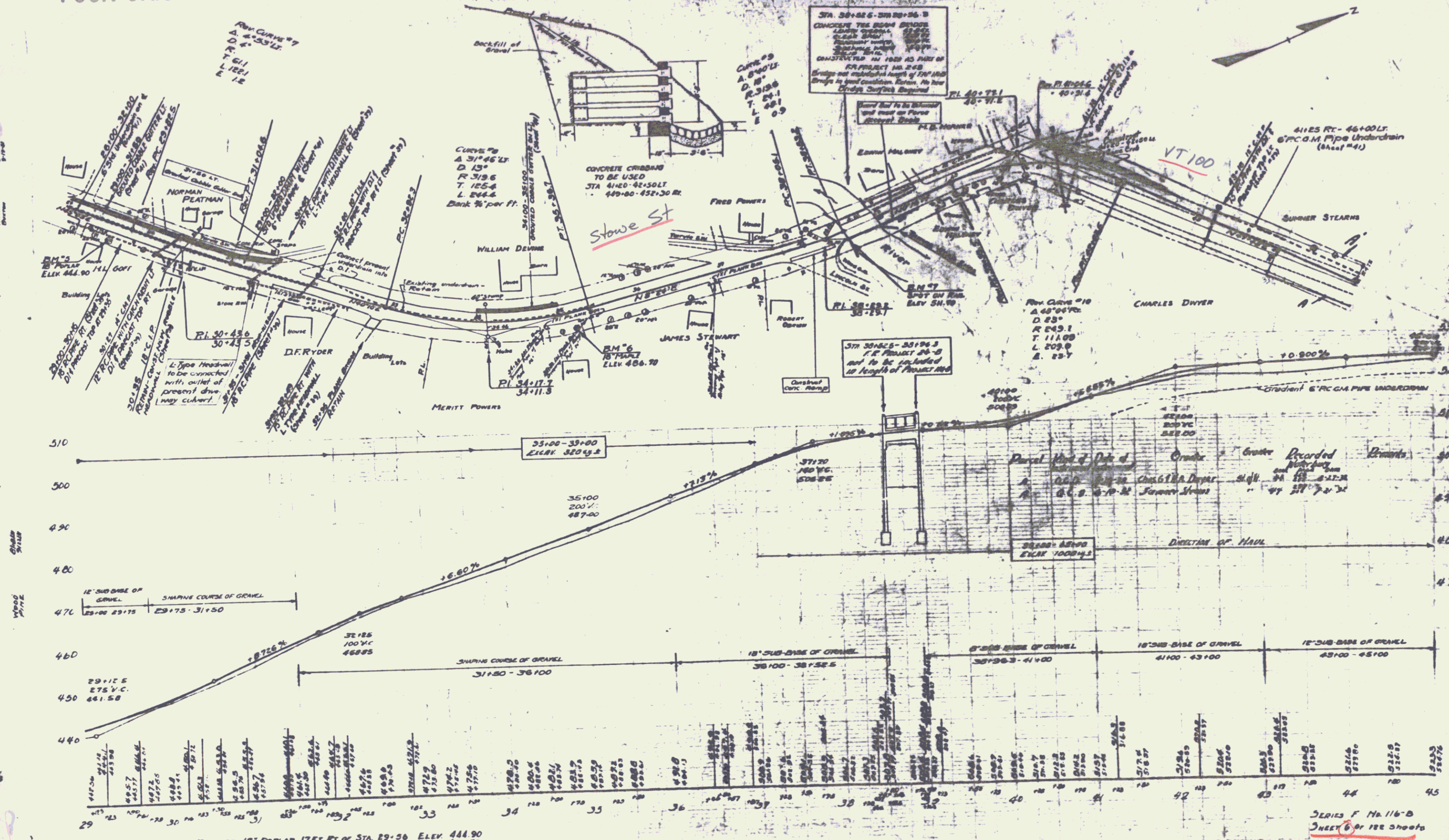


POOR ORIGINAL COPY

FED. ROAD STATE PROJ. DIST. NO. 116-B SHEET 6 OF 122 SHEETS



BM No 5 SPIKE IN ROOT OF 18" POPLAR 17 FT. RT. OF STA. 29+36 ELEV. 444.90  
 BM No 6 SPIKE IN ROOT OF 18" MAPLE 17 FT. RT. OF STA. 35+18 ELEV. 486.70  
 BM No 7 PRINT SPOT ON CONC BRIDGE RAIL 9.7 FT. RT. OF STA. 38+55 ELEV. 511.70

SERIES F No. 116-B  
SHEET 6 OF 122 SHEETS