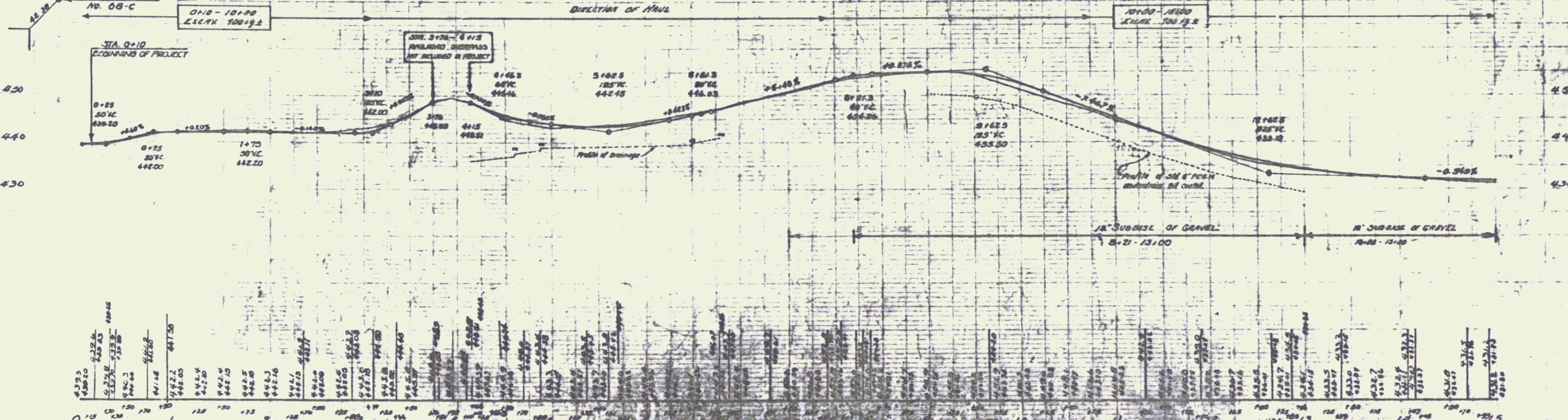
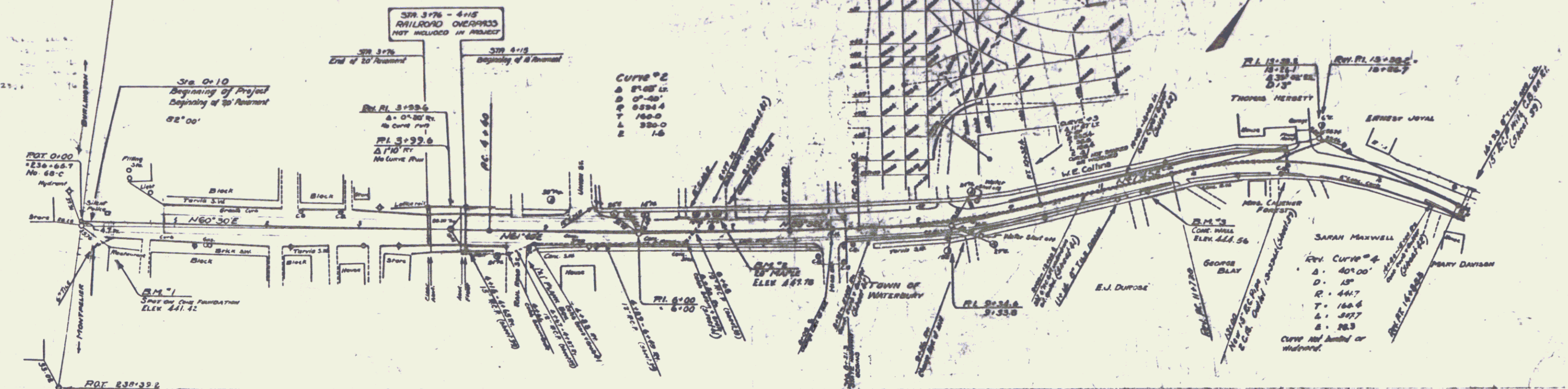


PI. 233+32.0  
 No. 68-C

NOTE:—  
 ONE COURSE CEMENT CONCRETE PAVEMENT  
 WITH EARLY STRENGTH CEMENT IS TO BE  
 USED BETWEEN STATIONS 0+10-38+62.5

STA. 3+76 - 4+15  
 RAILROAD OVERPASS  
 NOT INCLUDED IN PROJECT

CURVE #2  
 Δ 87°05'15"  
 Δ 0°-40'  
 R 6294.4  
 T 160.0  
 L 320.0  
 E 1.0



B.M. No. 1 PAINT SPOT ON CONC. FOUNDATION 18 FT. RT. OF STA. 0+29 ELEV. 441.42  
 B.M. No. 2 SPIKE IN ROOT OF 20' MAPLE 18 FT. LT. OF STA. 6+04 ELEV. 441.78  
 B.M. No. 3 PAINT SPOT ON CONC. RETAINING WALL 13 FT. RT. OF STA. 11+46 ELEV. 444.56

SERIES F No. 116-B  
 SHEET 4 OF 122