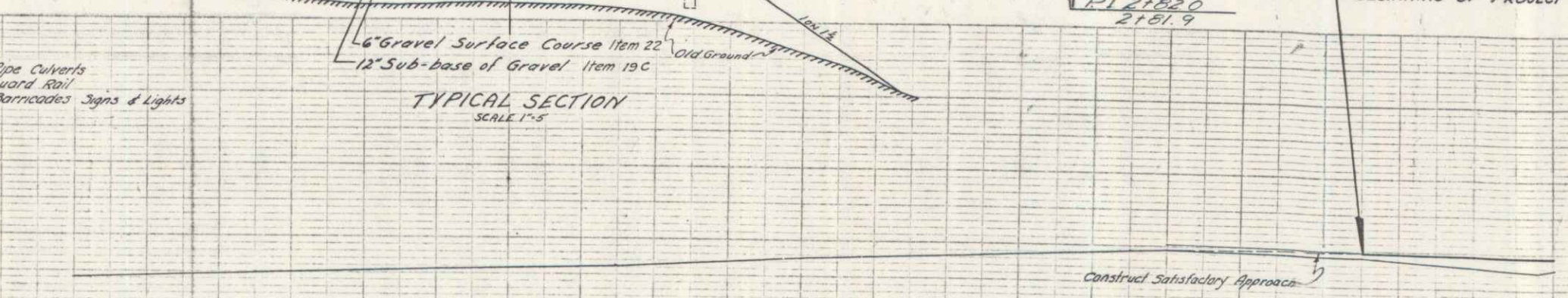
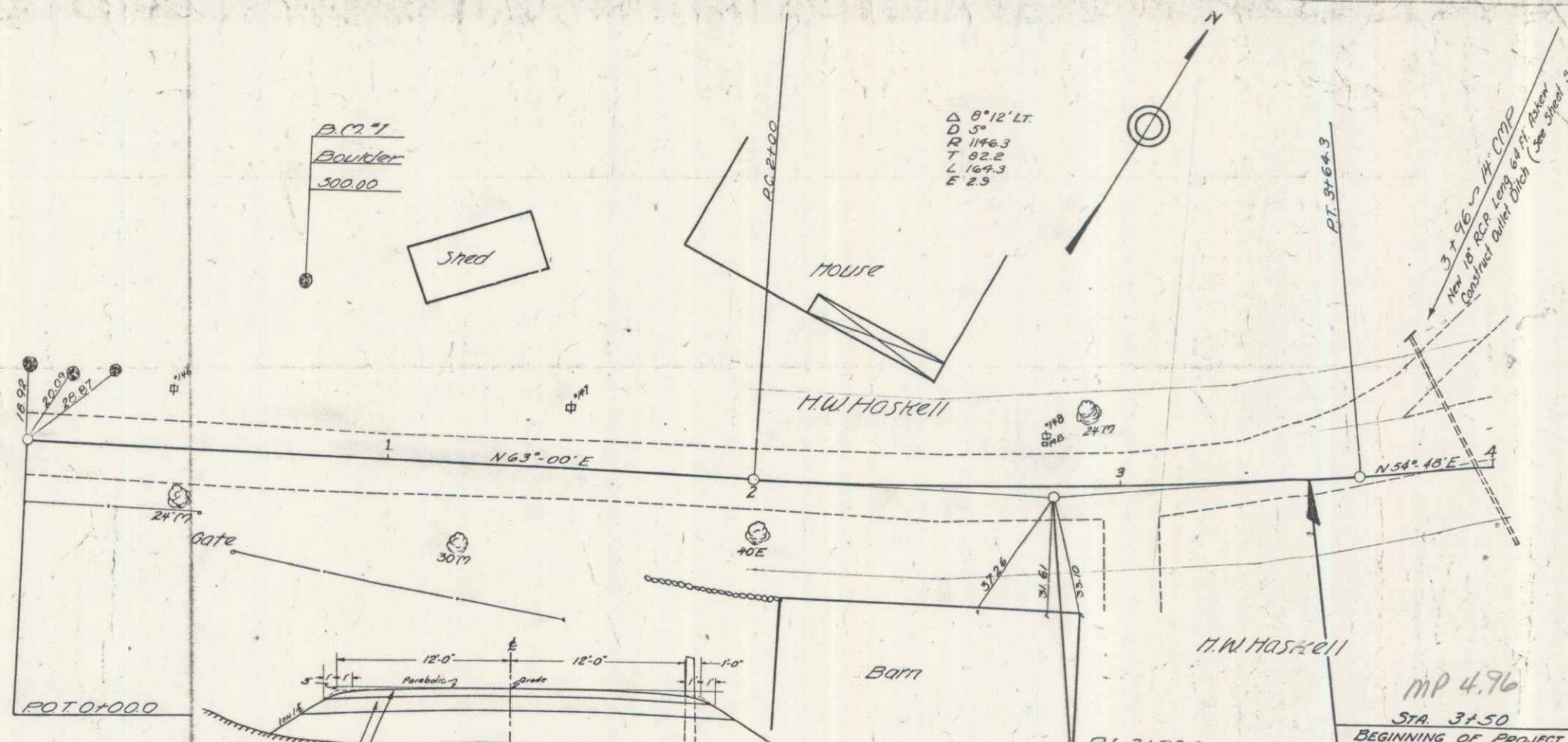


STATE OF VERMONT
 1935 1 12
 P.M.A. Doc No. 1092-F-5

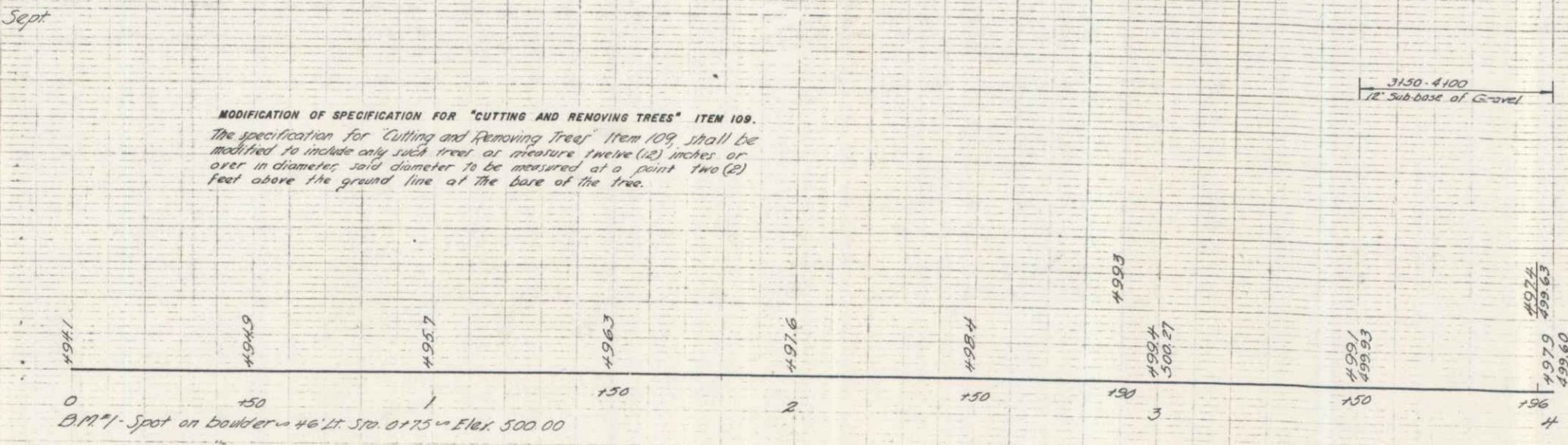
PROJECT: PWA 1042 FB
 DATE: 10/01/1938
 PIN: 00007 OKR 123
 ROUTE: VT 100
 TOWN: WILMINGTON

APPROX. SUMM. OF QUANTITIES			
Quantity	Unit	Item	Item No.
4850	cy	Common Excav Incl Borrow	10-11
30	cy	Trench Excav of Earth	12A
3	cy	" " of Rock	12B
50	cy	Channel Excavation	15
55	cy	Structure Excavation	16
1	day	Maintenance of Traffic	18
700	cy	Sub-base of Gravel	19C
300	cy	Gravel Surface Course	22
87	cy	Concrete Class A	44A
2036	lbs	Reinforcing Steel	42
2	cy	Cement Mortar Masonry	45
64	lf	12" Reinforced Concrete Pipe	49C
1	ea	Temporary Bridge	56
50	cy	Stone Fill	69
688	lf	Cable Guard Rail	80A
4	ea	Anchors for Cable Guard Rail	80B
1	ea	Guide Posts	83
4	ea	Cutting/Removing Trees	109



INDEX OF SHEETS

Sheet	Description
1-4	Plan & Profile Sheets
5	Details of 12"x9" R.C. Box
6	Standard Structure Sheet 3-28 Pipe Culverts
7	3-30 Guard Rail
8	3B-11 Barricades Signs & Lights
9-12	Cross Sections



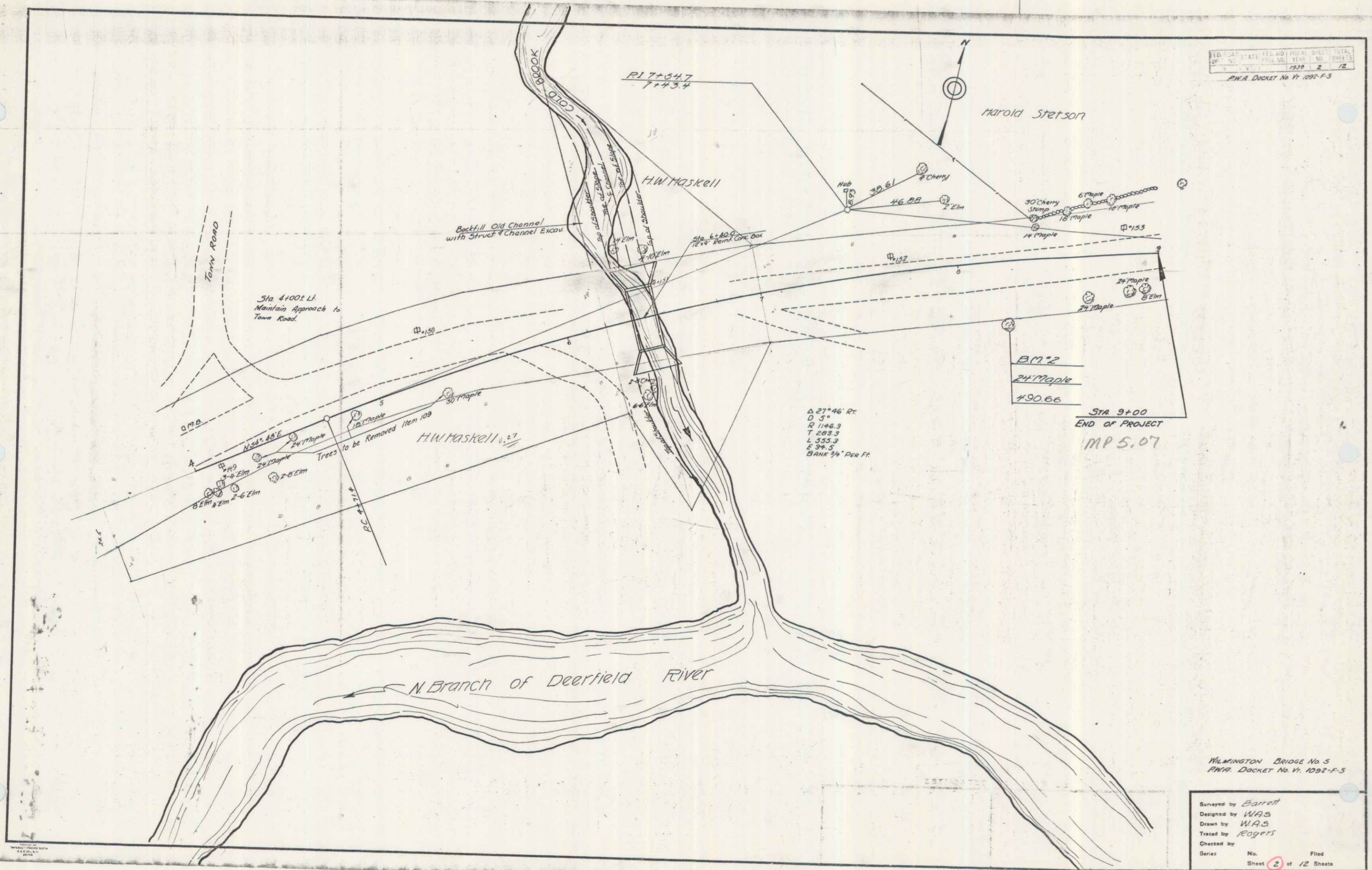
MODIFICATION OF SPECIFICATION FOR "CUTTING AND REMOVING TREES" ITEM 109.
 The specification for "Cutting and Removing Trees" Item 109 shall be modified to include only such trees as measure twelve (12) inches or over in diameter, said diameter to be measured at a point two (2) feet above the ground line at the base of the tree.

APPROVED: [Signature] 1938 520
 DISTRICT HIGHWAY COMMISSIONER
 CORRECT: G. B. [Signature] 510
 BRIDGE ENGINEER
 APPROVED: [Signature] 500
 COMMISSIONER OF HIGHWAYS

MP 4.96
 STA 3150
 BEGINNING OF PROJECT
 MP 5.07
 MP 5-05
 SEE BR 10 for some final Quant. Sheets.
 RIGHT-OF-WAY DIVISION
 TOWN FILE
 PERPETUAL
 (To Be Returned To R.O.W. Division)

Wilmington Br-298-5
 Series PWA Doc No VT 1092-F-5
 Sheet 1 of 12

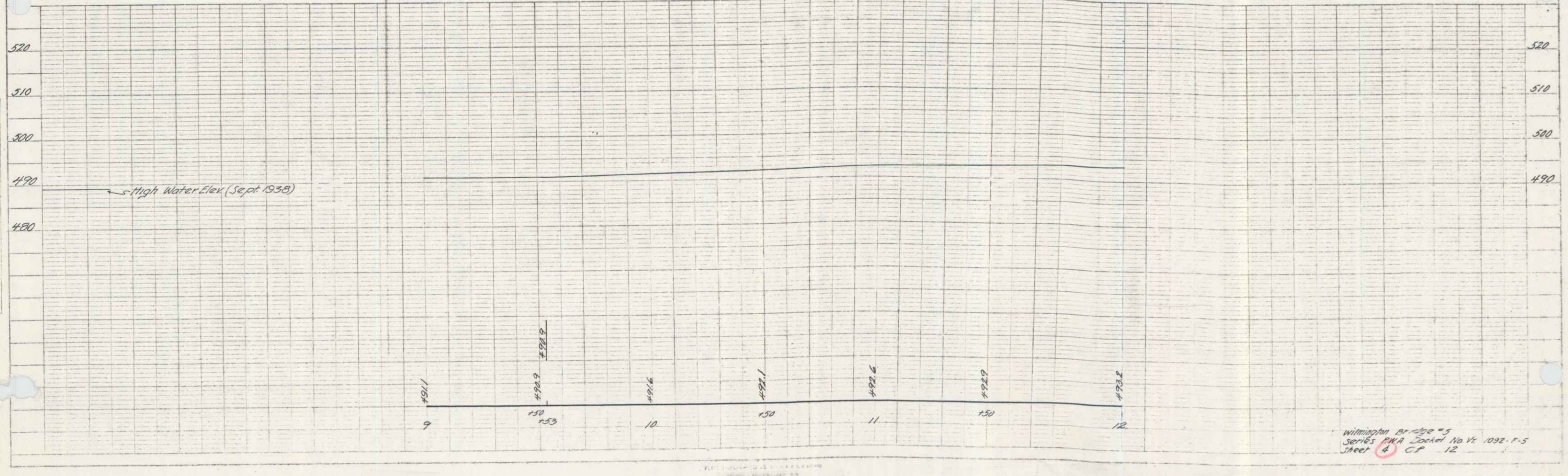
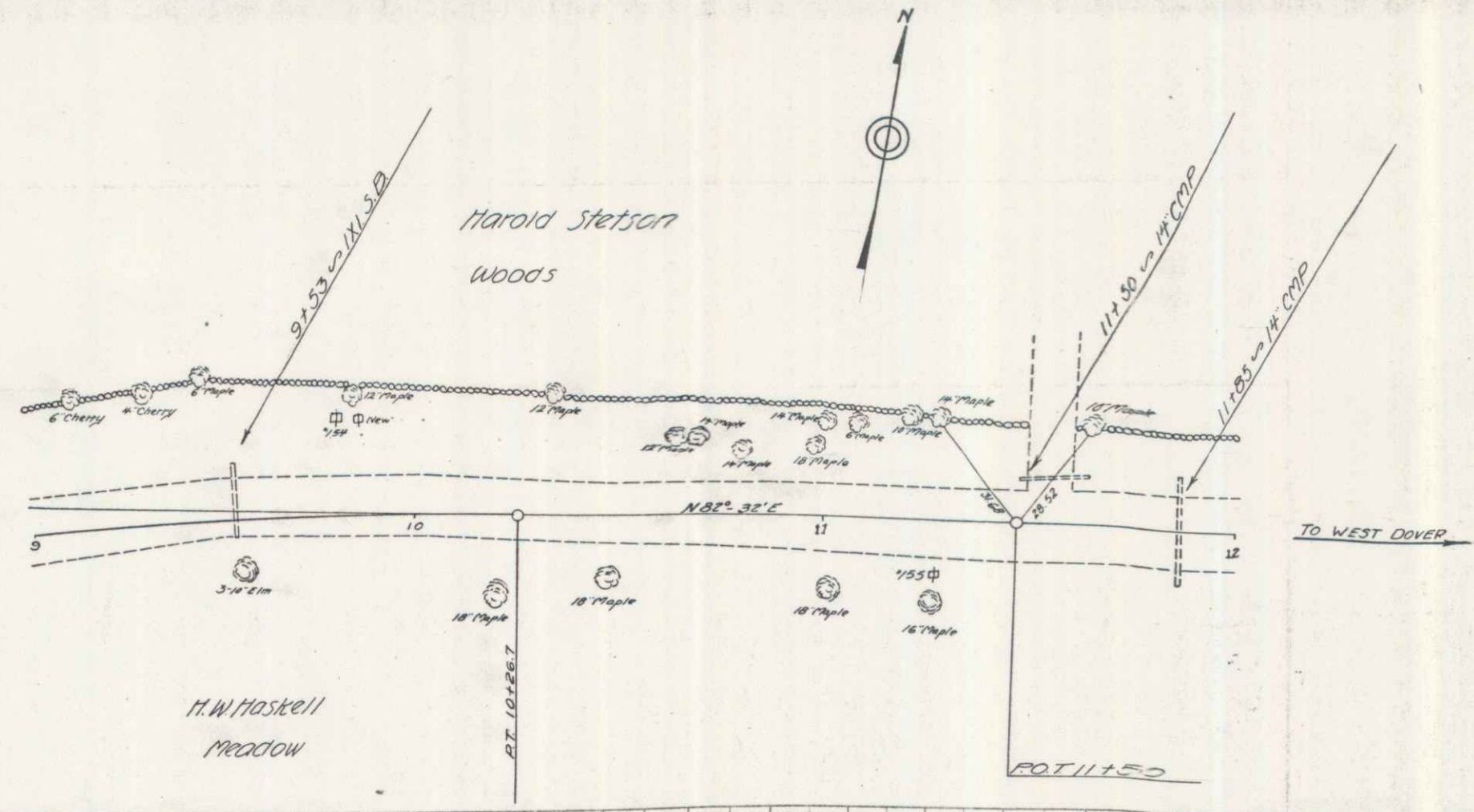
FED. ROAD DIST. NO.	STATE	FED. AID PROJ. NO.	FISCAL YEAR	TOTAL SHEETS
P.W.A. DOCKET No. V. 1092-F-5				



WILMINGTON BRIDGE No. 5
P.W.A. DOCKET No. V. 1092-F-5

Surveyed by *Barrett*
Designed by *WAS*
Drawn by *WAS*
Traced by *ROGERS*
Checked by
Series No. Filed
Sheet 2 of 12 Sheets

ED. 2007	STATE	PLAT	SHEET	TOTAL
1939	4	12		
P.M.A. Docket No. Pt. 1092-1-5				



Wilmington Br. 1092-1-5
 Series P.M.A. Docket No. Pt. 1092-1-5
 Sheet 8 of 12